

# PENNSYLVANIA 2003 FARM SHOW



**Congratulations Kori Morgan for your Grand Champion Market lamb. Purchased at the 2003 PA Farm Show by Pioneer Pole Buildings Inc.**

- 30x50x12
- 2-10'w x 10'h garage doors
- 1-3' entry door

**\$12,900**

- 40x60x12
- 1-12'w x 12'h sliding door
- 1-10'w x 10'h garage door
- 1-3' entry door

**\$15,900**

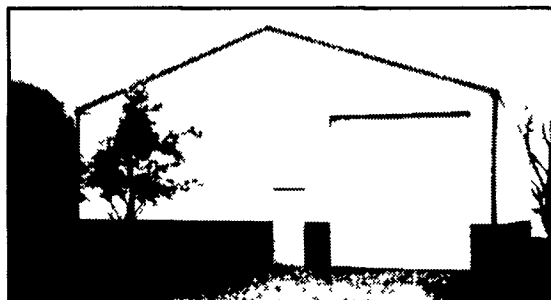
- 40x80x12
- 1-12' x 12'h sliding door
- 1-10'w x 10'h garage door
- 1-3' entry door

**\$20,900**

- 50x96x14
- 1-14'w x 14'h sliding door
- 1-12'w x 12'h garage door
- 1-3' entry door

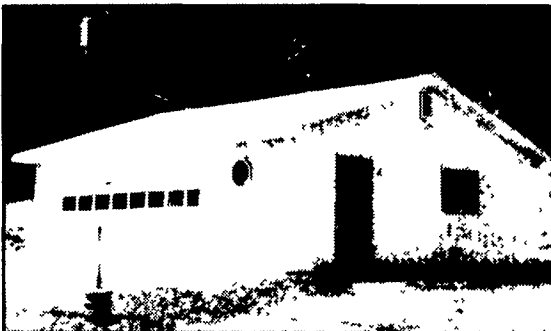
**\$27,900**

- 40# per sq. ft. snow load on trusses
- Financing Available
- Call for free literature or see us at [www.pioneerpole-buildings.com](http://www.pioneerpole-buildings.com)



**PPB, Inc.**

*Can We Build One For You!*  
**We Build All Winter!**



## Stock Buildings

- 24x24x8
- 2-9'w x 7'h garage doors
- 1-3' entry door

**\$5,500**

- 24x40x10
- 2-9'w x 8'h garage doors
- 1-3' entry door

**\$7,900**

- 30x32x10
- 2-9'w x 8'h garage doors
- 1-3' entry door

**\$7,900**

- 30x40x10
- 2-9'w x 8'h garage doors
- 1-3' entry door

**\$8,900**

- 30x64x10
- 2-10'w x 10' sliding doors
- 1-3' entry door

**\$12,900**

Prices included tax, delivery materials, and labor for construction.

**Pioneer Pole Buildings, Inc.**

716 South Rt. 183, Schuylkill Haven, PA 17972

Toll Free 1-888-448-2505 Fax 1-888-448-2515

[www.pioneerpolebuildings.com](http://www.pioneerpolebuildings.com)



- 30 year warranty Everlast painted steel (your choice of color on roof, sides, trim).
- Steel is G 100 painted and heat roll formed by Everlast Inc., the best known roofing made.