

1A CONSTRUCTION EQUIPMENT

(2) 1996 Skat Trak skid loaders, 1-owner, all maintenance records, 1300CX \$6,900, 1700CX \$7900. Both have attachment hk.ups 717-859-4554

1965 Dump Truck Ford F800, Heavy Spec **\$1000.**
w/spare parts
Sheeps foot roller/single drum, G cond **\$300.**
Case 30" backhoe bucket, Ex cond **\$450.**
Cat side dump bucket 944-950 G cond w/new bolt on edge **\$1000.**
908-735-5248
after 7 PM.

BUYING & SELLING USED CONSTRUCTION EQUIPMENT, NEW & USED PARTS & ATTACHMENTS CALL

H.E.L.P., INC.
(717) 469-0039
FAX (717) 469-7679

Specializing In Caterpillar Parts also available for Case, Fiat, IHC, Komatsu, Deere, Etc.

ALL PARTS AT DISCOUNT PRICES!
****PARTS LOCATING SERVICES****

Call Us For Your Parts & Service Manual Needs

HEAVY EQUIPMENT LOADER PARTS, INC.

10070 Allentown Blvd., Grantville, PA 17028

Winter Specials, Stop in and Choose One Today See Binkley & Hurst Bros. For Quality Machines and Good Financing Plans

Case 580 K Cab 4 Wheel Drive Bucket Extenshoe Extra Reach

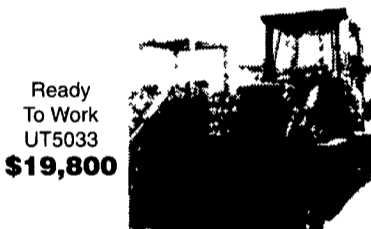


with Wobble Stick 2 Lever Controls, Large 30" Trenching Bucket (UT4979)

Cat 951 C Crawler Loader

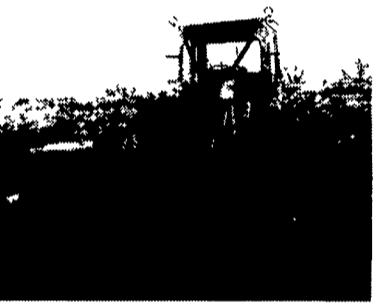


Cat 955 L Crawler Loader with Cab



Ready To Work UT5033 **\$19,800**

Cat 966 B Articulated Wheel Loader with Cab & Heater



4 Sp Power Shift, Rated 150 HP, 17 Ton Weight Class, Service Ready to Work UT5008 **\$17,800**

Gehl 47 HP Diesel



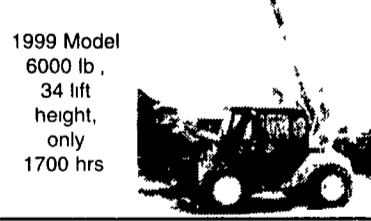
Model 4625 5X Kubota Power, We sold new 12-97, 398 original hrs, with aux hyd, 65" excavation bucket, 42" pallet fork, self leveling loader, UT5042 **Ready To Work! \$12,250**

Good Condition John Deere 655 Crawler Loader



with cab & heater, 18 ton weight class, J D turbo charged 110 hp diesel, hydrostatic drive, nice & solid, good u c, good loader, pins & solid bucket, new clutch seals, oil cooler & radiator replaced UT4994 **Fully Serviced Ready To Work A Good Strong Machine \$26,800 OBO**

JCB 506C



1999 Model 6000 lb, 34 lift height, only 1700 hrs

Lull 4 Wheel Extensboom Forklift



8000 lb. lift with outriggers, 34 foot lift height, rotating pallet carriage UT5046 **\$24,800**

Cat D4 H 6 Way Dozer



Very good condition, engine rebuild approx 1200 hrs ago, good u c, 11 ton weight class, rated 95 hp

Ask About Financing Tailored to Your Needs!

BINKLEY & HURST BROS. INC.

133 Rothsville Station Rd P O Box 0395, Litzitz, PA 17543-0395 (717) 626-4705 1-800-414-4705 Located 1/2 Mile North of Rothsville Fax 717-626-0996

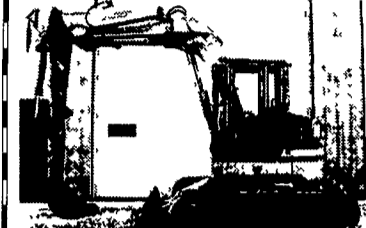
Visit our Web Site at <http://www.caseih.com>
Case IH and Case credit are registered trademarks of Case Corporation



96 Cat 307, Cab, 670 Hrs, AC, Steel Tracks **\$23,000**



97 Komatsu PC70FR, Cab, 1560 Hrs Steel Tracks, Bolt-on rubber Pads, Clean Machine **\$32,500**



92 Komatsu PC75UU, Cab, 4200 Hrs, Rubber Tracks w/Blade **\$15,500**



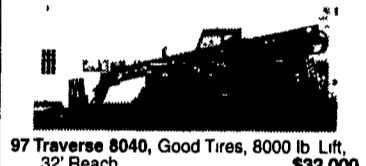
89 CAT 120G, 12' Moldboard, Scarifier, Good Tires, Nice Condition **Call**



99 Kubota B21, Canopy, 1000 Hrs, 4x4, Loader, Backhoe **\$15,900**



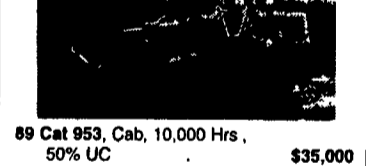
93 Komatsu D37E, 2800 Hrs, 50% UC **\$22,500**



97 Traverse 8040, Good Tires, 8000 lb Lift, 32' Reach **\$32,000**

Available 99 Tramac 1000 lb Hammer **\$4,500**

Ford 655A Backhoe, OROPS, 2WD **\$8,900**



89 Cat 953, Cab, 10,000 Hrs, 50% UC **\$35,000**

94 Cat 953B, Cab, New UC, 8200 Hrs **\$65,000**



96 Cat 315L, 6800 Hrs, Very Clean **\$46,000**



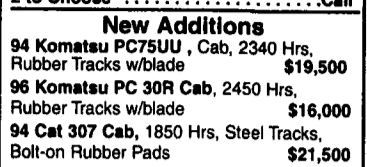
2000 Hitachi EX200-5, 2900 Hrs **\$69,000**



94 Cat D3C Series III, Cab, 50% UC **\$25,000**



86 & 88 Terex 2366, 6x6, Good Tires 2 to Choose **Call**



94 Komatsu PC75UU, Cab, 2340 Hrs, Rubber Tracks w/blade **\$19,500**

96 Komatsu PC 30R Cab, 2450 Hrs, Rubber Tracks w/blade **\$16,000**

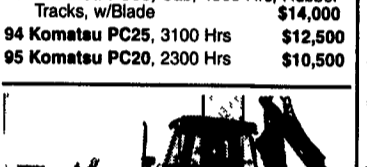
94 Cat 307 Cab, 1850 Hrs, Steel Tracks, Bolt-on Rubber Pads **\$21,500**

89 Cat E70B Cab, 4180 Hrs, Steel Tracks **\$14,000**

86 Terex 2366, 6x6, Good Tires **Call**



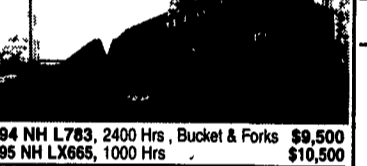
95 Komatsu D57S, 3800 Hrs, 60% UC **\$24,000**



95 Komatsu PC30, Cab, 4500 Hrs, Rubber Tracks, w/Blade **\$14,000**

94 Komatsu PC25, 3100 Hrs **\$12,500**

95 Komatsu PC20, 2300 Hrs **\$10,500**



99 Case 580L Turbo, Cab, 2500 Hrs, 4x4, Ext Hoe, Plumbed **\$31,000**

94 NH L783, 2400 Hrs, Bucket & Forks **\$9,500**

95 NH LX665, 1000 Hrs **\$10,500**

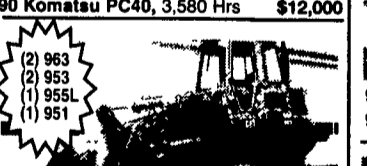
95 Chevy 3500 Service Truck, 6 5 Dsl **\$8,900**

88 Ford F350 Dually, Mechanics Body, Crane, Electric Lift Gate, New Motor, New Tires **\$6,900**

Kubota L2650 4x4 Loader, 2900 Hrs **\$8,900**

90 Hitachi EX150, 7500 Hrs, Plumbed **\$22,500**

Too Ugly to Picture
1995 Komatsu PC 200, 16,000 Hrs, Grapple **\$18,500**



96 Komatsu PC40FR, 3200 Hrs **\$14,500**

97 Komatsu PC40FR, 2950 Hrs, **\$15,000**

96 Komatsu PC40, 3200 Hrs, **\$14,500**

95 Komatsu PC40, 3660 Hrs, 6-Way Blade **\$13,500**

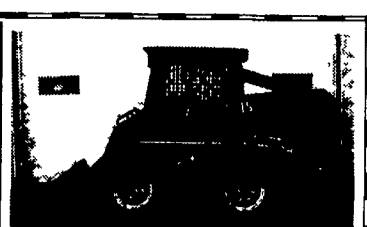
94 Komatsu PC40, 3150 Hrs, **\$12,500**

90 Komatsu PC40, 3,580 Hrs **\$12,000**

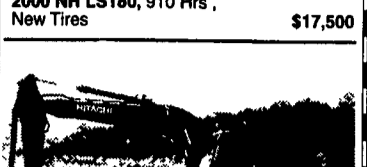
(2) 963 (2) 953 (1) 955L (1) 951 **Call**

87 Cat 963, Cab, 4-in-1 Bucket, 90% Cat UC **\$39,000**

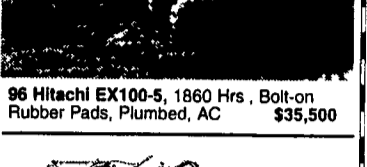
87 Cat 963, Open ROPS, New Tracks **\$32,000**



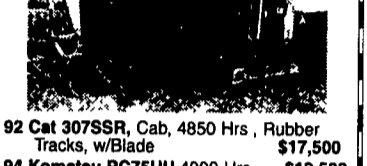
2000 NH LS180, 910 Hrs, New Tires **\$17,500**



96 Hitachi EX100-5, 1860 Hrs, Bolt-on Rubber Pads, Plumbed, AC **\$35,500**



92 Cat 307SSR, Cab, 4850 Hrs, Rubber Tracks, w/Blade **\$17,500**



94 Komatsu PC75UU, 4900 Hrs, **\$19,500**



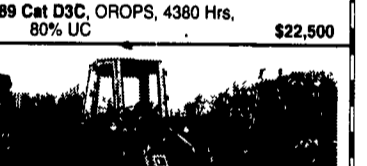
96 Ford 575D, Cab, 4300 Hrs, 4x4, Ext Hoe **\$23,500**



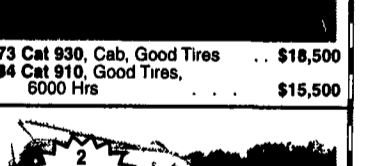
Sumitomo SH60, Steel Tracks, Cab, 2740 Hrs, Plumbed **\$13,900**



96 Kobelco SK150LC, 6900 Hrs, 8'6" wide, Good UC **\$36,000**

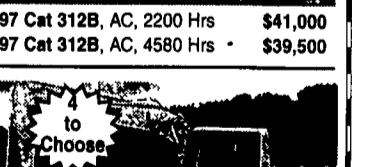


89 Cat D3C, OROPS, 4380 Hrs, 80% UC **\$22,500**



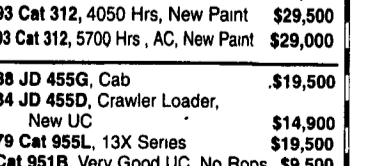
73 Cat 930, Cab, Good Tires **\$18,500**

84 Cat 910, Good Tires, 6000 Hrs **\$15,500**



97 Cat 312B, AC, 2200 Hrs **\$41,000**

97 Cat 312B, AC, 4580 Hrs **\$39,500**



96 Cat 312, AC, 5230 Hrs, New Paint **\$32,500**

93 Cat 312, 4050 Hrs, New Paint **\$29,500**

93 Cat 312, 5700 Hrs, AC, New Paint **\$29,000**

88 JD 455G, Cab **\$19,500**

84 JD 455D, Crawler Loader, New UC **\$14,900**

79 Cat 955L, 13X Series **\$19,500**

Cat 951B, Very Good UC, No Rops **\$9,500**

85 Cat 224 Mobile Excavator, Clean, 3rd Valve **\$12,500**

95 Mec 1948HT Electric Manlift **\$2,900**

Rentals Available Day, Week, or Month

Weaco Equipment

4009 Conrad Weiser Parkway, Womelsdorf, PA 19567

New Location 4 Miles East Of Myerstown on Rt. 422

610/589-5555

Toll Free 877/529-9328

Financing and Lease Purchase Available No Sunday Calls