

Salesmen:
Alvin Martin
Bill Ryland

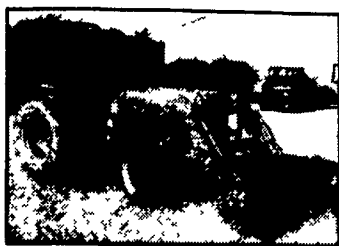


WENGENERS
OF MYERSTOWN
FARM MACHINERY
(717) 866-2135
www.wengers.com

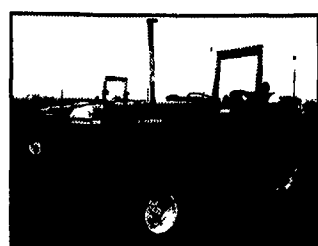
WOODS

814 S. COLLEGE ST. (ROUTE 501)

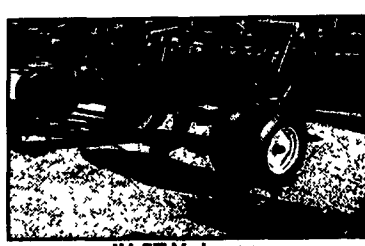
MYERSTOWN, PA 17067



Kubota L2900 4x4 w/Loader
 GST, HD Tires, 938 Hours
\$13,900



1983 John Deere 2750
 3672 hrs., 18.4x34 tires, rabbit & turtle, good original condition, 75 hp



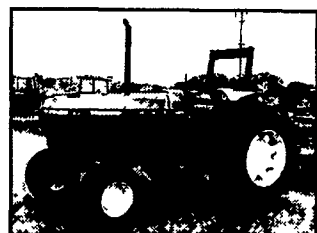
IH 5T V-ripper
 automatic spring reset, depth wheels, 22" spacing between shanks
\$3,900



New Holland S-676 spreader
 very nice, 275 bushel capacity, has the top beater **\$4,850**



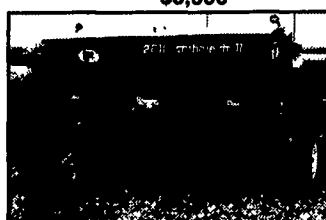
JD 245 Loader
 w/7' bucket, joystick control valve, brackets to fit 2750, 2755, etc



1988 John Deere 2755
 3301 hours, 2 sets of remote 75hp outlets, rollbar, good tires



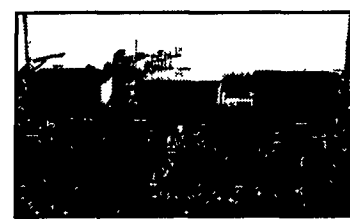
DMI 3T, 3 Pt. Tiger Subsoiler
 Has gage wheels, auto spring reset



Tye 10' no till drill
 Very Nice, w/grass seed attachment



Several new and used snowblowers in stock - 4-1/2' thru 71/2'. • Call For prices or go to www.wengers.com



JD 7200 6RN
 Unit mount Yetter no till colters, w/monitor

COMPACT TRACTORS

- Kubota L4310 4x4 w/loader
- Kubota L2900 4x4 w/loader
- Kubota L2500 4x4 w/loader
- Kubota L2250 4x4 w/loader
- Kubota B8200 4x4 w/loader
- Ford NH TC21D 4x4 w/blade
- Ford 1520 4x4 w/mower
- Ford 1210 2WD w/blade
- Terramite T5C loader backhoe
- JD 4300 4x4 w/loader & backhoe
- JD 850 4x4 w/loader
- JD 445 w/54" mower deck
- JD 322 w/46" deck & front blade

MANURE SPREADERS

- NH 676 Tandem
- NH 519 Spreader Top Beater, litter pan
- NH 514 Spreader
- Ford NH 155, very nice
- Ford NH 145 1 w/tailgate
- NI 14A gr dr Spreader
- JD R ground drive

DISC HARROWS

- Pequea 50 PTO Spreader
- Sunflower 18' rockflex
- Krause 18' rockflex
- Aamco 18' rockflex
- White 271 18' Rockflex,
- White 252 12' Disc
- Krause 14' offset disc
- Kewanee 12' Rockflex Disc
- Kewanee 21' flat fold disc
- JD MX225 7' offset (new)
- JD 9' Offset
- JD 8' & 9' Disc
- JD 6' Offset drag disc
- IH 10', 12' & 13' Disc
- MF 6' 3pt Offset Disc
- MF 9' 3pt Disc
- IH 8' FH Disk
- Case 8' Offset
- AC 9' disc (nice)

SOIL SAVERS & CHISELS

- AC 13' hyd wing fold
- Several Small 3pt Discs, 4', 5', 6' & 7'
- DMI 3 T 3pt ripper auto reset
- IH 6000 8T soil saver
- IH 7T 3pt chisel
- Dunham BT 3pt chisel
- IH 10T pull type chisel
- JD 714 7T soil saver, sharp
- Glenco 5T soil saver
- Deutz Allis 7T soil saver
- MF 7T soil saver
- Sunflower 7T soil saver
- Hesston 9T soil saver
- Landoll 9T soil saver
- Blanton 7T 3pt chisel
- Bush Hog 8T 3pt chisel

GRAIN DRILLS

- Bush Hog 12T pull chisel
- Case IH 5300 21x7 DD w/grass & press
- IH 510 13x7 DD w/grass
- JD 8200 21x10 DD soybean drill
- JD B 14x7 SD w/Grass
- Oliver 13x7 DD w/Grass & Fert.
- Tye 10' no till stubble drill, nice

TRACTORS

- JD 2755, 75 hp
- JD 2750, 75 hp
- JD 2355, 55 hp, very nice
- JD 4240, 110 hp, cab, air, quad
- 2) JD 4020, 95 hp, 1 w/cab
- JD 3020, 70 hp, diesel
- JD 3020 70 hp, gas, utility
- JD 302, 38 hp, diesel, low utility
- JD 301, 38 hp, gas, low utility, reverser
- JD 60, gas, low seat
- JD 50 w/WF, PS, 3 pt., loader
- JD 420, try, 3 pt.
- JD AR, nicely restored
- 5) JD B, poor to good, 1 is unstyled
- JD D, styled w/PTO, new tires
- JD MT
- 2) JD H, repainted
- Case IH 495 4x4 w/ldr. & reverser
- Case IH 695 w/loader & canopy
- 5) Case IH 695 w/canopy, lo-pro tires
- Case IH 265 offset w/cultivator
- IH 986, 105 hp, cab, nice, low hours
- IH 674, 60 hp, diesel, nice
- IH 330, FH, TA, good cond.
- IH 154 cub loby w/mower & 3 pt.
- Ford 5000, 55 hp, gas, nice
- Ford 8N w/loader
- Ferguson T030, nicely redone
- Farmall Cub w/your choice of attachments
- Farmall Super MTA w/power steering
- Farmall Super C w/FH
- Farmall Super A
- Farmall 100 w/cultivator & FH
- 5) Farmall 140 mowers & cultivators available

ROTARY and SICKLE MOWERS

- Woods HD 315 15' Batwing, 1000 PTO
- Woods 3180 15' Batwing
- Woods 208 8' pull Type
- Woods 1260 10 1/2' pull
- Woods 7' 3 pt. Brushbull
- Woods 5', 6' and 7' rear discharge
- Woods 59 for Cub & A
- IH 5 1/2' Pull Rotary
- JD 6' Pull Rotary
- Land Pride 10' Rotary Mower
- Rhino 10' rotary mower
- Bush Hog 8' Pull Offset Mower
- King Kutter 5' 3 pt., 6' 3pt. Rotary
- Cub Sickle Mower
- Ford 501 7' 3 pt Sickle
- JD 50 Side Mt. Sickle
- 2) JD 350 7' & 9' 3 pt. Sickle
- 2) IH 7' Fast Hitch Sickle
- NH 455 Pull Type Sickle
- NH 451 7' 3pt. Sickle
- Haban 5' 3pt. Sickle Mower
- IH 7' Semi Mount Sickle

HAYBINES

- JD 1460 Discbine, 9'9" cut
- NH 477 7' Haybine
- NH 472 7' haybine (sharp)
- JD 1207 7' Haybine
- Case IH 1190 7' Haybine, like new

MISCELLANEOUS

- Shaver HD 10 post pounder
- 2) Kawasaki 300 Auto 4x4 Prairie
- Polaris 400L 4x4
- Kawasaki 2510 mule
- 3) JD 6x4 diesel Gator
- JD 4x2 Gator
- 2) Killbros 475 grain cart
- 18.4x38 and 20.8x38 Duals
- Axle Duals to Fit JD 7400
- 52", 60" & 72" Woods 3 Pt. Rototiller
- CIH #50 12 1/2' Stalk Chopper
- JD 16A Flail Chopper
- Gehl 72 Flail Chopper
- Brillion 5'6" 3 pt. seeder
- 13' 3 pt. Perfecta Harrow
- Degelman Rock Prow
- Danuser post-hole digger & others
- Cub & Super A cultivators
- Krause 10' landsman
- Several Loaders including CIH 2250, 2350
- JD 245, JD 148, IH 2255
- Several HD 8' 3pt Blades
- Several Plows
- Several Gravity Bin Wagons
- Woods 6500 & 7500 3 pt. backhoe
- Bobcat 453 diesel skid loader
- NHLS190 Skid Loader, low hours
- Gehl 4835 SXT skid loader
- Case 1816 C skid loader

CORN PLANTERS

- AC 2R snap coupler planter
- AC 300 2R 3 pt. w/no tills
- IH 56 2R planter
- 2) JD 246 2R 3 pt. planter

CORN PLANTERS

- 6) JD 71 ground drive units
- JD 7200 6RN, dry, min-til
- IH IR 1pt FH
- 2) MF 2R 3 pt. Planter
- Ford 2R 3 pt. Planter

BALERS and RAKES

- JD 375 round baler
- MF 124 w/thrower
- Kuhn 440 4 star tedder
- NI 484 round baler
- JD 672 w/dolly
- NI 402 w/dolly
- NH 254 3 pt. rake tedder
- NH 162, 17 1/2", 4 star tedder
- Deutz Fahr 13 1/2" 4 star tedder
- NH 260 right hand hay rake
- Tandem rake hitch
- Ford NH 258 hyd drive rake
- JD 752 17' hay tedder, 4 star

CULTIPACKERS & MULCHERS

- Brillion 12' cultmulcher
- Brillion 14' cultmulcher
- Brillion 5 1/2' cultmulcher
- Hugo 14' roller/harrow combination
- Brillion 10' packer w/end transport
- Brillion 8' & 9' packer
- 4) Brillion 12' packer, 2 w/end transport
- Brillion 21' x-fold packer (like new)
- Brillion 28' x-fold crowsfoot
- Brillion 3' packer pups
- JD 12' packer
- JD 12' cultmulcher
- Dunham 10' & 12' Packer
- Dunham 10' cultmulcher
- Kewanee 10' cultmulcher

814 S. COLLEGE ST. (ROUTE 501) MYERSTOWN, PA 17067

WENGENERS OF MYERSTOWN FARM MACHINERY (717) 866-2135 www.wengers.com

WOODS EQUIPMENT IN STOCK

- 3180 15' Batwing
- HD 315 15' Batwing
- 2) 9180 15' Turf Batwing
- 1260 10'6" Rotary Mower
- 208 8'4" Rotary Mower
- 6500 and 7500 3 pt. backhoe
- 7' and 8' 3 pt. blades
- Pallet forks, bobtach
- 8' loader bucket
- 1012 loader (Ford blue)
- 1020 loader (black)
- 215 loader (Ford blue)
- RD 6000, 7200 & 8400 3 pt. estate mowers
- BB60, BB72 & BB840 3 pt. rotary mowers
- 59C for Farmall Cub
- L59 for Farmall Super A, 140
- 7' 3 pt. stone rake
- 52", 60" & 72" 3 pt. rotary tillers



ROTARY TILLERS
 Models GT40, GT52, GT60 & GT72



REARMOUNTS
 Model RD7200 Rear Discharge Finish Mower