

Public Auction Register

Closing Date Monday 5:00 P.M.
of each week's publication

Internet Sale Register will be updated
by Friday at 12 Noon

ATTENTION AUCTIONEERS

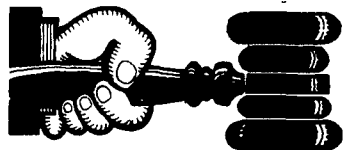
All sales register info needs complete address,
street, town, county & state.

SAT. MAY 17 - 9AM Real estate & personal property sale. Real estate at 2PM for Martin H & Vera B. Weaver. Loc. at 111 Crestview Ave. East Earl Twp. Lanc. co. PA. Turn off Rt 23 West End of Blue Ball on Crestview Ave. to sale. Auct. Randall & Ranck.

Feeder Cattle Sales Carlisle Livestock Market, Inc. 548 Alexander Spring Rd, Carlisle. Market Phone. 717-249-4511; Buyer's Phone 717-249-0396, Fax: 717-249-5507, Jim DeGaetano - Home 717-249-2359.

FRI. MAY 23 - Spring Heifer Sale, Cattle Exchange, Delhi, NY, Auct. Cattle Exchange.

TUES. MAY 20 - 7.45PM



AUCTIONEER'S DIRECTORY

Call 717-626-2191 to list your auction service.



Real Estate • Farm Equipment
• Antiques • Household Goods

It doesn't cost to use our Auction Service...It Pays.
CALL TODAY!!

The Classic Edge Auction Company

Real Estate, Appraisals,
Commercial Liquidations, Agricultural,
Antiques, Personal Property
Call today for your free consultation.

1986 Oak Lane, Manheim, PA 17545 717-665-1668
www.ClassicEdgeAuction.com
Ryan L. Groff... LIC#AU-3953L



John D. Stauffer Auctioneers

1484 Mountain Road, Manheim, PA 17545
Fulltime Courteous Professional Auction Service
Since 1976
Real Estate • Farm Equipment • Antiques
Personal Property • Livestock
Phone 717-665-5099 AU-1509-L



Bringing More!

• Personal Property • Real Estate
• Agricultural • Commercial

CURVIN M. HORNING - AUCTIONEER

Phone No.
717-351-0377

150 N Shirk Road
New Holland, PA 17557
License No 3956-L



KLING, KREIDER & GOOD

AUCTIONEERS

COMPLETE PROFESSIONAL AUCTION SERVICE
REAL ESTATE - FARMS & RESIDENTIAL
LIQUIDATIONS - ANTIQUES -
FARM MACHINERY - LIVESTOCK

RANDAL V. KLING ROY E. GOOD, JR.
AUCTIONEER-REALTOR AUCTIONEER
717-733-1006 (717) 445-4309
AU #499 AU #2116
www.klinekreidergood.com



Bringing More!

• Personal Property • Real Estate
• Agricultural • Commercial

CURVIN M. HORNING - AUCTIONEER

Phone No.
717-351-0377

150 N Shirk Road
New Holland, PA 17557
License No 3956-L

PUBLIC AUCTION

Thurs., Feb. 13, 2003

at 11:00 AM

Dairy Cattle, Tools, Machinery

Located in Northern Bedford Co. south of Martinsburg on Rt. 866 at the Beach's Auction Barn, 437 Curryville Road, Martinsburg, PA.

Tools beginning at 11 am: Truckload of new tools including forks, shovels, hand tools, power tools, misc.

Machinery: TW 20 Ford tractor. w/cab, dual hyd 20.8x38 tires, wheel wts. 5400 hrs; 753 Bobcat, 1500 hrs; 3322 Sidekick manure spreader, 2 yrs. old; New Holland 849 round baler w/auto. tie; Hesston 1150 Haybine, farm truck w/Van Dell mixer; Brillion 4 row cultivators; Rissler stationary mixer 300 cu. ft. 5 yrs. old

Cattle at approx. 12 noon: Approx. 50 young dairy cows & heifers, most just fresh or springing. Includes: 10 fresh Reg. Heifers from Andrew & Jennifer Heltzel, DHIA records, John's free. 20 from Larry & Mike Beach, 1st & 2nd calf Heifers, just fresh or heavy springers, some registered, some grades including a Romandale Dividend Performer heifer milking 75 lbs & a nice Pitino sired Jersey heifer due sale time. Remaining animals are consigned by local farmers. Nice group of young cattle showing a lot of potential. No cull cows.

Still accepting a few more consignments.

Terms: Cash or Good PA check. Bank letter of guaranteed funds required for all out of area checks.

Not responsible for Accidents.
Sale Day announcements take precedence
over printed material.

For additional information call Larry or
Michael Beach at 814-766-3551 or
814-793-2296

Auctioneer:
ART KLING
PA Lic. #00500

Pedigrees:
John Burket

PUBLIC AUCTION

Horses, Heifers, Farm Machinery,
& Milking Equipment

TUES., FEB. 11, 2003

9:30 A.M.

Located at 275 Old Leacock Rd., Gordonville, Lancaster Co., PA. From Rt. 30 in Paradise turn north on Old Leacock Rd., go 1 mile to sale on right. From Rt. 340, west of Intercourse turn south on Old Leacock Rd., go approx. 2 miles to farm on left. Watch for sale signs.

HORSES AND MULES - 1 pair 9 yr. old gelding work horses, one 7 yr. old gelding work horse; 1 pair smooth mouth gelding work horses; one smooth mouth mare work horse; 2 gray smooth mouth Molly mules; horses have lots of snap and work well on farm machinery.

COWS AND HEIFERS - 2 Dutch Belt milk cows, 1 due Feb 5; approx. 12 calves and open heifers; approx. 17 bed heifers; some service sires are Winchester, Forbidden, Magnum; all heifers from A.I. sires.

MILKING EQUIPMENT - 3 Westfalia milking units w/55 lb buckets; 65 lb. & 75 milking pails; milker washer unit; twin wash tubs; 3 cylinder Lister diesel engine rebuilt 2 yrs. ago.

FARM MACHINERY - Farmall 560 gas tractor on steel overhauled in 2001; NI 325 2-row corn picker narrow rows; #455 NH 7 ft. sickle bar mower w/4 cylinder Wisconsin engine; NH hay crimper w/Smucker rolls; NH 273 baler just rebuilt; E.L.S. 900 gal. liquid manure spreader with single axle; Wisconsin 2 cylinder engine; E.L.S. manure pump w/pipe; Kuhn 8' hay rake w/Robin 4.5 HP engine; Pequea ground driven manure spreader w/hydraulic endgate; Fisher 200 gal. sprayer like new w/24 ft. booms and 6.5 HP Honda engine 30" clearance; McCormick #9 silage cutter; 2 grain bin wagons, 2 forecarts one w/auto turn; White Horse 2 bottom plow; 4 section spring tooth harrow; 10' cultipacker; McCormick Deering 8' double roll cultipacker; JD 6' disc, antique Indiana 1 bottom plow, NH 24' elevator, 2 flat bed wagons, Zimmerman 3' barn fan w/electric motor; 8 complete sets of harness; 3 sets checklines; jockey sticks; collars, harness & harness parts; 6 horse tandem hitch; 2, 3, 4, 5, 6, 8 horse hitch; feed carts; silage carts; Pell battery fencer; small assortment of equipment parts, baler twine and other misc. small items. NOTE: Not many small items, come early.

Sale By: David B. Jr. & Esther Stoltzfus

Auctioneers:

LEON D. KURTZ AU-000522-L (610) 593-5387

J. OMAR STOLTZFUS AU-001912-L

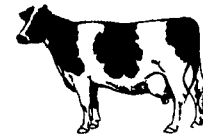
AMOS STOLTZFUS AA-002771-L

ORDER OF SALE - Small items on wagon; tack & horse hitches, milking & farm equipment followed by horses & heifers

Lunch Available

Dairy and Livestock Sales

NEW HOLLAND SALES STABLES, INC.



New Holland, Pa.
Located 12 Miles East of Lancaster, just off Rt. 23

DAIRY SALE - WEDNESDAY, FEB. 5, 2003

10:00 AM BRED HEIFERS, SHORTBREDS &
OPEN HEIFERS

11:45 AM BULLS

12:00 NOON FRESH COWS & SPRINGERS
Weekly Consignors

• Merle Breneman • Leroy Smucker
• Marvin Eshleman • Dale Hostetter

Top Herd Sells from Canada --- Registered with a-lot of type and production, 43 Cow Herd --- If you're starting to dairy or wanting to continue, this herd will fit the best program ---

70 Cows from two herds, selected off the top end of herds --- many recently fresh, many young with good udders --- mostly AI sired and bred AI --- you'll like'm

Herd Sells From Upstate --- 80 Head --- 60 cows and 20 some heifers --- low SCC --- and cows that will milk ---

Top Pedigrees on Several Bulls - Selling

NOTE TO CONSIGNORS!

Please send all information along with your cattle Tues.
Fresh Date, Breeding Dates, Milk Weights, with your trucker.

Sale Managed By
New Holland Sales Stables, Inc.
Barn 717-351-1341 Fax 355-0706
David Kolb, Mgr. 61L

PUBLIC AUCTION

Mules, Heifers, Farm Machinery
Milking Equipment

Thursday, February 13, 2003 • 9:00 AM

Located at 27 William Run Road, Christiana, Lancaster Co., PA. From Gap take 741, turn left on Mine Rd., turn left on Gap Rd., turn left on William Run Rd. From Christiana, take Sadsbury Ave. to Bridge St., turn right on Broad St., go to William Run Rd. Watch for sale signs.

6 SMOOTH MOUTH SORREL MULES, 1 8 YR. OLD SORREL MULE, (2 Jacks & 5 Mollys), broken to work well on farm machinery, one pair 6 & 8 yr. old Red Sorrel Mules, 17 hands field ready.

Approx. 20-25 Holstein heifers from AI bulls. Some due in 1-3 months. Full sets of harness, single & double trees, 4, 5, 6, 7, horse hitch, tandem hitch ropes & pulleys, bridles, collars, links, jockey sticks, 50-4x4 round bales of balage, 40 tons of 1st, 2nd, 3rd cutting alfalfa hay, 200 tons corn silage, 10 tons corn fodder.

FARM MACHINERY - 3309 Case IH discbine w/IH 986 diesel tractor rubber belt on steel 1500 hrs, 18.4x38 tires on rims, Lombardini 3 cylinder diesel engine, 325 NI 2-row cornpicker w/super sheller narrow row, corn picker side chute, NH 311 baler w/clean sweep pick up, 3 cyl. Lombardini diesel engine w/clutch used 1 yr. since overhauled, Farm Land round bale wrapper w/9 HP Honda engine & hydraulics, 2-row Summit Hill flail chopper, Pequea gyro tedder w/13 HP Honda engine, Kuhn hay rake w/Kawasaki engine, 1 horse McCormick corn binder, Fisher boom sprayer w/rinse tank and Kawasaki engine, 4 bale round bale trailer w/engine & hydraulics, 3 row I&J cultivator w/liquid tank, peerless roller mill w/blower PTO on wheels, NH bin wagon, manure pump w/12" alum. pipe, E.L.S. 900 gal. dual axle liquid manure tank spreader, 2 bottom White Horse plow, 2 way JD plow, 10' 3-section harrow, 11' cultipacker, NH 17 ground driven manure spreader, forecart auto turn w/brakes, 4' harrow & cultipacker, 3 pt. 6' JD scraper blade, potato plow, Farmbilt 16' flat bed wagon w/corn sides & chute, Prime Mover forklift w/gas engine, 90' hay conveyor w/hydraulic motor, Gandy applicator, liquid applicator for hay, acetylene torch on cart, 30' extension ladder, Ontario 10 hose grain drill, Lincoln welder w/B&S engine & starter, hydraulic engine hoist on wheels, Grizzley table saw w/5 amp air motor, floor drill press w/air motor, tripod pipe vise, Wayne adjustable pipe threader, hydraulic jacks, misc. air tools, impact wrench, bolt bins & bolts, Rockford motor clutch, 250 ga. steel tank, 500 gal. polytank.

MILKING EQUIPMENT - 2 cylinder Deutz engine, Boumatic vacuum pump, 5 HP Curtis air compressor, 5 HP cooling compressor, 4 cylinder Perkins engine w/hydraulic pump & oil tank, 4 Westfalia milker units w/Bio-matic claws, 3-75 lb. milk buckets, 2-65 lb. milk buckets, Sputnik, tank washer, Bender milker washer, Gas Lantern, 65 cow Herdex breeding chart, 2-12 v electric fencers, Delaval water bowls, wooden silage carts, metal cart, lime spreader, wheel barrow, cow clippers, hay racks, steel & fiberglass fence posts, 3' fan w/cage, shovels, forks, brooms, shop tools & many more items.

Sale By: Jonathan & Mary Zook

ORDER OF SALE - small farm items, milking equipment, hay & silage, farm machinery, heifers, mules

Auctioneers: Leon D. Kurtz AU-000522-L (610) 593-5387
J. Omar Stoltzfus AU-001912-L Amos Stoltzfus AU-002771-L
Lunch Available