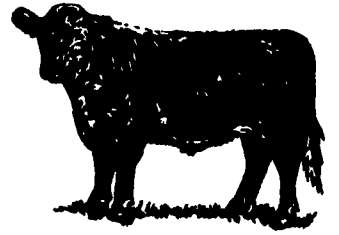


## Royalty Eager To Promote Pennsylvania Angus



At left, some of the Angus royalty were not correctly identified in last week's issue of *Lancaster Farming*. The correct names, front from left, are Princess Leah Walton, Kennett Square; Angus Queen Hope Long, Airville; 2002 Angus Queen Jamie Hower, Bethlehem; and Princess Samantha Semrau, Millerstown. Back, from left, are Princess Jennifer Hower, Bethlehem; Sweetheart Kate Livingston, Dover; Sweetheart Katrina Frey, Quarryville; and Sweetheart Kim Long, Airville.

**Lancaster Farming's Classified Ads Get Results!**

R E D W I N G S H O E S

# SHELTER FROM THE STORM



W O R K H A R D

*Fitting You Right Is Our #1 Priority.*

ALLENSVILLE

Allensville Shoe Shop  
Box 7 State Route

MADISONBURG

Fisher Harness &  
Shoe Shop  
Star Route, Box 47

MIFFLINTOWN

Lost Creek Shoe Shop  
RD #1 Box 88

REHRERSBURG

Leo's Shoe Store  
Godfrey St.  
717-933-8169

HONEY BROOK

Brandywine Shoe Shop  
1620 Cambridge Rd.

MARTINSBURG

Zimmerman Harness  
RD 2 Box 36  
814-793-3961

MILLERSBURG

Tall Pines  
Country Store  
796 Kessler Rd  
717-362-3024  
(voice mail only)

SPRINGFIELD

Red Wing Shoe Store  
511 Baltimore Pike  
610-544-1664

LANCASTER

Red Wing Shoe Store  
106 S. Centerville Rd.  
Woods Edge Plaza  
717-509-1990