

Anthony L.

LANDIS

EPHRATA
AUTO SALES

1589 Division Hwy., Ephrata, PA 17522
Rt. 322, 1 mi. east of Rt. 222 (717) 355-0644



1995 FORD F-150XL
4.9L, AT, PS, PB, A/C, 98,000 Mi.,
P-Locks, AM/FM/Cas., White
\$5,995

"Low Miles - Low Price"



2000 Mack CS300P Mack Diesel, 6 speed, 24' van with lift gate, 33,000 lbs GVW, 88,000 original miles, this unit needs clutch work and tires

\$13,900 Make Offer!

Call Ray at 856-424-6300

35

TRUCKS AND TRAILERS

2002 Barrett alum stock trailer, 8x20, 7ft high, like new, approx 3500 miles. 570-398-2688

1983 Ford L8000 dump truck w/16' silage body, Cat 3208 motor, 10-spd Road Ranger, air brakes, 35,000 gvw, ready to work. \$8900. 570-265-9033

1987 Ford F700 dump, Cummins dsl, Allison auto, under 80k mi., contractors backpack, 6yd dump body. Best truck I ever owned! 908/537-4747

40' aluminum flat trailer, Furlott, 40' box trailer, Chipvan. Ready to go. Reduced Price. 717-436-9986 of 5pm

Freightliner day cab tractor, 1984, 350 Big Cam Cummins, 9 spd., tandem, spring, gd reliable truck \$6,500. 570-546-5574.

28' x 102" VAN, 1985 trailmobile, very nice \$900. 570-546-5574.

'88 Ford F250, 4x4, 1-owner, new eng, auto towing pkg, speed control, AC, bed liner & cap, Cobra CB, red & white w/1999 car & equipment trailer. Will separate, \$6300. 717-721-6428

Toyota 2000 Tacoma, 4cyl, 5 spd, ext cab, 30k, \$13,300. 610-347-1809.

1979 Int'l Triaxle Dump Truck, set up for grain hauling, 18' steel body, 400 Cummins, new hoist \$18,500/obo. 610-987-6136.

1990 White Volvo, 3176 cat eng w/9 spd trans, \$5000. 1991 Peterbilt, 3176 cat eng, w/9spd trans, \$6,000. 1993 Freightliner, sleeper, 430 detroit eng, w/9 spd trans, \$5,000. 717-295-2442

34' gooseneck flatbed, excellent, 3 axle, 20k #, \$7200. 302/398-3219

Dodge 2001, New 3500, diesel, club cab SLT, heavy towing package, dual wheels, bed liner, fold-up cover, heavy duty winch 3/8 cable, 7500 mi. 6 spd, 4wd, priced reduced \$10,000! 856-785-2579.

1993 Peterbilt 378, 18 spd, 63" flat top, real good cond, well taken care of, deep blue. 717-776-7806

93 Chev G30 Cube Trk, 69,700 Orig. Mi., Exc. Cond., V8, Auto w/ Overdrive. 570-799-0148.

'94 frameless East dump trailer, 40'x96"x78" sides, air ride, spread, roll tarp, ten alum wheels, good tires & brakes, overall good cond, \$15,500. 215-249-1227.

1978 Int truck, 18' flatbed, new eng, \$1,200 obo. 301-596-9700.

'99 F250 extended cab, 4wd, power stroke dsl, 6 spd trans, 55,000 mi, \$23,500 trades considered. 814-793-3023 after 5pm

\$12,500 obo

1990 GMC - Isuzu
C-70 rollback, 6 cyl diesel, 6 speed, 2 speed rear, 26 ft Jerr Dan Super 10, equip bed w/tire pockets, new tires, brakes, 33,000 GVW, 106,000 miles
610-273-2423

'96 Peterbilt
6WD, 8-Spd. Trans., 10 Yd. Mixer
\$24,500 with or without mixer
610/589-5555

1978 Mack R model, 5 speed, Nu-Way
air suspension, air ride cab, PS, AC, 237 motor reworked, nice, \$5,000 obo
717/484-0907

1993 Freightliner 42S Cat Wetline,
851,000 miles, 340 on overhaul, with 1993 39 ft. framless East dump trailer, 64 inch sides, twoway tailgate, 3/8 floor closed tandem. **\$28,000**
Ph. #570-322-6526

1976 IH 4200, 52,000 GVW,
330 hp, 13 speed w/1985 Eby alum. grain body, ex. cond., \$15,500, Elverson, Berks Co., PA
(cell) 610-476-2731

\$10,500

1995 GMC Topkick
18ft box w/Lift Gate, 3116 Cat diesel, 5 spd & Auto, 89K, AC, 27,100 GVW, Very Nice, 3 Available
South Mountain Auto Sales
19 Koser Rd., Shippensburg, PA 17257
717/532-6707



1995 FREIGHTLINER FLD-112 Detroit Series 60 11 1 Engine, Rockwell RMX-9135 B Rockwell 40-145 Rears, 4 33 Ratio, 22 5 Tires, Pilot Wheels Stock #1519 \$7,900



1993 GMC TOPKICK LOW-PRO, 6.0 Litre Gasoline Engine, Automatic Transmission, Single Speed Rear, 225-70R-19 5 Tires, Budd Wheels, 21 Foot Dry Van, Lift Gate \$7,900



1988 FORD F-700 14 foot flat bed, 6.6 razal Engine, Ford FS-4005 B Transmission, Eaton 2 Speed Rear, 11R-22 5 Tires, Dayton Wheels Stock #1512 \$5,500



1987 INTERNATIONAL S-MODEL, DT 466 Engine Rebuilt with 40,000 Miles, FS-6106 A Transmission Single Speed Rear 4 56 Ratio 11R-22 5 Tires Budd Wheels, Propane Body Could Be A Flat Bed, Lift Gate, Stock #1335 \$7,900

EXTRA EXTRA!!!!
NOW STOCKING
CHAINS - 16 AND 20 FOOT
BINDERS - SPRING STYLE
AND RATCHET
PINTLE HITCHES - 5 TO
45 TON AND
ALL OTHER BUYER
ACCESSORIES.



1996 PETERBILT 377, 435 Caterpillar Engine, RTLO Super 10 Speed, DS-402 3.70 Ratio, Alum Front Pilot Wheels, Dual Stacks, 285-75-24 5 Tires \$18,900



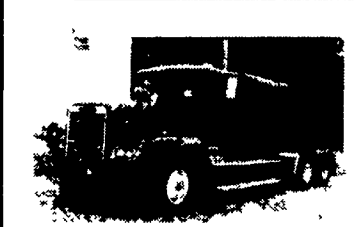
1994 FREIGHTLINER FLD-112, 3176 B Cat Engine, RTX-12609 B Transmission, DS-404 Eaton 3.90 Ratio 22 5 Tires, Pilot Wheels Stock #1524 \$7,900



(2) 1999 NISSAN UD, 4 Cyl Diesel Engine 145 HP, 5 Spd Trans, Single Speed Rear, 12 Ft Insulated Body, Barn Doors \$15,900



1995 INTERNATIONAL 4700 (NON CDL), Roll Back, 444 E IHC Engine, 5 Speed Trans, Single Speed Rear, 19,000Tires, 19 2 Foot Chevron Bed Alum, Light Bar, Tool Boxes \$17,900



1993 FREIGHTLINER FLD-120, 3406 Cat Engine 350 HP with Jake RTX-14709H Trans, Rockwell 40 145, 3 91 Ratio Rears, 295-75-22 5 Tires, Steel Wheels Stock #1473 \$8,900



1985 INTERNATIONAL 9670 BOX TRUCK, 400 Cummins BC, Jake Brake, 9 Speed Transmission, 23,000 Pound Rear Newway Suspension, 11R-24 5 Tires, Alum Wheels, 20 Foot Box \$8,900



1999 HINO FE, 6 Cylinder Hino Diesel, Automatic Transmission, Single Speed Rear, GVW 25,950, 11R-22 5 Tires, Budd Wheels, 22 Foot Body \$8,500

FIRESTONE MOTORS, INC.

330 S. THIRD ST. • LEMOYNE, PA • (717) 763-7721 • TOLL FREE 1-888-668-6778

www.firestonemotors.com

TIME FOR THE SPRINTER

Freightliner of Harrisburg

TEST IT NOW.

www.sprintervans.net

TIME TO TAKE A TEST DRIVE.

- Ray Marino - (800) 871-1935
Freightliner of Harrisburg / 4400 Chambers Hill Road / Harrisburg, PA 17111
- Rick Stetler - (800) 769-9887
Freightliner of Lancaster / 1675 Rohrerstown Road / Lancaster, PA 17601
- Scott Shoemaker - (888) 200-2229
Freightliner of Hagerstown / 11611 Hopewell Road / Hagerstown, MD 21740
- Rich Horner - (866) 788-8587
Freightliner of Philadelphia / 2720 Bartram Road / Philadelphia, PA 19007

