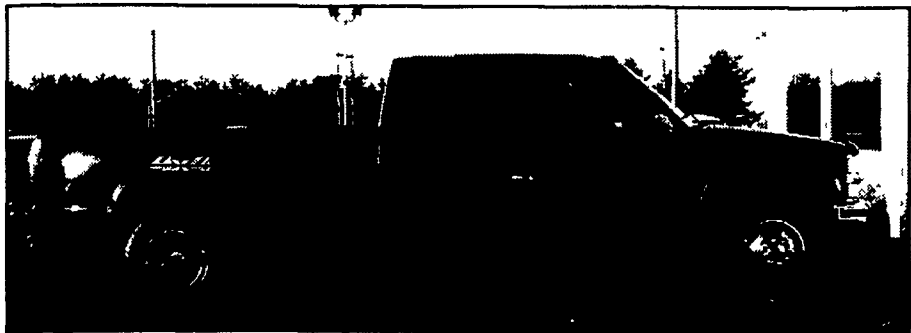




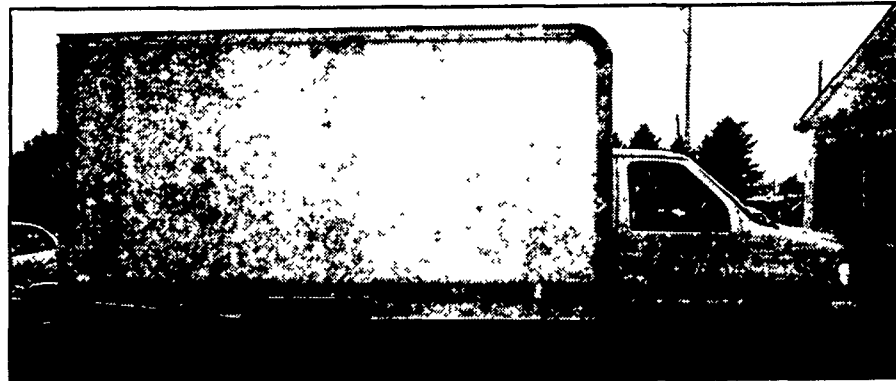
Ziemer GMC



NEW HOLLAND, PA



1997 CHEVY 3500 CREW CAB DUALY 4x4
Silverado, Turbo Diesel, Auto., AC, PW, PL, Cruise/Tilt,
P. Seat, Leather Buckets, Super Clean!
Another Beautiful Local Trade!
Was \$15,995 Now \$13,900



2000 FORD E-350 14' CUBE VAN
5.4 V/8, Auto., AC, PS, PB,
Super Clean! Another Beautiful Van Fresh Off Lease!
Was \$23,987 Now \$18,900



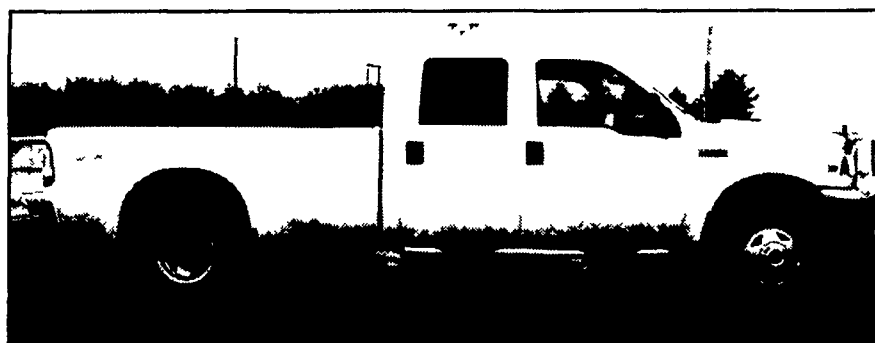
2001 FORD E-350 14' CUBE VAN
Powerstroke Diesel, Auto, AC, PS, PB, AM/FM, Low Miles!
Super Clean! Another Beautiful Van Fresh Off Lease!
Was \$27,995 Now \$21,900



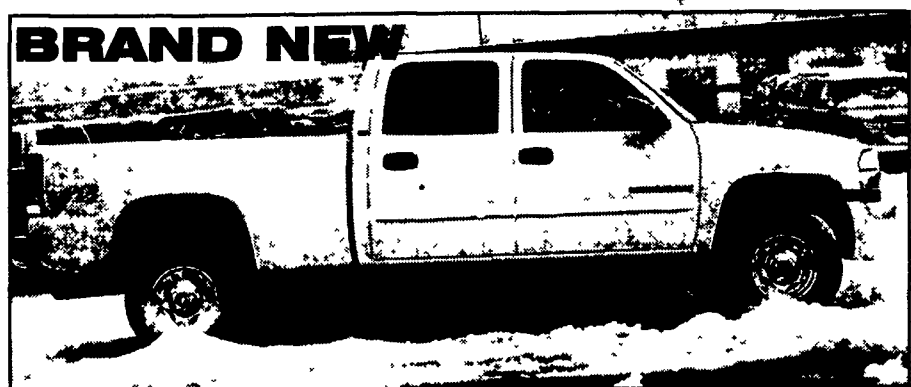
2000 FORD F250 XL SUPERCAB 4DR 4X4 Long Bed
Powerstroke Diesel, Auto, O/D, AC, PS, PB, Cass., 20,000
Orig. Miles! Gorgeous! Another Beautiful Local Trade!
Was \$28,995 Now \$24,900



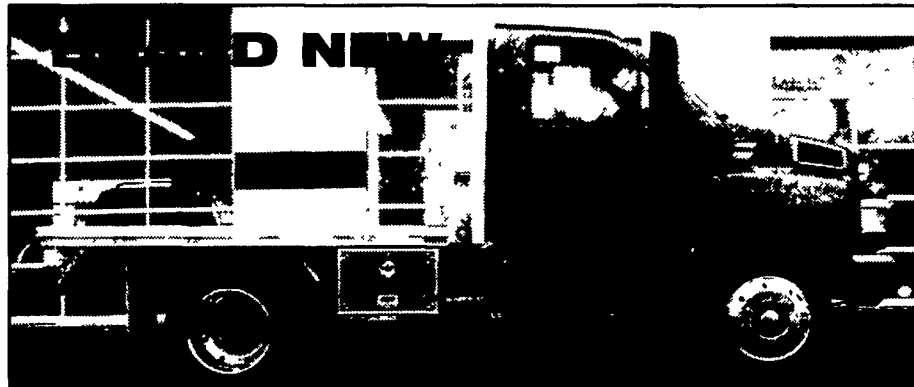
2001 FORD F250 SUPERCAB 4X4 LARIAT, V/10, Auto,
AC, PW, PL, P Seat, Cruise/Tilt, 6 Disc. CD, Cap! None Nicer!
Another Beautiful Local Trade!
Was \$29,995 Now \$26,900



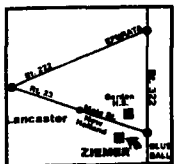
1999 FORD F350 CREW CAB DUALY XLT 4X4
Powerstroke Diesel, Auto O/D, AC, PW, PL, Tilt/Cruise,
40/20/40 Bench, CD/Cass., Super Clean! Another Beautiful
Local Trade! Was \$29,987 Now \$27,900



2003 GMC SIERRA 2500 H.D. CREW CAB 4x4 SLE
6000 V/8, Auto O/D, AC, PW, PL, Cruise/Tilt, Keyless
w/Alarm, Cass./CD, RWD, Heated Mirrors, H.D. Trailering,
Alloys, Locking Diff., P/Seat, Buckets!
MSRP \$38,478 Sale \$32,805*



2003 GMC 4500, 16,500 GVW, 8' EBY ALUMINUM
Flatbed w/Gooseneck/Tool Boxes! Duramax Diesel, 6 Spd, AC,
Tilt/Cruise, Locking Diff., Air Ride Seat, Exhaust Brake, Dual
Amp Generators, 40 Gal Tanks, Alum Wheels, CD, Big Truck
Feel, Drives Small! MSRP \$44,329 Sale \$37,725



Hours: Mon.-Thurs. 9-8:30
Fri. 9-6 & Sat. 9-3

Ziemer
A Name You Can Trust
BUICK PONTIAC GMC TRUCK

www.ziemernewholland.com

*Sale Price on New Includes Factory Rebate/Tax, Tags Additional.
Price Good Thru 2/28/03

717-354-4451

1-800-824-2277