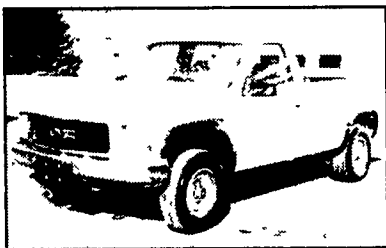


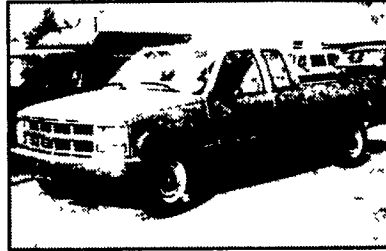
1996 CHEVY CHEYENNE 2500, 4x4, 350 Auto, PS, PB, Cruise, Tilt, Air, AM/FM Cass, 8600 GVW, 62,000 Miles, New Tires, Dark Green
\$12,500



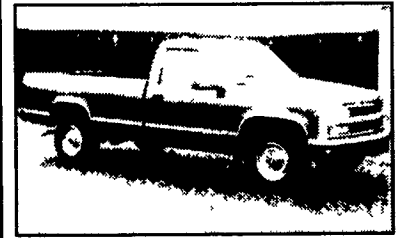
1995 GMC SL 3500, 4x4, 454 Auto, PS, PB, Air, AM/FM 9000 GVW, 91,000 Miles, New Tires
\$10,500



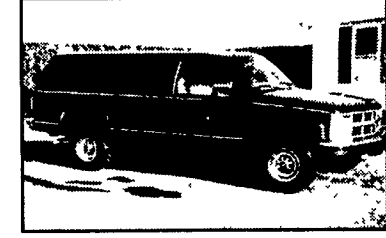
1999 CHEVY CHEYENNE 2500, 2WD, 350 Auto, PS, PB, Cruise, Tilt, Air, AM/FM Cass, 8600 GVW, 62,000 One-Owner Miles
\$10,900



1997 CHEVY CHEYENNE 2500, 2WD, Ex Cab, 350 Auto, PS, PB, Cruise, Tilt, Air, AM/FM Cass, 8600 GVW, Towing Package
\$10,900



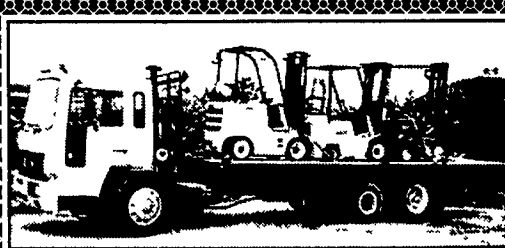
1995 CHEVY CHEYENNE 3500, 2WD, 350 Auto, PS, PB, Cruise, Tilt, Air, AM/FM Cass, 9000 GVW, 60,000 Miles, Like New
\$9,400



1996 CHEVY CHEYENNE 2500, 4x4, Suburban, 350 Auto, PS, PB, Cruise, Tilt, Air, AM/FM Cass, Towing Package, 81,000 Miles, New Tires
\$12,900

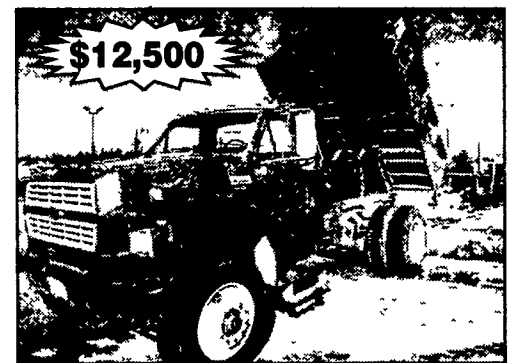
A&J AUTO SALES

798 E. Main St., Rt. 322 East, Ephrata, PA 17522
717-733-2873



1987 Volvo FE615, 175 HP, Turbo Diesel, 6 Speed, Air Lift Axle, 46,900 GVW, 26 Ft. Jerr Dann Rollback, Very Good Cond, Asking **\$15,500 OBO** or Partial Trade.
570-437-3669 ** 570-204-1513

"THINK SPRING"



\$12,500
'94 Ford F800 Dump Truck, Cummins Dsl, 6 spd. Trans., Air Brakes, 33,000 GVW, New Tires, 134,000 Original Miles
Call Ray at 856-424-6300



131 Kline Rd., Bethel, PA 19507
We're Located Right On I78 @ Exit 17

WE BUY TRUCKS

717-933-9792

Fax 933-9782 www.besttrucks.net



1995 GMC 10' Hi Cube, Diesel Automatic, 125k Miles, White
\$8,500



1994 International 4700, 24 Van DT408-190 hp (Engine Work Completed), 5 Speed, 29000 GVW Air Brakes, White Spoke Wheels
\$8,500



(4) 1995 IHC 8100 Single Axle Day Cabs, Detroit SR50 315hp, 9 Speed, 300-500K Miles, Air Ride, AC, PS, Cruise, Hld Mirrors, 75R22.5 Tires, Prices Starting At
\$10,500



1985 International CO9670, Cummins 350 hp, 10 speed, 500k miles, AC, 2 Alum Steer Wheels, Alum Bumper, Maroon Clean!
\$4,000



1987 Ford LN8000 10 B Beverage Truck Hackney Aluminum Body CAT 3208 210hp Allison Automatic, 150K Miles, 32 600 GVW, 4 Full Bays, 11R20 New Mich Steer Tires, Fit Soda Pallets, 53x105 51 Over Wheels
\$6,500



1995 FTL FL112, Tandem Day Cab, 3176 365 HP, 9 Speed, 743K Miles, Air Ride, 10 Alum Wheels, Fuel Hauler Specs, Red
\$13,000



1992 GMC Digger Derrick, CAT 3116 185HP, 5/2 Speed, 95K Miles, 1993 TeCO Model A33SC B2 ASXO Upper Controls & Bucket, Winch Capacity 12,000 lbs., 90% Virgin Rear Tires, 7K Hours
\$17,000



1998 Volvo VNL610, 12.7 430/470 HP, 10 Speed, 605K Miles, 10 Steel Wheels, Single Bunk, White Wheel to Wheel, Lease Maintained
\$26,000



(4) 12 Bay Beverage Trucks, 1989 Ford LN8000, 7.8 215 hp, Automatic, 32,000 GVW, Air Brake, White, 112/117/115/118k miles, Mickey Bodies
\$6,500 EACH



1998 IHC 9200 48" Sleeper, Cummins M11-330HP, 10 Speed, 800K Miles, White, Jake Brake, 181" Wheel Base
\$12,500



1996 IHC 9200 Tandem Day Cab, Cummins M11-330HP, 10 Speed, 850K Miles, White, Jake Brake, 181" Wheel Base
\$9,500



1990 & 1983 Chevrolet 14' Gas Van, 5 Speed, Green, Non CDL, Hydraulic Brakes, Runs, Not Inspected
\$1,000 ea.



1995 FTL FLD12064ST, 48" Flat Top, CAT 3406-410hp, 15 Speed, 600K Aluminum Wheels, 3.73 Ratio, Jake Brake, Dual Stacks
\$10,900



1987 Ford LN8000 14' Dump, 7.8 210 dsl Allison Automatic, 29,900 GVW, Air brakes, AC, bud wheels, chrome bumper, Air Tail gate, Red, 195k miles
\$7,900



1998 International 8100 10' Steel Dump, L10 280, 9 Speed, 262K Miles, 11,000 GVW, Air Brakes, Red Cruise, Air Lines & Pintle Hook In Rear
\$29,900



1992 Pete 378 48" Sleeper, Detroit 60 Series 350hp, 9 Speed, Spring Suspension, AC, 700k Miles, White & Purple, Removable Sleeper
\$6,100



2001 Ford F-150 Supercrew 8 Cyl., 5.4L, Auto., Loaded, CD, #P8672
\$21,995



2002 Ford F-150 Supercrew 8 Cyl., 5.4L, Auto., Loaded, CD, #P6374
\$26,995



1997 Ford F-150 XLT 6 Cyl., Auto., Loaded, Long Bed, #P3417
\$11,800



1999 Ford F-250 XLT V10, Auto., Fully Loaded, #P6816
\$21,995



2000 Ford F-150 XLT 8 Cyl., Auto., Loaded, 4 Doors, #7525A
\$21,995



1993 Ford Bronco Eddie Bauer 8 Cyl., Auto., Loaded, Leather, #5748A
\$9,995



1995 FTL FLS1264ST, 48" Flat Top Sleeper, Cummins N14-350HP, 9 Speed, Black, 580K Miles, Air Ride, Jake Brake, Lease maintained
\$11,500



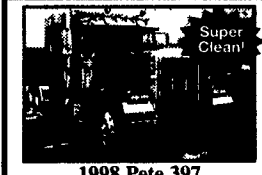
1998 Pete 379 119" hood, 63 Unibilt Ultracab Sleeper, Detroit 12.7 430/470 HP, 0 Speed, 3.90 Rear Ratio, 628K Miles, 9 Speed Tires, 10 Aluminum Wheels, Tilt/Tele, Accent Interior, Jake Brake, Black
\$27,900



1995 IHC 8200 (6) Single Axle Day Cabs, Cummins M11-280hp, 9 Speed, 7-800K Miles, Spring Suspension, AC, PS, Prices Starting At
\$8,750



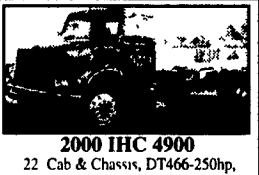
1998 Ford F700 10' Steel Dump, 7.0 Gas, Automatic, 39K Miles, 26000 GVW, Hydraulic Brakes, White, 10R22.5 Tires, Bench Seat, 60% Tires
\$16,100



1998 Pete 397 63" Sleeper, 12.7 500hp, 13 Speed, 568K Miles, Red, American Class Interior, Pete Low Leaf Air Ride, 95% Virgin Rubber
\$40,000



1990 IHC 8300 Tandem Day Cab, Cummins NTC 315, 9 Speed, 299K Miles, Spring Suspension, White, Not Inspected, Runs Great!
\$5,500



2000 IHC 4900 22 Cab & Chassis, DT466-250hp, 6 Speed, 29,000 GVW, Hydraulic Brakes, AC, 6 Alum Wheels, Alum Bumper, Leather Wrap Steering Wheel, Premium Interior Power Windows & Locks, Tilt & Tele Steer Wheel
\$16,500



1993 IHC 8200 Tandem Day Cab, Cummins N14-350, 9 Speed, 300K Miles, Air Ride, White
\$8,500



2000 Volvo VNL610 Detroit 500 hp, 10 Speed, 610K Miles, White, 10 Alum Wheels, Tank Skirts, Tire Brake, 95% Virgin Tires
\$32,500



(2) Storage Trailers: 1980-1984 12' x 36' with Spring Suspension, Swing Doors
\$1,400 Ea.



Van Bodies for Sale: Mostly 1995's, 22 & 24' Long, Roll Up Doors
\$750 Ea.



1998 IHC 4900 22' Flat Bed, DT466 195HP, 6 Speed, 120K Miles, 25,500 GVW, Hydraulic Brakes, Yellow, AC
\$17,900

"Bid on our trucks at:" www.truck-network.com