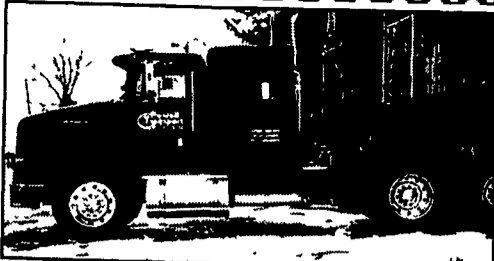


1987 International Wrecker Tandem, 13-spd, 350 Cum., Jake, under reach, 35 ton \$35,000 obo (443)506-7587



1994 International 9200
3176E Cat 350, 9-Speed, 547,000 Miles, 211" WB, Wet Line, Removable Sleeper, 6.2 Mpg, Cruise, Power Mirror w/Defrost, \$11,000 obo (717)665-5877



FOR SALE
AG WRAP SALT SPREADER
Electric Start Honda Engine, Hydraulic Drive Salt Spreader-Fits in full size pickup
One Demo Unit Left - \$2,950
Call 800-442-5043 ask for Terry

GM Goodwrench Engines

feel the confidence



THE FEELING IS GENUINE



- 12 Month Minimum Warranty
- Limited 36 Month Warranty
- Shipped As Shown

86 and prior carbureted 4 bolt main....\$1,370
87-95 TBI, Truck, 2 bolt main.....\$1,799
87-96 TBI, 3/4 Truck, 4 bolt main.....\$1,899

Pro-built Custom Engines



MORE THAN JUST POWER.

470 HP-355CI Street / Strip

Carb to pan pkg. Includes Fuel Pump, Distributor, Wires, Demon Carburetor, Victor Jr. Intake and Dyno Sheet

Only \$4,500

355CI TBI Upgrade

325 HP 400FT-LBS, Dyno Proven HP 87-95 Trucks With Dyno Sheet

Only \$2,995



A Division of Jones Family of Dealerships

Prices are subject to change. Prices do not include shipping. Please call for the best possible shipping prices for you

1-800-827-0129

TIME FOR THE SPRINTER.

Freightliner - a Brand of DaimlerChrysler



Freightliner of Harrisburg

TEST IT NOW.

www.sprintervans.net

TIME TO TAKE A TEST DRIVE.



- Ray Marro - (800) 871-1935
Freightliner of Harrisburg / 4400 Chambers Hill Road / Harrisburg, PA 17111
- Rick Stetler - (800) 769-9887
Freightliner of Lancaster / 1675 Rohrerstown Road / Lancaster, PA 17601
- Scott Shoemaker - (888) 200-2229
Freightliner of Hagerstown / 11611 Hopewell Road / Hagerstown, MD 21740
- Rich Horner - (866) 788-8587
Freightliner of Philadelphia / 2720 Bartram Road / Bristol, PA 19007

©2002 DaimlerChrysler Vans LLC

JONES QUALITY PRE-OWNED BEST BUYS!

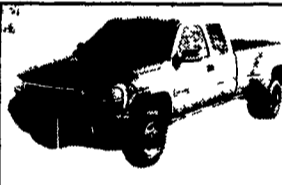
PONTIAC • HONDA • GMC TRUCK • ACURA • USED CAR CENTER
1335 Manheim Pike • Lancaster, PA



QUALITY PRE-OWNED BEST BUYS!



NEW 2003 GMC C4500 DUMP BODY
Duramax Diesel, Allison Automatic & Much More!
#41252, MSRP \$44,916
SALE \$40,400*



NEW 2002 GMC K3500 XCAB 4x4
Allison Auto, Air, SLE, 8100,
#40623, MSRP \$38,453
SALE \$31,198*



NEW 2002 GMC SAFARI AWD CARGO VAN
Auto, Air, V6, Trailer Package,
#40525, MSRP \$24,923
SALE \$20,414*



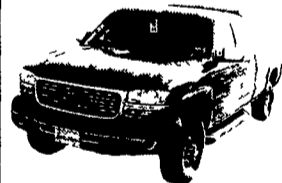
2002 GMC K35 CREWCAB 4x4
Diesel, Duramax, Allison Auto, SLT, Dk Blue
#6988, Was \$38,900
SALE \$35,100



2001 GMC K1500 XCAB 4x4
SLE, Air, 5300 V8, Loaded
Was \$25,500
SALE \$23,100



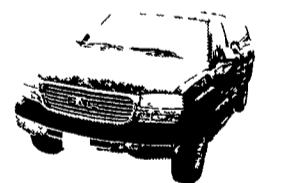
NEW GMC G3500 15 PASSENGER VAN
AT, Air, V8, & Much More
#41640, MSRP \$32,094
SALE \$28,800*



2001 GMC K2500 XCAB
4x4 SLE, AT, Air, V8
Was \$26,400
SALE \$23,500



2001 FORD EXPLORER SPORT TRAC 4x4
XLT, AT, Air, V6, 16K Miles,
#7078, Was \$24,400
SALE \$21,000



2001 GMC K2500 XCAB 4x4
AT, Air, SLE V8, #7031, Was \$26,900
SALE \$23,888



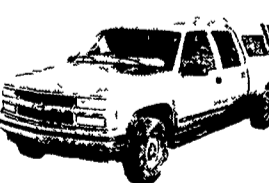
2000 FORD EXPEDITION
4x4 XLT, AT, Air, Leather, Black
Was \$21,900
SALE \$19,900



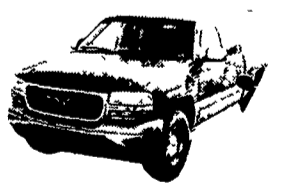
2000 GMC K3500 CREW CAB 4x4
Diesel, AT, Air, 6.5 Turbo, SLE, #6955, Was \$25,900
SALE \$23,300



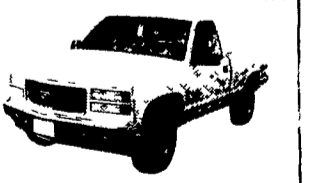
2000 GMC SONOMA HI RIDER XCAB 4x4
AT, Air, V6, Nice
Was \$19,900
SALE \$16,500



2000 CHEV K2500 CREW CAB 4x4 SILVERADO
454, AT, Air, Loaded
Was \$26,500
SALE \$23,500



99 GMC K15 XCAB 4x4
AT, Air, SLE, V8, Cap
Was \$22,000
SALE \$19,100



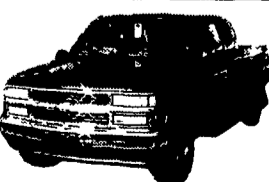
98 GMC K15 4x4
SLE, 5 Spd, 350 Air, 6' Bed, 25K Miles #7061,
Was \$17,700
SALE \$14,700



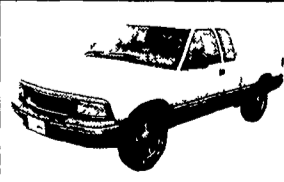
98 CHEV SUBURBAN 4x4 DIESEL
6.5 Turbo, LT, AT, Air, Black,
#6984, Was \$24,400
SALE \$20,400



1997 GMC K25 XCAB 4x4 DIESEL
4x4 Diesel SLE, AT, Air, 6.5 Turbo
#7005, Was \$14,100
SALE \$12,500



97 CHEVY K15 XCAB 4x4
LS, AT, Air, 350
SALE \$16,500



96 GMC SONOMA XCAB 4x4
AT, Air, V6, #7025, Was \$12,300
SALE \$9,400



93 GMC K15 XCAB
4x4, AT, Air, 350, SLE
Was \$11,900
SALE \$9,550

*All New Vehicles Include GM Rebates Included In Sale Price