

35

**TRUCKS
AND
TRAILERS**

7511 Allentown Blvd.
Harrisburg, PA 17112

**75 TRUCKS
IN STOCK**

**AFFORDABLE
CARS AND TRUCKS, INC.**

"You Gotta Believe!!"

New Exit #72A, Rt. 81 N; Rt. 22 East of Harrisburg; 3 Miles North of Hershey Park

717-652-1925
FAX 717-652-4888
www.autotrader.com/view/
affordable car and truck

94 FORD F250 XLT 4X4, EXT CAB

Longbed, Turbo 7.3 Diesel, AT, AC, PW, PDL, Cruise, Tilt, & More, Real Clean Truck, 99K
\$12,500



96 FORD F250 XLT 4x4

H D Ext Cab Longbed, 7.3 Powerstroke with 5-Speed, AC, PW, PDL, Cruise & Tilt Only 80K Very Rare Truck in Prime Condition, Farmers & Pullers This is What You've Been Waiting For!
\$18,995



89 FORD F150 XL 4X4

V8 302, 5-Speed 8' Bed, Very Clean Truck, 1-Owner, 100,000 mi
\$4,500



**99 FORD F350 XLT
QUAD CAB 4X4**

Longbed 9900 GVW 7.3 Powerstroke, Rare 6 speed AC, PW, PDL, Tilt, Cruise, & More Mint Cond Must See! 100,000 Mi
\$20,995



**97 FORD F250 XLT
4X4 EXT CAB**

Longbed, 7.3 Powerstroke DSL, AT, AC, PW, PDL, Tilt, Cruise, Loaded Blue 2-Tone, Perfect Shape, 100,000 Mi
\$16,995



**96 FORD F250 XLT
4X4 EXT. CAB**

7.3 Powerstroke, DSL, Longbed, AT, AC, PW, PDL, Tilt, Cruise, Black/Silver Only 60,000 Mi New Condition
\$18,995



**94 FORD E-250 ECONO-
LINE WORK VAN**

5.8 351 V8 Motor, AT, AC, PS, PB, Very Clean Van, Excellent Condition
\$4,995



98 FORD F350 SUPREME

18' Box Truck 11,500 GVW's, Rollup Door, Plank, New Tires, Brakes, & Insp., AT, AC, Stereo, 5.4 Triton, 100,000 Mi., Superb, Sharp We used truck all year!
\$8,999



**88 CHEVY 1500 4x4
SUBURBAN SILVERADO**

3rd Seat, Dual AC & Heater, Barn Doors, All Black, Only 120K, Very Sharp, No Rust, Like Showroom Shape
\$4,500



00 FORD F350 XLT 4X4

Super Duty Quad Cab, Dually 1-Ton 6 Speed, Powerstroke Dsl, 100,000 Mi, AC, PW, PDL, Cruise Tilt Stereo, Alloys & Much More Highly Desired Pulling Machine, Looks & Drives Like New!
\$21,995



**96 FORD F350 XLT 4X4
CREW CAB**

Longbed, 7.3 Powerstroke Dsl, 5-Speed, AC, PW, PDL, Tilt, Cruise, Only 112K, Leer Cap, Looks & Drives Like New!
\$20,995



97 FORD 150 XLT 4X4

V8, AT, AC, PW, PDL, Tilt, Cruise, Alloys, This is A Super Clean Truck, Mint Condition, 1-Owner, Highway Driven Truck, You Won't Believe Your Eyes! 140K
\$8,495



96 FORD F250 XLT 4x4 H.D.

8600 GVW, 460 V8, AT, AC, PW, Pdl, Cruise, Tilt, All Black & Sharp, Like New Cond! 100,000 mi
\$9,995.



**00 DODGE RAM 2500 4X4
QUAD CAB**

Longbed, Cummins Dsl, AT, AC, PW, PDL, P Seat, Cruise, Tilt This is a 1-Owner Southern All Original Showroom Truck Guaranteed to Please Anyone 101K
\$20,995



94 FORD F250 XLT 4X4

H D 8600 GVW PU w/Hydraulic Dump Bed - 5.8 351 V8 Motor, AT, AC, PS, PB, Cruise, Tilt, Cloth & More, Nice Truck & Very Well Kept Mint Condition 100,000 Mi
\$9,995



**88 FORD F150 XLT
EXT CAB 4X4**

Longbed V8, AT, AC, PW, PDL Cruise & Tilt, Very Beautiful, Truck Around 70,000 Miles, Must See & Drive
\$4,995



93 FORD F250 XL 4X4

7.3 Diesel, AT, PS, PB, Just A Real Clean But Basic Truck - Cloth Seat 100,000 Mi
\$6,995



**97 FORD F350 XLT
CREW CAB 4x4**

Longbed, H D, 9900 GVW, 7.3 Powerstroke with Banks Power Pack & Chip, 300 HP, AT, AC, PW, PDL, Cruise & Tilt, Only 70K Truck is Beautiful, 4 New 10 PLY Radials
\$21,995



89 FORD F150 XLT 4X4

Ext Cab, V8, AT, AC, PW PDL New Tires, Leer Cap, 100K Like New Condition, Must See!
\$3,995



97 DODGE 2500 RAM 4x4

Cummins Turbo Diesel, Rare 6 Speed Trans, Only 55,000 Miles, AC, Cloth Seat, Rubber Floor This is the Nicest Looking & Driving Truck I've Ever Seen! It Will Not Last
\$16,995



92 CHEV SILVERADO

2WD, AC, V8, 100,000 mi Up with quilted seats, 100,000 mi Nice Truck Like New!
\$3,995



95 FORD F150 SILVERADO

4x4, 350 V8, No Rust, AT, AC, PW, more looks Like New!
\$4,500



96 FORD F250 XLT 4X4 EXT. CAB

Longbed, 7.3 Powerstroke Dsl, AT, AC, PW, PDL, Tilt, Cruise, Dark Green, 1-Owner In Great Mint Cond Shape 100,000 M
\$14,995

**DIESEL
PERFORMANCE**



Chevy Duramax:

Adjustable Module 30 to 90 HP increase!
AFE performance air filter assy

Dodge 24 Valve:

Adjustable Module 40 to 120 HP increase!
Exhaust & intake upgrades

Powerstroke:

Performance chips 40, 60, 80 hp.
Programmed while you wait!!

SPECIALS:

- 4" EXHAUST SYSTEM FORD OR DODGE \$575.00
- GMC 6.5L LONG BLOCKS..... \$2900.00
- Exhaust brakes..... CALL
- Magnum AFE air filter assy '02 Powerstroke less 10%
- Funnel RAM AFE air filter assy Dodge 94-01 less 10%
- Magnum AFE air filter GMC DURAMAX less 10%
- Digital Pyrometer kit, Boost gauge & gauge pod \$399.00

From The Diesel Specialists For Over 45 years

Penn Diesel Service Co.
Interstate 81 Exit 77, Harrisburg, PA
(800) 535-2913

★ H&L SALES CO. ★

3830 North George St. Extd., Manchester, PA 17345
New Phone Numbers! **866-999-5600 • 717-764-3477 (York)**



1988 PETERBILT 379

Extd hood Cat 425hp, Jake, 13 spd, 63" sleeper, alum wheels, air ride susp
\$7,900 firm.



1993 INTERNATIONAL

Cat 400 Eng, Jake, 9 Speed Trans, Air Ride Susp, Steel Wheels, 183" WB
\$7,900



1995 PETERBILT 379

425 Cat, Jake, 10 spd trans, 63" flattop air ride suspension, 10 aluminum wheels



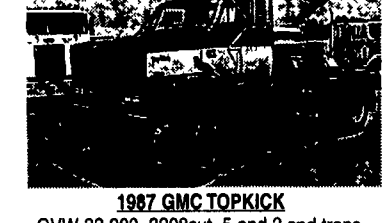
(25) 1990 & 1992 53'x102" Plate Van.

Maximum cube for your dollar



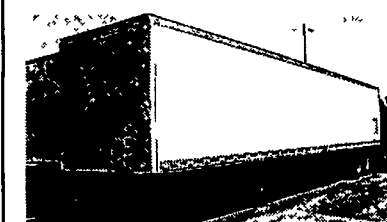
(7) 1992 MULTI TEMP REEFER TRAILERS

Great dave 46'x102" swing doors, (3) side doors, TK super II
\$4,900



1987 GMC TOPKICK

GVW 33,000, 3208cut, 5 and 2 spd trans, flatbed body with 5th wheel package
\$4,500.



(1) 1994 UTILITY 45'x96" FRP VAN

Perfect for bagged products, won't last at \$2,450.



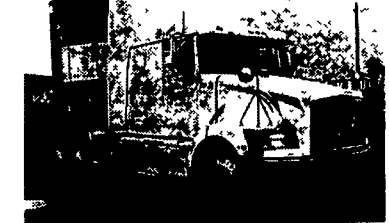
2000 FREIGHTLINER FL60

Cummins Diesel, 215 H P, 6 Speed, PS, AC, 270 WB., 25,500 GVW
\$16,900



1993 FREIGHTLINER FLD 120

Detroit Diesel 12.7, 9 Speed, Air Ride Susp, 48" Sleeper



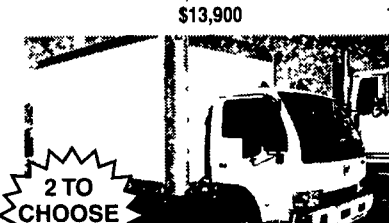
95 VOLVO WIA64TTES

Cummins Diesel, 460 H P, Jake Brake, 10 Speed, Air Ride, 10 Alum Wheels, PS, AC, 589,000 Miles
\$13,900



1996 VOLVO WG 64

11.1 Det., 350 hp Jake Brake 9 speed Spring Susp, Steel Wheels
\$10,900



2 TO CHOOSE FROM

1998 UD 1400

Diesel, 100 hp Manual trans, 1000 GVW, 14 and 16' air body
Starting at \$9,800