



**2002 Chev. 3500 Silverado**  
4x4, Dually, 6.6 Duramax Diesel, Allison Auto, AC, Cruise, Tilt, CD, Pdl's, 9 Ft Alum Flatbed, Gooseneck Hook-up, 12,000 GVW, 3.73 Limited Slip Rear, 850 Miles, Dk Green  
List with bed **\$42,868.75**  
**\$37,900**



**2001 Chev. 2500 HD, LS**  
Ext Cab, 4x4, Longbed, 6.0 Vortec Eng, AT, AC, Pwds, Pdl's, Cruise, Tilt, CD, 4 Drs, 9200 GVW, 4.10 Rear, Clean Truck, 55,000 Miles, Grey  
**\$21,900**

**MARTIN'S AUTO SALES**

1025 W. Main St., New Holland, PA 17557

**(717) 656-6621**

**Woodcrest Motors**

**SPECIALIZING IN TRUCKS & VANS**

1200 North Reading Rd., (Rt. 272) Stevens, (Lancaster Co.) PA 17578

**717-336-3130**



**95 CHEV. SILVERADO**  
2500 Extend Cab 4x4  
6.5 Turbo Diesel AT A/C  
Most Options 88,000 Miles  
Maroon & Tan  
**\$11,500**



**01 FORD F150 XL1 4-Door**  
Extend Cab V6 AT A/C  
Most Options DK Green 76,000 Miles  
**\$10,995**



**98 CHEV. SILVERADO**  
2500 Extend Cab. 4X4  
V8 AT A/C Most Options,  
8,600 GVW, 76,000 Miles  
Black & Gold  
**\$14,500**



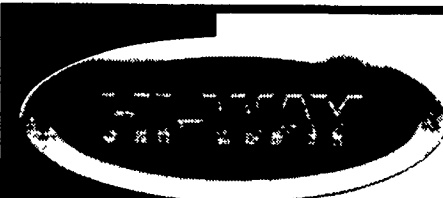
**99 CHEV. SILVERADO**  
1500 Ext. Cab, 3 Dr., LT,  
4x4 5.3 V8 AT A/C Most  
Options 98,000 Miles,  
Light Gold  
**\$14,995**



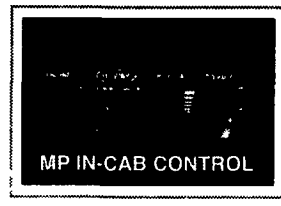
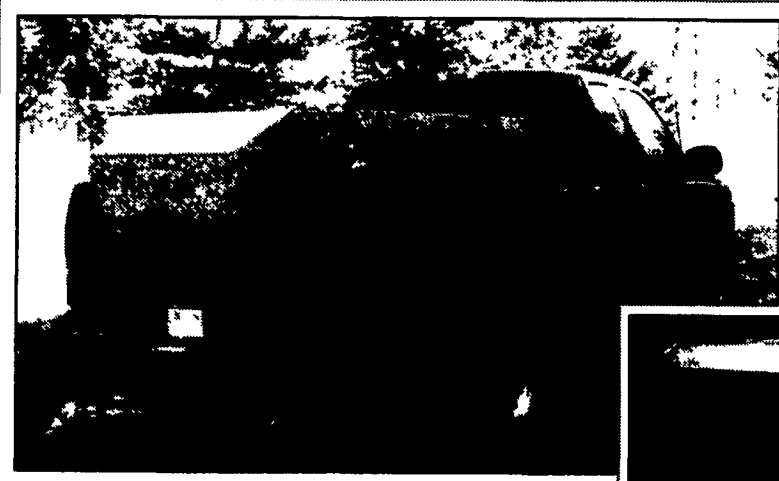
**99 CHEV. SILVERADO**  
1500 Extend Cab 3 Door  
4x4 V-8 5 Spd A/C 98,000  
Miles Gold  
**\$12,995**



**00 FORD RANGER XLT**  
QUAD CAB, V6, AT A/C,  
Cass. & CD Most Options  
71,000 Miles Maroon  
**\$9,995**



**MP  
MODEL P**



The MP pick-up mounted deicing spreader features the following:

- Patent-pending Screen-N-Store™ prevents over-sided material entering the hopper and doubles as an off-season storage stand.
- Easy-to-remove spinner assembly to facilitate service and storage
- Fully welded and sealed hopper to resist corrosion
- Three MP packages available with Tecumseh, Briggs & Stratton, or Honda engines
- Unpainted 304 stainless steel option for added resistance to corrosion

For more information contact:

**ANNVILLE EQUIPMENT CO.**

470 Palmyra-Bellgrove Road, Annaville, PA 17003

**717-867-4631 1-800-233-0520**

E-mail: [aeci@paonline.com](mailto:aeci@paonline.com) Web Site: [annvilleequipmentcompany.com](http://annvilleequipmentcompany.com)

We provide parts & service for new leader spreaders.



Building the best since 1939.

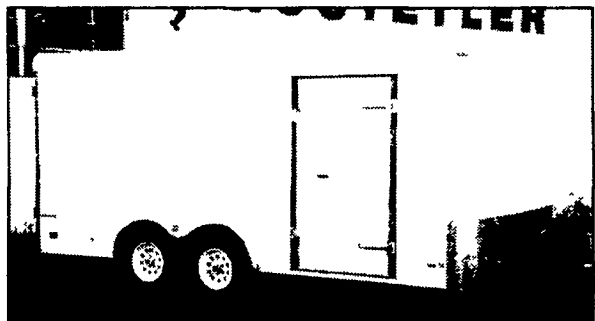


**HOSTETLER**

**Truck Bodies & Trailers**

**717-667-3921**

Milroy Exit off Rt 322  
Between Lewistown & State College



**Pace Enclosed Trailers**

**Journey** Single Axle Trailers, 5'x8' or 10' and 6'x10' or 12'. Call for Colors and Sizes

**Journey** Tandem Axle Trailers, 7'x14' or 16'; Double Doors or Ramp Doors, Side Doors, Electric Brakes

**Cargo Sport** 8'x16' Tandem Axle Trailer, Side Door, Double Rear. Stone Guard.

**Shadow** 24' Car Hauler, GT Package, Call for Details



**Landscape Trailers**

(15) Single Axle Utility Trailers Tilt or Ramp Gate  
Starting At \$595.

(3) Tandem Axle Utility Trailers Ramp Gate 7000# GVW  
Starting At \$1750.

**US Cargo** 16' Tandem Axle, Rear and Side Gate,  
7000# GVW Was \$2,595, Clearance Price \$2,295

**US Cargo** 20' Tandem Axle Rear and Side Ramp  
10,000# GVW Was \$2,995, Clearance Price \$2,595.

**Loader & Equipment Trailers**

**Moritz** 16' Loader Trailers, Torsion Axles, Ramps, 9950#

**Moritz** 18'+4' Equipment Trailer, Deckover, Dovetail & Ramps

**Moritz** 20' Deckover Equipment Trailer, Torsion Axles

**Gooseneck Flatbed Trailers**

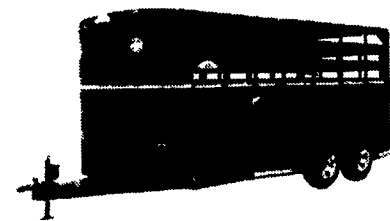
**Moritz** 16'+5' Flatbed, Adj Dovetail, 10,000# GVW,

**Corn Pro** 20'+5' Flatbed, Dovetail, 3 Ramps, 14,000# GVW

**Hydraulic Dump Trailers**

**E Z DUMPER** 6' x 10', 10,000# GVW, Dump Thru Gate

**Hostetler** 8' x 12' Aluminum Deckover Dump 20" Sides,  
26" Front & Rear, Scissor Hoist, 10 or 12000# GVW



**Steel Livestock & Horse Combo Trailers**

**Moritz** 6'x16' Bumper Pull Livestock 7000# GVW

**Corn Pro** 6'x16' Bumper Pull Livestock, 7' High

**Moritz** 2 Horse Slant Load Dressing Room 7' High

**Moritz** 6'8'x16' Bumper Pull Livestock Heavy Axles

**Moritz** 6'8" x 18' Gooseneck, 7' High for Horses

**Eby Aluminum Livestock Trailers**

**Maverick** 6'8" x 16' Bumper Pull, Heavy Axles, 16" Radials

**Maverick LS**, 6'x16" Gooseneck, 10,000# GVW, 16" Radials

**Maverick** 6'8" x 16' Gooseneck, 7000# Axles, 16" Radials

(2) **Maverick** 6'8" x 20' Gooseneck, 7000# Axles, 16" Radials

**Eby Aluminum Horse Combo Trailers**

**Maverick LS** 6'x13' Bumper Pull, 7' High for Horses

**Maverick LS** 6'x16' Bumper Pull, 7' High for Horses

**Used Livestock & Horse Trailers**

**Arnt** 2 Horse, Walk Thru, Rear Ramp

Was \$1550. Clearance Priced \$1150.

**Misc. Used Trailers**

**2 Horse** Walk Thru Trailer Ramp Gate 7' High  
Was \$1550. Clearance Priced \$1,150.

**Premier** 2 Horse Very Good Condition Aluminum Wheels  
New Padding & Matting Ramp

**12' Loader**, 10,000# GVW Ramps Just Inspected  
Very Good Condition

**Cronkite** 16' + 4' Deckover, 12,000# GVW Ramps  
Pinch Hook Electric Brakes

**14' Utility** Trailer Removable Aluminum Sides  
7,000# GVW Electric Brakes

**16' Utility** Trailer 7,000# GVW Electric Brakes  
Ramp Gate