

LEFEVER BROS. CHEVROLET CHEVY TRUCKS GEO.

YOUR DIRECT LINE TO GENUINE GM PARTS

1-800-533-3837

When you call the number listed above, you'll reach our wholesale parts specialists, who can help you keep your GM repair work moving quickly

Ask about

- Specializing in GM Medium Duty Trucks, Current and Obsolete.
- \$500,000 Parts Inventory.
- Parts Locator for Those Hard to Find Items.
- We Ship Anywhere, Local Delivery Available.
- Experienced, Knowledgeable Personnel.

Mon, Tues, Thurs, Fri
7:30 a.m. - 4:30 p.m.
Weds 7:30 a.m. - 8:30 p.m.
Major Credit Cards Accepted

717-432-9697

Quality Dealer Since 1921

406 U.S. Rt. 15 Dillsburg, PA 17019

GM Parts
THE FEELING IS GENUINE



2002 Nissan UD, w/14' Service/Van body w/Roll-up Rear door, Work Benches & Outside Tool Boxes, Auto Trans, PS, 14,000 GVW AM/FM/CD

1994 Nissan UD 1400 with 14' freight body

1989 Ford 400 Diesel 14 ft Dump, 12,000 front axle, 23,000 rear axle, 20,000 lift axle, 53,000 Lb GVW, air brakes, 5+2 trans, 16 1/2 ton carrying capacity

1997 Nissan UD 1800 cab & chassis, diesel, 6 spd/will hold 18' body

1997 International 4700 DT-466, 6 plus trans, 24' freight body

Volvo, white, 85 thru 87 Detroit 320 HP, 9&10 speeds, pusher axle

New 2003 UD Trucks In Stock

Stake Dump, Dry Freight Body

- Call for Details. Leasing & Financing Available.



CENTRAL GARAGE, INC.



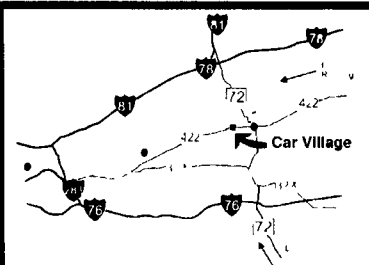
South 2nd St. (Rt. 419) Womelsdorf (Berks Co.) Pa.
610-589-4581 or 800-860-4581

Business Hours:
Mon.-Fri. 9 to 9;
Sat. 9-4

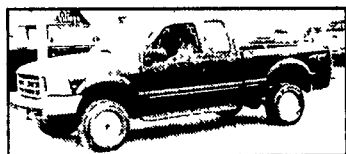
2300 W. CUMBERLAND ST. (Rt. 422)
LEBANON, PA 17042
(Across From Lebanon Valley Mall)

CAR VILLAGE

HEAVY DUTY TRUCKS



PHONE 717-274-2000 Toll Free 1-800-650-1420



TRITON V8
99 FORD F250 SUPER CAB 4x4
Perfect Only 27,000 Miles Loaded XLT AT A/C Alloy wheels
A real good looker



BIG REDNECK
97 FORD F250 SUPER CAB 4x4
Powerstroke Diesel, 5 sp, Custom Exhaust
oversize wheels & Tires



PICTURE PERFECT
99 DODGE 2500 4x4
You Will Like This One Only 28 000 Miles 24 Valve
Cummins Turbo Diesel, Auto, Tow Pkg All Options



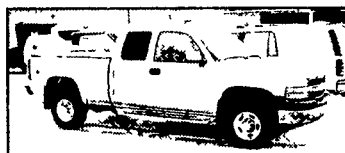
2001 DODGE 2500 CLUB CAB 4x4
24 Valve Cummins Diesel Factory Tow Pkg
Laramie SLT Only 19 000 Miles Remaining New
Tk Warranty



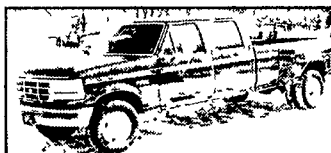
Not Fancy But Nice
99 FORD F250 SUPER CAB 4X4
XL PKG VINYL SEAT & Floor Powerstroke Diesel
Auto A/C ONLY 32 000 Miles



HEAVY CHEVY 2000 CHEVY K3500
CREW DUALY, 4 WHEEL DRIVE
Hey Chevy guys This is the one Only 28,000
Miles High output, 6.5 Turbo diesel, Auto, All
Power Options, Swing Out Mirrors & More



EVERYBODY'S TALKING ABOUT THE DURAMAX DIESEL
01 CHEVY 2500 H.D. SUPERCAB 4x4
Allison Auto, H D Trailer Tow Pkg, Aluminum Wheels &
Plenty More A Very Strong Truck



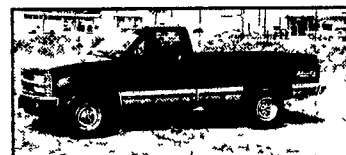
CHEAP CREW CAB DIESEL
93 FORD F350 DUALY
Nice Original Truck 95,000 Actual Miles, Diesel,
5 SP, A/C, Chrome Simulators,
Only \$12,900



POWERHOUSE POWERSTROKE
2000 Ford F350 Crew Cab Dually 4X4
Real Nice Tow Machine, 25,000 Miles,
FORD Warranty, AT, A/C, 6 Way,
Power Driver Seat, Alloy Wheels



POWERSTROKE DIESEL
99 FORD F250 SUPER CAB
4 Wheel Drive
Loaded XLT, All Options, Auto Alloy Wheels
\$24,900



99 CHEVY K2500 4x4
Very Nice Heavy Duty 3/4 Ton Only 46,000 Miles
Remainder New Tk Warranty High Output 6.5
Turbo Diesel, AT, A/C Fact. Tow Pkg Lots Of Tk
For The Money. Only \$19,900



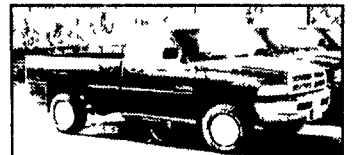
\$2,000
78 DODGE 250 4x4 with Plow
It's not pretty but it does push snow
V-8 Auto



SUPER CLEAN
00 FORD F250 SUPER CAB 4x4
Loaded XLT, Powerstroke Turbo Diesel,
Auto, A/C, 40/20/40 Seat, Run Boards, Alloy
Wheels Ford Warranty A Must See



5 SPD DIESEL • \$22,900
98 GMC K3500 CREW CAB
Single Rear Wheel High Output, 6.5 Turbo Diesel,
5 Spd, A/C, Limited Slip 4 10 Gears, Only 59,000
Miles, Remaining Factory Warranty



\$15,900
95 DODGE 2500 4X4
Cummins Turbo Diesel, Auto, A/C, Tow Pkg Alloy
Wheels, Runs Strong



GSP POWERSTROKE
99 FORD F250 SUPERCAB 4x4
8 Foot Bed, Fact Tow Pkg, Capt Chairs, Console,
Limited Slip Axle, 53,000 Actual Miles



LET'S GO TO WORK
2001 FORD F350 SUPER CAB, DUALY 4X4
XL Pkg Not Fancy Just Nice, Only 20,000 Miles
Powerstroke Turbo Diesel, 5 Sp, A/C, Cloth Bench,
Vinyl Floor



SHORTBED 4 DOOR
99 FORD F250 4x4
39,000 Actual Miles, Very Clean, XLT Lariat Powerstroke
Turbo Diesel, Auto, A/C, Tow Pkg Alloy Wheels, A Real
Good Looker



2001 F-350 CREW CAB
Diesel, 4x4, XLT, 21,000 Miles, Auto
— 2 Available —



4x4 DIESEL SUPER CAB
2000 FORD XLT
It's Perfect Only 52,000 Miles
Powerstroke Turbo Diesel, Auto, A/C, Tow Pkg
Alloy Wheels 40/20/40 Seat

FLATBEDS, WORK & DUMP TRUCKS



DIESEL MOBILE WORKSTATION
99 FORD E-350 HI-TOP CARGO VAN
AT, A/C & Roof A/C, Cabinets, Countertop,
Electric Outlets, Lights, Generator and More
\$17,900



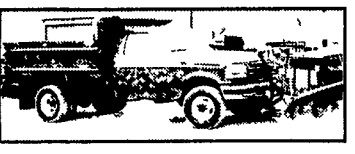
12 Foot Flatbed Dump
2000 Ford 450 Super Duty
Real Nice, 31,000 Miles, Powerstroke Turbo Diesel,
6 Spd, A/C, Tow Pkg



ONLY 8,000 MILES 2001 FORD F350
4x4 Dump Tk A Nice One Auto, Powerstroke
Diesel, A/C, Pintle Hitch/ Heavy 12,500 GVW
Remaining New Tk Warranty



450 SUPER DUTY CREW CAB
2000 FORD, Only 10,000 Miles, Powerstroke Diesel,
Auto, A/C, A Very Nice Tk, 10 Ft Bed



SNOWFLOW & SALT SPREADER
93 FORD F450 SUPER DUTY DUMP TK
Diesel - Auto - Central
Hydraulics, 69,000 Actual Miles \$18,900



4X4 MECHANICS TRUCK
2000 CHEVY 4X4
Very nice, only 30,000 miles, Vortec gas 454
V8, auto, A/C, very strong Truck 11 foot Body.



LANDMASTER DUMP 98 GMC 3500 HD
Utility cabinets on the outside, dump on the
inside, Turbo Diesel Auto, A/C
You can use this one,
Only \$19,900



14 Foot Box
86 FORD E 350
Brand new insp Diesel Power Auto Roll up Rear Door
Only \$5,900



CREW CAB DUMP TK • 2000 FORD 450
Very Nice, Only 10,000 Miles, Powerstroke Turbo
Diesel, Auto, A/C, Alloy Wheels, 3 Yd Dump Body



4x4 CHASSIS
97 FORD F350
Extra Nice, 58,000 Actual Miles, Powerstroke Diesel,
5 Sp, A/C, 161 W B, 84 C A