



FIVE STAR INTERNATIONAL



Used Truck Association Member

Harrisburg

1810 South 19th Street
Harrisburg, PA 17104
800-735-9400 / 717-986-1500
1 Mile South of I-83 at Exit 44b

Reading

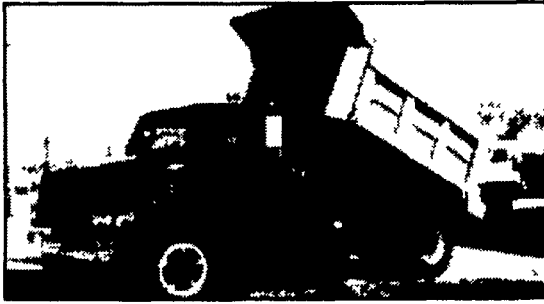
1846 North 5th Street
Reading, PA. 19601
800-438-4744 / 610-374-4914
1/2 Miles South of PA 12

York

2818 West Market Street
York, PA. 17404
888-239-3934 / 717-792-2277
On PA 462 West of York



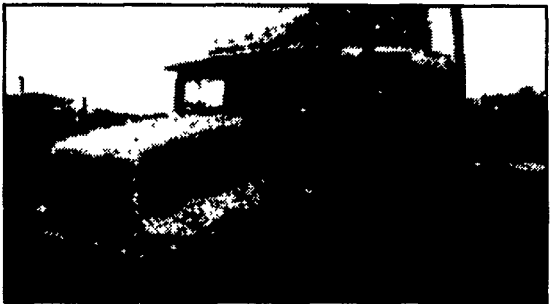
1995 INTERNATIONAL 9400, 3406E CATERPILLAR 435 HP, 10 SPD OD, ENGINE BRAKE, AIR RIDE SUSPENSION, 234" WB, 72" HI RISE PRO SLEEPER, 24.5 TIRES, ALL ALUMINUM WHEELS, TANDEM AXLE, GREEN, STK #15393,\$16,500



1997 INTERNATIONAL 4900, DT-466 INTERNATIONAL 210 HP, 5+2 SPD, SPRING SUSPENSION, 4.89 RATIO, 152" WB, 22.5 TIRES, SPOKE WHEELS, SINGLE AXLE, RED/SILVER, NEW 10' BEAU-ROC BODY, STK #84874,\$27,500



1992 FREIGHTLINER FLD11264, CATERPILLAR 325 HP, 9 SPD, AIR RIDE SUSPENSION, 48" SLEEPER CAB, 22.5LP TIRES, ALUMINUM/STEEL WHEELS, TANDEM AXLE, WHITE, STK #15195,\$4,500



1994 INTERNATIONAL 9200 EAGLE, CUMMINS 350 HP, 9 SPD OD, AIR RIDE SUSPENSION, 48" FLAT TOP SLEEPER, 24.5 TIRES, ALUMINUM/STEEL WHEELS, TANDEM AXLE, WHITE, STK #85996,\$7,500



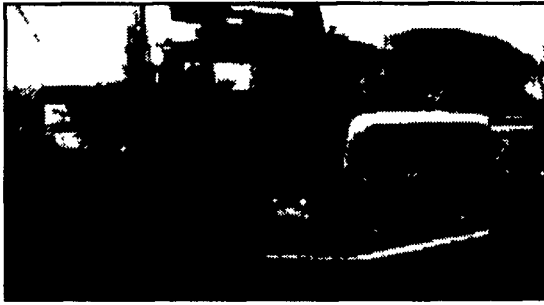
1986 INTERNATIONAL 9300, CUMMINS 300 HP, 9 SPD, ENGINE BRAKE, SPRING SUSPENSION, 199" WB, 42" FLAT TOP SLEEPER, 22.5 TIRES, ALL STEEL WHEELS, TANDEM AXLE, GREEN, STK #13796,\$4,750



1991 INTERNATIONAL 9400 EAGLE, SERIES 60 DETROIT 425 HP, 9 SPD OD, ENGINE BRAKE, AIR RIDE SUSPENSION, 42" FLAT TOP SLEEPER, 22.5 TIRES, ALL ALUMINUM WHEELS, TANDEM AXLE, BLUE, STK #58632,\$9,500



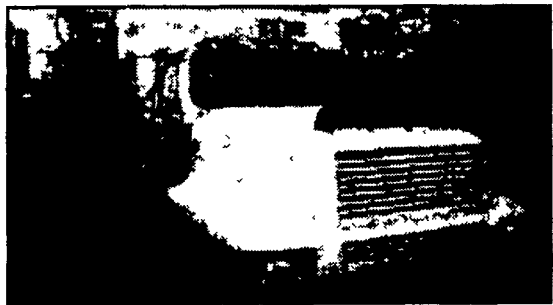
1991 WHITE/GMC WIA64T, CATERPILLAR, 13 SPD OD, 42" FLAT TOP SLEEPER, 22.5 TIRES, ALL STEEL WHEELS, TANDEM AXLE, BLUE, STK #30503, \$6,500



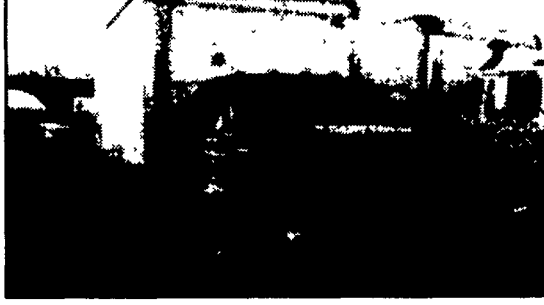
1994 FORD L9000, N14 CUMMINS 460 HP, 9 SPD, 4 SPRING SUSPENSION, 22.5 TIRES, ALL STEEL WHEELS, TANDEM AXLE, BLUE, STK #32504, \$9,950



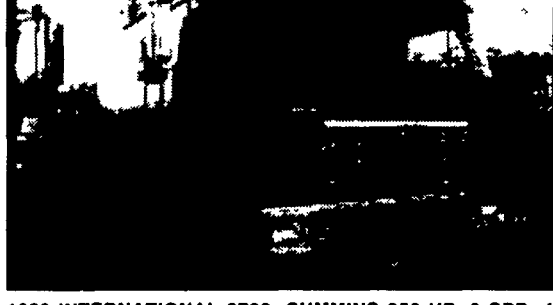
1995 INTERNATIONAL 4900, DT-466 INTERNATIONAL 250 HP, 6 SPD, 22' X 96" X 12', SPRING SUSPENSION, 22.5 TIRES, BUDD WHEELS, SINGLE AXLE, ROLL UP DOOR, BLUE, STK #57067, \$17,500



1991 INTERNATIONAL 8200, CATERPILLAR 325 HP, 9 SPD OD, ENGINE BRAKE, AIR RIDE SUSPENSION, 22.5 TIRES, ALL STEEL WHEELS, TANDEM AXLE, WHITE, STK #81786, \$6,500



1996 FORD F800, CUMMINS 190 HP, 16' X 96" X 12'6", SPRING SUSPENSION, SINGLE AXLE, SWING DOOR, BLUE, STK #20510,\$14,500



1989 INTERNATIONAL 9700, CUMMINS 350 HP, 9 SPD, 4 SPRING SUSPENSION, 89" FLAT TOP SLEEPER, 22.5 TIRES, ALUMINUM/STEEL WHEELS, TANDEM AXLE, BLUE, STK #79990,\$3,500



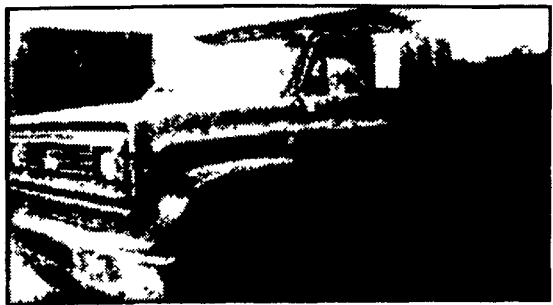
1983 INTERNATIONAL 2554, DT-466 INTERNATIONAL 210 HP, AUTO, SPRING SUSPENSION, 22.5 TIRES, SPOKE WHEELS, SINGLE AXLE, WHITE, STK #26953, \$7,500



1994 UD 2600, NISSAN, 6 SPD, 20' X 96" , 22.5 TIRES, ALL STEEL WHEELS, SINGLE AXLE, ROLL UP DOOR, WHITE, STK #75278,\$9,950



1991 MACK MS250, MACK, 6 SPD, 22' X 96" , SPRING SUSPENSION, 22.5 TIRES, ALL STEEL WHEELS, SINGLE AXLE, ROLL UP DOOR, WHITE, STK #00684,\$5,500



1985 CHEVROLET 70, GAS CHEVY, SPOKE WHEELS, SINGLE AXLE, GOLD, STK #00012, \$3,500



1986 FORD F350, 6.9L DIESEL INTERNATIONAL 155 HP, AUTO, 14' X 96" , 16 TIRES, ALL STEEL WHEELS, ROLL UP DOOR, WHITE, STK #00159,\$2,500



1988 GMC 2500, CHEVY, AUTO, 15' X 96" , SPRING SUSPENSION, 16 TIRES, ALL STEEL WHEELS, SINGLE AXLE, ROLL UP DOOR, GREY, STK #03171,\$1,500



www.fivestarintl.com

