

1A CONSTRUCTION EQUIPMENT

Cat 930 wheel loader 1976, 2.25 yd bucket, forks, 10' snow plow, tire chains & extra tires. Rebuilt brakes, new seat. Privately owned. \$19,800/obo 610-756-3402

1987 JCB 525 shooting boom forklift, 4wd, \$10,500. '88 JCB 530 DHL, 4wd, shooting boom forklift, \$13,500. '96 Bobcat 853H skid loader, cab, new tires, new bkt, \$9,500. (2) Bobcat 843 skid steers, 1 runs, 1 needs work \$8,200/both. 410-593-9866 All Lanco PA

Jonestown Ag Repair & Supply Store

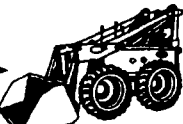
170 Old Rt 22 Jonestown, PA 17038

Darvin Weaver

717-865-0135 fax 717-865-0233



Large selection of Interstate Batteries



Mystik Luricants * Roller chains
* Custom made hydraulic hoses
* Napa Belts & Filters
* Hardware Skid loader attachments available
* Galaxy Skid loader ties & other brands

Complete Skid Loader Repairs Our Specialty

Our store replaces Skirksville Farm Supply

We have the right Manitou for you!

Contractors check out Burkholder's Hylifts for your construction handling needs.

Burkholder Hylifts Sales & Rental

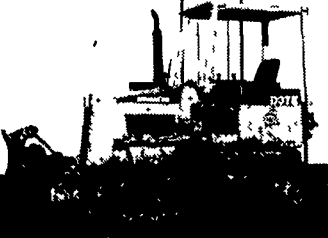
580 Indiantown Rd. Ephrata, PA 17522

717-738-1752 717-278-5843

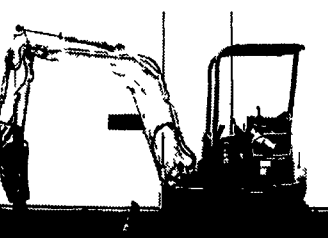
New Location 4 Miles East Of Myerstown On Rt. 422



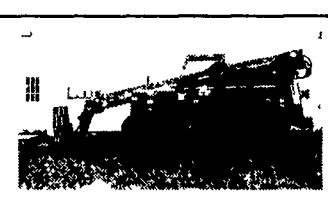
89 Cat 225B LC, 7670 Hrs, 10' 11" Wide, 60,000 lbs. Exc Cond \$27,500



93 Komatsu D37E, 2800 Hrs 50% UC \$22,500



2000 Kobelco SK35, Canopy, 1100 Hrs Steel Tracks Plumbed w/Hammer Call

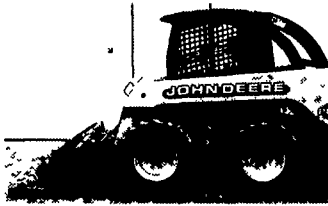


97 Traverse 8040, Good Tires, 8000 lb Lift, 32' Reach \$32,000

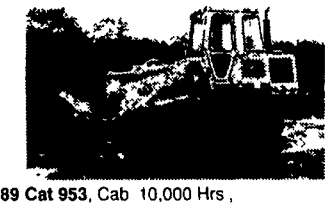
Available 99 Tramac 1000 lb Hammer \$4,500

Ford 655A Backhoe, OROPS 2WD \$8,900

JCB 3x Backhoe, OROPS 2WD, needs engine work \$3,500

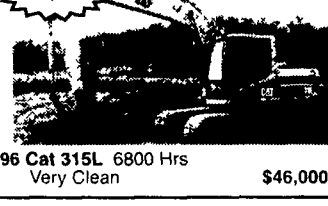


(2) 2000 JD 250, 1500 Hrs, New Tires \$12,500



89 Cat 953, Cab 10,000 Hrs, 50% UC \$35,000

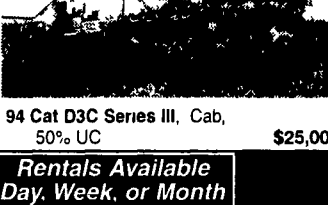
94 Cat 953B Cab New UC 8200 Hrs \$65,000



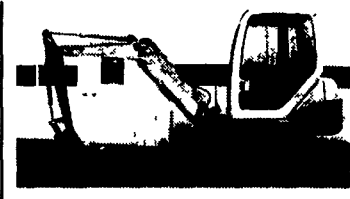
96 Cat 315L 6800 Hrs Very Clean \$46,000



2000 Hitachi EX200-5, 2900 Hrs \$69,000



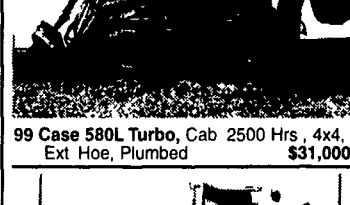
94 Cat D3C Series III, Cab, 50% UC \$25,000



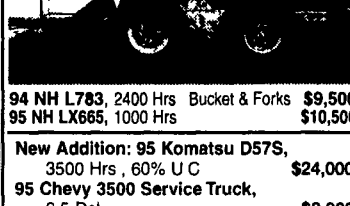
95 Komatsu PC30, Cab, 4500 Hrs, Rubber Tracks, w/Blade \$14,000

94 Komatsu PC25 3100 Hrs \$12,500

95 Komatsu PC20, 2300 Hrs \$10,500



99 Case 580L Turbo, Cab 2500 Hrs, 4x4, Ext. Hoe, Plumbed \$31,000



94 NH L783, 2400 Hrs Bucket & Forks \$9,500

95 NH LX665, 1000 Hrs \$10,500

New Addition: 95 Komatsu D57S, 3500 Hrs, 60% UC \$24,000

95 Chevy 3500 Service Truck, 6.5 Dsl \$8,900

88 Ford F350 Dually, Mechanics Body, Crane Electric Lift Gate New Motor New Tires \$6,900

Kubota L2650 4x4 Loader, 2900 Hrs \$8,900

90 Hitachi EX150, 7500 Hrs, Plumbed \$22,500

87 JD 790D, New Paint, 11'2" Wide, 52,000 lbs \$24,000

Too Ugly to Picture

1995 Komatsu PC 200, 16,000 Hrs Grapple \$18,500



Rent \$125/Day \$500/week

96 Komatsu PC40FR, 3200 Hrs \$14,500

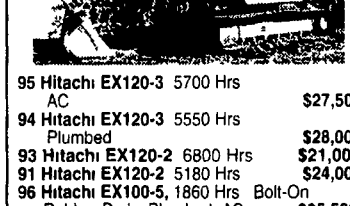
97 Komatsu PC40FR, 2950 Hrs \$15,000

96 Komatsu PC40, 3200 Hrs, \$14,500

95 Komatsu PC40, 3660 Hrs, 6-Way Blade \$13,500

94 Komatsu PC40, 3150 Hrs, \$12,500

90 Komatsu PC40, 3,580 Hrs \$12,000

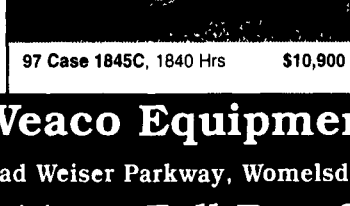


86 Linkbelt 2650 \$13,900

(2) 963 (2) 953 (1) 955L (1) 951

87 Cat 963 Cab 4-in-1 Bucket 90% Cat UC \$39,000

87 Cat 963 Open ROPS, New Tracks \$32,000



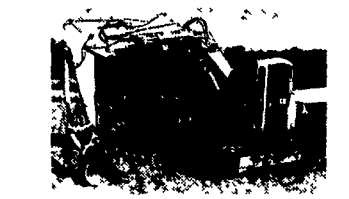
95 Hitachi EX120-3 5700 Hrs AC \$27,500

94 Hitachi EX120-3 5550 Hrs Plumbed \$28,000

93 Hitachi EX120-2 6800 Hrs \$21,000

91 Hitachi EX120-2 5180 Hrs \$24,000

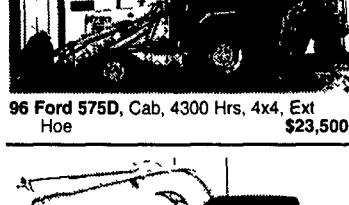
96 Hitachi EX100-5, 1860 Hrs Bolt-On Rubber Pads Plumbed AC, \$35,500



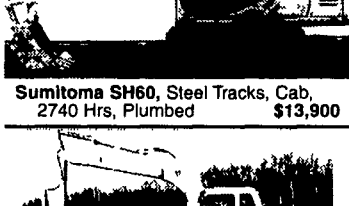
92 Cat 307SSR, Cab, 4850 Hrs, Rubber Tracks, w/Blade \$17,500

94 Komatsu PC75UU, 4971 Hrs, Rubber Tracks, Blade, 4900 Hrs \$19,000

94 Komatsu PC75UU, 4900 Hrs, \$19,500



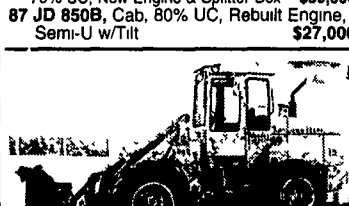
96 Ford 575D, Cab, 4300 Hrs, 4x4, Ext. Hoe \$23,500



Sumitomo SH60, Steel Tracks, Cab, 2740 Hrs, Plumbed \$13,900

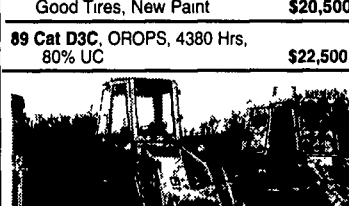


96 Kobelco SK150LC, 6900 Hrs, 8'6" wide, Good UC \$36,000



92 JD 850B, Cab w/Air, 6001 Original Hrs, 70% UC, New Engine & Splitter Box \$39,000

87 JD 850B, Cab, 80% UC, Rebuilt Engine, Semi-U w/Tilt \$27,000

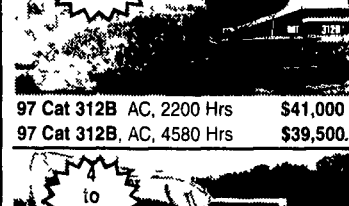


84 JD 544C, Cab, 6480 Hrs, Quick Coupler \$17,000

83 JD 544C, Cab, 4665 Hrs, Good Tires, Quick Coupler \$17,000

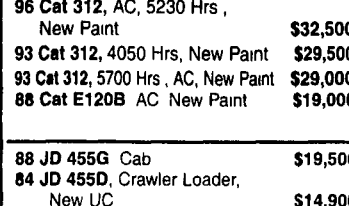
86 JD 544D, Cab, 6990 Hrs, Good Tires, New Paint \$20,500

89 Cat D3C, OROPS, 4380 Hrs, 80% UC \$22,500



73 Cat 930, Cab, Good Tires \$18,500

84 Cat 910 Good Tires 6000 Hrs \$15,500



2 to Choose

97 Cat 312B AC, 2200 Hrs \$41,000

97 Cat 312B, AC, 4580 Hrs \$39,500.



to Choose

96 Cat 312, AC, 5230 Hrs, New Paint \$32,500

93 Cat 312, 4050 Hrs, New Paint \$29,500

93 Cat 312, 5700 Hrs, AC, New Paint \$29,000

88 Cat E120B AC New Paint \$19,000

88 JD 455G Cab \$19,500

84 JD 455D, Crawler Loader, New UC \$14,900

Cat 977L Good UC \$15,000

79 Cat 955L, 13X Series \$19,500

Cat 951B Very Good UC, No Rops \$9,500

85 Cat 224 Mobile Excavator, Clean, 3rd Valve \$12,500

95 Mec 1948HT Electric Manlift \$2,900

WENGER'S OF MYERSTOWN
CONSTRUCTION EQUIPMENT & PARTS

800-552-5080 • Nights 717-272-9583
Rt. 501 South Myerstown, PA 17067
HOURS: Mon-Fri • 7:30-5:00 Saturday • 7:30-Noon
www.wengers.com kbaum@wengers.com

Case 580L, 1800 Hrs, 4x4, STD. Stick, \$32,500

I.R. SD 40D Drum Drive \$30,000

Weaco Equipment Financing and Lease Purchase Available No Sunday Calls

4009 Conrad Weiser Parkway, Womelsdorf, PA 19567

610/589-5555 Toll Free 877/529-9328