

Westminster Livestock
Hagerstown, Md.

Report Supplied By Auction
Tuesday, January 21, 2003
129 HEAD, 2.00 HIGHER. BREAKERS 38.00-44.00, BONERS 36.00-41.00, LEAN 33.00-37.00, THIN 33.00 DOWN.
BULLS: 7 HEAD, 1.00 HIGHER. YG+N1 1800-2050 LBS. 54.75-56.75, YG+N2 1200-1600 LBS. 44.00-46.00.

FED STEERS: 25 HEAD, STEADY PRICES. HIGH CHOICE 1200-1400 LBS. 78.00-80.50, CHOICE 2-4 74.00-78.00, LOW CHOICE 1100-1400 LBS. 71.00-74.00, CHOICE HOLSTEINS 1300-1500 LBS. 64.00-65.75, LOW CHOICE TO 60.25.

FED HEIFERS: 12 HEAD. HIGH CHOICE TO PRIME 1200-1400 LBS. 79.00-80.50, CHOICE 2-3 74.00-77.00, 1 1080 LBS. AT 76.00.

CALVES: 97 HEAD, 1 CHOICE 192 LBS. AT 89.00, GOOD 80-110 LBS. 35.00-45.00; HOLSTEIN BULLS RETURNING TO FARM 5.00-10.00 HIGHER. +N1 95-120 LBS. 120.00-132.00, 86-94 LBS. 90.00-117.00; +N2 95-120 LBS. 70.00-115.00, 82-94 LBS. 60.00-90.00; HOLSTEIN HEIFERS +N1 80-110 LBS. 340.00-400.00, 120-135 LBS. 280.00-300.00; +N2 80-100 LBS. 190.00-300.00.

BUTCHER HOGS: 46 HEAD, STEADY. YG+N1 AND 2 210-300 LBS. 33.00-34.75, +N1 300-360 LBS. 27.00-30.00, +N2 AND 3 200-250 LBS. 25.00-29.00.

SOWS: 16 HEAD, 300-500 LBS. 18.00-24.00, 500-700 LBS. 20.00-24.00.

BOARS: 7 HEAD 5.00-6.50.

STOCK CATTLE: 132 HEAD. STEERS MED. AND LARGE FRAME 300-400 LBS. TO 92.00, 600-800 LBS. 67.00-76.00, 900-1000 LBS. 62.00-68.00.

HEIFERS: MED. AND LARGE FRAME 300-500 LBS. 64.00-75.00, 500-700 LBS. 58.00-67.00.

BULLS: MED. AND LARGE FRAME 200-400 LBS. 83.00-94.00, 400-500 LBS. 75.00-89.00, 500-600 LBS. 69.00-77.00, 600-700 LBS. TO 65.00.

SHEEP: 19 HEAD 35.00-53.00, HEAVYWEIGHTS 25.00-37.00.

LAMBS: 37 HEAD, 3.00-8.00 HIGHER. HIGH CHOICE TO PRIME 90-120 LBS. 98.00-107.00, 121-135 LBS. 98.00-100.00, 136-150 LBS. 80.00-88.00, 80-90 LBS. 110.00-120.00.

GOATS: 62 HEAD. LARGE BILLIES 85.00-125.00, MEDIUM 50.00-75.00, NANNIES 45.00-70.00.

PIGS AND SHOATS: 31 HEAD, BY THE LB. 25-40 LBS. 20.00-41.00, 1 160 LB. AT 35.00.

Four States Livestock
Monday Sale

Hagerstown, Md.
Report Supplied By Auction
Monday, January 20, 2003
SLAUGHTER COWS: 65 HEAD, STEADY TO 2.00 HIGHER MAINLY ON FLESHY TYPES. BREAKERS 39.00-45.25, BONERS 37.00-41.25, LEAN 32.00-37.00, THIN AND LIGHT 32.00 DOWN.
BULLS: YG+N2 1100-1400 LBS. TO 44.25.

FED STEERS: NO BEEF BREEDS. 1 CHOICE HOLSTEIN 1800-1900 LBS. 53.75-54.25, 1 AT 57.00, 1 2078 LBS. AT 50.50, SELECT 1300-1500 LBS. 50.25-54.25, 1 SELECT 1150 LBS. AT 67.50, CHOICE HOLSTEINS 1300-1550 LBS. 56.00-62.00.

CALVES: 115 HEAD. HIGH CHOICE 200 LBS. 84.00-90.00, GOOD 80-110 LBS. 35.00-45.00, 70-80 LBS. TO 33.00; HOLSTEIN BULLS RETURNING TO FARM, STEADY PRICES. +N1 95-120 LBS. 120.00-135.00, 88-94 LBS. 80.00-110.00; +N2 95-120 LBS. 85.00-120.00, 84-94 LBS. 50.00-75.00; HOLSTEIN HEIFERS +N1 100-115 LBS. 350.00-450.00, +N2 80-110 LBS. 200.00-300.00, 70-80 LBS. 120.00-155.00; BEEF X BULLS 1 100 LBS. AT 132.00, BEEF X HEIFER 95 LBS. AT 87.50.

SOWS: 1 786 LBS. AT 26.50.
STOCK CATTLE: 27 HEAD, NO LIGHTWEIGHTS. STEERS 700-800 LBS. TO 61.50.

HEIFERS: 700-800 LBS. 54.00-58.00.
BULLS: 500-600 LBS. 55.00-65.00, 1 775 LBS. AT 49.00.

Four States Livestock
Wednesday Sale

Hagerstown, Md.
Report Supplied By Auction
Wed., Jan. 22, 2003
SLAUGHTER COWS: 89 HEAD, ACTIVE 2.00-4.00 HIGHER. BREAKERS 39.00-43.50, BONERS 37.00-42.00, LEAN 34.00-38.50, THIN AND LIGHT 34.00 DOWN.

BULLS: 7 HEAD, 2.00 HIGHER. YG+N1 49.00-54.25, YG+N2 44.00-48.00.
FED STEERS: 26 HEAD, BETTER QUALITY 1.00 HIGHER. HIGH CHOICE 2-3 1300-1575 LBS. 74.50-78.00, PRIME 79.00-80.00, LOW CHOICE 1100-1459 LBS. 71.50-74.00.

FED HEIFERS: 21 HEAD, 1.50 HIGHER. HIGH CHOICE TO PRIME 1150-1500 LBS. 77.00-81.25, 1525-1650 LBS. 70.00-72.75, CHOICE 2-3 1100-1300 LBS. 71.00-77.00, LOW CHOICE 1000-1100 LBS. TO 66.25.

CALVES: 138 HEAD, GOOD SLAUGHTER. 85-110 LBS. 35.00-45.00, 70-85 LBS. 25.00-35.00; HOLSTEIN BULLS RETURNING TO FARM 5.00-15.00 HIGHER. +N1 95-125 LBS. 130.00-155.00, 86-94 LBS. 90.00-122.00; +N2 95-125 LBS. 90.00-127.00, 80-94 LBS. 50.00-85.00; HOLSTEIN HEIFERS NO +N1'S. +N2 80-100 LBS. 200.00-325.00, BEEF X BULLS 70.00-110.00, 1 100 LBS. AT 140.00.

BUTCHER HOGS: 12 HEAD, GOOD DEMAND. +N1 AND 3 240-265 LBS. 33.00-36.00, 270-350 LBS. 35.00-44.00.

SOWS: 8 HEAD. 375-575 LBS. 28.00-29.50, CULLS 500-650 LBS. 15.00-21.00.

STOCK CATTLE: LIGHT RUN; QUALITY POOR. STEERS 1000-1075 LBS. TO 62.50.

HEIFERS: 300-500 LBS. 55.00-62.00.
BULLS: 200-400 LBS. 69.00-75.00, 500-700 LBS. 50.00-57.00.

DAIRY REPLACEMENTS: 25 HEAD. LARGE SPRINGERS TO 1350.00, MEDIUM TO 725.00.

DAIRY HERD DISPERSAL 58 HEAD. RECENTLY FRESH HOLSTEINS 1000.00-1285.00, JERSEYS 700.00-975.00, OLDER HOLSTEINS 700.00-950.00, DRY COWS 450.00-900.00.

GOATS: LARGE 71.00-93.00, MEDIUM 40.00-44.00, SMALL 21.00 DOWN.

PIGS AND SHOATS: 36 HEAD, BY THE HEAD, 50-60 LBS. 17.00-23.00, 65-75 LBS. 23.00-31.00, 85 LBS. 39.50; BY THE LB. STOCK BOARS 270-400 LBS. 15.00-18.00.

Friend's Stockyard
Accident, Md.

Report Supplied by Auction
Monday, January 20, 2003
STOCK STEERS AND BULLS: 200-500 lbs. 55.00-87.00.
STOCK HEIFERS: 200-500 lbs. 51.00-72.50.
SLAUGHTER STEERS: Good to Choice 68.00-77.00, medium to good 66.00-67.50, heavy Choice over 1450 lbs. 55.00-65.00.
HOLSTEIN STEERS: heavy Choice 56.00-65.00, light 39.00-58.00.

SLAUGHTER HEIFERS: Good to Choice 69.50-77.00, Medium to Good 60.00-68.50.
BULLS: heavy 40.00-48.50, light 40.00-56.00.

COWS: Utility (Holsteins) 37.00-42.50, Commercial to Good 31.00-36.50, cull cows 33.00 and down.

VEALS: Good to Choice 50.00-75.00, Med. to Good 50.00-67.00.

BOB CALVES: 40.00 and down.
HOLSTEIN BULL CALVES, RETURN TO FARM: 90-120 lbs. up to 120.00; HOLSTEIN HEIFER CALVES, RETURN TO FARM: 90-120 lbs. up to 355.00, BEEF X CALVES return to farm up to 110.00.

HOGS: top quality, up to 37.50.
SOWS: up to 22.00.

LAMBS, Choice up to 88.00.
GOATS: Choice up to 65.00.

Livestock prices are all given per hundred weights.

Livestock Cooperative
Auction Market Of
North Jersey

Hackettstown, N.J.
Report Supplied by Auction
Tuesday, January 21, 2003
CALVES .03-2.80.
COWS .25-46%.
EASY COWS .17½-36%.
FEEDERS 300-600 LBS. .22-.75.
HEIFERS .31½-.67.

BULLS .38-.60.
STEERS .37-.70.
HOGS .31-.32½.
ROASTING PIGS EACH 25.00.
BOARS, NONE.
SOWS, NONE.
SHEEP .36-.70.
LAMBS EA. 25.00-73.00.
LAMBS PER LB. .79-1.41.
GOATS EA. 23.00-150.00.
KIDS EA. 24.00-59.00.
HIDES EA. 4.50-31.00.
TOTAL: 428.

LIVESTOCK FUTURES MARKET

Chicago Mercantile Exchange
Wednesday, January 22, 2003

	Choice Steers Today	Choice Steers Wk Ago	Choice Feeders Today	Choice Feeders Wk Ago	Live Hogs Lean Value Today	Live Hogs Lean Value Wk Ago	Frozen Pork Bellies Today	Frozen Pork Bellies Wk Ago
J 02	-----	-----	80.475	80.525	-----	-----	-----	-----
F 03	80.450	79.350	-----	-----	50.475	51.125	80.200	82.125
Mr 03	-----	-----	79.500	78.225	-----	-----	80.175	81.700
Ap 03	78.550	77.725	79.500	78.350	56.600	57.300	-----	-----
My 03	-----	-----	80.000	78.875	61.950	61.975	80.850	82.950
Jn 03	70.975	69.700	-----	-----	63.750	63.100	-----	-----
Jl 03	-----	-----	-----	-----	61.350	61.450	82.250	83.800
Au 03	68.625	67.425	83.100	81.725	58.650	57.825	79.250	81.500
S 03	-----	-----	83.100	81.700	-----	-----	-----	-----
O 03	71.050	70.000	82.950	81.600	52.300	52.150	-----	-----
N 03	-----	-----	82.900	82.000	-----	-----	-----	-----
D 03	72.175	71.400	-----	-----	51.125	51.100	-----	-----
F 04	73.650	72.800	-----	-----	53.825	53.700	-----	-----

You Are Invited To Our Annual



ELIZABETHTOWN

MONDAY, JAN. 27 - SATURDAY, FEB. 1, 2003

See Sec. A Page 25 For Schedule Of Events

187 Merts Drive
Rte. 283, Rheems Exit
Elizabethtown, PA 17022
(717) 367-1319 or (800) 222-3373



NEW HOLLAND

MESSICK'S

www.messicks.com

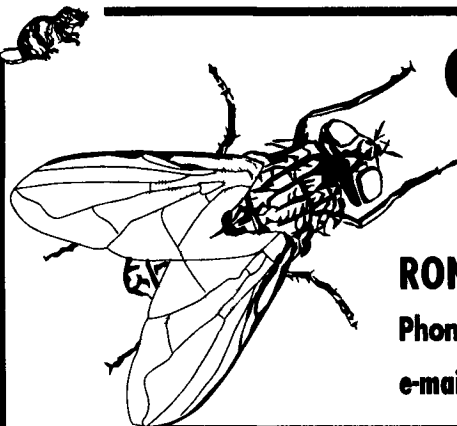


C&M Farm Services Inc.

Elizabethtown • Pennsylvania

"Unique Farm Services"

RONI CLARK • Licensed & Insured
Phone: 717•361•6065 • Fax: 717•361•0867
e-mail: roni.clark@prodigy.net



We offer the following services for the most complete pest control possible. Whether your need is to control pests, eliminate harmful bacteria, or encourage beneficial insects, we have the tools to help you.

• Fungus (kills adult flies)

• Fumigation

• Fogging for common flies and destructive beetles

• Wet Disinfect

• Bird control

• Rodent control (PEQAP Trained)

• Hister Beetle trapping

• Supplies for the "Do-it-yourselfer"

• Fly parasites and Hister Beetles

• Consultation



NEED MORE FARM INCOME?

Contract Finishing Offers An Excellent Return On Investment



Benefit from the advantages of a NEW AUTO-SORT WEAN TO FINISH BARN

- Turnkey package (building, equipment & production contract).
- Unique barn size.
- Only empty & fill barn every 6 months.
- Steady monthly income.
- Minimal labor requirements.
- Weaned pigs from our own sow units.
- Weekly service visits to help maximize production.
- Within 70 mile radius of Mount Joy, PA.

For more details contact
Brent @ 800-544-4574

HERSHEY AG



Esbenshade Mills