

FSA Advises DCP Deadline Approaching

POTTSVILLE (Schuylkill Co.) — Do you believe we are in 2003 already? Have you made your decisions concerning the New Farm Bill? Have you visited the Farm Service Agency (FSA) to start the enrolling process? Are you aware that this legislation affects farm program benefits through 2007? Did you know FSA is issuing advance payments for 2003 to enrolled producers? Did you know that your farm might be eligible for benefits for 2002 as soon as you enroll?

Good management is required to be a successful farmer under the conditions we are facing in agriculture today. The princi-

pals of management say we need to look at all the tools available to assure success. If you haven't started the process to enroll in the Direct and Counter Cyclical Payment Program you may be overlooking a very important tool.

April 1st is the first important deadline in the program. FSA encourages all farmers to visit the office for a program review prior to this deadline. In many cases growers will need to make more than one visit prior to the deadline. April is fast approaching and the time to get busy in the fields will be here before you know it. Take steps now to assure 2003 will be a successful year, visit FSA today.

BUY, SELL, TRADE OR RENT THROUGH THE

CLASSIFIED ADS

PHONE: 717-626-1164 or 717-394-3047
FAX 717-733-6058

Mon., Tues., Wed., Fri. 8 AM to 5 PM; Thurs. 7 AM to 5 PM

1A CONSTRUCTION EQUIPMENT



\$15,500

Call Scott Bond
325 County Rd 579, Ringoes, N J
908-782-7658

Ford A-62 wheel loader, 4,000 hrs., never used in salt, excellent cond.



1993 IR Air Compressor, 250 CFM JD Diesel, Excellent Condition, Kept indoors, \$6,850.
717/367-4830



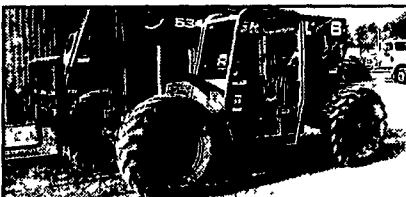
CAT 613 Elevating Scraper
Excellent Condition \$15,000 OBO
717/648-3654 (Day)
717/502-0347 (Eve.)

1A CONSTRUCTION EQUIPMENT



1989 PC150 - III with thumb
Very good condition,
\$25,000
610-856-7740

REACH FORKLIFTS



1997 GEHL 553, 6K, 2600/HRS \$28,000
1998 LULL 644-42, 6K, 1900/HRS \$40,000
1999 LULL 644-34, 6K, 1000/HRS \$42,000

OTHERS AVAILABLE
GRADALL, LULL, SKYTRAK, GEHL
717-629-6194

BACKHOES



1999 CASE 580L, 4x4, CAB, EXTENDAHOE, 1800/HRS \$32,000
1999 CASE 580SL, 4x4, CAB, EXTENDAHOE, 2700/HRS \$35,000
1999 JD 310E, 4x4, CAB, EXTENDAHOE, 2200/HRS \$32,000

MANY OTHERS TO CHOOSE FROM
717-629-6194



\$22,450

1996 Case 586E, 4x4, forklift, 6000 lb. 21 ft. lift, see thru mast, side shift, 2787 hrs, ex. cond.

856-769-0787

PA TRACK & WELDING

*** JD-350/450/550 OWNERS ***
Prices good thru 1/31/03

JD-450/550 36 link dozer tracks assembled w/16" pads \$1125/side
JD-450/550 37 link loader tracks assembled w/14" 3 bar pads \$1175/side
Sprockets for JD-350/bk \$140 each
Sprockets for JD-450/555/550" \$140 each
Bottom rollers for JD-350/B \$97 each
Bottom rollers for JD-450/550 \$99 each

- ALL NEW PARTS -

- 1 year/1500 hr warranty -

Call 1-888-387-2510
or
(814) 383-2510

- #8714 Case 580K Loader Backhoe, 1989, 4 WD, Cab, Ex, 5350 Hrs \$19,900
- #8726 Case 580K Loader Backhoe, 1991, 4 WD, Ex, 2975 Hrs \$24,900
- #8719 Case 580SE Loader Backhoe, 1986, 2 WD, Can, Std \$10,900
- #8729 Case 580SL Loader Backhoe, 1995, 2 WD, Cab, Ex, 2500 Hrs \$34,900
- #8724 Case 1840 Unloader, 1995, Aux Hyd, Drt Bkt, 1500 Hrs \$11,500
- #8576 Case 580K Loader Backhoe, 1987, 2wd, can, 6437 hrs \$12,900
- #8319 Case 580SK Loader Backhoe, 1991, 2wd, cab std \$16,900
- #8570 Case 580SL Loader Backhoe 1998, 4wd, cab a/c, stereo ex, 3500 hrs \$36,900
- #8484 Case 580SE Loader Backhoe, 1986, 4WD Cab, Ext Hoe \$17,900
- #8494 Case 90XT Unloader 2001, Hyd Cplr, Aux Hyd, 855 Hrs \$25,900
- #8447 Case 580SL Loader Backhoe, 1999, 4WD, Cab, Ext Hoe, 1850 Hrs \$42,900
- #8276 Case 850E Dozer, 1993 Bottom 80-85%, 4700 Hrs \$36,900
- #8279 Case 580SL Loader Backhoe, 1995, 4WD, Cab, Ex, 2500 Hrs \$34,900
- #8110 AC 840 Wheel Loader 1973, 1 1/2 Cu Yd Bkt \$11,900
- #7975 Case 580SL Loader Backhoe 1997, 4WD Cab, Ext AC, 2612 Hrs \$37,900
- #7923 New Holland LX885 Skidloader 1997 cab good tires, tracks 2500 Hrs \$15,900
- #7491 Case 1840 Unloader 1998 Aux Hyd Drt Bkt, 1212 hrs \$14,500
- #7870 Case 570LXT Tractor/Loader 1996 4 WD, Canopy 3 Point Hitch, Filled Tires 500 Hrs \$24,900

Vernon E. Stup Co.
5859 Urbana Pike, Frederick, MD 21701
301/663-3185

Mid Maryland Rentals, Inc.

8865 Baltimore National Pike
P.O. Box 186 Middletown, MD 21769

Phone: (301) 371-5500
Fax: (301) 371-9299

www.midmd.com
midmdal@fred.net

Financing Available



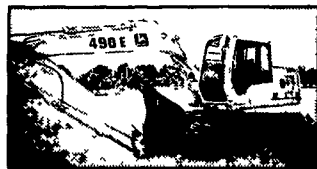
1994 Cat 953B, cab, GP bucket w/teeth, new undercarriage, fresh paint, work ready, \$67,500



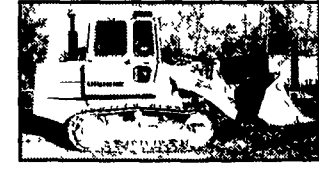
2000 ASV 2810, GP bucket, auxiliary hydraulics, 83HP Isuzu turbo diesel, low hours, work ready, \$22,000



1989 Komatsu D66S, cab, gp bucket w/teeth, recent paint, new tracks, work ready, \$28,500



1996 John Deere 490E, 24" bucket, 3,700 hrs, VG U/C & condition, work ready, \$37,500



1986 Liebherr 621B, cab, 4 in 1 bucket w/teeth, recent paint, 50% undercarriage, 5,400 original hours, work ready, \$26,500



1995 Cat 963B, cab rebuilt engine, gp bucket w/teeth, recent paint, 50% undercarriage, work ready \$68,500

- 1981 Case 850C, crops/sweeps 6 way blade, v g undercarriage & condition \$17,500
- 1980 Dresser 125E crawler loader, crops, 1 4 cu yard gp bucket w/teeth v g undercarriage & cond work ready \$15,250
- 1987 Ford 555 cab, 2 wheel drive, standard hoe, 24" bucket v g tires & condition work ready \$10,500
- 1988 JCB 1400B cab, 2 wheel drive standard hoe, 18" bucket, fresh paint v g tires work ready \$10,900
- 1994 Komatsu PC120LC6, 36" bucket, long stick VG U/C & condition work ready \$36,900
- 1996 Rammax RW14D3-FMR 33 padfoot trench roller v g cond work ready \$6,500
- 2000 Scattrak 1300 D skid steer, gp bucket aux hyd 119 hrs exc cond \$13,000
- Shooting boom forklifts JCB Gehl, Gradall, Lull, 6,000-8 000 lbs, all work ready from \$16,500

Lancaster Farming
Antiques Center

See pages B19-B22