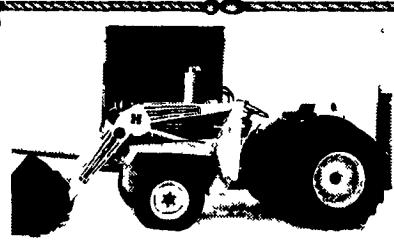
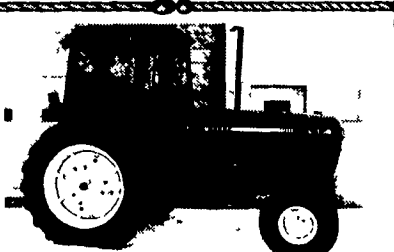


1 FARM EQUIPMENT



Ford 4000 SU, Diesel w/ldr, 4,500 Hrs.



JD 2950, Cab, Air, Hi-Low, Dual Remotes, 4,700 Hrs

FORD TRACTORS

17V-1511, c&a 4WD 208R38 3 remotes 2,900 hrs
 TS-110, cab, air 4WD, 184R34 pwr shift, 400 hrs
 9700 cab, air 184x38 4,900 hrs
 7710 II, cab **SOLD** /recper 184x34 2,700 hrs
 7710, cab air DP dual remotes 184x34 2,400 hrs
 6635, cab air 184x34 74x17 1,800 hrs
 6600, cab air DP dual remotes 5,800 hrs
 545C, 4WD rollbar 8x8 shuttle w/ldr
 5610 II, cab air dual remotes 155x38 2,300 hrs
 5030, cab 4WD shuttle 1,100 hrs
 4630, 4WD 8x8 shuttle w/Ford ldr 500 hrs
 4610 II, canopy, dual remotes w/Woods ldr, 1,900 hrs
 4600 diesel, 8 spd, 169x30, 3,700 hrs
 4100, diesel 8 spd 169x24 2,000 hrs
 4000, diesel, SOS trans, pwr steering
 4000 SU, diesel w/ldr, 4,500 hrs
 4000 SU, gas 8 spd, pwr steering, 3,500 hrs
 3930, 4WD shuttle w/Ford ldr 450 hrs
 3000, gas 8 spd pwr steering 500 hrs
 3000, gas 8 spd pwr steering 1971 3,400 hrs
 1620, 4WD hydro tort ldr 2,600 hrs
 1220, 4WD hydro tort ldr 200 hrs
 1210, 4WD ecart trans w/foot snow block
 Case IH 5130 cab air 4WD pwr shift 3,700 hrs
 Kubota B6200, 4WD hydro w/ldr 1,200 hrs

JOHN DEERE TRACTORS

6400, rollbar pwr quad, 184x34, 1,300 hrs
 2955, 4 post, 184x38, hi-low, 3,300 hrs
 2950, cab air, hi low dual remotes 4,700 hrs
 2755, cab air 4WD, hi low, dual remotes 5,900 hrs
 2755, 4WD hi low 540/1000, dual remotes 184x30 R & P axle 4,200 hrs
 2755, hi low dual remotes 540/1000 PTO 5,200 hrs
 2350, hi low 1 remote 169x30 2,300 hrs
 880, 2WD 22 hp w/ldr 650 hrs

EQUIPMENT

NH LX885, skid loader 2,500 hrs
 NH 570, baler w/hyd tension & belt thrower
 NH 28, blower
 NH 824, corn head
 Ford 515, sickle bar mower
 NH 52LA, loader fits 35 & TL models
 Ford 7310, loader fits 3930 to 5030
 Ford 7209, loader fits 3930 to 5030 2WD
 JD 146, loader w/valve
 JD pallet forks fits 245 loader
 JD 350, sickle bar mower
 NH 451, 3 pt sickle bar mower
 Woods M5, 3 pt rotary mower
 Weights to fit most Ford tractors

- ★ All Tractors Tested On Our Farms ★
- ★ Tractors Stored Inside ★
- ★ Lease & Financing Available ★
- ★ Please Call For Appointment ★

Burkholder Bros. Tractor

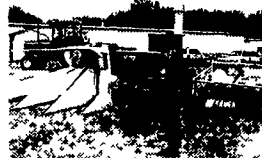
400 Flintville Rd., Lebanon, PA 17042
 (2 miles from Schaefferstown on Rt. 419 South. Turn right on Flintville Rd.)
 2 Locations
717-272-2352 **717-949-2123**
 Lloyd Burkholder Leon Burkholder
 330 Crest Rd., Lebanon, PA 400 Flintville Rd., Lebanon, PA
 Fax: 717-272-2352

CARLYLE & MARTIN, INC.

18138 Maugans Ave., Hagerstown, MD 21740
1-301-733-1873
 www.carlylemartin.com



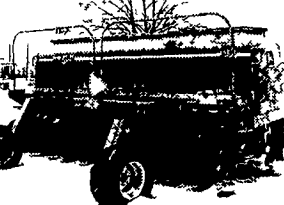
JD 935, 12' MoCo \$12,900



JD 3970 Harvester, Mint Condition, Base Machine \$12,900



Ford New Holland TC 45D Tractor/Loader/Backhoe 2000 Model - Low Hrs. \$21,900



JD 1560 No-Til Drill \$24,000

JD 7720 Combine	\$12,000
JD 9500 Combine	\$34,000
JD 2640 Tractor & Loader	\$12,900
JD 2550 Tractor & Loader	\$15,900
JD 240 Skid Steer, 1700 Hrs.	Call for Details
NH LX665 Skid Loader	\$10,900
NH 1495 SP Mower-Conditioner	\$5,500
JD 1360 MoCo	\$6,000
JD 820 MoCo	\$5,500
JD 930 Rotary Mower Conditioner	\$8,000
NH 489 Mower Conditioner	\$2,500
NH 495 Mower Conditioner	\$1,700
JD 7000 Corn Planter	\$3,500
JD 530 Round Baler	\$6,500
NH 851 Round Baler	\$3,500
JD 3950 Forage Harvester	\$8,500
JD 3940 Forage Harvester	\$3,500
JD 875 No-Till Cultivator	\$4,200

Int. 3388 2+2 w/Rear Duals \$10,500
 Int. 826 Hydro. **SOLD** gine \$6,500
 Case IH 600 Blower \$2,500
 IH 56 Blower \$1,500
For more info 610/476-8977

YAZOOIKEES Commercial Mowers
Poulan PRO Power Equipment

NOBLE OAK ENGINE REPAIR

Wisconsin Kohler
 Honda Kawasaki
 Briggs Robin

Lawn and Garden Equipment
 701 Noble Rd. 610-593-5458
 Christiana, PA 17509

GENERATORS

DIESEL GEN SET: 15 KW 120/240 volts with weatherproof housing, 60 gallon sub base fuel tank, block heater & battery charger
 NEW \$7,600

DIESEL GEN SET: 60 KW 120/240 volts with JOHN DEERE ENGINE. Auto or manual start.
 NEW \$9,800

DIESEL GEN SET: 105 KW 120/240 volts with JOHN DEERE ENGINE Auto or manual start
 NEW \$13,000

FORD MARATHON GEN SET: 10 KW 120/240 volts with Ford 1800 RPM water cooled engine LP gas carburetion
 USED \$2,100

WALLIS GENERATORS
 570/282-2342 800/231-2968

EDWIN HORNING & SONS FARM MACHINERY
 248 Meadow Valley Road, Ephrata, PA 17522
 Financing Available **717-733-7408 Phone 717-738-4897 Fax**

Fiat NH 195 Spreader, Tailgate, 410 Bu, Nice \$6,900

2000 Gehl 4635 SX Aux. Hyd. 66" Bucket, 352 Hrs., Nice. \$12,100

Fiat NH 185 Spreader, Hyd. Dr. Web. 2 Btr., 287 Bu, Nice. \$5,900

2000 Gehl 4835 SXT, 57 HP, 322 Hrs, Nice \$12,900

TRACTORS

CIH 5140 2 WD PowerShift, Open Sta, 2800 Hrs \$18,800
 '93 Ford 7740 Powerstar SLE 4x4, Cab, Air, Heat, Powershift 2698 Hrs w/7411 Loader \$23,500
 Ford 1720 4x4 S S S w/Cab, 1508 Hrs, 27 H P, w/7108 Loader, Nice \$10,700
 JD 2555, Cab, Hi & Lo, 2 Hyd, 540 & 1000 PTO, 4050 Hrs \$18,200
 JD 620, 3 Pt & Toplink Wide Front, Fenders \$4,500
 JD 2950 4x4, Cab, Air, Hilo, 2 Hyds, 1 Owner, 4,700 Hrs, Nice \$19,900

HAY EQUIPMENT
Specializing in Quality Hay Equipment

JD 337 Baler w/40 Ejector \$5,200
 NH 72 Bale Thrower (complete) for 570, 575 \$2,300
 NH 276 Baler, Super Sweep, Recon, Nice \$3,000
 NH 256 Rake w/Dolly Wheel \$1,575
 Kuhn GF 5000 4 Star Tedder 17' \$1,500
 NH 474 Haybine, 7' Cut \$2,200
 JD 348 Baler, Hyd Tension, Green Pickup, 1/4 Turn \$7,700
 JD 468 Baler, 16x18 Bale, Green Pickup, Hyd Tension w/40 Ej Ele Cont \$7,500
 Kuhn GRS 25 Rake/Tedder Combo \$1,250
 Fransgard SR 3200, Rptary Rake Tandem Axle, 3 Pt 9'2' \$2,300
 JD 40 Bale Ejector \$1,100
 JD 336 Baler w/30 Ejector \$2,800
 FNH 570 Blaer w/72Th, Hyd Tongue \$8,500
 NH 316 Baler w/70 Hyd Dr TH \$4,600
 Kverneland TA227 3 Pt Disc Mower, 9' \$2,800
 JD 328 Baler w/40 Ejector, Elect Controls \$5,800
 Agco NI 4624 Rake & Tedder \$2,650
 Fiat NH 617 Disc Mower, 9" \$3,200
 NH 311 baler w/70 Thrower \$4,650
 NH 316 baler w/Chute, Low Wear \$4,850
 Pequea 910 Hay Tedder, 9' PTO Drive, New \$1,850
 NH 467 Haybine 7' \$1,500

UNI SYSTEM EQUIPMENT

NI 727 Husker w/Elevator, Nice \$850

GRAIN DRILLS

CIH 5300 24x6 w/Press Wheels \$2,950

CORN PICKERS

NI 325 - 12 Roll Bed, Low Wear \$3,900

SKID LOADERS

Gehl 5635 DXT Cab, Heat, 1173 hrs \$13,500
 2000 Gehl 4635 SX, 44 Hp Diesel, 345 Hrs \$12,100
 2000 Gehl 4835 SXT, 57 Hp Diesel, 322 Hrs \$12,900

CORN PLANTERS

White 5100 4 Row Frame No Till, PTO/Air, Inse, Monitor, Nice \$3,250
 JD 7000 4x38 Liquid Fert Monitor \$2,450
 JD 7000 4R Conservation No Till, Dry Fert, Monitor, \$4,200
 White 6100-6x30 Dry Fe **SOLD** e, No Till, Monitor, Nice \$9,300

MANURE SPREADERS

Fiat NH 195 410 Bu w/Tailgate, 3 Yrs Old, Nice \$6,900
 NI 3632 320 Bu T/A w/Tailgate \$3,850
 Fiat NH 185, 287 Bu, 2 Btr, Tailgate, Hyd Dr, Nice \$5,900
 Gehl 1315 Scavenger **SOLD** al \$5,200
 FNH 514 171 Bu w/Tailgate \$2,650

MISC. EQUIPMENT

Red Devil 8' Snow Blower, 3 Pt \$1,850
 18 4x38 Clamp-On-Duals off JD 4250 \$450
 Load Auger for NH Mill or Harv Hyd Dr \$500
 NEW Tire Scrapers, 6-1/2 Ft 3 Pt and Skid Steer Mount \$700

TILLAGE EQUIPMENT

IH 720 Plow 4x18 Spring **SOLD** Coulters, Nice \$2,350
 IH 55 Chisel Plow, 10T, Pull \$1,250
 Yetter 3412 Rotary Hoe, 12', 3 Pt, Nice \$825
 Brillion 13' Cultipacker \$1,150
 Brillion 14' Cultipacker \$1,250
 Brillion 10' Cultipacker \$675
 Ford 151-4x16 Auto Reset, Same as White 508 \$1,650
 Koehn 13' S-Tine Fid Cult w/Rolling Basket \$1,600
 Kverneland 5x18 Reset Plow, Square Beam \$2,200
 IH 45 Vibrashank Field Cult, 8' Pull Type \$950

FORAGE EQUIPMENT

CIH 600 Blower, Key Style \$2,300
 Miller Pro 5200 Wagon, 3 Btr, Roof, 16', T/A Gear \$7,400
 JD 3950, Harv Hyd. Tong, Elec Controls \$4,650
 Gehl 1 Row Corn Head \$150
 JD 2 Row Wide Green, Nice \$750
 JD 7' Pickup \$1,600
 NH 824 Corn Hd \$2,350
 Gehl 1060 Harvester, Tandem Axle, Elec Control, Auto Max \$2,950
 Gehl 3038 2 Row N Corn Head \$750
 Gehl HA1110 Hay Head \$750
 FNH 790W Pickup Head \$1,200

GRINDER MIXERS

Gehl 170 w/Scales w/Ext Auger Coming In
 Gehl 135 Hyd Dr **SOLD** u. \$2,450
 Gehl 100 Hyd Drive \$3,300
 Gehl 125 Hyd. Dr. \$4,900

PTO GENERATORS & ALTERNATORS

Onan 16 KW 1 Ph or 25 KW 3 Ph. PTO, on Cart \$1,300