

# Demos, 'Equipment Tryouts' Tops To Farm Show Visitors

(Continued from Page A34)

• Hooper Inc. demonstrated a lift and turn angle hitch with a 20-foot Great Plains grain drill and 8-row Case IH corn planter. Demonstration coordinator was Daryl Peifer, corporate sales manager.

• Binkley & Hurst Bros. demonstrated the Gehl AL730 Agri-Loader, Gehl CTL 60 Compact Track Loader, and Gehl 7800 Skid-Steer loader with attached silage mill. Demonstration coordinator was Ken Scott, Gehl Company product specialist.

• Case IH demonstrated their new 1200 12-row pivoting planter. Demonstration coordinator was Ron Thompson, product specialist for Crop Production Group.

• Agco demonstrated Fendt

tractors. Demonstration coordinator was Dick Bielby, Agco territory manager.

• John Deere demonstrated the new infinitely variable speed transmission on tractors along with the 956 mower-conditioner. Demonstration coordinator was Brian Kimpton, John Deere assistant territory manager.

• In addition to a seminar, New Holland also provided a demonstration of the CR combines with Dan Harting, North American product specialist, and Gary Wojeck, product manager, combines. Speaking at the seminar was Curt Hoffman, hay and forage product specialist.

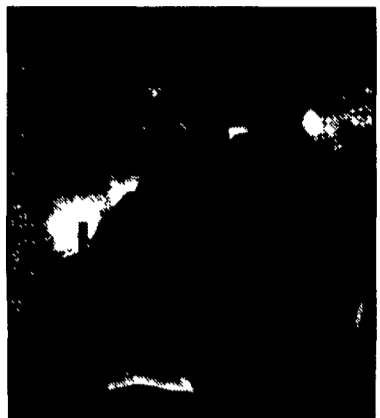
Seminars included New Holland with high moisture baleage, Fendt tractors, John Deere with new technological applications,

GPS applications, etc.; and Hooper Inc with the New Case IH Axial Flow Combines.

Other seminars were conducted by Blue Seal Feeds on rabbit, dairy goat, and sheep nutrition; Sollenberger Silo on innovations in feed storage and handling,

and a tower silo with elevated floors; NSIA, Inc. with using computers on your farm for field mapping and other tasks;

and Iron Solutions with determining used farm equipment values and using the Internet to track dealerships.



Dave Newcomer, Taneytown, Md., Agco territory manager, drove an MF6290 120 hp tractor during demonstrations at Farm Show.



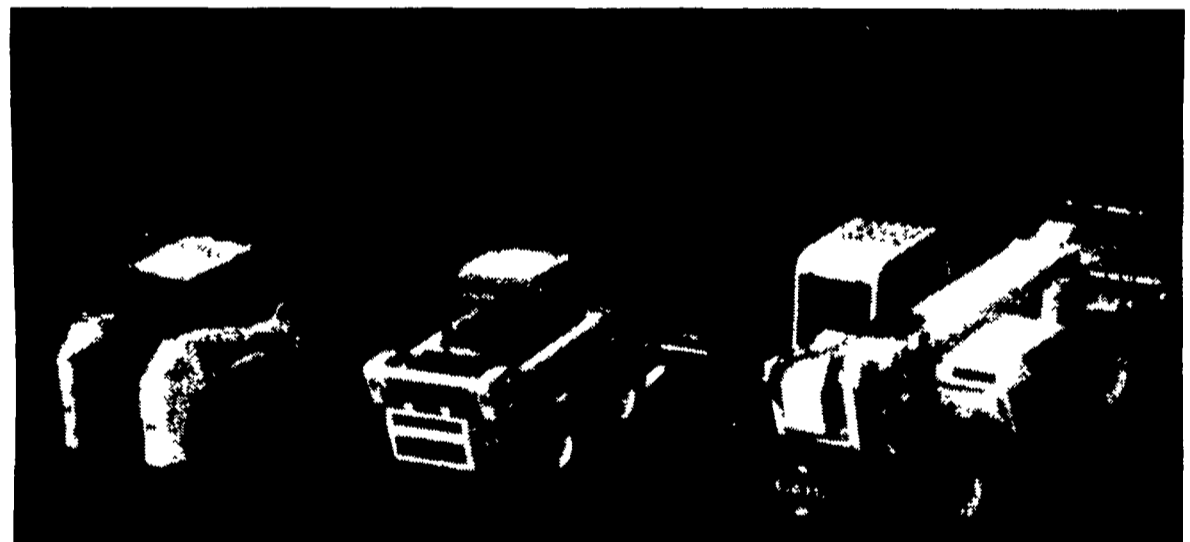
Joe Shipsky, Agco territory manager, drove the Agco RT95 95 hp tractor during demonstrations in the Large Arena.



Agco staged tractor and tedder demonstrations in the Large Arena at the Farm Show Complex early this week, during Farmer Days.



Assisting in the demonstrations were, from left, Ken Diller, Hooper Inc. sales representative; Daryl Peifer, corporate sales manager; and Bob Sangrey, Hooper service technician.



Binkley & Hurst Bros. provided these Gehl products for demonstrations during Farmer Days in the Large Arena.



At the seminar, Jeffrey Miller, Blue Seal Feeds, spoke about rabbit, dairy goat, and sheep nutrition.



Hooper Inc. also demonstrated this Great Plains 2010P 20-foot drill hooked up to a Case Magnum MX210 180-hp tractor.



Hooper Inc. demonstrated this Case IH 8-row 1200 ASM planter during Farmer Days.