

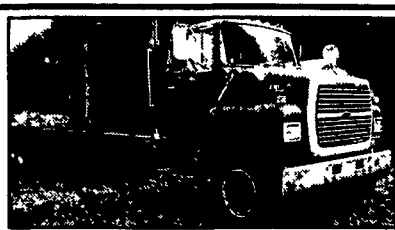


1984 S2500 IH
(1992 Refurb) DT466 7 Sp., AB, PS Central Hydraulics 38,000 GVW, 10 Telescopic Steel Body Air Lock Rear, New Paint, Good Condition **\$12,750**

1975 IH 1200
4x4, 345 Gas, 4 Sp 2 Speed Transfer Case PS, w/8 Snow Plow and Meyer Hopper Spreader w/Gas Engine Works Good **\$1,950**

1985 LN8000 FORD
Cab & Chassis 84" C-A 3208 CAT, 210HP, 7 Sp., AB, PS 36,000 GVW, Air Lock Rear **\$3,500**

1988 FRUEHAUF
All Aluminum Flat Trailer 44' Air Ride, Spread Axle Winches & Tie Downs Good Arch! **\$4,875**



1989 LN9000 FORD
L10-300 Cummins 9 Sp., AB, PS Double framed, 16F, 40 R, Walking beam suspension NO RUST! Not a stretched tractor **\$14,500** w/23' NEW SCOTT Silage body **\$27,500**

1979 PAYSTAR IH
New Aluminum Cab - 1989, Rebuilt Cummins Jake 9 Sp., Central Hyd., 13' Steel Bed, Runs Good, 58,400 GVW **\$8,500**

1994 LTL 9000 FORD
Day Cab 425HP CAT 15 Sp., Jake, 176,000 Miles, Air Ride, Long Wheel Base Tractor - Like NEW **\$29,750**

SNOW PLOWS, SPREADERS, OTHER UNITS AVAILABLE.
(4) BUCKET TRUCKS, 28'-34'
GEHL Model 4500 Skid Steer - 65' Bucket Good Condition!
CALL FOR DETAILS!

SUNNY ACRE SALES

R D #2 BOX 266 TYRONE, PA 16636 814/742-8202 814/742-7303

I'M NOT LION...

THE CLASSIFIED LIVESTOCK SECTION HAS BEASTLY SELECTIONS!

FEATHERLITE TRAILERS

Model 8127
20' @ \$9,995

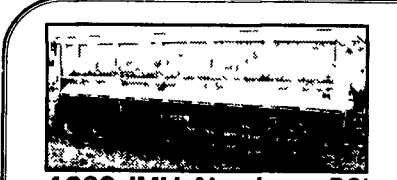
STAR TRANSPORTERS
717-859-7010 800-651-4171
4170 Oregon Pike, Ephrata, PA 17522

Best USED TRUCKS
of Pa. Inc.

131 Kline Rd., Bethel, PA 19507
We're Located Right On I78 @ Exit 17

WE BUY TRUCKS

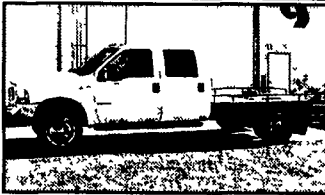
717-933-9792
Fax 933-9782 www.besttrucks.net



1989 JMH Aluminum 28' Tub Dump Frame Type
67" Sides; 3-Way Gate **\$10,900**



Fruehauf 35' Frame Type Tub Dump Trailer
Tri-Axle w/Lift Axle; 60" Sides **\$12,900**



2000 Ford F-550 Crew Cab
2WD w/8' Flatdeck w/fifth wheel plate; Lariat Package Loaded w/Leather; 7.3 Liter Diesel; 6 Sp Trans., Excellent Condition, **\$22,900**



Case 3594 4WD Farm Tractor
180 HP Turbo Diesel; 20.8R38 Tires; 3 Point Hitch w/3 Remotes; Hours 5800; **\$24,500**



Curry Supply Co.
Curryville, PA

1-800-345-2829 814-793-2829

TRAILER ENTERPRISES, INC.

ON SITE - FULL SERVICE HITCH & REPAIR FACILITY.
MAKING SURE YOU GET THE BEST IN THE INDUSTRY!

- X MERHOW - EBY - MORITZ - BISON & OTHERS
- X GOOSENECK FLATBEDS
- X CARGO TRAILERS
- X AUTO CARRIERS
- X LAWN SERVICE & UTILITY
- X INDUSTRIAL & EQUIPMENT

• HOURS •
Monday - Friday 8 to 5; Saturday 9 to 12
See us at www.WashingtonCounty.com

13121 Maugansville Rd. Hagerstown, MD 21740
301/791-5343
Fax: 301/791-9363

"REVVIN' TO TAKE CARE OF ALL YOUR TRAILER NEEDS."

Merhow Verylite 2 Horse W/Dressing Room All Aluminum \$3,600
See Them At www.merhow.com

Moritz CBS 6 x 13 Stock Trailer \$3,600
Check them out at www.moritznational.com

BRI-MAR DUMP TRAILERS

EBY

20'x7' MAVERICK MODEL GOOSENECK (SHOWN W/OPT. HUB CAPS) **\$10,700**

BRI-MAR - YOU WON'T BUY THEM FOR LESS ANYWHERE! GUARANTEED!

TRAILERS ARE OUR BUSINESS!

<p>1995 GMC 10' Hi Cube, Diesel, Automatic, 125k Miles, White \$8,500</p>	<p>1994 International 4700, 24' Van, DT408-190 hp (Engine Work Completed), 5 Speed, 29000 GVW, Air Brakes, White, Spoke Wheels \$8,500</p>	<p>(4) 1995 IHC 8100 Single Axle Day Cabs, Detroit SR50-315hp, 9 Speed, 300-500K Miles, Air Ride, AC, PS, Cruise, Htd Mirrors, 75R22.5 Tires, Prices Starting At \$10,500</p>	<p>1985 International CO9670, Cummins 350 hp, 10 speed, 500k miles, AC, 2 Alum Steer Wheels, Alum Bumper, Maroon Clean! \$4,000</p>
<p>1987 Ford LN8000 10 Bay Beverage Truck Hackney Aluminum Body, CAT 3208-210hp, Allison Automatic 150k Miles, 32 600 GVW, 4 Full Bays, 11R20, New Mich Steer Tires, Fit Soda Pallets, 53x105 51 Over Wheels \$6,500</p>	<p>1995 Isuzu NPR 14' Van, Diesel 135HP, Automatic, 263k Miles, White, AC, 14,250 GVW, No Lift Gate, \$4,500</p>	<p>1992 GMC Digger Derrick, CAT 3116 185HP 5/2 Speed 95K Miles, 1993 TECO Model A33SC B2 ASXO Upper Controls & Bucket Winch Capacity 12 000 lbs 90% Virgin Rear Tires 7K Hours \$17,000</p>	<p>1998 Volvo VNL610, 12 7-430/470 HP, 10 Speed, 605K Miles, 10 Steel Wheels, Single Bunk, White, Wheel to Wheel, Leave Maintained \$26,000</p>
<p>(4) 12 Bay Beverage Trucks, 1989 Ford LN8000, 7.8-215 hp, Automatic, 32,000 GVW, Air Brake, White, 112/117/115/118k miles, Mickey Bodies \$6,500 EACH</p>	<p>1995 Chevrolet W4, 14' Van, V8 Gas, Auto, 14250 GVW, AC, Lift Gate, 156K Miles, White, Decals On Van \$6,000</p>	<p>1994 Kenworth W900L 60" Hi Rise Aerodyne II, CAT 3406E 435hp, 13 speed, 740k miles, Red in color VIT interior 3:70 rear ratio, Rebuilt Fuel injection pump, \$19,900</p>	<p>1994 Fruehauf 48' x 102' Alum Van, Spring Suspension, Roll Up Rear Door, Sliders, Front Corner Damage \$2,600</p>
<p>1995 FTL FLD12064ST, 48" Flat Top, CAT 3406-410hp, 15 Speed, 600k, Aluminum Wheels, 3 73 Ratio, Jake Brake, Dual Stacks \$10,900</p>	<p>1987 Ford LN8000 14' Dump, 7.8-210 dci, Allison Automatic, 29,900 GVW, Air brakes AC, bud wheels chrome bumper, Air Tail gate, Red 195k miles \$7,900</p>	<p>1998 International 8100 10' Steel Dump, L10-280, 9 Speed, 262K Miles, 33,000 GVW, Air Brakes, Red, Cruise, Air Lines & Pintle Hook In Rear \$29,900</p>	<p>1992 Pete 378 48' Sleeper, Detroit 60 Series 350hp, 9 Speed, Spring Suspension, AC, 700k Miles, White & Purple, Removable Sleeper \$6,100</p>
<p>1994 Volvo WG64T Tandem Day Cab VED12-360 hp, 9 Speed Synchronized Transmission, Ave 700k Miles, Red, Air Ride, Jake Brake, AC \$6,900</p>	<p>1998 Pete 379 119' hood, 63" Unibilt Ultracab Sleeper, Detroit 12 7 430/470 Hp., 0 Speed, 3 90 Rear Ratio, 628K Miles, Virgin Tires, 10 Aluminum Wheels, Tilt/Tele Accent Interior Jake Brake, Black \$27,900</p>	<p>1995 IHC 8200 (6) Single Axle Day Cabs, Cummins M11-280hp, 9 Speed, 7-800K Miles, Spring Suspension, AC, PS, Prices Starting At \$8,750</p>	<p>1998 Ford F700 10' Steel Dump, 7 0 Gas, Automatic, 39K Miles, 26000 GVW, Hydraulic Brakes, White, 10R22.5 Tires, Bench Seat, 60% Tires \$16,500</p>
<p>1998 Pete 397 63" Sleeper, 12 7-500hp, 13 Speed, 568K Miles, Red, American Class Interior, Pete Low Leaf Air Ride, 95% Virgin Rubber \$40,000</p>	<p>1996 IHC 4700 24' Cab & Chassis, DT466 175hp, Automatic, New White, 25,000 GVW, Air Brakes, AC, 153k miles \$13,500</p>	<p>2000 IHC 4900 22' Cab & Chassis, DT466-250hp, 6 Speed, 29,000 GVW, Hydraulic Brakes, AC, 6 Alum Wheels, Alum Bumper, Leather Wrap Steering Wheel, Premium Interior, Power Windows & Locks, Tilt & Tele Steer Wheel \$16,500</p>	<p>1997 FL70 16' Van, CAT 3126-210 hp, 69k Miles, 6 Speed, 33000 GVW, Air Brakes, AC, Lime Green, Lift Gates, AC, Tool Boxes Under Body \$16,000</p>
<p>2000 Volvo VNL610 Detroit 500 hp, 10 Speed, 610k Miles, White, 10 Alum Wheels, Tank Skirts, Jake Brake, 95% Virgin Tires \$32,500</p>	<p>(2) Storage Trailers: 1980-1984 Dorsey 42 long, 96 wide Spring Suspension, Swing Doors \$1,400 Ea.</p>	<p>Van Bodies for Sale: Mostly 1995's, 22 & 24' Long, Roll Up Doors \$750 Ea.</p>	<p>1998 IHC 4900 22' Flat Bed, DT466-195HP, 6 Speed, 120K Miles, 25,500 GVW, Hydraulic Brakes, Yellow, AC \$17,900</p>

"Bid on our trucks at:" www.truck-network.com