

www.keimchevy.com

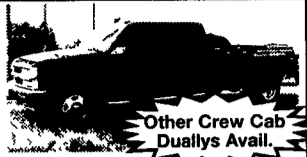


Over 100 Vehicles to choose from



Rt. 30, Lincoln Highway East Paradise, PA 17562
Only 4 mi. East of Rockvale Outlets
(717) 768-8225
1-800-223-KEIM

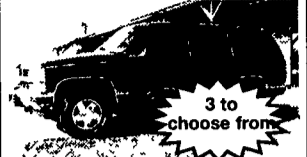
Lancaster Farming, Saturday,
January 18, 2003-D37



Other Crew Cab Duallys Avail.
98 CHEVY 1 TON CREW CAB DUALY 4x4
8 Cyl., AT, A/C, Cruise, Tilt, PW, PDL, P Seat, Cass /CD, Black, 50,000 Mi



2000 CHEVY 2500 REG. CAB 4X4
8 Cyl , AT, A/C, Tilt, Cruise, Cass, w/Plow, 33,000 Mi., Very Good Cond., Local Trade



3 to choose from
99 CHEVY TAHOE 4 DR. 4x4 LS
8 Cyl., AT, A/C, Cruise, Tilt, PW, PDL, Cass , CD, TuTone, Only 35,000 Mi



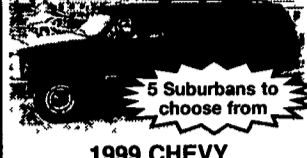
02 CHEVY 1500 HD CREW CAB, 4x4
Carmine, 18,000 Mi , 6 Cyl , AT, A/C, Cruise, Tilt, PW, PDL, CD, Local Trade



2000 CHEVY 2500 CREW CAB LS 4X4
8 Cyl , AT, A/C, Cruise, Tilt, PW, PDL, Cass, Pewter, 41,000 Miles



02 CHEVY 2500 HD REG. CAB, 4X4
8 Cyl , AT, A/C, Cruise, Tilt, PW, PDL, CD, Only 13,000 Mi



5 Suburbans to choose from
1999 CHEVY SUBURBAN 2500 LT
4x4, 8 Cyl (7.4L), AT, A/C, Cruise, Tilt, PW, PDL, Leather, Trailering Package, Barn Doors, Only 42,000 Mi , Emerald Green



2000 CHEVY K1500
Reg Cab, 4x4
8 Cyl , AT, A/C, Cruise, Tilt, PW, PDL, CD, Only 32,000 Mi., Indigo Blue/Pewter

STOP BY TO VISIT OUR NEW CHEVY COMMERCIAL TRUCK DIVISION

Here are some examples...



03 CHEVY C4500 KODIAK
12 Ft Box w/Ramp, 16,500 GVW



02 CHEVY G30 EXPRESS
Cutaway, AT, A/C, 14' Box
Call for Huge Discount



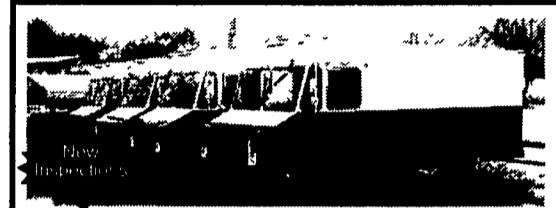
03 CHEVY KODIAK C4500
6.6 Duramax Diesel, AT, A/C, 10-1/2 Ft. Dump Bed, PTO
Plus 3 Chassis Cab Models



03 CHEVY 3500
w/8' Dump, Duramax Diesel, 4WD, AT, A/C,
Ready for Snow Plow



'96 Peterbilt
6WD, 8-Spd. Trans., 10 Yd. Mixer
\$24,500 with or without mixer
610/589-5555



Stepvans - All Aluminum, 14 ft, single & dual rear wheels, automatic & manual transmissions, 4 cyl & 8 cyl diesel engines, service records, former snack trucks, many to choose from...

Starting at \$2500.00

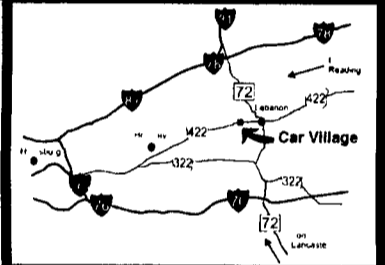
Call 717-632-9600 or 717-465-7400
Meadowbrook Auto Sales

Business Hours:
Mon.-Fri. 9 to 9;
Sat. 9-4

2300 W. CUMBERLAND ST.
(Rt. 422)
LEBANON, PA 17042
(Across From Lebanon Valley Mall)

CAR VILLAGE

HEAVY DUTY TRUCKS



PHONE 717-274-2000 Toll Free 1-800-650-1420



\$15,900
95 FORD F250 4x4
Heavy Duty 3/4 Ton Powerstroke Turbo Diesel, Auto, A/C, Dual Tank, Lock Out Hubs, Vinyl Floor



4x4 SUPER CAB DUALY 2000 FORD F350
Very Strong Powerstroke Turbo Diesel, 6 Spd, Loaded XLT, Factory Tow Pkg., Aluminum Wheels



PICTURE PERFECT
99 DODGE 2500 4x4
You Will Like This One. Only 28,000 Miles, 24 Valve Cummins Turbo Diesel, Auto., Tow Pkg , All Options



2001 DODGE 2500 CLUB CAB 4x4
24 Valve Cummins Diesel, Factory Tow Pkg , Laramie SLT, Only 19,000 Miles, Remaining New Tk Warranty



5 SP SHORTBED • 99 DODGE 2500 4X4
Cummins Turbo Diesel, 5 Sp, Cold A/C, Loaded, All Options, Only 41,000 Miles
2 Available



HEAVY CHEVY 2000 CHEVY K3500 CREW DUALY, 4 WHEEL DRIVE
Hey Chevy guys. This is the one. Only 28,000 Miles. High output, 6.5 Turbo diesel, Auto, All Power Options, Swing Out Mirrors & More



EVERYBODY'S TALKING ABOUT THE DURAMAX DIESEL
01 CHEVY 2500 H.D. SUPERCAB 4x4
Allison Auto, H.D. Trailer Tow Pkg., Aluminum Wheels & Plenty More. A Very Strong Truck



PERFECT
99 DODGE 3500 QUAD CAB 4x4
Only 30,000 Actual Miles, 24 Valve Cummins Turbo Diesel, Auto, Loaded All Options. A Very Good Tow Machine



99 CHEVY K3500 SUPER CAB DUALY
Very Nice Truck 4x4 V8, Auto, A/C, 6 Good Tires. Ready To Go. \$9,900



POWERSTROKE DIESEL 99 FORD F250 SUPER CAB
4 Wheel Drive
Loaded XLT, All Options, Auto., Alloy Wheels, \$24,900



99 CHEVY K2500 4x4
Very Nice Heavy Duty 3/4 Ton. Only 46,000 Miles. Remainder New Tk. Warranty. High Output 6.5 Turbo, Diesel, AT, A/C, Fact. Tow Pkg. Lots Of Tk For The Money. Only \$19,900.



\$18,900
97 FORD F250 4x4 PICKUP
Very Nice, Heavy Duty 3/4 Ton, Powerstroke Turbo Diesel, AT, AC, Dual Tanks, Tow Pkg., Alloy Wheels, A Must See.



SUPER CLEAN
00 FORD F250 SUPER CAB 4x4
Loaded XLT, Powerstroke Turbo Diesel, Auto, A/C, 40/20/40 Seat, Run Boards, Alloy Wheels. Ford Warranty. A Must See.



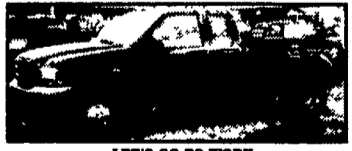
5 SPD. DIESEL • \$22,900 99 GMC K3500 CREW CAB
Single Rear Wheel High Output, 6.5 Turbo Diesel, 5 Spd., A/C, Limited Slip 4.10 Gears, Only 59,000 Miles, Remaining Factory Warranty



\$15,900
95 DODGE 2500 4X4
Cummins Turbo Diesel, Auto, A/C, Tow Pkg , Alloy Wheels, Runs Strong.



GSP POWERSTROKE 99 FORD F250 SUPERCAB 4x4
8 Foot Bed, Fact. Tow Pkg., Capt. Chairs, Console, Limited Slip Axle, 53,000 Actual Miles



LET'S GO TO WORK
2001 FORD F350 SUPER CAB, DUALY 4X4 XL Pkg. Not Fancy Just Nice, Only 20,000 Miles. Powerstroke Turbo Diesel, 6 Sp., A/C, Cloth Bench, Vinyl Floor.



SHORTBED 4 DOOR 99 FORD F250 4x4
39,000 Actual Miles, Very Clean, XLT Lariat Powerstroke Turbo Diesel, Auto, A/C, Tow Pkg., Alloy Wheels, A Real Good Looker

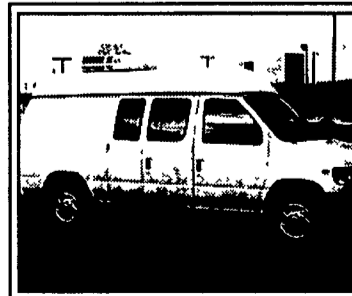


2001 F-350 CREW CAB
Diesel, 4x4, XLT, 21,000 Miles, Auto
— 2 Available —



4x4 DIESEL SUPER CAB 2000 FORD XLT
It's Perfect Only 52,000 Miles
Powerstroke Turbo Diesel, Auto, A/C, Tow Pkg Alloy Wheels. 40/20/40 Seat.

FLATBEDS, WORK & DUMP TRUCKS



DIESEL MOBILE WORKSTATION 99 FORD E-350 HI-TOP CARGO VAN
AT, A/C & Roof A/C, Cabinets, Countertop, Electric Outlets, Lights, Generator and More
\$17,900



12 Foot Flatbed Dump 2000 Ford 450 Super Duty
Real Nice, 31,000 Miles, Powerstroke Turbo Diesel, 6 Spd., A/C, Tow Pkg



ONLY 8,000 MILES 2001 FORD F350 4x4 Dump Tk. A Nice One. Auto, Powerstroke Diesel, A/C, Pintle Hitch/ Heavy 12,500 G.V.W Remaining New Tk. Warranty



450 SUPER DUTY CREW CAB 2000 FORD, Only 10,000 Miles, Powerstroke Diesel, Auto, A/C, A Very Nice Tk., 10 Ft Bed



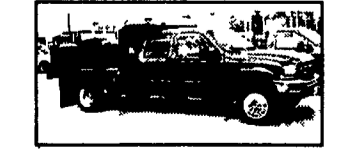
650 4 DOOR, 2000 FORD SUPER DUTY
Rare Find, Powerstroke Turbo Diesel, 6 Spd., A/C, Only 24,000 Miles, 21 Foot Flatbed With Ramps



\$7,900
90 FORD SUPER DUTY DUMP
Diesel Power, 5 Sp, 90,800 Actual Miles, 12 Foot Dump Body, Great Truck for Around the Farm.



2000 FORD 550 SUPER DUTY DUMP TRUCK
Like New, Only 7,000 Miles, Powerstroke Turbo Diesel, AT, AC, 3 Yd. Body



CREW CAB DUMP TK • 2000 FORD 450
Very Nice, Only 10,000 Miles, Powerstroke Turbo Diesel, Auto, A/C, Alloy Wheels, 3 Yd. Dump Body



4x4 CHASSIS 97 FORD F350
Extra Nice, 58,000 Actual Miles, Powerstroke Diesel, 5 Sp., A/C, 161 W B., 84" C A