

32 MISCELLANEOUS

Small steam boiler, good for greenhouse, gas fired, good cond., \$250. 717-367-4797

Copper thin pipe, 3/4 & 1" dia., approx 600'. 717-367-4797

Keystoker coal stove, \$500. '73 Int camper bus, \$1,000. 610-767-8750.

Clean metal barrels \$3/ea, clean plastic barrels \$1/ea. Volume discounts available. 717-534-4392 or 717-534-5417.

WANT TO BUY: Leather working sewing machines espec: Singer 29 series & Landis 1-800-428-0087.

Like new 280,000 BTU clean burn waste oil furnace, complete system, 1 yr warranty, shipping prepaid, \$2,495. 574-534-8392.

Wood heat. Clean, safe & efficient Central Boiler OUTDOOR WOOD FURNACE. Heats multiple buildings. Available in carbon steel & titanium enhanced stainless. Kenneth Stauffer, 570/539-4606, 888/539-4606

'95 Chevy TD 4-wd, ext. cab, short bed, exc. cond. \$8,500; JD dsl eng. 4-cyl complete v.g. cond. \$1,800; 5550 Ford backhoe for parts; (2) 200-hp Yamaha boat engs. & controls exc. cond. 280 hrs \$3,900/ea. 215-262-4084 or 215-766-8361.

33 RECREATIONAL VEHICLES

2001 Artic Cat 250 Quad exc. cond. \$2,600. 610-760-1422.

MF Ski Whiz exc shape, \$1,000. 717-432-1039 or pager 717-782-9398 digital.

34 AUTOS

1991 Trans Am 305 MPI, 2 comp. chips, 3" pipe spec. intk manifold, needs wiring harness, 197k mi, make offer. 610-913-0661

1979 Chevy high top van, wheelchair lift, 350 ci, new tires, new inspection, 87k mi, good condition, asking \$1,695 OBO. 717-225-4765.

Wanted: '97 or newer 15 pass Ford van, has bad eng or high mileage, no problem, must have decent body & interior. 706-437-0952, 706-833-2375

'99 Chevy Malibu LS, 4 dr, V6, auto, PS, PB, PW, PDL, cruise, tilt, air, 38,000 one owner miles, new radials, black, \$8,975. 717-733-2873

2000 FORD TAURUS SE

Most all options, 76,000 mi. Ex. Cond. \$5,695 (814) 793-2339 Day (814) 793-0158 Eve.

2000 Int alum body dump trk, 4700 series, 230 hp eng, Allison 4 spd trans, A/C, 25,500 GVW, new cond, 900 mi, \$40,000 610-837-0791.

'95 GMC SL 3500, 4x4, 454 auto, PS, PB, air, AM/FM, 9200/GVW, 91,000 one owner miles, new radials, \$10,500. 717-733-2873

'99 Chevy Express 3500 LS, 12 pass., 350 auto, PS, PB, PW, PDL, cruise, tilt, dual air, AM/FM/Cass/CD, burgundy, 73,000 one owner miles, new radials, \$12,900. 717-733-2873

1976 Ford F-600, 13' Omaha dump, 20,000 lbs, \$2,100. 1973 Ford 9000, 8V92 Det, 13 sod, 10' alum lime spreader, auger booms, \$5,500. LanCo, 717-733-0724.

24' Storage Trailer, Dry, \$500. VM# 717-661-9225.

3306 Cat eng, \$1800. Peterbilt hood for 378 se-back axle, \$1500. Peterbilt cab, \$4500. Fisher snowplow, large, quick mount, municipal plow, fits Ford 450, or Ford F550, \$3500. '92 Freightliner FL112 single axle for parts or repair. Cummins L10 engine, 13 spd trans, 3.55 ratio rear (air ride). 717-768-8922

95 Mack CL713 Tri-axle dump truck, 16' steel ox box, 18 front, 44 rear, 427 18spd \$53,500 OBO, 717-475-2275.

1997 Peterbilt 379 extended hood tractor, 235" wheel base, 48" standup sleeper, 425 cat motor w/100,000 mi on partial rebuilt, 15 spd, 10 alum wheels, wet line, VG cond w/many extras. \$32,000. 410-438-2883

Dodge '97 Ram, ex cab, 3500 Cum turbo, Dsl, Laramie, SLT, 106T mi, 1 ton, 5 spd, 4WD, dual wheel, tow pkg, green, good cond, \$16,900 must sell. 717-226-3562

1994 Dodge 2500 p/up, 4x4, auto, V10, SLT, good cond, \$7000. 717-872-9152

35 TRUCKS AND TRAILERS



WM. COHEN & SONS, INC.

"THE TRUCK PARTS STORE"
HEAVY DUTY TRUCK PARTS - NEW & USED - REBUILT REARS & TRANSMISSIONS
610-269-1298 Fax 610-269-0787 www.cohentruckparts.com



1990 GMC 7000 DT-506 Detroit 8.2 Diesel, 5 Speed, 2 Speed Rear, 7,000 Lbs, 19,000 Lbs Rear, Hydraulic Brakes Salt Spreader, 12 Ft Angle Plow



1983 Ford DT-504 F-350 110,263 Mi, V-8, 460 HP, 4 Speed, 4 WD, Back Pack Tool Box & Snow Plow, 8 Ft Dump Length



New Flatbeds Available Sizes currently available are 12', 14', 20', 22' and 24' Racks are also available



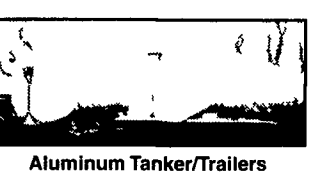
1968 Ford F-600 330 V8, 4spd, 2spd rear hydraulic brakes, 9' dump body, 21,000 GVW, runs excellent



Michigan Loader Model L30 Quick Coupler, Comes With 1 Yard Bucket and 60" Forks, Runs Excellent

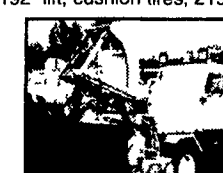


Kalmar Forklift, propane powered, 4435 lb capacity, 42" forks, 192" lift, cushion tires, 2194 hours



(9) 40' - 45' 1970's & Newer Steel Flatbed Trailers (also have drop deck trailers) some have sliding tandems, all in good condition \$2,500/Ea and Up

Aluminum Tanker/Trailers 7500 gal and up



BJD1 SICARO 4 Speed, 1969 Power Blower, Cummins 220

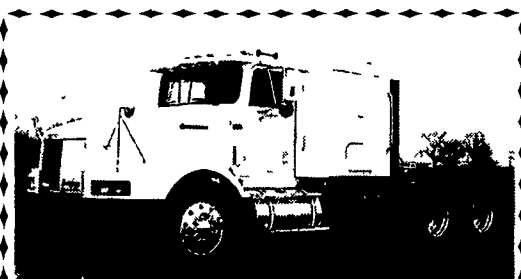
32A ANTIQUES

Hercules Ind gas Hit-N-Miss eng, 3-1/2hp, 1500 RPM, \$900. 814-697-7255

2 Antique oak round extension tables, 1 oak dbl. bed. 717/352-3256

Antique butcher kettle stove \$200. 717-292-2950

35 TRUCKS AND TRAILERS



1995 Int 9400, 207" W.B., Cummins N-14 w/Jake, Fuller 13 spd., Air Suspension, All-Aluminum 24.5" wheels, Ex. tires, Only 487,218 miles, Ex. Cond No Sunday Calls. \$16,900 (717) 597-5623



1992 Ford 450 Diesel, 5 speed, Very Clean, 140,000 miles, 12 ft dump, \$11,500 717-445-9917



1999 GMC 1500, 4x4 Pickup 4.3 Liter, Auto., AC, Cruise Control, Tool Box, Mint Condition, 144K Highway Miles, 1 Orig. Owner, \$11,000 OBO 973/729-9896 973/583-3761 Cell

35 TRUCKS AND TRAILERS

28' x 102" VAN, 1985 trailmobile, very nice \$900. 570-546-5574.

'86 Ford Jacobs rollback, 350 dsl, exc cond, \$9,500 firm. 717-653-9002.

'95 Ford F150 4x4, 8' bed, 5 spd, A/C, 300 6cyl, 64k mi, 1 owner, warranty, \$6,795. 717-653-9002.

93 Chev G30 Cube Trk, 69,700 Orig. Mi., Exc. Cond., V8, Auto w/ Overdrive. 570-799-0148.

'94 frameless East dump trailer, 40'x96"x78" sides, air ride, spread, roll tarp, ten alum wheels, good tires & brakes, overall good cond, \$15,500. 215-249-1227.

'86 Ford F250 4x4, dsl, 4 spd, 177,000 1-owner mi, \$3500. 301-416-0285

1978 Int truck. 18' flatbed, new eng, \$1,200 obo. 301-596-9700.

'99 F250 extended cab, 4wd, power stroke dsl, 6 spd trans, 55,000 mi, \$23,500 trades considered. 814-793-3023 after 5pm

1990 Int'l 350HP Cat, Jake brake, pintle hook, great cond. \$22,500/NEG. 610-760-1422.

Flat trailer, 7000# DOT aprvd, 23' wood bed. 610-913-0661

1964 IH dump truck, runs good, needs insp., battery, side window, has flatbed 6, new rad. brakes, best offer. 610-913-0661

2001 gooseneck flatbed 20+5 10-T, 102 wide, 2 standup ramps, nice, \$5195 OBO. 717-487-3940

THE HONDRO EXPERIENCE

OVER 200 TRUCKS AVAILABLE FROM OUR 4 DEALERSHIPS

E-TOWN CHEVROLET

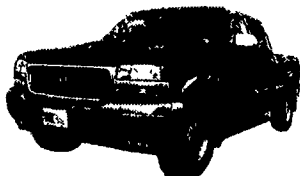
Oldsmobile Pontiac
Route 230 E-Town • 717-361-7776
877-924-6644

2001 DODGE RAM 2500 SLT PLUS PKG.



4x4, Auto, Diesel, Quad Cab, Leather

99 GMC SIERRA 1500 EXT CAB

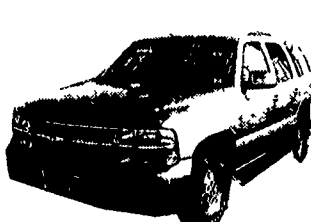


4x4 Leather, Heated Seats, Equipped

E-TOWN DODGE

Route 230 E-Town • 717-367-6644
877-924-6644

2001 CHEVY TAHOE LT



V-8, Auto Leather, Sun Roof, Heated Seats

PHILLIPS FORD

Route 72 Manheim • 717-665-3551
877-597-3551

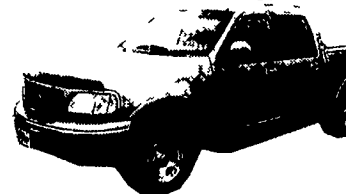
2002 FORD E350 PASSENGER VAN XLT

V-8, Auto, Only 19,000 Miles



2001 FORD SUPER (NEW), XLT

4x4, V-8, Auto, AC Equipped 30,000 Miles



MANHEIM CHRYSLER GMC

Route 72 Manheim • 717-665-2473
877-603-2473

00 GMC YUKON SLT

Sunroof, #3G108A, List \$27,995

\$25,900



- 99 Dodge Durango SLT Auto, V-8, AC, PW&L, T&C
- 00 Dodge Dakota Club Cab 4x4's
- 02 Dodge Ram Quad cab, 4x4, Sport, V-8, Auto, AC, PW & L, C&T
- 02 Chevy Silverado 1500 Quad Cab, 4x4, Z-71 off RD, V-8, Auto
- 00 Dodge Ram 3500, Diesel, Quad, 4x4, Auto
- 98 Ford F150 EXT Cab 4x4, XLT, V-8, Auto, Equipped

	LIST	SALE
00 GMC 2500 Sierra 4x4,	\$23,995	\$21,995
99 GMC Reg Cab 4x4,	\$15,995	\$13,995
99 GMC Sierra Z71, Ext Cab, 4x4,	\$21,595	\$19,595
97 Ford Truck Expedition, 2G330C	\$16,995	\$14,495
99 Chevy Suburban SLE 4x4,	\$23,995	\$21,995
97 Chevrolet K1500 4x4 Ext. Cab	\$14,995	\$12,995
98 Toyota Tacoma, 4x4, Reg Cab	\$12,495	\$9,995

All prices include Rebates, Exclude Tax, Tag and \$55 Dock Fee

LOADS OF USED PICKUPS
CALL ANY STORE FOR DETAILS
Visit us @ www.hondruauto.com

OVER 10 CHASSIS IMMEDIATELY AVAILABLE FOR BODY INSTALLATION AT OUR LOCAL BODY COMPANIES!