

**Crawler Loaders:** Allis Chalmers HD11G loader, \$2,500 OBO, Massey Ferguson 500 loader \$5,000, Cat 941 loader \$7,500, Cat 955K \$12,000. Heavy Equipment Loader Parts, Grantville, PA, 717-469-0039.

**Wheel loaders:** Terex 7231, 4x4, articulating, \$7,500. Terex 7281, 4x4, 5-1/2 yd bucket \$18,000. Cat 944 rebuilt eng \$7,000. Many more to choose from. Heavy Equipment Loader Parts, Grantville, PA, 717-469-0039.

'99 Bobcat 873, front hyd, 72" bkt, new deep tread tires, 1320 hrs, ex cond, \$16,500. '00 20ft equip trailer w/steel ramps, 12,000 lb licensed for 10,000, \$1200 obo. 610-330-9600

12,000 watt Yamaha generator, 22hp eng, 300 hrs, \$3,200. 717-949-3574.

Cat 941B crawler loader, 374 hrs on new U/C & total rebuild, used for farm use only, \$15,000. 717-543-0906 eves.

**BUYING & SELLING USED CONSTRUCTION EQUIPMENT, NEW & USED PARTS & ATTACHMENTS CALL**

**H.E.L.P., INC.**  
**(717) 469-0039**  
**FAX (717) 469-7679**

Specializing In Caterpillar Parts also available for Case, Fiat, IHC, Komatsu, Deere, Etc.

**ALL PARTS AT DISCOUNT PRICES!**  
**\*\*PARTS LOCATING SERVICES\*\***

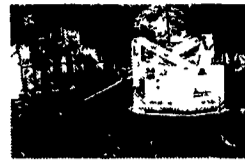
Call Us For Your Parts & Service Manual Needs

**HEAVY EQUIPMENT LOADER PARTS, INC.**  
10070 Allentown Blvd., Grantville, PA 17028

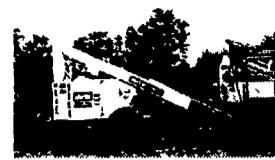
**1A CONSTRUCTION EQUIPMENT**



1995 JLG 40H, 2WD, DF, 8' platform, 2,600hrs \$8,850



1997 JLG 34HA, 34' articulating boom, 2WD, 5' platform, 1,000hrs \$6,750



1996 JLG 40HA 40' Articulating Boom 2WD, DF, 5' platform, 2,160hrs \$8,500



1994 Genie S40, 40' Straight Boom 2WD, DF, 3,000hrs Reconditioned \$11,500



1996 Grove AMZ66, 60' Art Boom 2WD, DF, 1,400hrs \$12,750



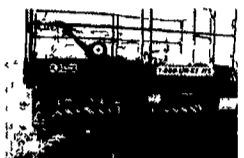
1989 Snorkel TBA60 4WD, DSL \$9,500



1995 MEC 2548HT 25' electric scissor lift \$2,500



1997 JLG 2033E, 20' Electric Scissor NM Tires, Deck Extension \$3,500



1997 Skyjack 7027, 27' RT Scissor 4WD, Kubota DF, 1,500hrs \$8,000



1995 JLG 60HA 60' Art Boom 2WD, Ford DF, Osc 3,200hrs \$12,000



1996 Grove MZ488, 42' Boomlift 4WD, Nissan DF, 6' platform, 1,740hrs \$11,500



1993 Stratolift TRX13 \$1,500



New 2002 Thomas 1300 Skid Steer 40HP Kubota DSL, AUX \$13,500



New 2002 Thomas 2200 Skid Steer 87HP Kubota DSL, AUX \$18,000



1997 Snorkel SL20, 20' electric scissor NM Tires, Deck Extension \$2,250



1997 Grove MZ66B, 60' Straight Boom 2WD, DSL, 1600hrs \$13,850

**ADI**

11915 Lurgan Rd, Orrstown, PA 17244

**717-532-4313 or 1-866-530-5438**

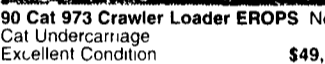
(10 miles North of Chambersburg on Rt. 997)



Cat 955H Crawler Loader, Good Condition \$10,000



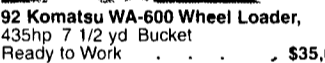
2 Manlifts: JLG 35' Electric \$5,500  
98 Condor 46 Diesel 4x4 \$10,500



90 Cat 973 Crawler Loader EROPS New Cat Undercarriage Excellent Condition \$49,500



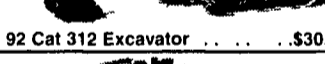
Ford A64 Wheel Loader, Cab w/Heat \$14,000



92 Komatsu WA-600 Wheel Loader, 435hp 7 1/2 yd Bucket Ready to Work \$35,000



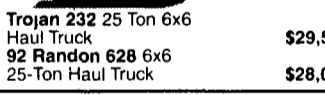
88 Cat 963, OROPS 4-in 1 Bucket \$28,500  
88 Cat 963, Cab GP Bucket \$36,000  
92 Cat 963, Cab GP Bucket \$42,000  
Cat 977L 14X Series \$19,500



92 Cat 312 Excavator \$30,000



Trojan 232 25 Ton 6x6 Haul Truck \$29,500



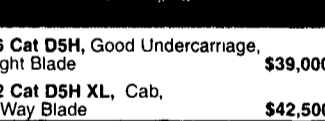
92 Randon 628 6x6 25-Ton Haul Truck \$28,000



88 JD 450G, Good U/C 6 Way Blade Rebuilt Engine \$19,000



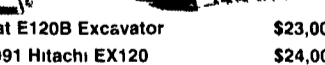
86 Cat D5H, Good Undercarriage, Tight Blade \$39,000



92 Cat D5H XL, Cab, 6-Way Blade \$42,500



Cat E120B Excavator \$23,000



1991 Hitachi EX120 \$24,000

**EQUIPMENT**

Cat EL300 Excavator w/ HYD. Hammer	\$29,500
Case 1845C Skid Loader	\$8,200
Case 1840 Skid Loader	\$9,500
JD 555 Crawler Loader	\$14,000
Cat 980B Wheel Loader w/Forks	\$18,500
94 Cat 416B 4x4, Ext Hoe	\$25,500
94 Bobcat 953	\$10,000

**PAVING EQUIPMENT**

Mauldin 500 Paver	\$3,500
Hyster 350C Roller	\$5,000
Case 252 Tandem Vibratory Roller	\$6,500
95 Ingersol Rand BA30 Tandem Vibratory Roller	\$6,500
Stone Wolfpack 2500 double drum asphalt roller	\$2,500



**Weaver's Equipment Sales**  
RD#1, Box 418, Milton, Pa. 17847  
Phone: 570-523-9598

**Winter Specials, Stop in and Choose One Today**  
This is a Good Time of the Year to Get into Your Fields and Clean Up the Fence Rows with a Loader from Binkley & Hurst Bros. Inc.

**Cse 580 K Cab 4 Wheel Drive Bucket Extenahoe Extra Reach**



with Wobble Stick 2 Lever Controls, Large 30" Trenching Bucket (UT4979)

**Cat 951 C Crawler Loader**



**Cat 966 B Articulated Wheel Loader with Cab & Heater**



4 Sp Power Shift, Rated 150 HP, 17 Ton Weight Class, Service Ready to Work UT5008 \$17,800

**Cat 955 L Crawler Loader with Cab**



Ready To Work UT5033 \$19,800

**Ask About Financing Tailored to Your Needs!**

**BINKLEY & HURST BROS. INC.**

133 Rothsville Station Rd.  
P O Box 0395, Lititz, PA 17543-0395  
Located 1/2 Mile North of Rothsville

**(717) 626-4705**

1-800-414-4705  
Fax 717-626-0996

Visit our Web Site at <http://www.caseih.com>

Case IH and Case Credit are registered trademarks of Case Corporation

