

**MAILBOX MARKET FOR SALE**

1969 Torino \$400, 30' Bucksaw \$100, old horse surry \$120, Jubilee tractor \$2500 abo, restorable 8N tractor \$700. Cape May 609-780-7348.

John Deere 21" push mower model Jx75 self-propelled 6 H/P 21" with Kawasaki engine. \$100. V/G cond. Electric start. \$150 Blair co. 814-696-3377.

Moulder: Hermance #60 3 1/2" x 7 1/4" w/100+ knives. 15 HP on heads 7 1/2 on feed oil ball bearing. 5500. Sullivan co. 570-924-3116.

1988 Clark fork lift 3000 lb electric, new battery low hrs. needs some work \$625. Bucks co. 215-669-2268.

2-Dodge D250 pkups Cummins eng auto \$3800 ea Bantam 350 hyd exc on track det eng \$3500. Boom & winch for 25 ton Pettibone. Cecil co. 410-378-2785.

4 grain hoppers on wheels 4'x4'x8' \$150 and 20 amp plasma cutter \$500. Snowmobiles polaris Indy 600 \$1100 El Tigre 6000 \$850. Dauphin Co. 717-362-9850.

1993 two horse trailer sundance goose-neck with dressing room garage kept, blue silver \$5600. Very good cond. Bucks Co. 215-345-1979.

Kawasaki mule 500 V/G cond. \$2,200. Adams Co. 717-677-9553.

4 yr old Arabian mare 2 1/2 yr. old Tenn/Walker gelding 1998 Jeep Cherokee runs great call for prices and info. Bedford co. 814-623-8696.

93 Jimmy 4.3 auto PW PDL cold AC push button, 4 WD cruise, 184K mi tow hitch, make offer. Cumb. Co. 717-486-7135.

1/4 ton chain hoist 115 volt single phase with trolley \$350; Gray metal shelving \$2 ea. Call for sizes. York Co. 717-993-3900.

Boer goats, fullblood buck, purebred buck, 75-88% does, 1-3 yrs. ABGA registered. \$150-300. Also have white cashmere goats. Juniata co. 717-527-2708.

Farmall Cub with six attachments 1964 BSA 650 chopper Holstein feeder steers 300# International 2000 bucket with forks. Leb. Co. 717-279-7140.

SA-41 Barbra Grene track paver, 50 ton, Lorraine truck crane 50' lattice boom diesel up and down \$2,000 ea. Berks Co. 610-562-2244.

JD #45 loader, good shape with 2 buckets and quick attach 8' Myers snowplow with trip, extra loader frame, \$475. York Co. 717-382-4881.

1990 Ford 250 Clubwagon 12 pass. V8 95,000 miles, \$2295 abo. Lanc. Co. 717-351-0450.

April sheep shearing order now border leister and Navajo-Churro wool also warmblood stud for sale. 4 yrs bay. Bedford co. 814-735-3897.

6 row John Blue tool bar to side dress corn with tank and pump. York Co. 717-244-2739.

Cadet snow blade \$150 Willys panel truck \$1,200 CJS top \$125, speaker system \$125, EZ GO golf cart, \$1,200. Lanc. co. 717-442-4279.

BMW 318i '83 Sun roof, 5-sp, 215K, runs well, asking \$895. Also 6 cyl 240 cu in Ford eng. \$150. York Co. 717-862-3527.

1969 TNT truck for sale 33,000 gross air, best offer. Berks Co. 610-562-7298.

Farmall F12 good shape but needs motor work good winter project. Lanc. Co. 610-286-5012.

2 stove pipe heaters 12 & 10 tube 3' high 22" wide 8" deep cast top & bottoms \$65 each. Can deliver. 50 mile extra Lehigh co. 610-756-6626.

Rhino 20 ft. flex wing mower \$5500. JD 4400 cab P.S. new radials \$23,500. Fred. Co. 301-371-7704.

OMC 450 grinder mixer 125 bu. good cond. \$1700 81 VV pickup with farm sticker. \$250. Leb. co. 717-949-3465.

John Deere 317 garden tractor with 48 inch mower deck. 500 hours exc. cond. Leb. Co. 717-866-8892.

John Deere 620 w/f with loader \$3,500 John Deere 720 LP gas 2 3pt \$3,800 or best offer. Berks co. 610-488-1292.

Ear corn in round crib \$50. 7 ton round metal feed bin with hopper \$600. Lanc. Co. 717-529-1114.

Snow plow 8' H.D. for I.H. 2000 loader or others two 6' one 7' small truck caps. B.O. Berks co. 610-582-4322.

Cooper Weatherman Master St. 185/65 R14 Mts on Dodge Neon wheels (2) \$60 abo. Berks Co. 610-582-7266.

50 disc blades off Krause 1/4" thick 1 1/2" shaft 18" diameter also top beater for New Idea 3629 spreader Lanc. Co. 717-285-4335.

Two food trailers 18' f o u r flyers 4 grill twelve two fryers 8' drill freezer ref. self contained. N.W. Berks co. 717-933-5250.

Tree lounge treestand with bow hunting adaptor, camouflaged, tree nest, pillow, bow holder, leveler, many more acc. \$325. Lanc. Co. 717-665-5899.

N.H. 474 7' haybine exc. cond. like new rolls, guards & knives with lift clyd. Shed kept nice \$2,995. Berks co. 610-8764.

All aluminum flat body removable sides cab protector with rails for dump 11 ft. long also international Hy-D cylinder Chester Co. 610-932-3710.

Seasoned firewood mostly oak split and delivered \$115. Full cord, cherry and walnut lumber 5/4 board air dried. Lanc. Co. 717-285-2670.

Winchester Model 75's sporter, \$750 Target - \$450. Model 61 Magnum \$950. Model 70's 308 FWT \$925. 264 - \$900. Collector quality Lanc. Co. 717-872-5787.

John Deere 3 bottom trailer plow \$300. Susq. Co. 570-756-3536.

English saddle - 17" black wintec. New girth, stirrup leathers, and stirrups. Used saddle pad. Asking \$175. Franklin co. 717-597-4494.

PTO generator on trailer 12KW \$1,200 fresh cows & heifers due in January and February. Berks Co. 610-777-8905.

15 head of Angus Semmental cross steers and heifers on hay & grain good cattle 400 to 600 Adams co. 717-677-8981.

Stock trlr BP 4 horse 1977 needs some work. Inspected until 6/03. \$500. Lanc. Co. 717-548-3207.

F250 XLT 96 short box 460 At crew cab, 120,000 mi. white ex. cond. \$10,500 abo. Lanc. co. 717-733-6590.

JD 620/630 block, hairline crack, \$125. ZeuCo quick hitch for 3 pt. \$175. No Sunday calls. Lanc. Co. 717-548-4923.

New snow blower F2450 fits F2400 Kabota with all attachments. Harford Co. 410-692-2422.

6 ft snobloue dbloger 3 pt. never used \$1,500 phone 717-532-2440 after 5 pm. Cumb. co. 717-532-2440.

IH 56 c/planter 4 row \$250, 200 gal trailer sprayer \$325, JD 660 rake w/dolly wheel \$1025; PTO 15 generator \$675; PTO grass/5. Lanc. Co. 717-653-5926.

Dewalt new 12" slide compound mod. 708 \$500 and 18 v. 1/4" hammer drill with batteries and charger \$220. Boyertown. Berks co. 610-367-7032.

1995 Chevy Berretta Z26 PS, PB, PW, AC, CC, new tires. Clean well maintained 108,000 miles \$4,600. Berks co. 610-944-7853.

JD 36' bale/grain conveyor. 2 big Dutchman chicken feeders. 2000' chain & trough. JD 125 chuck wagon. Lanc. Co. 717-665-3865.

Hotpoint heavy duty automatic electric dryer works good condition. \$75. York haul. Berks co. 717-933-8764.

Chevy Cavalier 1990 inspected until June \$300 as is. Birdcage, solid oak, great cond. 4' high \$175 abo. Perry Co. 717-582-3313.

1985 Diamond Red Giant tri axle log truck near new 120c prentice loader truck has \$174 miles \$32,000 abo. Sch. co. 570-345-8426.

Insulated van trailers 1988 46' \$2,750. 1989 Utility 42' spread \$4,250. 1997 379 Pete 63' N-14 \$47,250 neg. North'd Co. 570-758-1734.

John Deere 48" snow blade fits 1994-98 JD models 240, 260, 265, 285, 320, 325, 345, 355D \$200. 610-264-3695.

89 Ford 150 4x4 parts truck 302 engine runs drive train all complete body bad. \$300. Dauphin co. 717-692-3764.

Wisconsin engine good cond. \$400. Wanted: Wheel loader tractor 4WD running cond. will pay cash. Dauphin Co. 717-652-1957.

1948 mall two man chain saw 1948 mall one man chain saw. Berks co. 610-944-7229.

Heavy duty skid steer pallet forks 42" and 48" \$495. Lanc. Co. 717-355-0715.

SPA P.D.C. 220 volt like new will fit Thur 30" door \$3,000. Will trade for Oliver tractor. Hunterdon Co. 908-735-6501.

Ford 460 engine with C6 trans and 205 case complete runs \$550, 79 4x4 running gear supercab complete. Dauphin co. 717-692-3764.

Orig. Cab off 966 IH glass windows, canvas doors, fiberglass roof, will fit other tractors, asking \$300. Barrett Co. 301-387-5723.

1980 Chevy C30 12' stake body good condition auto \$4200 10 hp 3 ph blower dust collector. \$1300. Schuykill co. 570-345-2086.

Old manure spreader \$500; transport disk other EQ. FarmallC, Massy Harris, Massy Ferguson with loaders 16 HP Wisconsin elevator. York Co. 717-927-8137.

Snow plow fits front of JD 620 60 630 tractors, hyd. raise, manual angle, 8 ft. \$525 abo. Frederick Co. 301-293-4266.

6 year old registered quarter horse gelding, nice personality, rides but needs work. \$1500. Berks co. 610-823-5972.

ATV Polaris 95 2x4 300 w. snow plow like new \$2600 Cub Cadet 1720 38" cut hydro \$750. Alleg. Co. 301-777-7259.

86 Ford F-350 dump 460 V8 4-speed AC stereo new tires new inspection utility boxes, \$5900 88,000 miles. Berks co. 610-944-6468.

Band saw, Rockwell 20 inch single phase good cond., \$900. Can deliver, reasonable rate. Fulton Co. 717-294-3646.

John Deere and Brillion older 12' cultimulchers for parts or fix \$250 each. Logantown PA. Clinton co. 570-725-3157.

20 amp service with brakors and meter base, used ground source heat pump, storm windows 30' x 47' 1/4", stormdoor 36". Lanc. Co. 717-484-0677.

PB Zimmerman self locking adjustable head gates 39 head good condition. \$1200 abo. Berks co. 610-926-3278.

Lincoln SA200 gas drive welder on trailer, runs & welds excellent, \$1200; JD. 70 gas p/s, \$2850. Lycoming Co. 570-419-1099.

Luck now TMR wagon, 285 model, works perfectly, needs some metal repair, \$1200. Cecil Co. 410-658-6325.

2 - 1995 Ski-Doo snowmobiles, SLE touring rotax 500 reverse, 1600 mi on ea., helmets, Kodiak trailer, \$5300 for all. Lanc. Co. 717-203-6845 717-665-3845.

Houle 8'-12' vari-depth pit pump, very good condition, \$6200 abo. Lebanon 717-629-6456.

John Deere 300 loader good condition extras, chains etc. etc. \$6000 4 cast iron heating radiators \$35 each. Dauphin co. 717-545-9289.

MF 410 combine and parts NH 469 haybine AC 600 NT cornplanter \$450 MH 20A grain drill \$100. Northumberland Co. 570-758-9220.

12 acre farm near Hershey, brick farm house, 4 bedroom, 2 1/2 bath, 2 car garage, cherry kitchen 2 fireplaces, outbuildings, fillable ground & woodland. Lebanon co. 717-838-6270.

Hot water radiators \$50 each wood overhead 9'x10' garage door complete \$100. Double stainless sink w/faucet \$25. Dauphin Co. 717-533-6117.

18' Omaha standard grain body with 23-ton energy hoist, combination pump reserve nice good condition \$4500 Leave message. Lanc. co. 717-367-4970.

1996 250 Ford pick-up w/ Myers snow plow four wheel drive 100,000 miles, A/C exc. cond. \$12,000 neg. Montg. Co. 610-539-8183.

400 amp gas driven Hobart welder on trailer with 100 ft of welding leads runs excellent \$700. 570-275-4252.

Ford 4000 airport tractor with cab 8' snowplow chains runs great \$2995 abo. Bucks Co. 215-536-6297. 215-536-2549.

Single row, walk behind, potato plow, pull with tractor or horse; asking \$100. Dauphin co. 717-469-2481.

2001 Ford 152 super cab 14,800 miles asking \$20,000 like new call weekdays 8-4. Montg. Co. 610-539-8183.

1986 Ford diesel crew cab runs good \$1500 valve grinding outfit \$350 350 Chevy motor runs good \$300. Dauphin co. 717-545-9289.

24" wood planer present P-24 with knife grinder \$3500 16" wood jointer Yates American \$2200 both 5 HP 3 PH North'd co. 570-339-5777.

Stainless steel 3 comp sink double dr. board with faucet & drains 8' overall perf. cond. deliv. poss. \$650. Montg. Co. 610-754-0023.

Farm show Winross collector trucks 1993, 1994, 1997 \$45 each. Farm show bank 1991 1st year made \$40. York co. 717-432-4782.

John Deere 720 diesel with No. 10 side mount mower \$4,000 abo. Chester Co. 610-593-2063.

Winchester rifles 1894 32 spec takedown octagor BBL. \$1050 Model 42 .410 pump \$950. 69 and 69A 22 cal. \$225 ea. York Co. 717-292-6292.

Hardwood firewood \$50 pickup load. Perry co. 717-589-3941.

Red Limousin bull. One year old in march. Ready for breeding this spring. \$600 Fulton Co. 814-685-3499.

Tire chains 13.6-28 14.9-24 \$150, Lt 235/85N6 \$40, 11-22.5 \$100 other sizes. Fork lift carpet pole 10 ft. \$250. Warren Co. 908-454-3366.

"Warm morning" coal stove. New brown enamel unused classic old faithful reliable top loading home heater. Last model. Montgomery co. 610-667-6876.

18.4x38 chains good condition \$175 surge electric brain \$50 Koster Crop taster \$125. Call after 6 P.M. York co. 717-456-9893.

Holly #16344 hamburger press with 4 sheets \$75 homemade butcher paper holder WKL hold 18" 24" paper. \$25. York co. 1-717-235-3751.

Snowmobiles 1972 Polaris Colt 294 two for \$500 1973 Rupp Nitro 400 1,445 miles excellent condition \$1,000. York co. 717-235-5442.

500 lb. all stainless steel butcher scale with waist high stainless steel table on top of scale, with wheels. Lanc. co. 717-656-7353.

24 ton feed bins; also 1800 ft. 2 in. black steel pipe. Lanc. Co. 717-393-4886.

3 pt. hay rack, field ready, new paint, one new bearing dozen new tires, \$200. VHF business radios, reasonable. Perry Co. 717-582-7222.

100HP 453N Detroit power unit, \$3200. 75HP 353N Detroit power unit w/540 PTO drive, \$3800. Lanc. Co. 717-733-3890.

6' Woods 3 pt. angle blade w/rubber edge, good shape, \$275. Lanc. Co. 717-733-2873.

Wanted diesel engine for 1992 Ford F-700, 6.6, 7.8, or Cummins 5.9, 8.3, call before 7 am, after 7 pm. Lanc. Co. 717-627-0845.

Old dinner bell. Lanc. Co. 717-665-5196.

2 Work Horses acclimated, ready for work, sound, works anywhere. \$900 & \$1,100. Lancaster Co., 717-445-7191.

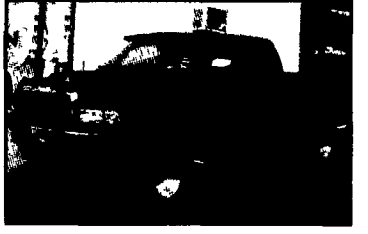
**35 TRUCKS AND TRAILERS**

**Blaise Alexander Auto Outlet**

Rt #61 Mt. Carmel, PA

**570-339-3580**

*We Trade Anything*



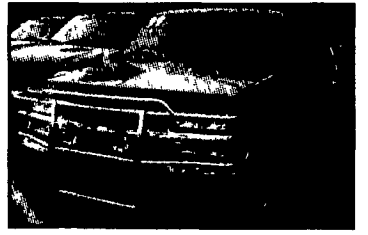
97 Dodge Ram Ext. Cab Shortbox 4x4 lots of extras (11078D)

**\$12,900**



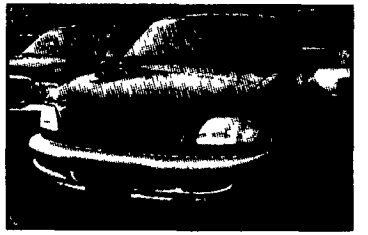
98 Ford F150 3rd door Shortbox Offroad 4x4 oversized wheels and tires (72337T)

**\$19,500**



99 Chevrolet Suburban LT 4x4 Leather, Super clean (72282T)

**\$19,900**



97 Ford F150 3rd door Shortbox 5 Spd 4x4 (72295T)

**\$12,500**



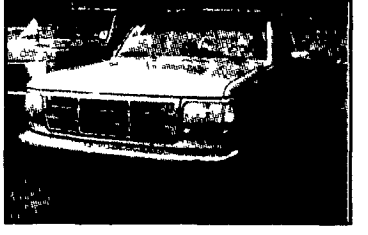
99 Ford F250 Superduty QuadCab Longbox 4x4 (72355T)

**\$16,500**



94 Ford F250 4x4 Brand New Boss Plow (72326X)

**\$11,500**



94 Ford F250 Heavy Duty Diesel. Automatic 4x4 (72353T)

**\$8,500**



98 Arctic Cat ZR600 Lots of extras (11049D)

**\$3,900**