

Socializing, Learning, Watching

Farm Show Provides All Three For Sheep Exhibitor

(Continued from Page A23)

market lamb for the ring, Jaymi enjoys showing the breed.

"They have a different attitude than other sheep," she said. "They're easier to work with."

In addition, they are easy keepers. "Last year Cotton had her lamb on her own, and we didn't even know it" until they found the little lamb that Jaymi showed as a market lamb at a local fair.

The work aspect is a consideration, however.

"For market lambs, you just shave the wool, but for Corriedales you trim the wool, then wash up to the stomach line," she said. Then exhibitors make the rest of the wool dirty to show the whiteness of the wool underneath and the crimp.

Clay mixed with water, mill or grain dust, or even some paints are used to make the newly-trimmed wool look "dirty," the

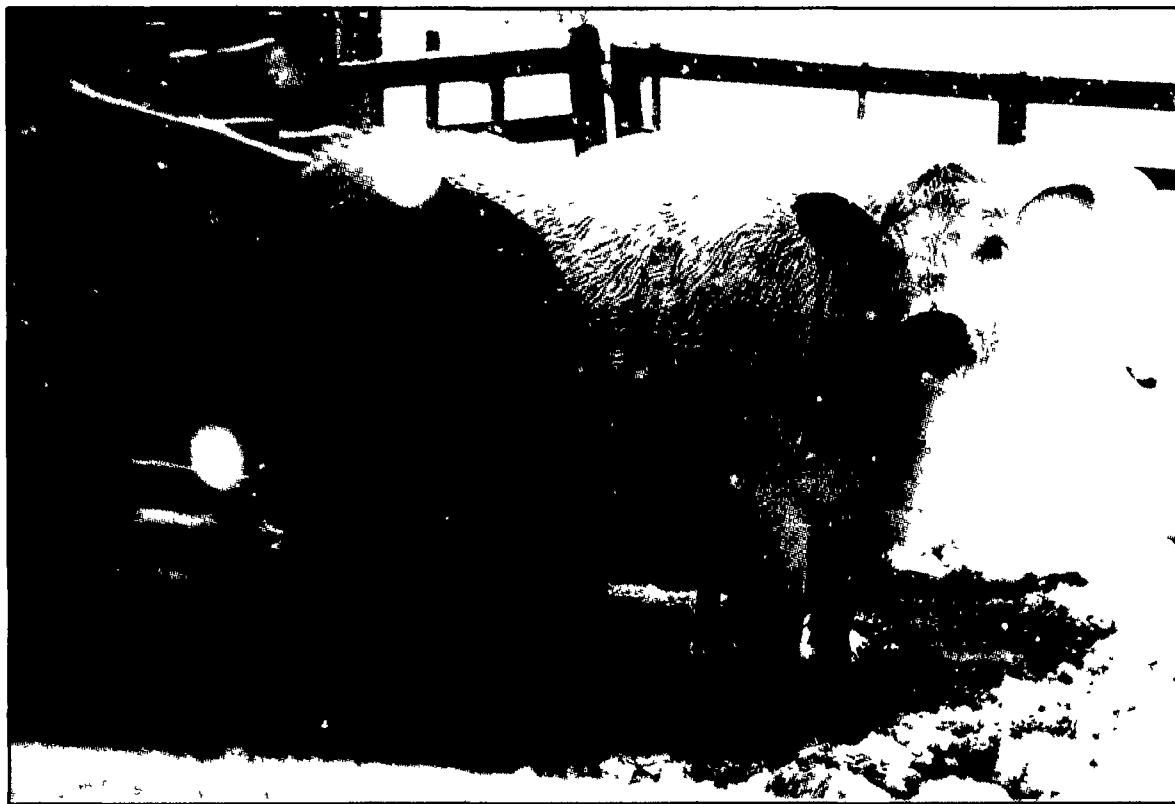
way Corriedales are properly shown.

When Jaymi got her lamb from the Corriedale association, she attended a clinic they sponsored to learn how to fit her sheep — a process that is still ongoing, she says.

The sheep must be trimmed to show height, a wide rear end and smaller front end. "It's a lot more than just slicking them down, when what you see is what you get," such as in the market lamb



Jaymi McMichael hopes to build on "Cotton's" win last year at the Farm Show.



Several cattle join the sheep at Thistle Rock Farm. The British White Park (at right), "Libby," is a family favorite.

competition, according to Julie.

In addition to sheep, she owns three head of cattle herself. However there are eight head in all, since the family also raises beef to sell.

Fourteen-acre Thistle Rock

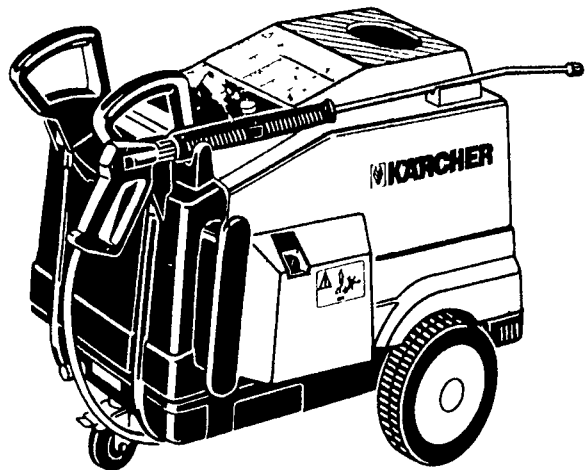
Farm is rented out for corn production. The McMichaels also use the land for pastures and for growing the strawberries and raspberries that they sell at roadside.

GROWER & MARKETER FEATURES EXOTICS

The Feb. 1 issue includes *Lancaster Farming's Grower & Marketer*, with features on speciality and exotic vegetable crops. Also scheduled: a feature on aquatic production, a preview of the Mid-Atlantic Fruit and Vegetable Convention in Hershey, and producer event news.

FARM SHOW SPECIALS

Booths 105-107 New Expo Hall



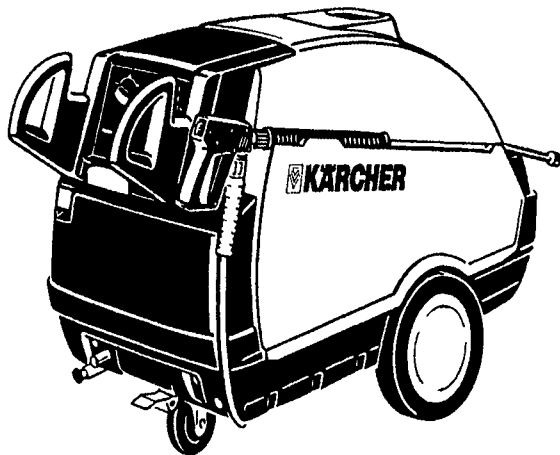
HDS 501C 110V

1200 PSI, 2.2 GPM, Hot Water Pressure Washer

List \$2,395.00

Special \$1,895⁰⁰

New Model



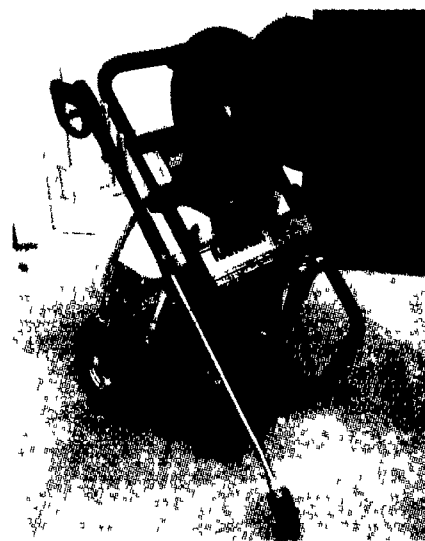
HDS 1000 220V10

2250 PSI, 4.5 GPM, Cold • Hot • Steam

List \$5,595.00

Special \$3,295⁰⁰

Limited Quantities



Karcher HD 3000

9 HP Honda, 3000 psi, 3 gpm, Free Dirt Blaster Nozzle & Hose Reel

Special Purchase

\$899⁰⁰

Limited Quantities

Kochel Equipment Co.

3030 Ridge Rd. (Rt. 23) Elverson, PA

610-286-5519

888-922-9680

www.kochequipment.com

*** 20% Off On All Karcher Accessories**