



SEE US AT THE PENNSYLVANIA FARM SHOW
January, Sat. Jan 11 to Sat. Jan 18 In The
NEW Expo Building Area 360-508

"Special EZ FLEX Retail Financing is Available on all our products. Ask your local dealer about programs that may be in effect now!"

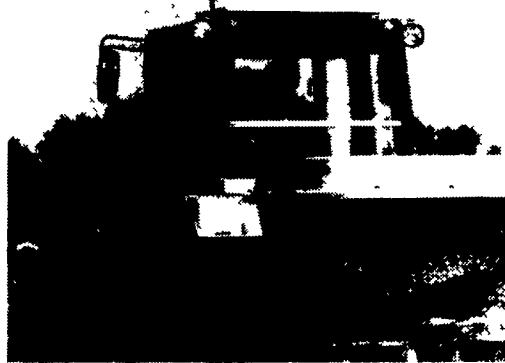


ANDEX 653 DOUBLE ROTARY RAKE

Makes one or two windrows!



- Trail Type • Hydraulic Lift • Tandem Rake Axles Optional • 19'8" Working Width when Forming 1 Windrow • 21'4" Working Width when Forming 2 Windrows • 9'5" Transport Width



Superflow Spreaders Fertilizer/Seeder

Superflow Spreaders are the most accurate broadcast spreaders in the world. The unique pendulum action keeps the spread pattern close to the rear of the machine while at the same time providing a symmetrical pattern on both sides.

FIXED CHAMBER ROUND BALERS

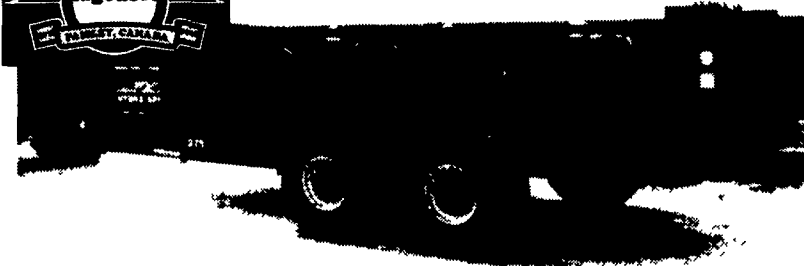


VICON RF Series balers produce high density silage or dry bales. Special features assure consistent bales year after year of use.

Models Available:	Bale Size	Pick Up Widths	Binding System
RF 121	4'x4'	66"	Twine Only
RF 122	4'x4'	83"	Twine, Net, Both
RF 122-OC	4'x4'	83"	Twine, Net, Both w/cutting system



HYDRA-SPREAD



HYDRAULIC PUSH-GATE MANURE SPREADER

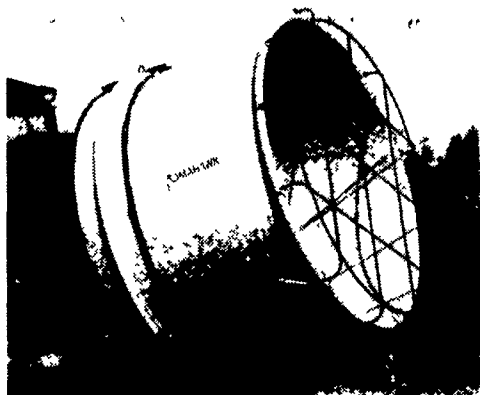


LUCKNOW MIXER FEEDERS



TEAGLE BALE CHOPPER

- Chop and feed the wettest silage bales, dry hay, straw, and corn stalks



BALE KING

BALE PROCESSOR

- Processing improves palatability
- Reduces feed costs



TEAGLE SQUARE BALE CHOPPER



THE TEAGLE 8080TC Was Developed To Feed Both Round and Large Square Bales, As Well As Chopped Silage For Buunk Feeding.



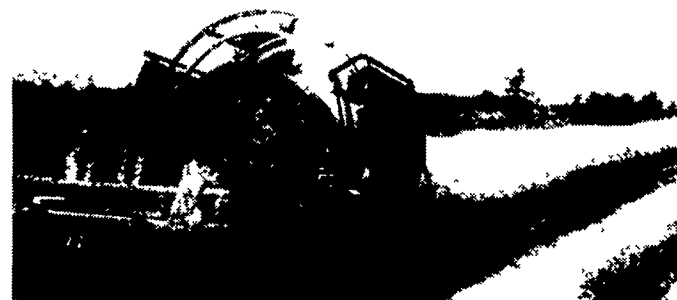
LEON

2 WD & 4 WD DOZER BLADES
 Mount Kits For Over 1000 Makes & Models

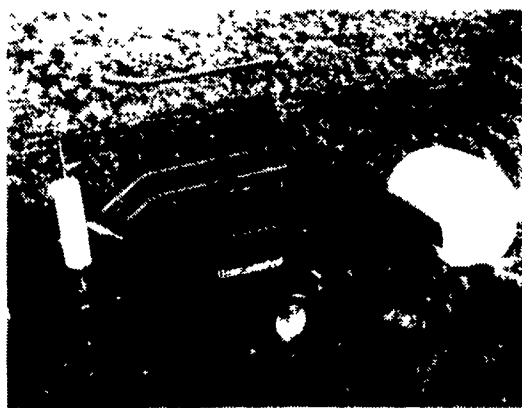


Tube-Line wrappers for all round bales or large square bales are available in either manual or fully automatic

BALE WRAPPER



TANCO BALE WRAPPERS



Cummings & Bricker, Inc.

100-120 Lehigh Ave., Batavia, NY 14021 100 Stover Dr., Carlisle, PA 17013
 1-800-252-1552 1-800-222-8969

Email info @ cummingsandbricker.com Web site: www.cummingsandbricker.com

Call or write for more information and your nearest dealer. Distributed by:

"Serving farmers through farm equipment dealers since 1961"

