

Harrisburg PA Farm Show

13, 14 & 15 Exhibition Hall

**Hoover Machinery Companies
PA Farm Show!**



SHOW 2003 SEMINAR SCHEDULE

Seminars in the Large Meeting Room

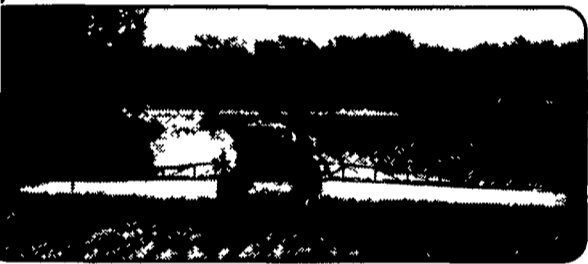
12:45 - 2:45
Jan. 13 Hooper will be holding a seminar on the new
Jan. 14 Case-IH 8010 AFX Axial-Flow Combine.
Jan. 15

**Stop By and Talk To Us About
Brand New Case-IH 8010 AFX Combine That's New for 2003!**

EQUIPMENT ON DISPLAY AT THE PA FARM SHOW

PATRIOT SPX 3150 SPRAYER

**Hooper - The Case-IH
Application Specialists**



- High Clearance
- More Acreage
- Comfortable Cab
- Convenience
- Spraying Accuracy
- Variable Boom Length
- Backed by Hooper Parts & Service



Patriot SPX 3150 Sprayer
 w/152 HP, 500 or 750 Gallon
 Tank, and 60', 75',
 or 90' Booms

CASE IH 1200 ASM 12-ROW PIVOT TRANSPORT PLANTER

**Reach Your Full
Yield Potential**

- Advanced Seed Meter Technology (ASM)
- Variable Rate Hydraulic Drive
- AFS Universal Display Monitor
- Trailing, Pivot Transport Frame
- Multiple Seed Varieties
- Constant Full Seed Meter



TRANSPORT WIDTH OF ONLY 12' 6"

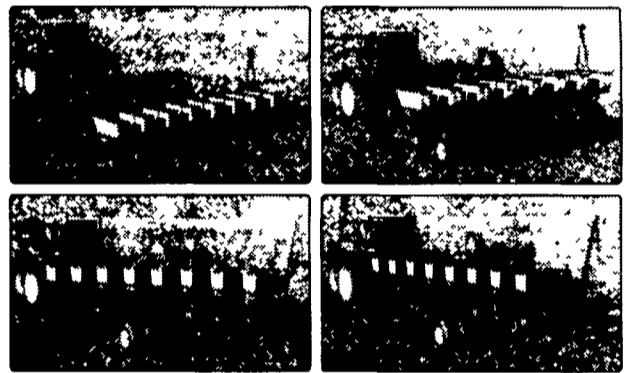


AGCO-WHITE LR20 LIFT & TURN HITCH

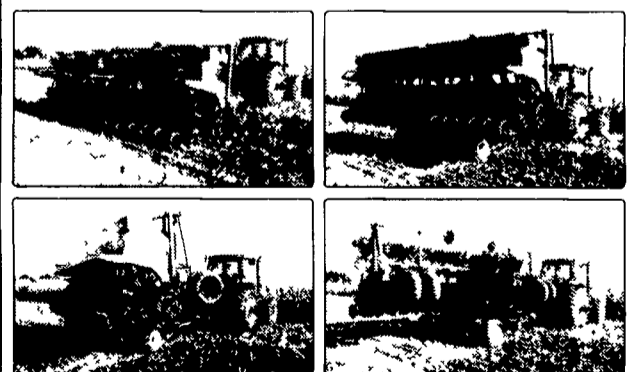
**Some Call Us
Narrow Minded...**

But We Know They Mean It as a Compliment

↓ **AGCO-White LR20 LIFT & TURN HITCH**
 with Case IH 1200 ASM 8-Row Planter



With the needs of Mid-Atlantic Farmers in mind, the new AGCO-White LR-20 Lift & Turn Hitch from Hooper transports 15' & 20' no-till drills at 10' and transports any 4 row, 6 row, 8 row or 12 row corn planter at 10'!



↑ **AGCO-White LR20 LIFT & TURN HITCH**
 with Great Plains 2010P Precision Drill

AGCO-White LR20 LIFT & TURN HITCH

- Hooks to any 3 Pt Hitch
- Fertilizer tanks available for the unit
- Backed by Hooper's parts and service departments

MANITOU MLT 633 TELEHANDLER

Your Silage Solution



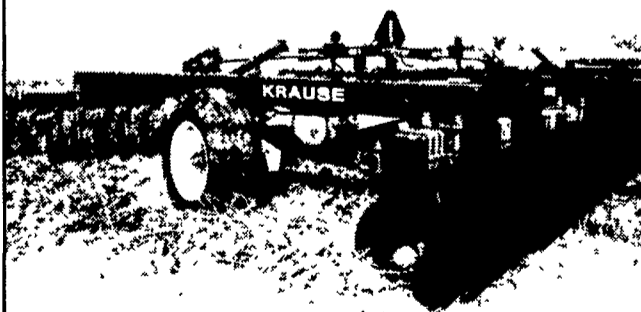
Pictured with a 96" Silage Defacer



- Power and Precision
- Center-Mount Engine Stability
- Air Conditioned
- High-Quality Perkins Engines
- Easy Maintenance
- Excellent Visibility
- Designed Specifically for Agriculture
- Highest Hydraulic Capacities on the Market: Load-Sensing - 38 GPM with 3900 PSI, Excellent for Trench Silage De-Facing
- Shuttle Shift Torque Converter 4-Speed FWD/REV

KRAUSE 7400 ROCKFLEX DISC

**Engineered for the
Way You Farm**



The Krause 7400 cutting disc tackles tough primary tillage or seedbed conditioning with equal perfection.

- Superior Leveling Performance
- The Original "Rockflex" Disc
- Durable & Dependable
- Excellent Resale Value



CASE IH