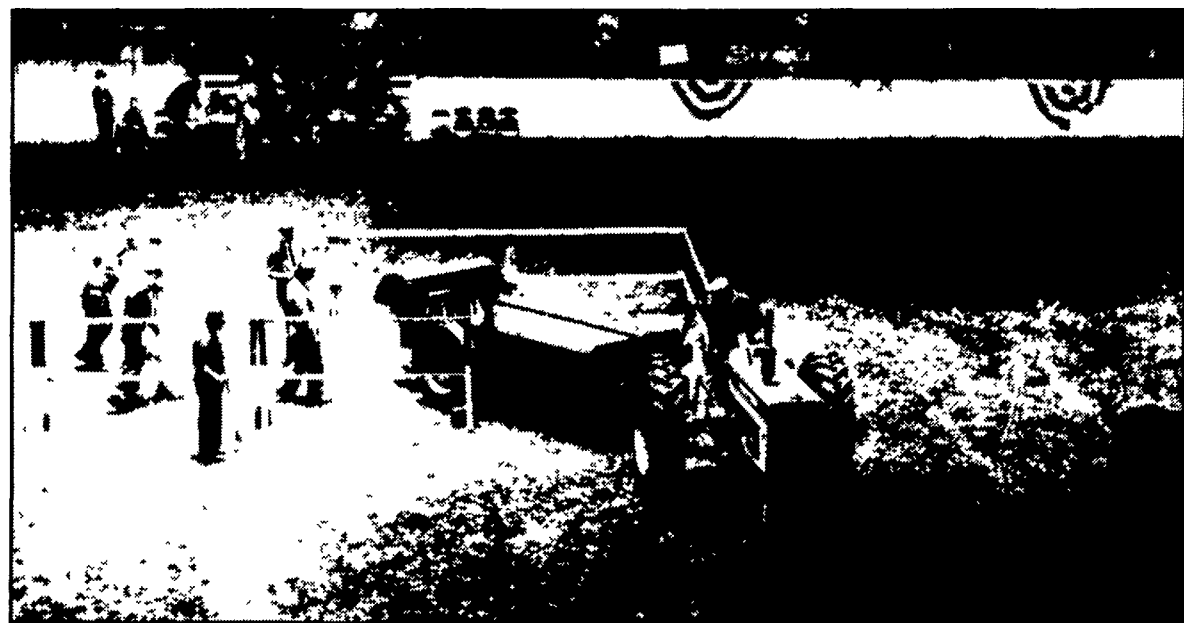


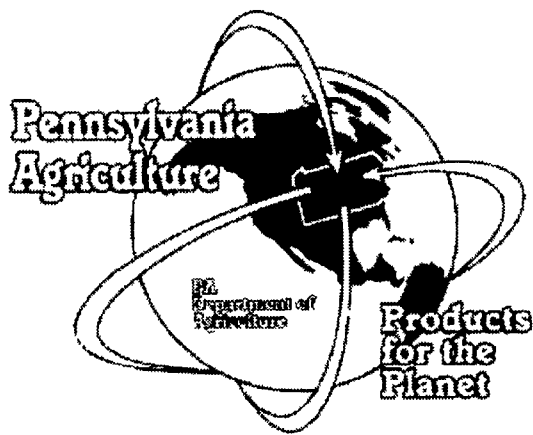
Farm Shows Past

(Continued from Page E28)



4-H lamb and baby beef activities in the Large Arena soon after it was dedicated, sometime in the early 1940s.

The Farm Show hosted a tractor-driving contest to test operator skills in 1962. Courtesy of the Pennsylvania State Archives.



Pennsylvania Crop Insurance Program

The PA Crop Insurance Assistance Program has been extended for crop year 2003. Benefits include:

FREE "CAT" Coverage

**Discounted Premiums & Fees
(Paid for "Buy-Up" Coverage)**

To receive these benefits, contact a crop insurance agent today. List available at www.rma.usda.gov

Enrollment Deadlines:

**January 31 - Adjusted Gross Revenue (AGR)
AGR-Lite**

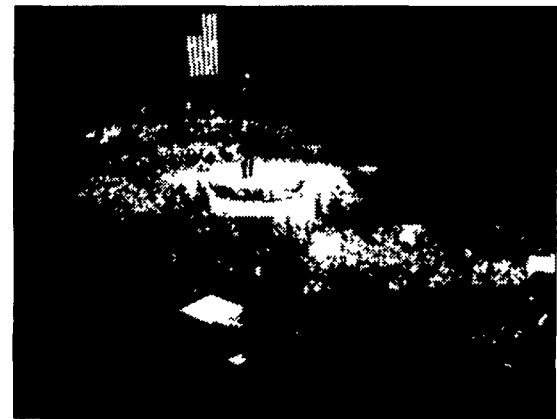
March 15 - Spring Planted Crops

Sam Hayes
Secretary of Agriculture



Pennsylvania encourages growers to have crop insurance protection as part of their farming risk management plan. All policy fees and approximately 20 percent of net premium costs are paid for growers.

Sponsored by the PA Department of Agriculture with cost share support from RMA/USDA.



The Rural Talent Festival was a hit in the 1950s in the Large Arena at Farm Show.

(Turn to Page E30)



**Pennsylvania
Farm Show
2003**

January 11 - 18, 2003



**The Source of
Quality Farm Seeds
For All Your
Crop Requirements**

Garst
Rohrer Brand
Soybeans



Visit us at the
Keystone Farm Show
January 7, 8, 9, 2003
Booth #E603

P. L. ROHRER & BRO., INC.

Smoketown, PA PHONE 717-299-2571
HOURS: Monday-Friday 8:00 AM-5:00 PM
Closed Saturday