

7511 Allentown Blvd.
Harrisburg, PA 17112

75 TRUCKS IN STOCK

AFFORDABLE CARS AND TRUCKS, INC.

"You Gotta Believe!!"

New Exit #72A, Rt. 81 N; Rt. 22 East of Harrisburg; 3 Miles North of Hershey Park

717-652-1925
FAX 717-652-4888
www.autotrader.com/view/affordable car and truck

92 FORD F250 XLT 4x4

Ext. Longbed, 7.3 International DSL, AT, AC, PW, PDL, Stereo, New Radials + Flawless Looking + Driving Truck, 150K
Sale \$8,995

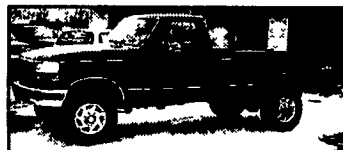


94 FORD F250 XLT

4x4 Ext Cab Long Bed, 7.3 International Turbo Dsl, AT, PS, PB, AC, Tilt, Cruise, Tow Setup & More, 99,000 Mi., Very Well Cared for Truck!
\$12,995



89 FORD F150 XL 4X4
V8 302, 5-Speed, 8' Bed, Very Clean Truck, 1-Owner, 100,000 mi
\$3,995



94 FORD F250 XLT 4X4
H D 8600 GVW's, Longbed, 5.8 V8, 5 Speed, AC, PW, PDL, Stereo, Cruise & More, Only 90K, Looks & Drives Perfect!
\$7,995



97 DODGE RAM 2500 4x4
LARAMIE SLT Ext Longbed, Cummins Turbo, AT, AC, PW, PDL, Tilt, Cruise, Stereo, CD/Cassette, Only 80,000 Mi., Navy Blue & Immaculate, Nicest One I Ever Sold Here At Affordable
\$18,500



94 CHEV. 1500 SUBURBAN SILVERADO 4X4
V8, 350, 3rd Seat, Barn Doors, AT, Dual AC & Full Power, All Black & Very Clean! 100,000 Mi
\$9,995



94 FORD E-250 ECONOLINE WORK VAN
5.8 351 V8 Motor, AT, AC, PS, PB, Very Clean Van, Excellent Condition
\$5,995



94 FORD F350 XLT 4X4 TURBO
Dsl, International Motor, 5 Speed, AC, PW, Pdl Cruise, Tilt, 9000 GVW, Extra Clean Truck Only 90,000 Miles, Must See!
\$12,500



88 FORD F250 4X4 XL PICKUP
5.8 AT, AC, Clean Solid & Good "Running Truck", 100,000 Mi., This Is A First Come, First Own Basis Special This Week
\$2,500



00 FORD F350 XLT 4X4
Super Duty Quad Cab, Dually 1-Ton, 6 Speed, Powerstroke Dsl, 100,000 Mi., AC, PW, PDL, Cruise, Tilt, Stereo, Alloys & Much More Highly Desired Pulling Machine, Looks & Drives Like New!
\$21,995



95 CHEV 2500 H.D. 4X4
Ext, Longbed, 8800 GVW, 350 V8, AT, AC, PW, Pdl, Stereo, Cruise & Tilt, only 80,000 miles, Like New!
Dk Blue
\$11,500.



97 FORD 150 XLT 4X4
V8, AT, AC, PW, PDL, Tilt, Cruise, Alloys, This Is A Super Clean Truck, Mint Condition, 1-Owner, Highway Driven Truck, You Won't Believe Your Eyes! 140 K
\$8,495



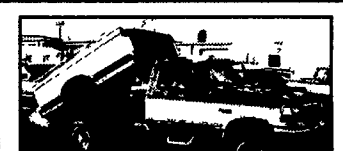
96 FORD F250 XLT 4x4 H.D.
8600 GVW, 460 V8, AT, AC, PW, Pdl, Cruise, Tilt, All Black & Sharp, Like New Cond! 100,000 mi
\$9,995.



88 FORD F150 XLT EXT CAB 4X4
Longbed V8, AT, AC, PW, PDL, Cruise & Tilt, Very Beautiful, Truck Around 70,000 Miles, Must See & Drive.
\$5,495



97 CHEV. 1500 SILVERADO 4x4 EXT.
Shortbed, 100,000 Mi., Vortec 350 V8, AT, AC, PW, PDL, Leather Interior & Superb Shape Wholesale Priced!
\$10,995 Firm



94 FORD F250 XLT 4X4
H D 8600 GVW PU w/Hydraulic Dump Bed - 5.8 351 V8 Motor, AT, AC, PS, PB, Cruise, Tilt, Cloth & More, Nice Truck & Very Well Kept Mint Condition 100,000 Mi
\$10,500



98 DODGE RAM 2500 4X4
Laramie SLT, Longbed, 8600 GVW, Cummins Turbo Dsl, AT, AC, PW, PDL, Cruise & Tilt w/Towing Gear, Only 102K, Looks & Drives Like A New One!
\$13,995



96 GMC YUKON SLT 4x4
Vortec 350 V8, AT, Dual AC, All Power, Barn Doors, Very Sharp And Clean Vehicle 90K
\$9,995



96 TOYOTA LANDCRUISER 4X4
6 Cyl, AT, AC, PW, Sunroof, All Black & Leather Seats, Rear A/C, 3rd Seat, 90K
\$15,500



94 CHEVY 1500 EXT 4X4 SHORTBOX
V8, 350 AT, AC, PW, Pdl, Stereo, Tilt, Cruise & More, Very Clean Truck, 150K All Serviced By 1 Owner, Nicely Cared For Truck!
\$7,995



97 FORD F250 XLT 4X4
Ext Longbed, H O 8800 GVW, 5.8, AT, AC, PW, PDL, Tilt, Cruise, Stereo & More, 108K, Like New Condition
\$11,995



89 FORD F150 XLT 4X4
Ext Cab, V8, AT, AC, PW, PDL, New Tires, Leer Cap, 100K, Like New Condition, Must See!
\$4,500



85 CHEV. 1500 SILVERADO 4x4,
350 V8, No Rust, AT, AC, PW + More, Looks Like New, 100,000 Mi.,
\$4,500

LESHER SALES & SERVICE
2700 Cumberland St. Lebanon, Pa. (Route 422 West)
717-273-4535
website:www.leshermacksales.com

New Trucks

- (1) 2003 Granite AI-427, Engine, 10-Spd.-8 LL Fuller Trans., 18 Ft., 44 Rear Axles
- (1) 2003 Granite with Mobile Mixer. Call For Details
- (1) 2003 CH613 Day Cab, E7-427, 10-Spd., Air Susp., 169 W.B.
- (1) 2003 CH613 Day Cab, E7-427, 10 Spd., Air Susp., 163 W.B.



Used Trucks

- (1) 1994 CH613, Day Cab
- (1) 1995 CH613, 42 in. Highrise

Many other Trucks in Stock - Call for Details

LANCHESTER TRAILER SUPPLY 717-768-0663
www.lanchestertrailer.com



Deckover Trailers
102' x 20' \$3,995.00
8' x 17' \$3,695.00

Tilt Trailer \$999.00
6' x 10'

Full Service Facility • State Inspection Aluminum Welding & Fabrication



We stock a full line of trailer parts & accessories. Same day shipping on all in stock items. *We now carry truck accessories too.

LanChester Trailer Supply, LLC
717-768-0663

3220 East Gordon Rd. Gordonville, PA www.lanchestertrailer.com 6:15 AM - 5:00 PM M-F 8:00 AM - 1 PM Sat.

LEFEVER BROS. CHEVROLET CHEVY TRUCKS GEO.

YOUR DIRECT LINE TO GENUINE GM PARTS

1-800-533-3837

When you call the number listed above, you'll reach our wholesale parts specialists, who can help you keep your GM repair work moving quickly.

- Ask about:
- Specializing in GM Medium Duty Trucks, Current and Obsolete.
 - \$500,000 Parts Inventory.
 - Parts Locator for Those Hard to Find Items.
 - We Ship Anywhere, Local Delivery Available.
 - Experienced, Knowledgeable Personnel.

Mon, Tues, Thurs, Fri
7.30 a.m - 4.30 p.m
Weds 7.30 a.m - 8.30 p.m
Major Credit Cards Accepted

717-432-9697

Quality Dealer Since 1921
406 U.S. Rt. 15, Dillsburg, PA 17019

GM Parts THE FEELING IS GENUINE

