

Winchester Weekly Feeder Cattle

Richmond, Va.
December 31, 2002

Report Supplied by USDA

WEEKLY AUCTION at Winchester, Dec. 30 — FEEDER CATTLE: 570 head. Prices per cwt., based on in weights.

FEEDER STEERS: 142 head. Med./Lge. 1: 300-400 lb 83.50; 400-500 lb 87-89.50; 500-600 lb 71-78.50; 600-700 lb 75.25-77.25; 700-800 lb 75-78.50; 800-900 lb 72.50-74.00; 900-1000 lb 68.50. Med./Lge. 2: 400-500 lb 80.50-86.50; 500-600 lb 63-74.50; 600-700 lb 67-72.00.

HOLSTEIN STEERS: 4 head. Med./Lge. 2: 200-300 lb 49.30.

FEEDER HEIFERS: 226 head. Med./Lge. 1: 200-300 lb 91.00; 300-400 lb 70-80.00; 400-500 lb 72-77.00; 500-600 lb 68-76.50; 600-700 lb 66-71.50; 700-800 lb 67-69.00; 800-900 lb 69-70.00. Med./Lge. 2: 300-400 lb 65-69.50; 400-500 lb 65-71.00; 500-600 lb 58-68.00; 600-700 lb 58-63.00; 800-900 lb 60.00.

BULLS: 202 head. Med./Lge. 1: 200-300 lb 90-99.00; 300-400 lb 81.50-85.25; 400-500 lb 75.50-86.00; 500-600 lb 67.50-80.00; 600-700 lb 61-69.25; 700-900 lb 59.50-63.50. Med./Lge. 2: 200-300 lb 84-87.00; 300-400 lb 64.50-75.00; 400-500 lb 70-72.00; 500-600 lb 60-65.50; 600-700 lb 54-60.50; 700-900 lb 49.50-50.00.

Pa. Weekly

14 Livestock Auctions
Friday, December 27, 2002
Report Supplied By PDA

6 LIVESTOCK AUCTIONS.

CATTLE 1876...Compared with 5606 head last week and 2106 head a year ago. Beef type steers 1.25 to 1.75 higher, Holstein steers uneven, heifers 1.00 to 2.00 higher, cows steady, bulls steady.

STEERS: High Choice and Prime 2-4 74.50-75.75, Choice 1-3 69.50-72.75, Select and Low Choice 2-3 70.00-73.00, Select 1-3 67.00-71.25, Standard 1-2 63.00-67.75.

HOLSTEIN STEERS: Choice 2-3 54.25-57.25, Select 1-2 52.00-53.25, Standard 1-2 40.75-46.00.

HEIFERS: Choice few Prime 2-4 68.25-73.50, Select 1-3 64.00-67.25.

COWS: Breakers 75-80% lean 37.00-44.75, Boners 80-85% lean 32.50-39.00, Lean 85-90% 28.00-36.75. Shells 27.75 and down.

BULLS: Yield Grade 1 1000-2500 lbs 43.50-51.50, Yield Grade 2 900-2400 lbs 38.00-42.75.

FEEDER CATTLE: STEERS: Medium and Large 1 300-500 lbs 68.00-77.00, Medium and Large 2 300-500 lbs

62.00-63.00; HEIFERS: Medium and Large 1 300-500 lbs 57.00-60.00, 500-700 lbs 54.00-61.00, Medium and Large 2 300-500 lbs 52.00-63.00; BULLS: Medium and Large 1 300-500 lbs 59.00-78.00.

CALVES 1782...Compared with 3424 head last week and 2229 head a year ago. Vealers 3.00 to 7.00 higher.

VEALERS: Standard and Good 70-120 lbs 30.00-47.00, Utility 60-120 lbs 10.00-30.00.

FARM CALVES: Holstein bull calves mostly 10.00 to 15.00 higher, with late sales sharply higher, Holstein heifers firm...No 1 Holstein bulls 80-125 lbs 90.00-132.50 with late sales to 155.00, No 2 80-120 lbs 55.00-117.50 with late sales to 130.00; No 1 Holstein heifers 85-120 lbs 275.00-435.00, No 2 80-110 lbs 110.00-265.00.

Beef type bulls and heifers 70-115 lbs 70.00-160.00.

HOGS 587...Compared with 1164 head last week and 46 head a year ago. Barrows and gilts 1.00 lower, sows 1.00 to 1.50 lower. BARROWS AND GILTS: 49-54% lean 220-270 lbs 31.00-34.25, 45-50% lean 220-275 lbs 29.00-31.75, 40-45% lean 240-300 lbs 27.25-30.00.

SOWS: 1-3 300-500 lbs 18.00-26.00, 500-700 lbs 24.00-27.75.

BOARS: 5.00-6.00.

FEEDER PIGS 28...Compared with 457 head last week and 0 head a year ago. US 1-3 30-50 lbs 5.00-10.00 per head.

SHEEP 469...Compared with 3582 head last week and 1043 head a year ago. Slaughter lambs steady to firm. SLAUGHTER LAMBS: Choice 40-50 lbs 100.00-167.00, 50-70 lbs 90.00-150.00, 80-100 lbs 90.00-116.00. SLAUGHTER SHEEP: 15.00-42.50.

NO GRADED FEEDER PIG SALES...Compared with 3392 head last week and 740 head a year ago.

Midwest Daily Livestock Summary

Amarillo, Texas

December 30, 2002

Report Supplied By USDA

Five area direct trade for live and dressed sales was not adequately tested to establish a market trend. LIVE STEERS: 35-65 percent Choice 73.00. DRESSED STEERS: 65-80 percent Choice 115.00. LIVE HEIFERS: 35-65 percent Choice 74.00. DRESSED HEIFERS: Not enough sales reported.

Terminal Markets: South St. Paul terminal market slaughter steers and heifers mostly steady. Steers: Choice 2-4 1041-1472 lbs 70.00-72.00, few pkgs 1129-1230 lbs 72.30- 73.00; Select and Choice 2-3 1150-1395 lbs 68.00-70.00. Heifers: Choice 2-3 pkg 1278 lbs 70.85; Select and Choice 2-3 1208-1378 lbs 68.50-69.60.

Cattle slaughter under federal inspection on Monday is estimated at 131,000 head compared to 132,000 a week ago and 87,000 a year ago.

CME Futures Closes for Live Cattle: December 75.55, up 50; February 78.72, unchanged; April 78.02, up 20.

Slaughter Cows at So. St. Paul sold steady to firm. Breakers 70-80 percent lean over 1100 lbs 38.00-41.75 high dressing 41.75-42.25. Boners 80-85 percent lean over 1050 lbs 36.00-39.00 high dressing 39.00-41.00. Lean 86-90 percent lean over 1100 lbs 33.00-36.00.

Due to the holiday week most feeder cattle and calf auctions are closed. Futures Closes for Feeder Cattle: January 83.27, down 10; March 81.60, up 2; April 81.10, down 10.

Barrows and gilts at Sioux Falls closed 2.00 lower. Barrows and gilts 49-51 percent lean 220-270 lbs 31.00. Barrows and gilts in South St. Paul closed 1.50 lower. Barrows and gilts 47-50 percent lean 220-270 lbs 29.50-30.00. The direct trade prices are based on 185 lbs hog carcass with 0.9-1.1 inch backfat and 6-inch square loin/2.0 inch depth plant delivered. National direct trade closed steady at 36.50-44.23, weighted average 41.34. Iowa-So. Minnesota direct traded weak to .50 lower at 36.50-44.23, weighted average 41.03. The Western Cornbelt closed steady at 36.50-44.23, weighted average 41.22. The Eastern Cornbelt sold .50 higher at 36.50-44.00, weighted average 41.51.

Hog slaughter under federal inspection

on Monday is estimated at 394,000 head compared to 397,000 a week ago and 296,000 a year ago.

CME Future Closes for Lean Hogs: February 53.55, up 05; April 59.72, down 07; May 63.85, up 22.

Slaughter lambs at Sioux Falls, SD closed steady on a thin test. Shorn slaughter lambs: Choice, end Prime 2-4 No 1-2 pelts 138 lbs 84.25. Woolled slaughter lambs: Choice, end Prime 2-3 132-141 lbs 84.25-85.25, 125 lbs 82.75. At South St. Paul, MN markets closed steady weak. Slaughter lambs: Shorn: Choice, end Prime 2-3 125-145 lbs 81.00-83.00. Woolled: Choice, end Prime 2-3 110-125 lbs 76.00-79.00; 125-145 lbs 79.00-81.00.

Sheep and lamb slaughter under federal inspection on Monday is estimated at 11,000 head compared to 10,000 a week ago and 9,000 a year ago.

National Feeder Cattle Weekly Review

St. Joseph, Mo.

December 27, 2002

Report Supplied By USDA

NATIONAL FEEDER & STOCKER Summary for week ending Dec. 27, 2002. Total Receipts: 0, last week 345,400.

Christmas celebrations took precedence over marketings of feeder cattle and calves this week and no price trend established. A bright light appeared on the surface for nearby marketings. The direct feedlot trade up to 74.00, over 10.00 higher than the close of last year. This was with beef production for the year up 3 percent. Late in the week boxed beef cut-outs up to 124.50. Packers still had a profit margin even with holiday overtime pay. Therefore they kept pushing for numbers to keep the chains rolling. Also they were looking at the February Futures near 79.00, even though futures turned sharply lower before the close. Current slaughter cattle prices and nearby futures putting a smile on the face of cattle owners. However, the future has some dark clouds on the horizon, especially for the feeder market. April futures closed near 78.00 but everything farther out down below 72.00. In other words anything not ready for slaughter within the next four months in a different time zone. On the other hand feeder cattle futures for all of next year in a narrow spread of 81.00-84.00. Look for the usual seasonal big January runs of feeders. This time a year ago Oklahoma City had 500 lbs steers calves around 1.00 a pound and 800 lbs feeder steers around 84.00. Beginning early January of 2001 prices dropped precipitously until early May. The CME index lost 10.00 during this period. Prices recovered slowly but steadily and climbed back up near 2001 close by December. No matter what the futures indicate or pencil out, most operators have little choice and must conduct business as usual and try to stay afloat, be they cattle calf operators, grazers, back-grounders, or feedlot operators.

USDA hopes that next year everyone will enjoy happiness, good health and prosperity

★ **STAR SILOS** ★

(Eastern Division of SOLLENBERGER SILOS CORP.)

HAS MOVED TO CORPORATE HEADQUARTERS AT:

2294 MOLLY PITCHER HIGHWAY
CHAMBERSBURG, PA 17201



FOR PARTS AND SERVICE CALL:
1-800-909-6909

ALSO: CALL THIS NUMBER FOR:
SILO UNLOADERS, MIXERS, MANURE TANKS,
BUNKER PANELS AND POURED CONCRETE SILOS.
(or, call Ken Mansfield at 610-488-7028)

IF YOU CALL AFTER HOURS, LEAVE A MESSAGE
FOR RANDY GAYMAN AT:
717-262-2908

C&M Farm Services Inc.

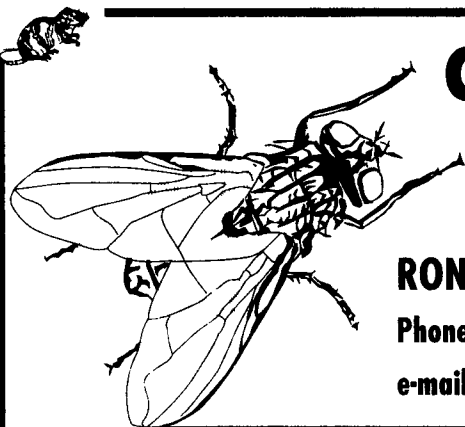
Elizabethtown • Pennsylvania

"Unique Farm Services"

RONI CLARK • Licensed & Insured

Phone: 717 • 361 • 6065 • Fax: 717 • 367 • 2347

e-mail: roni.clark@prodigy.net



Take advantage of these products for the most complete pest control possible. Whether your need is to control pests, eliminate harmful bacteria, or encourage beneficial insects, we have the tools to help you.

JAGUAR PELLETS	12 lb. pail	\$35
RAMPAGE PLACE PACKS	100 count	\$75
HAWK BLOX	18 lb. pail/block	\$53.50
ZP TRACKING POWDER	25 lb. pail	\$102
DITREX TRACKING POWDER	25 lb. pail	\$90
AVITROL BAIT - for bird control	5 lb. pail	Call for pricing
BP 300 - 3% Pyrethrine	1 gal. container	\$87
PYRI-SHIELD	120 oz.	\$225
TOMCAT	10 lb. pail/loose	\$40
QUICK BAYT	45 lb. pail	\$145

NEW

GOLD & SILVER WATCH

DOES THE CURRENT STOCK MARKET FIASCO GOT YOU DOWN? HAVE YOU THOUGHT LATELY ABOUT ALTERNATIVE INVESTMENTS? YOU MIGHT HAVE BEEN WAITING FOR THIS OPPORTUNITY TO DIVERSIFY YOUR INVESTMENT PORTFOLIO. NOT MANY COMMODITIES OR STOCKS HAVE THE GLOBAL APPEAL AND VALUE LIKE GOLD AND SILVER. NATIONS THROUGHOUT THE WORLD USE THESE METALS AS A STORE OF WEALTH.

LEHIGH VALLEY FUTURES, INC.

HAS THE KNOWLEDGE AND EXPERTISE TO ASSIST YOU IN THESE INVESTMENTS. IN ADDITION TO GOLD AND SILVER, LEHIGH VALLEY FUTURES, INC THROUGH ITS FCM TRADES ON ALL MAJOR FUTURES EXCHANGES, FUTURES HAVE BEEN OUR ONLY BUSINESS FOR 30 YEARS.

FOR INFORMATION, CONTRACT DETAILS AND FUTURES AND OPTIONS STRATEGIES
PHONE (610) 577-0002 OR 800-543-8939

LEHIGH VALLEY FUTURES INC.

410 Bridge Street
Weissport, PA 18235
e-mail: greg@lvfutures.com
bryan@lvfutures.com

The risk of loss in trading futures and options can be substantial. Futures and options trading may not be suitable for everyone. You should carefully consider the risks in light of your financial condition in deciding whether to trade.