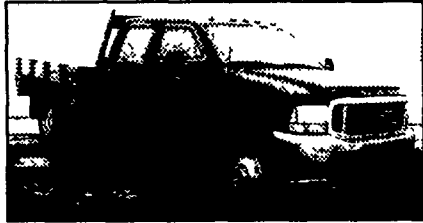


1982 Chevy, 366. Recently Overhauled. 1600 Gal 2 Compartment, Stainless Steel Tank. Almost New Tires. PTO System

**Gro-Mor Plant Food Co.**  
Leola, PA  
717-656-4166

**USED TRUCKS**



**2000 FORD F350 CREW CAB DUALLY**  
8 ft. Flat Bed, Power Stroke Diesel, 4x4, XLT, 6-Spd., A/C, Most Options, 12,500 GVW, 103K Miles, Dk. Green  
\$22,500

**2001 CHEV. 3500 SILVERADO 12' DUMP 4X4**, Duramax Turbo Diesel, Allison AT, A/C, PS, PB, 23K, White, 12,000 GVW  
\$30,500

**2001 DODGE DAKOTA QUAD CAB SLT**, V6, AT, A/C, Most Options, 83K Miles, Maroon  
\$13,500

**1998 DODGE RAM 2500 4x4**, 12 Valve Diesel, AT, A/C, C, 93K Miles, Red  
\$17,900

**1997 DODGE RAM 3500 4x4**, 9' Flat Bed, Cummins Turbo Diesel, AT, A/C PS PB, 88K Miles White, 11 000 GVW  
\$17,900

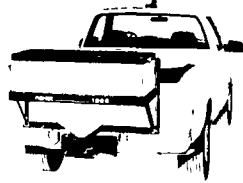
**1997 DODGE RAM 2500 CLUB CAB 4X4 SLT LARAMIE**, Cummins Turbo Diesel, 5-Spd., A/C, Most Options 8 Ft Bed, 94K Miles, Met Green & Silver  
\$19,900

**2001 OLDSMOBILE SILHOUETTE**, 6cyl AT A/C, most options, 24K Miles, Black  
\$16,900

**1994 OLDSMOBILE 88 4 Door Sedan**, AT, A/C, Most Options, Leather, Traction Control, 70K Miles, Black  
\$5,500

**SCHAEFFERTOWN AUTO & TRUCK SALES**  
RT. 501, 1-1/2 miles South of Schaefferstown  
717-949-2812

**MORTIZ 25' Gooseneck flat trailer**  
20,000 GVW, 2000 Model Like New  
\*814-766-2102\*



**Fisher Model 1000 Salt Spreader**

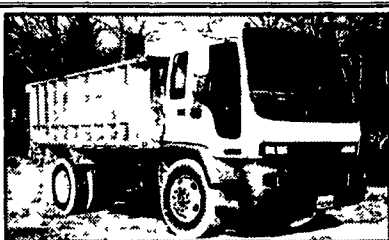
The FISHER® Model 1000 low profile, economy tailgate spreader has the features and capacity of many higher-priced spreaders:

- 8 cu. ft. capacity poly hopper
- 12V DC motor mounted in sealed housing
- Steel auger and agitator

Call us today!



**E.M. Kutz, Inc. Truck Equipment Sales & Service**  
1-800-974-9779



**FOR SALE**

**2002 GMC T6500, 72 L. Cat Diesel** - Allison Auto Trans., 8,800 miles, Michelin 11 R x 22.5 tires, 25950 GVWR New Inspection, Eby Aluminum 14 ft Dump Body w/optional cattle racks Eby frame mount utility box - 4 way tailgate, Receiver hitch and electric brakes  
**Asking \$40,900**

Call 484/614-5140 and leave message



**FOR SALE**

**VGM 20 ft. Dump trailer** 20 ton capacity w/additional 4 ft. sides extensions hydraulic brakes and end gate never used, floatation tires follow your combine or harvester thru difficult field conditions for a quicker harvest  
**\$18,500**

**Woodcrest Motors**  
SPECIALIZING IN TRUCKS & VANS  
1200 North Reading Rd., (Rt. 272) Stevens, (Lancaster Co.) PA 17578  
717-336-3130

 <b>95 CHEV. SILVERADO</b> 1500 Ext. Cab, 3-Dr., LT, 4x4, 5.3 V8, AT, A/C, Most Options, 98,000 Miles, Light Gold <b>\$16,500</b>	 <b>01 FORD F150 XLT 4-Door</b> Extend Cab, V6, AT, A/C, Most Options, DK Green, 76,000 Miles <b>\$11,995</b>	 <b>98 CHEV. CHEYENNE</b> 2500 2WD, 5.7 V8, AT, A/C, C T Cass., Utility Boxes & Ladder Rack, 64,000 Miles White <b>\$9,995</b>
 <b>95 CHEV. SILVERADO</b> 2500 Extend Cab 4x4 6.5 Turbo Diesel AT, A/C Most Options, 88,000 Miles Maroon & Tan <b>\$12,800</b>	 <b>99 CHEV. SILVERADO</b> 1500 Extend Cab 3 Door 4x4 V-8, 5 Spd A/C 98 000 Miles Gold <b>\$13,995</b>	 <b>98 CHEV. SILVERADO</b> 2500 Extend Cab, 4X4 V8 AT A/C, Most Options 8 600 GVW, 76,000 Miles Black & Gold <b>\$15,500</b>

**CUSTOMER SERVICE IS #1**

Trailer Financing Available or

**ALL PRO** Products Inc.  
West Shore East Shore

**Truck & Trailer Parts & Accessories**  
Distributor

7760 Allentown Blvd Harrisburg 717-671-9115  
6250 Carlisle Pike Mechanicsburg 717-795-9166  
Parts/Orders Only 800-622-7003

**A.R.E. TRUCK CAP & LIDS • TRUCK ACCESSORIES**

\$1,695 w/this ad - 60000 lb./5 Cubic Yards w/Remote Control

**PEQUEA** **CAR-NATE** CUSTOM BUILT TRAILERS

7' Wide Dump 6' Wide Low Profile Dump Low Profile Ramp System

**EZ Dumper** 610 UDT EZ-610DXLP EZ-508HD EZ-712DX EZ-6100X

**DRAW TITE HITCH & TOWING PRODUCTS**

**THE HONDRU EXPERIENCE**

OVER 200 TRUCKS AVAILABLE FROM OUR 4 DEALERSHIPS

<b>E-TOWN CHEVROLET</b> Oldsmobile Pontiac Route 230 E-Town • 717-361-7776 877-924-6644 <b>2001 DODGE RAM 2500 SLT PLUS PKG.</b>  4x4, Auto, Diesel, Quad Cab, Leather	<b>PHILLIPS FORD</b> Route 72 Manheim • 717-665-3551 877-597-3551 <b>1999 FORD E350 CUBE VAN</b>  V-8, Auto, AC Equipped Walk thru, Dual Wheels
<b>99 DODGE RAM 1500</b>  4x4 Sport V-8 Magnum, 5-Speed	<b>2001 FORD SUPER (NEW), XLT</b>  4x4, V-8, Auto, AC Equipped 30,000 Miles
<b>E-TOWN DODGE</b> Route 230 E-Town • 717-367-6644 877-924-6644 <b>2001 CHEVY TAHOE LT</b>  V-8, Auto Leather, Sun Roof, Heated Seats	<b>MANHEIM CHRYSLER GMC</b> Route 72 Manheim • 717-665-2473 877-603-2473 <b>02 GMC ENVOY SLT</b> 2F142B <b>\$29,495</b> 

	LIST	SALE
99 Dodge Durango SLT Auto, V-8, AC, PW&L, T&C		
00 Dodge Dakota Club Cab 4x4's		
02 Dodge Ram Quad cab, 4x4, Sport, V-8, Auto, AC, PW & L, C&T		
01 Dodge Ram 1500 Quad Cab, 4x4, V-8, Auto, AC, PW&L, T&C - Off Rd Package		
00 Dodge Ram 3500, Diesel, Quad, 4x4, 6 speed		
02 Durango SXT, 3,000 Miles, V-8, Auto, 4x4		
00 GMC Yukon SLT, sunroof, #3G108A	\$27,995	\$25,900
97 Ford Truck Expedition, 2G330C	\$16,995	\$14,495
00 GMC Jimmy SLE 4x4, 2M047A	\$18,495	\$15,995
97 Chevrolet K1500 4x4 Ext Cab	\$14,995	\$12,995
98 Toyota Tacoma, 4x4, Reg Cab.	\$12,495	\$9,995

All prices Include Rebates, Exclude Tax, Tag and \$55 Dock Fee

**LOADS OF USED PICKUPS CALL ANY STORE FOR DETAILS**  
Visit us @ [www.hondruauto.com](http://www.hondruauto.com)

OVER 10 CHASSIS IMMEDIATELY AVAILABLE FOR BODY INSTALLATION AT OUR LOCAL BODY COMPANIES!

SALT SPREADERS • SNOW PLOWS • BEDLINERS