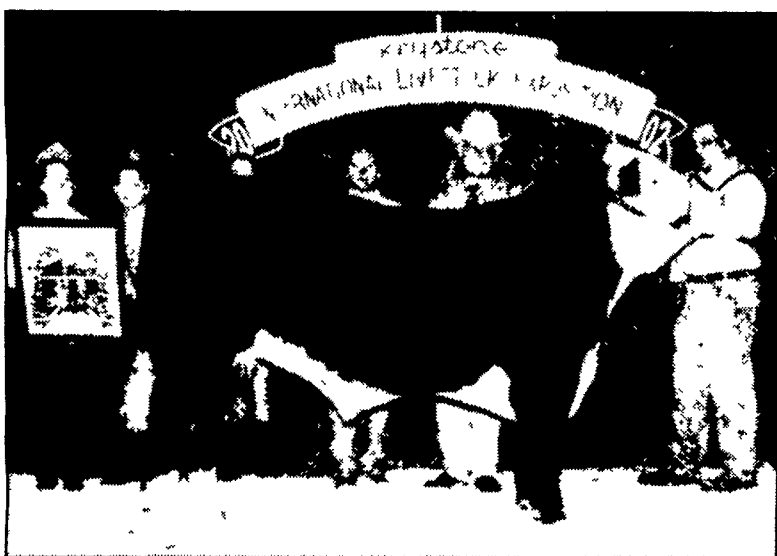


# Eastern Regional Hereford Classic Show At KILE



Joe Detweiler, Salesville, Ohio, exhibited the champion Hereford heifer in the open breeding show.



Cara Stockdale, Dayton, exhibited the grand champion bull in the open breeding cattle show.

## Pa. Grange Objects To New Over-Order Premium

HARRISBURG (Dauphin Co.) — The lowering of the over-order milk premium in the new year will create further hardship for Pennsylvania dairy farmers, according to a statement released by the Pennsylvania State Grange.

Arthur Zug, a dairy farmer from Juniata County representing the Grange, had testified Nov. 6 before the Pennsylvania Milk Marketing Board (PMMB) recommending that the \$1.65 per hundredweight over-order premium be extended for at least a six-month period.

The over-order premium is the amount paid to Pennsylvania dairy farmers above the federally mandated price for Class I (fluid) milk produced, processed, and sold in Pennsylvania.

On Dec. 4, the PMMB issued a general order which reduces the present \$1.65 per hundredweight over-order premium to \$1.50 for January, \$1.40 for February, \$1.30 for March and \$1.25 for April through June 30.

The PMMB stated that the decision to incrementally reduce the premium was made in order to prevent Pennsylvania milk pro-

cessors from looking to other states for cheaper milk.

In recommending the \$1.65 over-order premium extension, Zug had told the board: "Economists continue to tell us the market for milk remains tight in Pennsylvania. In fact, according to the Pennsylvania Agricultural Statistics Service, milk production was down 0.8 percent from last year's September production."

Zug said that the total number of milk cows in the state has decreased by 9,000 head from September 2001. Dairy farmers are in financial trouble, he said. Not only are they contending with low milk prices, but the recent drought conditions have taken a toll on the dairy industry causing up to 50 percent yield loss in the past two years.

Dairywomen would like a fair price for their product, instead of programs to support price levels.

"Art and dairy farmers alike must be given the opportunity to receive a fair price for their product," said Brenda Shambaugh, legislative director for the Pennsylvania State Grange.

## Cornell Offers Sheep-Shearing Schools

HARFORD, N.Y. — Two sheep-shearing schools will be conducted in 2003 at the Cornell Sheep Farm on Slaterville Road off Rt. 38 near Harford, N.Y.

A beginners' shearing school is scheduled for Jan. 25 from 9 a.m. to 3 p.m. This course will be taught by Jim Baldwin, an experienced shearer from Ithaca.

Registration is limited. To register, contact Brian Magee at (607) 844-8367 or by email at bhm5@cornell.edu. The fee is \$25 (cash or check to Jim Baldwin on the day of the school).

A professional shearing school is set for March 8-9 from 8 a.m.

to 5 p.m. Registration is limited and the fee is \$100. This course will be taught by Doug Rathke, an award-winning professional shearer from Hutchinson, Minn. The information taught in the course will include the shearing pattern, blade sharpening techniques, physical fitness, hand-piece maintenance and more.

To register, contact Doug at Liberty Land & Livestock, 61231 Minnesota Highway 7, Hutchinson, MN 55350, by phone at (320) 587-6094 or by e-mail at lambshop@hutchtel.net.

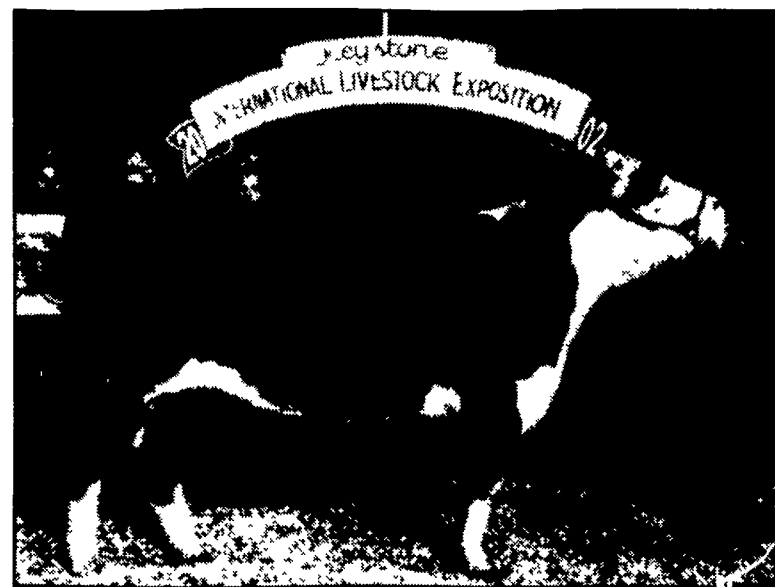
HARRISBURG (Dauphin Co.) — The Hereford breed took center stage at the 46th annual Keystone International Livestock Exposition (KILE) with their Eastern Regional Hereford Classic Show, exhibiting some of the best of the Hereford breed.

Rising to the top of the show was Four-L Hereford Farm hailing from Murfreesboro, Tenn. with the winning of the premier breeder and exhibitor banners.

In the bull classes, the winner of the grand champion rosette was CS Book 'em 37 L owned by Stockdale Farms in Dayton.

Joe Detweiler's junior yearling bull, SSF JJD Shrek 669, was selected as the reserve grand champion. The reserve grand champion winner is from Salesville, Ohio.

Continuing his show success, Joe Detweiler won the grand champion female rosette with JJD Cashmere 662 111. Tiffanie



Brad Seiss, Thurmont, Md., showed the junior champion heifer in the junior breeding cattle show.

Bishop from Shoreham, Vt. rose to the top of the female classes as the winner of the reserve grand

champion female with her winning animal, SMB F1 Limoge 2J 17L.

## Tioga County Farmers Left Behind

MESHOPPEN (Wyoming Co.) — According to reliable reports from Washington, D.C., the USDA in all probability will not honor Tioga County farmers' sincere request to be eligible to receive payments under the Livestock Feed Assistance Program.

Arden Tewksbury, manager of Progressive Agriculture Organization (Pro-Ag), said, "With the severe adverse economic conditions facing most farmers, it's unbelievable the USDA will not release payments to the Tioga County farmers."

All the counties surrounding Tioga were declared eligible for the feeding programs earlier in the fall of 2002.

However, according to Tewksbury, Tioga County farmers were left "holding the bag" when the reports submitted by the Tioga County Farm Service Agency (FSA) officials to the Harrisburg office failed to qualify the Tioga County farmers for drought assistance.

For a county to be eligible for the drought assistance, local officials had to declare at least one major crop to have at least a 30 percent loss before Sept. 19, 2002.

Tewksbury claims that Pro-Ag received calls during July from farmers in Tioga County concerning dry conditions in that area.

The Drought Assistance Program was announced by the U.S. secretary of agriculture on Sept. 19, 2002. However, according to Tewksbury, "there was no grace period given to any state to update their reports to the USDA."

Sixteen U.S. Senators submitted a letter to U.S. Secretary of Agriculture Ann Veneman, urging her to reopen the drought program. In addition, U.S. Senators Arlen Specter and Rick Santorum submitted a letter to the secretary. Other key local and state officials also contacted the secretary.

Pro-Ag can be reached at (570) 833-5776.

## Dairy Feeders School Planned At Mason Dixon Farms

GETTYSBURG (Adams Co.) — Mason Dixon Farms will host a Dairy Feeders School on Tuesday, Jan. 7. The Penn State Cooperative Extension Capital Region Dairy Team is conducting this program to enhance the feeding management skills of dairy farm owners, managers, and their employees. Most of the day's program will be hands-on training activities!

The morning session begins with registration at 9:30 a.m. The program will begin at 10 a.m. During the morning session, Dr. Jud Heinrichs, Penn State dairy and animal science, Dr. Arlen Mills, Capital Region dairy herd health agent and Vinton Smith, Capital Region dairy program coordinator, will discuss using dry matter, visual appraisal, and pH to evaluate silage samples.

Hands-on activities will include procedures to test dry matter and what to look for when visually appraising a forage sample. Calculations to adjust rations using these measurements will be reviewed.

The afternoon program will look at particle size and the effects of mixing time on particle size of finished TMRs. Participants will then tour the bunkers and feeding system at Mason Dixon Farms. Doyle Waybright will discuss the farm's management system and answer questions about the farm operation. An optional tour of Mason Dixon Farms will be conducted at the conclusion of the session.

Directions to Mason Dixon Farms are as follows: Take Rt. 15 south from Gettysburg to the last exit before the Maryland line.

Exit at Steinwehr Avenue and cross the bridge heading east on Steinwehr Avenue. Take an immediate left onto Bullfrog Road. Follow Bullfrog Road 1¼ miles to Mason Dixon Road. Take a left on Mason Dixon Road and go a few hundred yards to the visitor's center located on the right side of Mason Dixon Road.

Cost for the training including program materials and lunch is \$25

participant. The session is limited to the first 25 people who apply. To register for the training, please call the York County Cooperative Extension at (717) 840-7408. You may also fax your registration to (717) 755-5968 or e-mail Vinton Smith at (vsmith@psu.edu). Please register by Jan. 3 so adequate materials may be prepared for the sessions.

## AgrAbility to Exhibit At Farm Expos

STATE COLLEGE (Centre Co.) — AgrAbility for Pennsylvanians, the USDA funded project that provides assistance to farmers and farm family members who are coping with a disability or long-term illness, will be hosting an exhibit at upcoming state agricultural expositions.

Jan. 7-9 producers can find AgrAbility at the Keystone Farm Show in York. At the Keystone, AgrAbility will be sharing space with Penn State Cooperative Extension, at booths 219 and 220.

Jan. 11-18, AgrAbility staff will be found at the Pennsylvania Farm Show in Harrisburg, where they will be located with the Penn State Cooperative Extension Ag Safety and Health exhibit.

AgrAbility for Pennsylvania supports farmers and their families through the combined resources of Penn State Cooperative Extension and Easter Seals of Central Pennsylvania. The project can assist those who are struggling with arthritis, back injury, amputation, chronic pain, head injuries, hearing impairment, heart conditions, stroke, respiratory diseases, visual impairment, and many other health conditions.

Project staff helps by providing on-site assessments of farm operations and identifying the limitations of the prospective client. Staff then recommend farm equipment adaptations, home

modifications, and adaptive equipment. The project refers families to local service providers and funding sources; and can also provide peer and caregiver support from other farm family members with disabilities.

Those interested in learning more about the AgrAbility program are invited to visit the display at either exhibition. To contact AgrAbility for Pennsylvanians, call toll-free within Pennsylvania at (866) 238-4434, or (814) 863-7490. The AgrAbility website may be found at: HYPERLINK "http://AgExtEd.cas.psu.edu/agrabl/" http://AgExtEd.cas.psu.edu/agrabl/.