

FARM CALENDAR

(Continued from Page A10)

County Ag Center, 11 a.m.-1 p.m.

Friday, January 3

Arborist Short Course, Luzerne County Recreation Department, Forty Fort, also Jan. 10, 17, 24, (570) 825-1701.

Franklin County Dairy Day, Kauffman's Community Center, Chambersburg, 9:30 a.m.-2:15 p.m., (717) 263-9226.

Saturday, January 4

Vineyard Establishment and Winemaking Seminar, Linden Vineyards, Linden, Va., 10:30 a.m.-4 p.m., (540) 364-1997.

Sunday, January 5

Monday, January 6

Ice Cream Short Course, Nittany Lion Inn, University Park,

thru Jan. 16, (814) 863-2959. Farm Bill Workshop, Snyder County Extension Office, County Courthouse, 7 p.m.-9 p.m., (570) 837-4252.

Octorara Young Farmers dairy meeting, Vo-Ag Dept. of high school, 7:30 p.m.

Tuesday, January 7

Tilling the Soil of Opportunity, Cayuga County Cooperative Extension, Auburn, N.Y., thru Jan. 8, (315) 787-2622.

Dairy Workshop: Feeders School, Mason-Dixon Farms, Gettysburg, (888) 472-0261.

National Potato Council annual meeting, Loews Ventana Canyon Resort, Tucson, Ariz., thru Jan. 11.

Juice and Wine Analysis Short course, Food Science and Technology Building, Virginia Tech, Blacksburg, Va.

Eastern Pa. Turf

Conference and Trade Show, Valley Forge Convention Center, King of Prussia, thru Jan. 9, (610) 967-4643.

Wednesday, January 8

National No-Till Conference, Indianapolis, Ind., (800) 645-8455.

"Tilling the Soil of Opportunity" for farmers and business owners, first of 12 weeks, every Wednesday, Berks County Ag Center, (610) 378-1327. Gettysburg class Jan. 8 at Adams County Ag Center, Wednesday mornings, (717) 270-4391. Lancaster class meets Monday evening Dec. 2-March 17 at the Farm and Home Center.

Winegrape Growing Class, Montgomery County Cooperative Extension, Collegetown, 6:30 p.m.-8:45 p.m., (610) 489-4315.

Living On A Few Acres Seminar, Montgomery County 4-H Center, Collegetown, Wednesdays Jan. 8-March 12, 6 p.m.-8:45 p.m., (610) 489-4315.

Thursday, January 9

Business Sense II, Training for Dairy DFOs, first session of three. Also Jan. 25 and Feb. 7, Farm and Home Center, Lancaster, (888) 373-7232.

"Keep Farming First," farm

summit for Chester County, Sykes Hall, West Chester University, thru Jan. 10, (610) 696-3180.

Farm Bill Workshop, Lycoming County Extension office, Ag Center, Montoursville, 7 p.m.-9 p.m., (570) 433-3040.

Friday, January 10

Ecological Cut Flower Growing and Marketing Workshop, Ballston Spa, N.Y., thru Jan. 12, (518) 427-6537.

Cornell Regional Sheep and Goat Market Summit at Virginia/North Carolina Shepherd's Symposium, Harrisonburg, Va., (301) 432-2767, ext. 343.

Long Island Agricultural Forum, Suffolk Community College, Riverhead, N.Y., Viticultural Session Jan. 11, 8:30 a.m., (631) 727-7850.

Potato Marketing Forum, Lowe's Ventana Canyon, Tucson, Ariz., 2 p.m.-5 p.m.

South Central Regional Greenhouse meeting, Memorial Park Hall, Martinsburg, 8:30 a.m.-3:30 p.m., (814) 940-5989.

Saturday, January 11

Pennsylvania Farm Show, Farm Show Complex, Harrisburg, thru Jan. 18.

New York Low Input Sustainable Farming Conference, Jordan Hall, Geneva Experiment Sta-

tion. Dauphin County Holstein Association annual meeting, Geo's Family Restaurant, Harrisburg, 11 a.m.

Sunday, January 12

Pennsylvania Angus Association Annual Membership Banquet, Holiday Inn Grantville, 5:30 p.m., (717) 469-0661.

Monday, January 13

New York Grazing Conference Series Jan. 13-18; Jan. 13, Delhi; Jan. 14, Cobleskill; Jan. 15, Cortland; Jan. 16, Belfast; Jan. 17, Carthage; Jan. 18, Clinton County, (607) 753-5213.

Tuesday, January 14

New Jersey Vegetable Growers Association Annual Meeting and Trade Show, Taj Mahal Atlantic City, thru Jan. 16.

Capitol Region/Penn State Extension Introduction to Spreadsheets, Cumberland County Extension office, Carlisle, thru Jan. 15.

Vineyard Technical meeting, Naylor Wine Cellars, Stewartstown, 1 p.m.-4 p.m., (717) 642-5148.

Ohio Regional Agronomy meeting, Community Building, Huron County Fairgrounds, Norwalk, Ohio, (419) 627-7631.

WHAT'S AHEAD FOR CORN, OATS, SOYBEAN AND WHEAT FUTURES AND OPTIONS

Lehigh Valley Futures, Inc. through its clearing FCM, offers access to all major exchanges' Futures and Options.

Serving the Farm Community for more than 30 years

When buying options, your risk is in some cases limited to the premiums paid plus transaction costs.

FOR INFORMATION, CONTRACT DETAILS AND FUTURES AND OPTIONS STRATEGIES...

PHONE (610)577-0002 or 800-543-8939

LEHIGH VALLEY FUTURES INC.

410 Bridge Street
Weissport, PA 18235
e-mail: greg@lvfutures.com
bryen@lvfutures.com

The risk of loss in trading futures and options can be substantial. Futures and options trading may not be suitable for everyone. You should carefully consider the risks in light of your financial condition in deciding whether to trade.

Rogers Community Auction, Inc.

where buyer and seller get together

KEN, BILL BAER AUCTIONEERS

One half mile west of Rogers, Ohio on St Rt 154
330-227-3233

Tri State Area's Largest Open Air Market open every Friday

FREE PARKING • NO ADMISSION FEE

CONSIGNMENT AUCTIONS

Every Friday Furniture & misc 1 p.m.
Produce & Eggs 5 p.m.
Poultry Barn 6 p.m.

FIRST TUESDAY OF EACH MONTH

FARM EQUIPMENT CONSIGNMENT AUCTION

3 p.m. Miscellaneous auction
4 p.m. Garden tractor auction
5 p.m. Firewood
6 p.m. Farm Machinery

EVERY Wednesday 1 p.m. Hay & Grain Auction

FAMILY OWNED AND MANAGED SINCE 1955



**A "New Year" will soon be here!
A clean sheet - another fresh start.
As we pause to reflect upon the past year we say "Thank-you" to our customers for the business you have given us. It has been a privilege to serve each one. Our wish is that you experience a "BLESSED NEW YEAR"**

SCHNUPP'S GRAIN ROASTING, INC.
416 Union Rd. Lebanon, PA 17046
1-800-452-4004 717-865-6611

David N. Groff
R.D. 3 Lewisburg, PA 17837
570-568-1420

C&M Farm Services Inc.

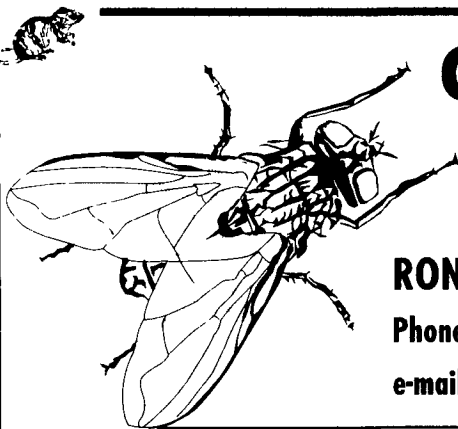
Elizabethtown • Pennsylvania

"Unique Farm Services"

RONI CLARK • Licensed & Insured

Phone: 717 • 361 • 6065 • Fax: 717 • 367 • 2347

e-mail: roni.clark@prodigy.net



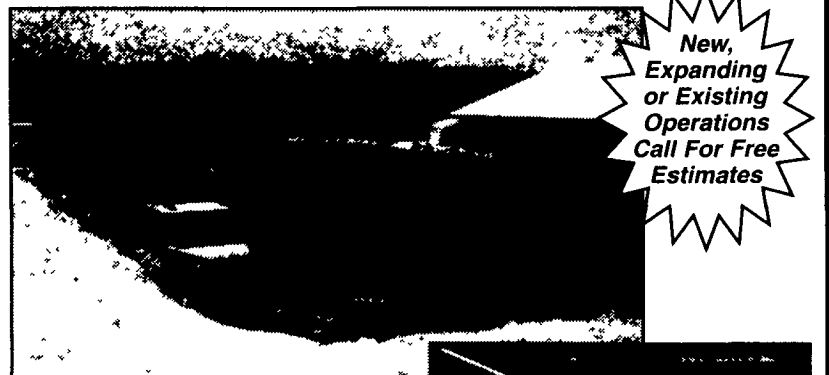
Take advantage of these products for the most complete pest control possible. Whether your need is to control pests, eliminate harmful bacteria, or encourage beneficial insects, we have the tools to help you.

JAGUAR PELLETS	12 lb. pail	\$35
RAMPAGE PLACE PACKS	100 count	\$75
HAWK BLOX	18 lb. pail/block	\$53.50
ZP TRACKING POWDER	25 lb. pail	\$102
DITREX TRACKING POWDER	25 lb. pail	\$90
AVITROL BAIT - for bird control	5 lb. pail	Call for pricing
BP 300 - 3% Pyrethrine	1 gal. container	\$87
PYRI-SHIELD	120 oz.	\$225
TOMCAT	10 lb. pail/loose	\$40
QUICK BAYT	45 lb. pail	\$145



SITE EXCAVATION

Installation of H.D.P.E. Liner Systems for:
Dairy, Hog, and Veal Manure Storage Facilities
Golf Course and Recreational Ponds



New, Expanding or Existing Operations Call For Free Estimates

FEATURES:

- 60 mil thick H.D.P.E. Liner
- Geotextile underlayment
- Leak detection system
- Economical Manure Storage
- Seals manure in, subsurface water out
- Concrete ramp for manure agitation and pumping

MANADA CONSTRUCTION CO.

1942 Camp Swatara Road • Myerstown, PA 17067
Ph: (717) 933-8853 • Fax:(717) 933-8078