

ATTENTION TRUCKERS and MECHANICS!

Are You Getting The Best PTO
At The Very Best Price? Compare



to what you are now using!

- Cast iron output flange w/heavy duty double lip seal, reinforced heavy duty studs and Nyloc nuts. Supports heavier hanging pump weight.
- Higher torque spur gears.
- Larger output load bearing and larger diameter output shaft.
- Heavy duty cast iron housing with all tapered roller bearings. Lower profile.



Beiler Hydraulics, Inc.
HYDRAULICS • PNEUMATICS • POWER TRANSMISSION
322 East Main St • Leola, PA 17540 • 717-656-4878 • Fax 717-656-4682



LEFEVER BROS. CHEVROLET CHEVY TRUCKS



YOUR DIRECT LINE TO GENUINE GM PARTS

1-800-533-3837

When you call the number listed above you'll reach our wholesale parts specialists, who can help you keep your GM repair work moving quickly

Ask about

- Specializing in GM Medium Duty Trucks, Current and Obsolete.
- \$500,000 Parts Inventory.
- Parts Locator for Those Hard to Find Items.
- We Ship Anywhere, Local Delivery Available.
- Experienced, Knowledgeable Personnel.

Mon - Tues, Thurs Fri
7:30 a.m. - 4:30 p.m.
Weds 7:30 a.m. - 8:30 p.m.
Major Credit Cards Accepted

717-432-9697

Quality Dealer Since 1921

406 U.S. Rt. 15 Dillsburg, PA 17019



THE FEELING IS GENUINE

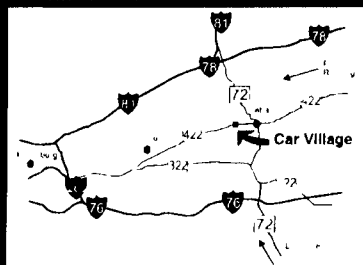


Business Hours:
Mon.-Fri. 9 to 9;
Sat. 9-4

2300 W.
CUMBERLAND ST.
(Rt. 422)
LEBANON, PA 17042
(Across From
Lebanon Valley Mall)

CAR VILLAGE

HEAVY DUTY TRUCKS



PHONE 717-274-2000 Toll Free 1-800-650-1420



GEORGIOUS 2000 FORD F350 CREW CAB
DUALLY 4 WHEEL DRIVE
XLT Lariat. Only 25,000 Miles, Powerstroke Turbo Diesel Auto, 40/20/40 Seat CD Player Tow Pkg Alloy Wheels



4x4 SUPER CAB DUALLY
2000 FORD F350
Very Strong Powerstroke Turbo Diesel, 6 Spd, Loaded XLT Factory Tow Pkg Aluminum Wheels



PICTURE PERFECT
99 DODGE 2500 4x4
You Will Like This One Only 28,000 Miles 24 Valve Cummins Turbo Diesel Auto Tow Pkg, All Options



2001 DODGE 2500 CLUB CAB 4x4
24 Valve Cummins Diesel, Factory Tow Pkg Laramie SLT, Only 19,000 Miles Remaining New Tk Warranty



5 SP SHORTBED • 99 DODGE 2500 4X4
Cummins Turbo Diesel 5 Sp Cold A/C Loaded All Options Only 41,000 Miles 2 Available



HEAVY CHEVY 2000 CHEVY K3500
CREW DUALLY, 4 WHEEL DRIVE
Hey Chevy guys This is the one Only 28,000 Miles High output, 6.5 Turbo diesel, Auto, All Power Options, Swing Out Mirrors & More



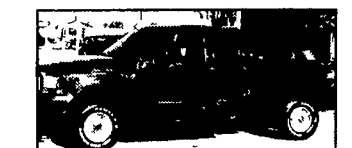
6 SPD CREW CAB • 4 WHEEL DRIVE
99 FORD F350 XLT LARIAT
Great Tow Machine, Powerstroke Turbo Diesel, 6 Spd, A/C, Capt Chairs, Console



PRICED RIGHT
97 FORD EXPEDITION XLT
Great Family Tow Machine 5.4 Triton V8 Auto A/C, Power Everything, Alloy Wheels New Insp-Service - Tires Priced Right, \$13,900



89 CHEVY K3500
SUPER CAB DUALLY
Very Nice Truck 4x4 V8, Auto, A/C 6 Good Tires Ready To Go \$9,900



POWERSTROKE DIESEL
99 FORD F250 SUPER CAB
4 Wheel Drive
Loaded XLT All Options Auto Alloy Wheels \$24,900



99 CHEVY K2500 4x4
Very Nice Heavy Duty 3/4 Ton Only 46,000 Miles Remaining New Tk Warranty High Output 6.5 Turbo Diesel, AT, A/C Fact Tow Pkg Lots Of Tk For The Money Only \$19,900



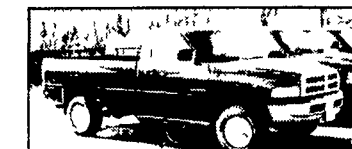
\$19,900
97 FORD F250 4x4 PICKUP
Very Nice, Heavy Duty 3/4 Ton, Powerstroke Turbo Diesel, AT, AC, Dual Tanks, Tow Pkg Alloy Wheels A Must See



15 PASSENGER VAN
2002 FORD E-350
Only 100 miles, Powerstroke Diesel Auto, Dual A/C, Great for the Family or Work Crew \$27,900



5 SPD DIESEL • \$22,900
98 GMC K3500 CREW CAB
Single Rear Wheel High Output, 6.5 Turbo Diesel 5 Spd A/C, Limited Slip 4.10 Gears, Only 39,000 Miles Remaining Factory Warranty



\$16,900
95 DODGE 2500 4X4
Cummins Turbo Diesel Auto A/C Tow Pkg Alloy Wheels Runs Strong



4 DOOR SHORTBED
2001 FORD SUPER DUTY
Very Nice, XLT, Lariat Powerstroke Turbo Diesel, Auto Capt Chairs, Console, Tow Pkg, Remainder New Warranty & Lots Less Than New Only \$29,900



LET'S GO TO WORK
2001 FORD F350 SUPER CAB, DUALLY 4X4
XL Pkg Not Fancy Just Nice, Only 20,000 Miles Powerstroke Turbo Diesel, 6 Sp, A/C, Cloth Bench, Vinyl Floor



MOM'S TRUCK
2001 FORD SUPER CREW F150
The Right Size, 4 Door, Short Bed Only 15,000 Miles 5.4 Triton V8 Auto, A/C Alloy Wheels



PAIR OF ACES
DODGE QUAD CAB DUALLY 4x4
Cummins Turbo Diesel 2001 - 6 Sp 99 AutoLoaded All Options



4x4 CREW CAB FLATBED
2001 FORD F350 SUPER DUTY
Brand New Ety Flatbed Gooseneck & Class 4 Hitch/Powerstroke Diesel Auto Loaded XLT Only 500 Miles

FLATBEDS, WORK & DUMP TRUCKS



CAB OVER CHASSIS 2000 HYUNDAI
Never Used Plastic Still on Seats, Only 300 Miles Cummins Turbo Diesel, 6 Spd A/C 25,500 GVW \$19,900



12 Foot Flatbed Dump
2000 Ford 450 Super Duty
Real Nice 31,000 Miles Powerstroke Turbo Diesel 6 Spd A/C Tow Pkg



ONLY 8,000 MILES 2001 FORD F350
4x4 Dump Tr A Nice One Auto Powerstroke Diesel A/C Pintle Hitch/ Heavy 12,500 GVW Remaining New Tk Warranty



4 DOOR CHASSIS
2002 FORD F350
4 Wheel Drive Only 800 Miles Powerstroke Turbo Diesel 6 Spd A/C Vinyl Seat & Floor Remain New Tk Warranty \$28,900



GOOSENECK
2002 FORD 550 SUPER DUTY
Heavy 17,500 GVW Powerstroke Diesel 6 Spd A/C Gooseneck Hitch



4x4 50 CLASSIS
1999 FORD SUPER DUTY
Rare Find Don't Wait Only 1,000 Miles 16.5 W 3.94 C/A Powerstroke Turbo Diesel 6 Spd A/C



12 FOOT FLATBED
99 FORD F350
Super Duty Powerstroke Turbo Diesel 6 Spd Vinyl Floor \$19,900



2000 FORD 550 SUPER DUTY
DUMP TRUCK
Like New Only 1,000 Miles Powerstroke Turbo Diesel AT 3 C 3Yd Body



DUMP TRUCK
2000 FORD F350
3,000 Miles Only \$21,900



4x4 CREW CAB
2001 FORD F350 SUPER DUTY
Only 1,000 Miles