

**ROPE IN SOME EXTRA CASH!**

Advertise With A Lancaster Farming CLASSIFIED AD...

Phone: 717-394-3047 or 717-626-1164



**35 TRUCKS AND TRAILERS**

1988 Ford PU 150, 5-spd, 6-cyl, 84,000 mi., good shape. 717-626-8631

1991 F-450. Very Nice! \$4,500. 717-729-5326.

'97 Dodge Ram 2500, Cummins turbo dsl, 4x4, AT, ext cab, pwr wind, DL, mirrors, brand new tires, new PA insp, 79,000 mi, \$17,800. (Mark) 570-356-7947.

Ford 7740 cab, 4x4, 12x12 trans, new tires & paint. 570-924-3116

1986 Chevy crg van, C20, 6.2 dsl, at/ac/ps/pb/cr, am/fm runs good. Spare work truck, best offer, 410-592-8825

'90 LN9000, S/A tractor, Cummins, 9 spd, good rubber, new battery, locking rear, \$3600. 717-463-3938

(8) IR22.5 tires w/Bandag 4100 CAP mounted on open wheels, tires like new, \$110/ea. Steel flat-bed, 7'5"Wx10'7"L, has bulkhead & hoist, \$200. 8ft Contractors cap off Dodge Dakota, Good cond, \$200. (2) 12V Monarch pumps w/valves for snowplow, \$50/ea. (2) Heavy duty cylinders & frame for Volk snowplow, \$35/ea. 610-383-0591, 610-316-4890

1974 Ford 600 dump truck insp gd cond \$2500 570-928-8754

2002 GMC SLE, h-d 3/4 t, 8100 v-8, Allison trans, white, loaded, 4300 mi, 717-569-3926

1989 Dodge Ram 350, roll back truck, Cummins dsl, 5 spd, 17 1/2" alum body, nice condition, \$8,500. 215-512-0307, days, eves 215-646-3113.

1988 Chev series 70, 18K mi, 28,000 GVW, 10' dump w/10' Walker hyd snow plow, rear auger & spinner cinder attachment. 570-928-8754.

'95 Mack CH613, 350 eng, 9 spd trans, 60" aid rise sleeper, ex cond. Mike Klein. 609-259-0640 NJ. Can be seen in PA.

'92 Ford Explorer, 4x4, 5 spd, 2 dr, PW, PL, AC, AM/FM Cass, good cond. \$3000. 610-488-0298

Cummins dsl 24 valve engine & 6 spd manual trans out of 2001 Dodge 4x4 w/30,000 mi., \$4500 OBO. 585/526-6692

01 Toyota Tacoma, 4x4, auto, SR5, Christmas red, 21K miles, extend cab, am/fm/cd/cass, extend warranty, \$18,500. 610-896-5258

'91 Ford 350 Maxi-van, dsl, 9 pass seating, v.g. cond, \$3000. '93 GMC 15 pass van, 6.2 dsl, v.g. cond, \$4500. 610-856-7740

'99 FORD F350 crew cab, 4WD, dually, dsl, auto, Lariat, w/leather, 79K mi, asking \$26,500 firm. Ask for J.B. 717-242-1280.

1990 Cleveland Lo-boy trailer, 9 ton, air brakes \$2800. 570-586-1306

Office trailer 10'x45', 2 offices, 1 large reception area, heat, air, bathroom, steel stairs, skirting, \$7500. 215-538-0154

'94 Ford F-350 4x4 truck, 7.3L Turbo, Dsl, PW, AC, Alum. whls, PS, Bedliner, Toolbox, RED, 112k, exc. cond. \$9,750; 610-459-3646.

1970 F700 Ford, feed blower truck, 16 ft box w/dump, working, new inspection, great shape, \$3500. 610-932-8267

'95 Dodge 2500 pickup, Cummins dsl, reg cab, 8ft bed, 4x4, 5 spd, loaded, v.g. cond. \$11,700. 717-734-3139

2000 Ford F350 XLT dually turbo diesel, auto, 2wd, 65,000 mi, plus 2000 United Express gooseneck enclosed trailer. Will separate. 717-367-7514

1998 GMC SLE 3500 Series, 454, auto, loaded, gooseneck hitch, 4,400mi, YES! 4,400mi, MINT COND. Must Sell, \$17,500 OBO, 856-358-1281.

'96 Chevy Cheyenne 2500, 4x4 Suburban, 350 auto, PS, PB, PL, cruise, tilt, air, towing package, 81,000 one owner miles, new radials, dark green, \$12,900. 717-733-2873

'95 GMC SLE 1500 4x4 Suburban, 350 auto, PS, PB, PW, PDL, cruise, tilt, air, AM/FM cassette, 97,000 one owner miles, new radials, burgundy, \$11,500. 717-733-2873

'98 Dodge 1500, short whl. base, 8 pass., 3.9 V6, auto, PS, PB, PW, PDL, cruise, tilt, air, AM/FM Cass., 39,000 miles, \$10,500. 717-733-2873

'97 Chevy Cheyenne 2500, extended cab, 2WD, 350 auto, PS, PB, cruise, tilt, air, AM-FM Cass., towing package, 8,600 GVW, 63,000 one owner miles, \$11,900. 717-733-2873

'97 Chevy Express LS, 8 pass., 350 auto, PS, PB, PW, PDL, cruise, tilt, dual air, AM-FM Cass/CD, 62,000 miles, \$11,900. 717-733-2873

'97 Chevy Cheyenne 2500 w/8' Reading utility body, 350 auto, PS, PB, air, 8600 GVW, 80,000 one owner miles, new radials, red, \$12,500. 717-733-2873

'98 Chevy Cheyenne 1500 4x4, 305 auto, PS, PB, cruise, tilt, air, 37,000 one owner miles, dark green, excellent condition, \$13,500. 717-733-2873

'00 Ford Ranger XLT Extended cab, 2WD, 3.0 V6, 5 spd, PS, PB, air, AM/FM cass/CD, 72,000 one owner miles, new radials, dark green, \$6,950. 717-733-2873

'96 Chevy Cheyenne 2500, HD, 3/4 ton, 4x4, 350 auto, PS, PB, cruise, tilt, air, AM/FM cass., 4.10 ratio, limited slip diff., towing pkg., 62,000 miles, new radials, dark green, \$12,900. 717-733-2873

'96 Chevy Cheyenne 2500, 4x4, Suburban, 350 auto, PS, PB, cruise, tilt, air, AM/FM cass., 4.10 ratio, towing pkg., 81,000 one owner miles, new radials, \$12,900. 717-733-2873

'99 Chevy Cheyenne 2500, 2WD, 350 auto, PS, PB, cruise, tilt, air, AM/FM Cass., 8,600 GVW, towing package, 62,000 one owner miles, white, \$10,900. 717-733-2873

'00 Chevy Express LS, 8 pass, 350 auto, PS, PB, PW, PDL, cruise, tilt, dual air, AM/FM Cass/CD, 36,000 one owner miles, new radials, black, \$17,900. 717-733-2873

'01 Chevy Astro LS, 8 pass, 4.3 V6, auto, PS, PB, PW, PDL, cruise, tilt, air, AM/FM cass., 42,000 one owner miles, new radials, burgundy & pewter, \$11,900. 717-733-2873

'96 F250, V8, 351, AT, 84,000 mi, Hunter green, \$8995. 717-445-7305

1994 Dodge 2500 pickup, 318, automatic, air/am/fm, 114,000 mi, vy gd cond, new inspection. \$4200. After 6 pm 717-277-0395

Fisher snowplow, ex cond, \$1500 obo. 610-372-2479 Ask for Lyle

1987 Int. model 1700 flat-bed, dsl engine, 5-spd w/2-spd axle, 22" alum. Eby flatbed w/full overhead over cab, custom built for hauling hay w/custom tarp, all exc. cond. Must see. 315/649-2697

**TAKE ADVANTAGE OF YEAR-END PRICING!**

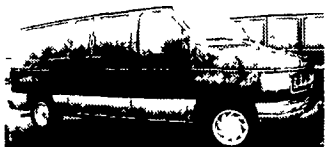
**3/4 Four Way Auto Sales**

Rt. 23 New Holland, PA 717-354-3199

Toll Free 1-877-999-VANS (8267)

Financing Starting at 5.99%

VANS, VANS, VANS - All Makes, All Models. • Commercial customers w/comed. • Warranties available.



**01 FORD E-150 CLUB WAGON CHATEAU** 7 Passenger, 4.6 V8 Dual A/C & Heat, Privacy Glass PW PL Tilt Cruise Cassette, CD, Pseat, Keyless Quad Captains Blue & Silver 23,000 Mi #4396



**01 FORD E-350 CLUB WAGON XLI** 12 Passenger 5.4 V8, Dual A/C & Heat Privacy Glass PW PL Tilt Cruise Cassette CD Pmirrors Keyless Silver 18,000 Mi #4375



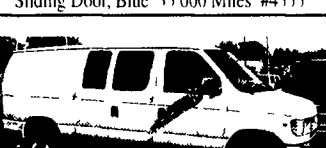
**01 FORD E-150 CLUB WAGON XLT** 8 Passenger, 5.4 V8, Dual A/C & Heat Privacy Glass, PW, PL, Tilt, Cruise, Cassette, Blue, 61,000 Mi #4415



**01 FORD F-350 SUPER CLUB WAGON XLI** 15 Passenger, 5.4 V8 Dual A/C & Heat Privacy Glass, PW, PL, Tilt, Cruise, Cassette CD, Silver, 26,000 Mi #4342



**00 CHRYSLER GRAND VOYAGER SE** 7 Passenger 3.3 V6 Dual A/C & Heat, Privacy Glass PW PL Tilt, Cruise Cassette Double Sliding Door, Blue 35,000 Miles #4355



**01 FORD E-350 ECONOLINE** 5.4 V8, A/C, 9500 GVWR, Side and Rear Windows, White, 55,000 Miles #4336

**Additional Inventory**

**7 Passenger**  
**01 Ford E-150 Club Wagon Traveller,** 5.4 V8 Quad Captains Green/Gray 27,000 Mi

**00 Chevy Venture Extended LS,** 7 Pass 3.4 V6 55,000 Mi Red

**8 Passenger**  
**01 GMC G1500 Savana SLE** 8 Pas 5.7 V8 Blue 28,300 Mi

**(2) 02 Chevy G1500 Express LS** 5.7 V8 Victory Red, 20,800 Mi

**00 GMC G1500 Savana SLE** 8 Pass, 5.7 V8 Burgundy 17,600 Mi

**00 GMC G1500 Savana SLE** 8 Pass 5.7 V8 Blue 31,000 Mi

**02 Ford E-150 Club Wagon XLI** 8 Pass 5.4 V8 22,000 Mi Silver

**01 Dodge B2500 Ram Wagon,** 8 Pas 5.2 V8 Gray 13,600 Mi

**02 Chevy G1500 Express LS,** 8 Pas 5.7 V8 Pwter 24,200 Mi

**12 Passenger**  
**99 Ford E-350 Club Wagon XLI** 12 Pass 6.8 V10 Green 7,000 Mi

**01 Ford E-350 Club Wagon XLI** 12 Pass 5.4 V8 White 36,000 Mi

**00 Ford E-350 Club Wagon XLI** 12 Pass 5.4 V8 15,000 Mi Silver

**01 GMC Savana SLE** 12 Pass 5.7 V8, 42,000 Mi Blue

**15 Passenger**  
**02 Ford E-350 Super Club Wagon XLT** 15 Pass, 5.4 V8, Silver 14,000 Mi

**02 Ford E-350 Super Club Wagon XLI** 15 Pass, Silver 23,000 Mi

**02 Ford E-350 Super Club Wagon XLI** 15 Pass Green, 32,000 Mi

**02 Ford E-350 Super Club Wagon** Silver, 23,000 Mi

**01 Ford E-350 Super Club Wagon XLI,** Alternative Seating - 8 Captains 7.3 Power Stroke Diesel, DK Blue 23,000 Mi

**01 GMC G2500 SAVANA SLE** 12 Passenger 5.7 V8 Dual A/C & Heat Privacy Glass PW PL Tilt Cruise CD Tow Package DK Blue 40,000 Miles #4425

**00 FORD E-350 ECONOLINE HI-TOP** 7.3 Powerstroke Diesel, A/C 9500 GVWR 110 Inverter White, 49,000 Mi #4395

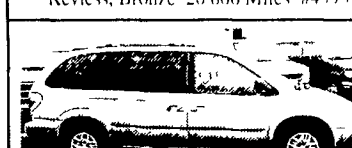
**02 FORD E-250 ECONOLINE** 5.8 A/C, 8600 GVW Side & Rear Glass 4.10 Ltd Slip Rear White 4,000 Mi #4,05



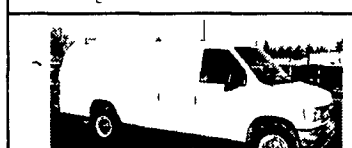
**02 FORD F-350 SUPER CLUB WAGON XLI** 15 Passenger 5.4 V8 Dual A/C & Heat Privacy Glass PW PL Tilt Cruise Cassette CD Keyless Tow Package Green Silver Blue 11,000 31,000 Mi



**02 CHEVY G2500 EXPRESS LS** 12 Passenger 5.7 V8 Dual A/C & Heat Privacy Glass PW PL Tilt Cruise Cassette Keyless, Bronze 26,800 Miles #4393



**01 DODGE GRAND CARAVAN SPORT** 7 Passenger 3.3 V6 Dual A/C & Heat Privacy Glass PW PL Tilt Cruise Cassette Double Sliding Door Tan 23,000 Mi #4268



**02 FORD F-350 SUPER ECONOLINE** 5.4 V8, A/C PW PL Tilt Pmirrors Keyless 9400 GVW Rear Door Glass White 19,600 Mi #4435



**00 FORD E-350 ECONOLINE HI-TOP** 7.3 Powerstroke Diesel, A/C 9500 GVWR 110 Inverter White, 49,000 Mi #4395



**02 FORD E-250 ECONOLINE** 5.8 A/C, 8600 GVW Side & Rear Glass 4.10 Ltd Slip Rear White 4,000 Mi #4,05

**TIME FOR THE SPRINTER.**

Freightliner — a Brand of DaimlerChrysler

Freightliner of Harrisburg



**TEST IT NOW.**

www.sprintervans.net

TIME TO TAKE A TEST DRIVE.

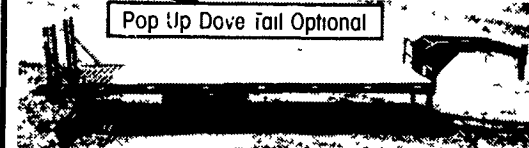


- Ray Marino - (800) 871-1935  
Freightliner of Harrisburg / 4400 Chambers Hill Road / Harrisburg, PA 17111
- Rick Stetter - (800) 769-9887  
Freightliner of Lancaster / 1675 Rohrerstown Road / Lancaster, PA 17601
- Scott Shoemaker - (888) 200-2229  
Freightliner of Hagerstown / 11611 Hopewell Road / Hagerstown, MD 21740
- Rich Horner - (866) 788-8587  
Freightliner of Philadelphia / 2720 Bartram Road / Philadelphia, PA 19007

**East Coast Trailers**

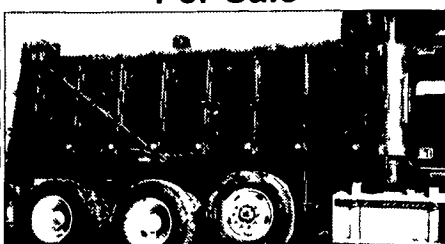
Honesdale, PA • 570-729-8870

Pop Up Dove Tail Optional



28' 25,500 lb. gooseneck, 102 wide, standup ramp, dove tail ..... \$5,750  
24' 14,000 lb. gooseneck, standup ramp, dove tail ..... \$3,700  
100 Trailers - All Sizes in Stock

**For Sale**



**15 1/2' Steel Dump Body** with cylinder tank and tarper  
**\$1,750 OBO**  
**(717) 866-2568**