

Landall tand-trailer 15T, 30' deck, airbrakes, 21.5x17.5 tires \$6500. JD 210C backhoe, 4wd, cab clean. \$14,500. 570-698-8311

JD 300B, almost new rubber, runs great, looks rough, full cab, 2 buckets. 717-225-4591 evenings

'87 JLG 33HA, 33ft boom-lift, 2wd, Wisconsin DF eng, good cond, \$4500. 717-709-1954 eves

Cat 963 ripper, Cat 953 gen-purp bucket rebuilt. 717-492-9898 after 6 pm

Case Snow blower 6 ft wide, excellent condition. 570-648-0413 eves

HD 6 dozer, runs good, \$4,200. 717-438-3290, after six pm

CAT 922B ldr, straight frame, good cond, \$7,500. 856-935-8492.

Bobcat 963 Skid Loader, 1999, 535 hrs, 2 spd, \$19,500; 717-786-0256.

Int 175 B crawler/ldr, has nice 4 in 1 bucket, best offer. 717-862-3970.

Terramite T5C backhoe/loader, 6 mo old w/42 hrs, \$13,400. 215-287-9365

JD 455D track ldr, rebuilt trans, new U/C, new teeth on GP bucket, 4 shank ripper, ROPS/sweeps, \$16,000 OBO. 302-363-3667.

### For Sale

- Asplundh drum chipper w/4 cyl gas engine, new fuel pump, new water pump,
- new radiator, rebuilt generator, new battery, radial tires and extra set of chipper knives

**\$4,500**

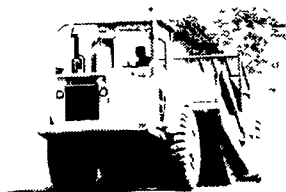
Call toll free at 1-866-653-7100 from 8:00 A.M. to 5:00 P.M., ask for Jon. Leave message after hours.

### For Sale

WELL MAINTAINED FLEET OF SCRAPERS  
**4 TEREX TS14B**

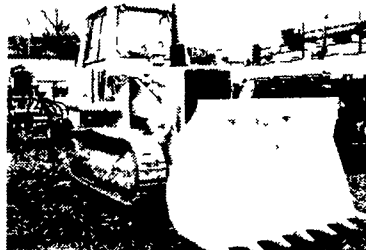
Buy 1 or Buy All Available in Pa. for \$49,000 each! Come and operate.

Extensive parts inventory available with purchase of all 4



Call Rich at Brubacher Excavating Inc. 717-445-4571 or 610-478-0140

### John Deere 655 Crawler Loader with Fully Enclosed Cab.



Powered by J D 414 Turbo rated 110 HP, 18 ton weight class, very good 90% new U C, loader & bucket pins tight,

Good Solid Machine Serviced, Clean and Painted Ready for Work!

UT4994 **\$24,800**

Ask About Good Finance Rates

**BINKLEY-HURST BROS. INC.** 133 Rothsville Station Rd. P.O. Box 0395, Lititz, PA 17543-0395 (717) 626-4705 1-800-414-4705 Fax (717) 626-0996

### LOTS OF ATTACHMENTS IN STOCK! When you need it NOW! Call us!

#### Clamp-On Bucket Forks

- 1000 lb Cap **\$397**
- 2000 lb Cap **\$425**
- 3000 lb Cap **\$625**
- 4000 lb Cap **\$735**
- 6000 lb Cap **\$997**

#### 3-Point Mount Forks

- 1200 lb. Cap **\$225**
- 1500 lb. Cap **\$298**

#### Skid Steer Loader Forks

- 42" **\$690**
- 48" **\$695**

For All Current Major Mfg. Brands Of Loaders



110 South Railroad Ave Mon Thru Fri 7:30-5:00 New Holland, PA 17557 Sat 7:30 Noon Other Times By Appt (717) 354-4191

**Sales Service**

## JERRE MARTIN REPAIR

391 N. Farmersville Rd., Ephrata, PA 17522 (Just minutes off RT 222)

717-859-3283

Toll Free 877-317-5348

**Rental Repairs**



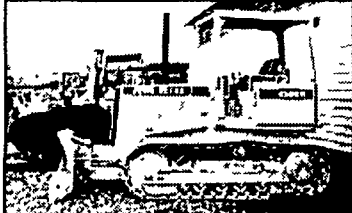
JD 450 crawler loader, choice of 2 **\$7,500**



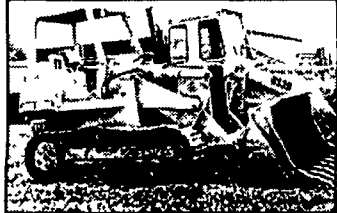
92 Cat 953 **\$41,000**



JD 570A, Excellent **\$16,200**



94 JD 450G **\$24,500**



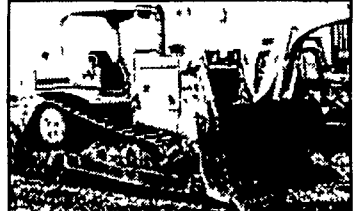
93 JD 655B, LGP **\$27,000**



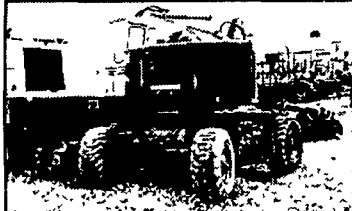
Cat 943 OROPS **\$19,500**



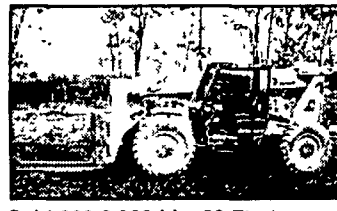
Cat 951C **\$14,700**



90 Cat D6H, Diff, Steer **\$42,000**



Condor 6G, 4x4, Manlift **\$10,500**



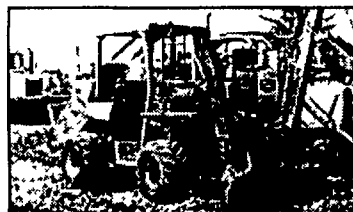
Gehl 663 6,000 Lb., 38 Ft. **\$22,000**



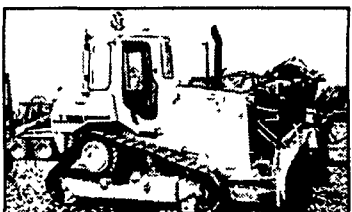
'99 Cat 226 **\$15,000**



'88 JD 624E **\$33,000**



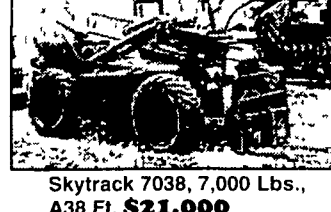
Ditch Witch 6510, Diesel, Traveler With Blade And Hoe **\$4,500**



87 D4H **\$29,000**



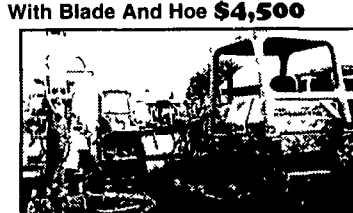
JD 644B Rebuilt Motor **\$18,000**



Skytrack 7038, 7,000 Lbs., A38 Ft. **\$21,000**



Case 1840 Rebuilt Hydro's **\$8,500**



Cat 955L **\$18,000**



JD 450C Loader, New Tracks **\$13,500**



JD544B, Rebuilt Motor **\$14,500**



88 Cat 963 **\$31,000**



Late Model TCM 5,000 Lb. **\$3,500**



96 Komatsu PC150 **\$32,000**



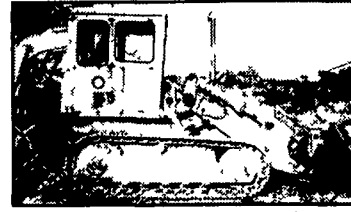
96 Cat 311 **\$31,500**



JD 2155 w/Finishing Mowers, 15 ft. Swath **\$10,500**



'94 JCB 214, 4x4, extend-a-hoe **\$20,000**



Cat 941 crawler loader, cab **\$8,500**



Case 1845B **\$6,800**



MF 383 farm tractor **\$7,000**



Mack DM 600 **\$5,500**



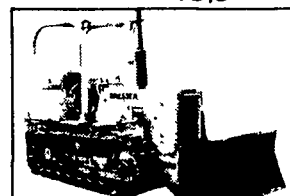
JD 544C New Torque Converter, New Paint **\$19,500**

Road Service Available Now Custom Repairs On All Makes Construction Equipment Financing Available

WE ARE BUYERS FOR LATE MODEL CONSTRUCTION EQUIPMENT NEEDING REPAIRS

Cat 416C, 4x4, Cab, Extend-A-Hoe **\$29,000**

Cat 416C IT, 4x4, Cab, Extend-A-Hoe **\$30,000**



Dresser TD7E **\$9,500**



'90 Cat 963 **\$31,000**