

Diesel Engine Service

13 Pleasant Valley Road • Ephrata, PA 17522
 PHONE: 717-733-3890 • FAX: 717-738-3146

JOHN DEERE & DETROIT DIESEL

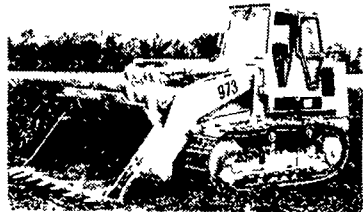


• Engines • Power Units •
 Generator Sets • Complete
 Rebuilding • Parts & Service
 • Rockford & Twin Disc
 Clutches & Parts •

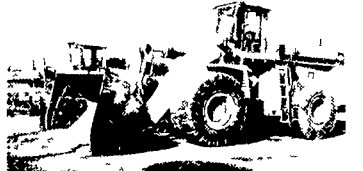
**New JD Powertech
 Engines 20-500 HP**

- 80 HP 4045D JDPower Unit NEW **\$7,750**
- 115 HP 4045T JD Power Unit NEW **\$9,682**
- 75 HP 4219D JD Power Unit w/Hood **\$6,000**
- 180 HP 6466T JD Power Unit Rebuilt **SOLD \$1,200**
- 100 HP 453N Detroit Diesel Power Unit Used **\$3,200**
- 125 HP 471N Detroit Diesel Power Unit Used **\$3,500**
- 300 HP 8V71N Detroit Diesel Power Unit Rebuilt **\$6,500**

**Lancaster
 Farming's
 Classified
 Ads Get
 Results!**



90 Cat 973 Crawler Loader EROPS New Cat Undercarriage Excellent Condition **\$49,500**



92 Komatsu WA-600 Wheel Loader, 435hp 7 1/2 yd Bucket Ready to Work **\$35,000**



92 Cat 312 Excavator **\$30,000**



Trojan 232 25 Ton 6x6 Haul Truck **\$29,500**
 92 Randon 628 6x6 25 Ton Haul Truck **\$28,000**



88 JD 450G Good U.C. 6 Way Blade **\$23,000**

- 92 Terex 3066 Haul Truck, Cummins Dsl 6x6 **Call**
- Cat EL300 Excavator w/ HYD Hammer **CALL**
- Cat 955H Crawler Loader Good Condition **\$10,000**
- Case 1845C Skid Loader **\$8,200**



97 Kobelco SK150LC-IV 48 Bucket 8 6 Wide Excellent Condition **\$42,500**



95 Cat 938F New Rubber GP Bucket Good Condition **\$47,500**



- 86 Cat 953, Cab 4 in 1 Bucket **\$31,000**
- 88 Cat 963, Cab GP Bucket **\$36,000**
- 92 Cat 963 Cab GP Bucket **\$42,000**
- Cat 977L 14X Series **\$19,500**



86 Cat D5H, Good Undercarriage Tight Blade **\$39,000**
 92 Cat D5H XL Cab 6 Way Blade **\$42,500**



Cat E120B Excavator **\$23,000**
 1991 Hitachi EX120 **\$24,000**

- 88 JD 644E Wheel Loader, EROPS, GP Bucket **\$30,000**
- 94 Moxie MT3(SOLD) Truck **\$37,500**
- 88 Cat 963, OROPS, 4-in-1 Bucket **\$28,500**

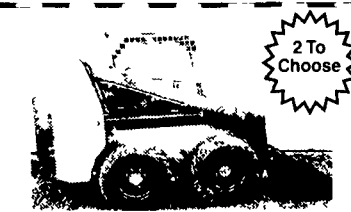
EQUIPMENT

- Case 1840 Skid Loader **\$9,500**
- JD 555 Crawler Loader **\$15,500**
- Cat 980B Wheel Loader w/Forks **\$18,500**
- 94 Cat 416B 4x4, Ext Hoe **\$26,500**
- 94 Bobcat 953 **\$12,000**

PAVING EQUIPMENT

- Mauldin 500 Paver **\$3,500**
- Hyster 350C Roller **\$5,000**
- Case 252 Tandem Vibratory Roller **\$6,500**
- 95 Ingersol Rand BA30 Tandem Vibratory Roller **\$6,500**
- Stone Wolfpack 2500 double drum asphalt roller **\$2,500**

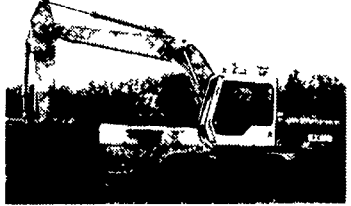
Weaver's Equipment Sales
 RD#1, Box 418, Milton, Pa. 17847
 Phone: 570-523-9598



Brand New Thomas 1700 50hp 1700lb Lift **\$13,500**



95 Komatsu PC60, Cab 3700 Hrs Rubber Tracks Backfill Blade **\$22,500**



93 Hitachi EX150 6700 Hrs 8 6 Wide **\$29,500**



(2) 99 Case 580L Turbo 2500 Hrs Plumbed **\$31,000**

Available 99 Tramac 1000 lb Hammer **\$4,500**

93 Case 580 Super K Cab 4x4 Ext Hoe **\$17,900**

94 Ford 555D Cab Ext Hoe **\$15,000**

Ford 655A Backhoe OROPS 2WD **\$8,900**



89 Cat 953 Cab 10 000 Hrs 50% UC **\$35,000**

89 Cat 953, Cab 60% UC **\$32,500**

94 Cat 953B Cab New UC 8200 Hrs **\$65,000**

95 Chevy 3500 Service Truck, 6 5 Dsl **\$8,900**

88 Ford F350 Dually Mechanics Body Crane Electric Lift Gate New Motor New Tires **\$6,900**

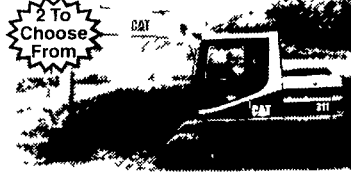
Kubota L2650 4x4 Loader 2900 Hrs **\$8,900**

90 Hitachi EX150 7500 Hrs Plumbed **\$22,500**

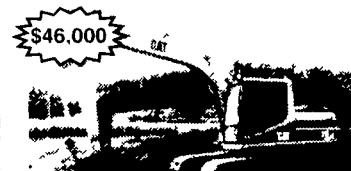
87 JD 790D, New Paint 11 2 Wide 52 000 lbs **\$24,000**



83 Cat 973 Cab Good UC **\$32,000**



94 Cat 311 4370 Hrs **\$27,500**
 93 Cat 311 3400 Hrs **\$27,500**



96 Cat 315L 6800 Hrs Very Clean **\$46,000**



2000 Hitachi EX200-5 2900 Hrs **\$69,000**

95 Komatsu PC40FR 3200 Hrs **\$14,500**

97 Komatsu PC40FR 2950 Hrs **\$15,000**

96 Komatsu PC40 3200 Hrs **\$14,500**

95 Komatsu PC40 3660 Hrs 6 Way Blade **\$13,500**

95 Komatsu PC40, 4 060 Hrs **\$12,500**

92 Komatsu PC40 3 780 Hrs **\$12,000**

94 Komatsu PC40 3150 Hrs **\$12,500**



96 JD 410D cab 4x4 extendahoe Very Clean **\$22,500**

93 JD 410D, Cab 3700 Hrs 4x4 Standard Hoe **\$22,500**

New Additions

97 Traverse 8040, Good Tires 8000 lb Lift 32 Reach **\$32,000**

94 Cat D3C Series III Cab 50% UC **\$25,000**

97 Ford 555E, Canopy 2150 Hrs 2WD Standard Hoe **\$15,000**

1999 JCB 160 160 Excavator 1300 Hrs 35 000 lbs **CALL**

1998 JCB 2145 Cab 4x4 4W steer extendahoe 2300 Hrs **CALL**

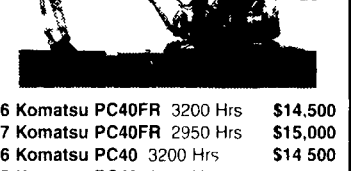
JCB 3x Backhoe OROPS 2WD needs engine work **\$3,500**

Too Ugly to Picture

1995 Komatsu PC 200, 16 000 Hrs Grapple **\$18,500**

97 Ingersoll Rand VR60B Telescopic Forklift 3200 Hrs 35 Reach 6000 lb Lift **\$29,500**

97 Ingersoll Rand VR90B 1950 Hrs 8000 lb Lift 36 Reach **\$32,500**



96 Komatsu PC40FR 3200 Hrs **\$14,500**

97 Komatsu PC40FR 2950 Hrs **\$15,000**

96 Komatsu PC40 3200 Hrs **\$14,500**

95 Komatsu PC40 3660 Hrs 6 Way Blade **\$13,500**

95 Komatsu PC40, 4 060 Hrs **\$12,500**

92 Komatsu PC40 3 780 Hrs **\$12,000**

94 Komatsu PC40 3150 Hrs **\$12,500**

90 Komatsu PC40, 3 580 Hrs **\$12,000**

94 Komatsu PC45 3280 Hrs Cab Steel Tracks Backfill Blade **\$16,500**

95 NH LX665 1000 Hrs **\$10,500**

97 NH LX885 3200 Hrs New Tires **\$10,750**

93 Mustang 940 3400 Hrs T Bar **\$6,500**

94 NH T83 2400 Hrs Bucket & Forks **\$9,500**



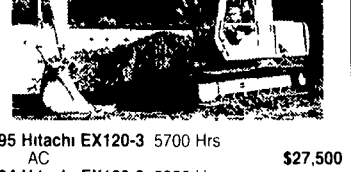
86 Linkbelt 2650 **\$13,900**

88 Linkbelt LS2800 44 000 Lbs 5600 Hrs **\$21,500**

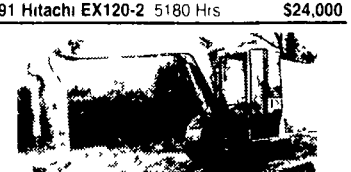


87 Cat 963 Cab 4 in 1 Bucket 90% Cat UC **\$39,000**

87 Cat 963 Open ROPS New Tracks **\$35,000**



96 Hitachi EX100-5, 1860 Hrs Bolt On Rubber Pads Plumbed AC **\$35,500**



95 Hitachi EX120-3 5700 Hrs AC **\$27,500**

94 Hitachi EX120-3 5550 Hrs Plumbed **\$28,000**

93 Hitachi EX120-2 6800 Hrs **\$21,000**

91 Hitachi EX120-2 5180 Hrs **\$24,000**



96 Hitachi EX55UR Cab 2900 Hrs Rubber Tracks Backfill Blade **\$17,500**

92 Cat 307 SSR Blade 4800 Hrs **\$17,500**

95 Cat 307 Rubber Tracks Backfill Blade 2000 Hrs 15 000 lbs **\$24,000**

93 Komatsu PC75UU 4971 Hrs Rubber Tracks Blade 4900 Hrs **\$19,000**

94 Komatsu PC75UU 4900 Hrs **\$19,500**

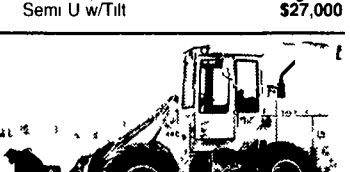


96 Kobelco SK150LC, 6900 Hrs 8 6 wide Good UC **Call**



92 JD 850B, Cab w/Air 6001 Original Hrs 70% UC New Engine & Splitter Box **\$39,000**

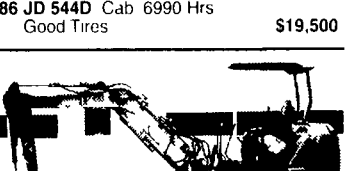
87 JD 850B, Cab 80% UC Rebuilt Engine Semi U w/Tilt **\$27,000**



84 JD 544C Cab 6480 Hrs Quick Coupler **\$17,000**

83 JD 544C Cab 4665 Hrs Good Tires Quick Coupler **\$17,000**

86 JD 544D Cab 6990 Hrs Good Tires **\$19,500**



96 Komatsu PC35R Canopy 2480 Hrs Rubber Tracks Backfill Blade **\$13,500**

95 Komatsu PC30 Cab **\$14,000**

94 Komatsu PC30 2600 Hrs **\$12,500**

94 Komatsu PC25 3100 Hrs **\$12,500**

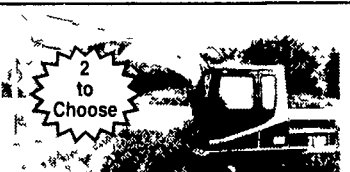
95 Komatsu PC20 2300 Hrs **\$10,500**

89 Cat D3C OROPS 4380 Hrs 80% UC **\$22,500**



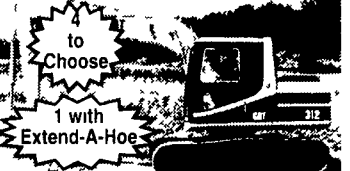
73 Cat 930, Cab Good Tires **\$18,500**

84 Cat 910 Good Tires 6000 Hrs **\$15,500**



97 Cat 312B AC 2200 Hrs **\$42,000**

97 Cat 312B AC 4580 Hrs **\$41,000**

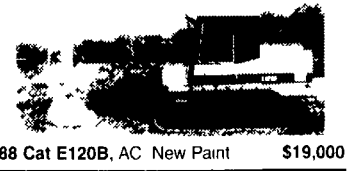


96 Cat 312, AC 5100 Hrs New Paint **\$32,500**

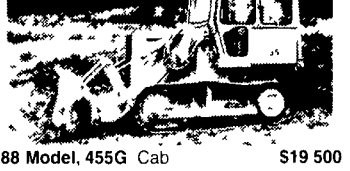
93 Cat 312, 6800 Hrs w/Ext Hoe **\$28,500**

93 Cat 312, 5700 Hrs AC **\$29,000**

93 Cat 312, 3700 Hrs New Paint **\$31,000**



88 Cat E120B, AC New Paint **\$19,000**



88 Model, 455G Cab **\$19,500**

JD 455D Crawler Loader New UC **\$14,900**

Cat 977L Good UC **\$15,000**

Cat 951C **\$13,500**

79 Cat 955L 13X Series **\$19,500**

Cat 951B Very Good UC No Rops **\$9,500**

85 Cat 224 Mobile Excavator Clear 3rd Valve **\$12,500**

95 Mec 1948HT Electric Manlift **\$2,900**

Rentals Available Day, Week, or Month

Weaco Equipment

Financing and Lease Purchase Available No Sunday Calls

645 Swamp Church Rd.

Reinholds, PA

717/336-7375

877/529-9328