

LESHER SALES & SERVICE
 2700 Cumberland St. Lebanon, Pa. (Route 422 West)
717-273-4535
 website:www.leshermacksales.com

New Trucks

(1) 2003 CH613 Day Cab, E7-427, 10-Spd., Air Susp., 169 W.B.

(1) 2003 CH613 Day Cab, E7-427, 10 Spd., Air Susp., 163 W.B.



Used Trucks

- (1) 1994 CH613, Day Cab
- (1) 1995 CH613, Day Cab
- (1) 1995 CH613, 42 in. Highrise

Many other Trucks in Stock - Call for Details

DIESEL PERFORMANCE



Chevy Duramax:

Adjustable Module 30 to 90 HP increase!
 AFE performance air filter assy

Dodge 24 Valve:

Adjustable Module 40 to 120 HP increase!
 Exhaust & intake upgrades

Powerstroke:

Performance chips 40, 60 80 hp.
 Programmed while you wait!!

SPECIALS:

- 4" EXHAUST SYSTEM FORD OR DODGE \$575.00
- GMC 6.5L LONG BLOCKS \$2900.00
- Exhaust brakes CALL
- Magnum AFE air filter assy '02 Powerstroke less 10%
- Funnel RAM AFE air filter assy Dodge 94-01 less 10%
- Magnum AFE air filter GMC DURAMAX less 10%
- Digital Pyrometer kit, Boost gauge & gauge pod \$399.00

From The Diesel Specialists For Over 45 years

Penn Diesel Service Co.
 Interstate 81 Exit 77, Harrisburg, PA
 (800) 535-2913

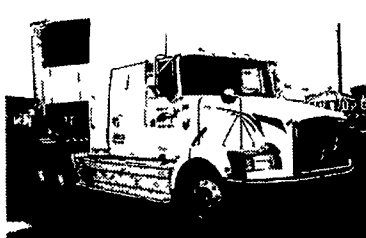
H&L SALES CO.

3830 North George St Extd., Manchester, PA 17345

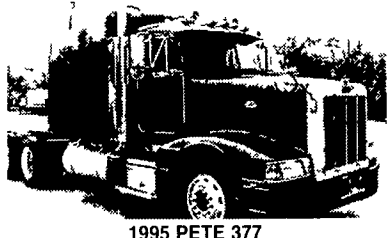
866-999-5600 • 717-764-3477 (York)



99 MITSUBISHI FG
 12 Stake Dump 5 Speed Diesel PS \$14,900



95 VOLVO WIA64TTES
 Cummins Diesel 460 HP Jake Brake 10 Speed Air Ride 10 Alum Wheels PS, AC 589,000 Miles \$13,900



1995 PETE 377
 12 7 Det 470 hp, Jake Brake, 9 speed, 63 Sleeper Air Ride Susp., Alum and Steel \$12,900



1996 VOLVO WG 64
 11 1 Det 350 hp Jake Brake, 9 speed, Spring Susp Steel Wheels \$10,900



1998 UN 1400
 Diesel Auto and Manual Trans 14 000 GVW 14' and 16' Van Bodys Starting at \$9,800



1995 OTTAWA
 Jockey Truck Cummins Power Auto Model YT30



96 INT'L 9400
 Det 430hp Jake 70 Pro Sleeper Air Ride Susp Alum Frit and Steel Rear Wheels 10 spd 228" WB \$14,500



30' ALU. DUMP TRAILERS



WM. COHEN & SONS, INC.

"THE TRUCK PARTS STORE"

HEAVY DUTY TRUCK PARTS - NEW & USED - REBUILT REARS & TRANSMISSIONS
610-269-1298 Fax 610-269-0787 www.cohentruckparts.com



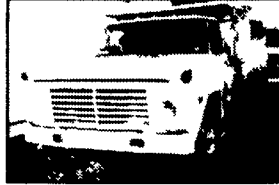
96 Morgan 22' Reefer Body
 Swinging back doors, curb side door damage on Thermo King sheet metal



92 Hino Model FE
 6 cyl turbo diesel, 6 spd, hyd brakes, 18' reefer body w/rollup door, roll up curb side door



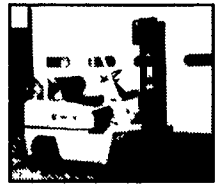
New Flatbeds Available
 Sizes currently available are 12', 14', 20', 22' and 24' Racks are also available



1968 Ford F-600
 330 V8, 4spd 2spd rear hydraulic brakes, 9' dump body, 21,000 GVW, runs excellent



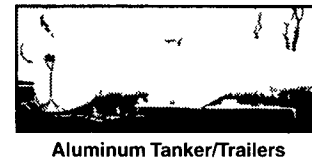
Michigan Loader Model L30
 Quick Coupler, Comes With 1 Yard Bucket and 60" Forks, Runs Excellent



Kalmar Forklift, propane powered, 4435 lb capacity, 42" forks, 192' lift, cushion tires, 2194 hours



(9) 40' - 45' 1970's & Newer Steel Flatbed Trailers (also have drop deck trailers) some have sliding tandems, all in good condition \$2 500/Ea and Up



Aluminum Tanker/Trailers
 7500 gal and up



84 Ford LN800
 5 spd, 2 spd rear, air brakes, 31,500 GVW

TAKE ADVANTAGE OF YEAR-END PRICING!

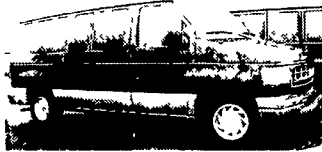
30/40/45 Four Way Auto Sales

Rt 23 New Holland, PA
 717-354-3199

Financing Starting at 5.99%

Toll Free 1-877-999-VANS (8267)

VANS, VANS, VANS - All Makes, All Models. • Commercial customers welcomed. • Warranties available.



01 FORD E-150 CLUB WAGON CHATEAU
 7 Passenger 4.6 V8 Dual A/C & Heat, Privacy Glass, PW, PL, Tilt, Cruise, Cassette, CD, Pseat, Keyless, Quad Captains Blue & Silver 23,000 Mi. #4396

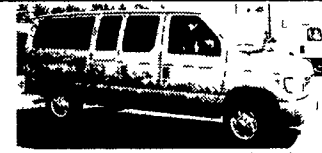
Additional Inventory

7 Passenger

- 02 Ford E-150 Club Wagon Chateau, 7 Pass 5.4 V8 Red/Silver 19,000 Mi
- 01 Ford E-150 Club Wagon Traveller, 5.4 V8 Quad Captains Green/Gray 27,000 Mi
- 00 Chevy Venture Extended LS, 7 Pass 3.4 V6 55,000 Mi Red



02 FORD E-350 SUPER CLUB WAGON XLI
 15 Passenger, 5.4 V8, Dual A/C & Heat, Privacy Glass, PW, PL, Tilt, Cruise Cassette, CD, Keyless, Town Package Green Silver, 11,000 31,000 Mi



01 FORD E-350 CLUB WAGON XLI
 12 Passenger 5.4 V8 Dual A/C & Heat Privacy Glass PW PL Tilt Cruise Cassette CD Pmirrors Keyless Silver 18,000 Mi #4375

8 Passenger

- 01 GMC G1500 Savana SLE 8 Pas 5.7 V8 Blue 28,300 Mi
- (2) 02 Chevy G1500 Express LS 5.7 V8 Victory Red 20,800 Mi
- 00 GMC G1500 Savana SLE, 8 Pass, 5.7 V8 Burgundy 17,600 Mi
- 00 GMC G1500 Savana SLE 8 Pass, 5.7 V8 Blue 31,000 Mi
- 02 Ford E-150 Club Wagon XLI 8 Pass, 5.4 V8 22,000 Mi Silver



02 CHEVY G2500 EXPRESS LS
 12 Passenger, 5.7 V8, Dual A/C & Heat Privacy Glass, PW, PL, Tilt, Cruise Cassette Keyless, Bronze, 26,800 Miles, #4393



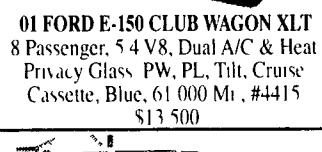
01 FORD E-150 CLUB WAGON XLT
 8 Passenger, 5.4 V8, Dual A/C & Heat Privacy Glass, PW, PL, Tilt, Cruise Cassette, Blue, 61,000 Mi, #4415 \$13,500

12 Passenger

- 99 Ford E-350 Club Wagon XLI 12 Pass 6.8 V10, Green, 7,000 Mi



01 DODGE GRAND CARAVAN SPORT
 7 Passenger, 3.3 V6, Dual A/C & Heat Privacy Glass PW PL Tilt, Cruise Cassette Double Sliding Door, Tan 23,000 Mi #4268



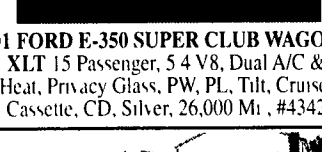
01 FORD E-150 CLUB WAGON XLT
 8 Passenger, 5.4 V8, Dual A/C & Heat Privacy Glass, PW, PL, Tilt, Cruise Cassette, CD, Silver, 26,000 Mi, #4342

15 Passenger

- 02 Ford E-350 Super Club Wagon XLT 15 Pass, 5.4 V8, Silver, 14,000 Mi
- 02 Ford E-350 Super Club Wagon XLI 15 Pass, Silver, 23,000 Mi
- 02 Ford E-350 Super Club Wagon XLT 15 Pass, Green, 32,000 Mi
- 02 Ford E-350 Super Club Wagon Silver, 23,000 Mi



02 CHEVY G1500 EXPRESS LS
 8 Passenger, 5.7 V8, Dual A/C & Heat Privacy Glass, PW, PL, Tilt, Cruise Cassette, CD, Keyless, Maroon, 8,000 Mi, #4414



01 FORD E-350 SUPER CLUB WAGON XLT
 15 Passenger, 5.4 V8, Dual A/C & Heat, Privacy Glass, PW, PL, Tilt, Cruise, Cassette, CD, Silver, 26,000 Mi, #4342



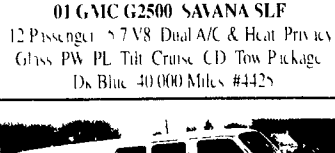
01 GMC G2500 SAVANA SLE
 12 Passenger 5.7 V8 Dual A/C & Heat Privacy Glass PW PL Tilt Cruise CD Tow Package Ds Blue 40,000 Miles #4425



00 FORD E-350 ECONOLINE HI-TOP
 7 3 Powerstroke Diesel, A/C 9500 GVWR 110 Inverter White 49,000 Mi #4395



00 CHRYSLER GRAND VOYAGER SE
 7 Passenger 3.3 V6 Dual A/C & Heat Privacy Glass PW PL Tilt Cruise Cassette Double Sliding Door Blue 35,000 Miles #4355



01 FORD E-350 ECONOLINE
 5.4 V8 A/C, 9500 GVWR, Side and Rear Windows, White, 55,000 Miles #4336



02 FORD E-250 ECONOLINE
 5.8, A/C, 8600 GVW, Side & Rear Glass, 4 10 Ltd Slip Rear, White, 4,000 Mi, #4205