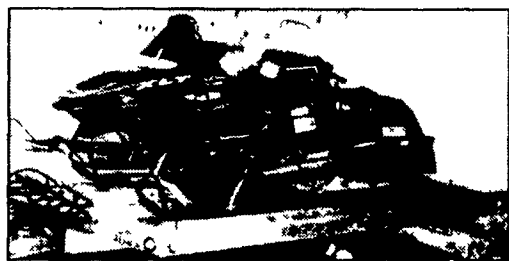


**BUY,  
SELL,  
TRADE  
OR  
RENT  
THROUGH  
THE  
CLASSIFIED  
ADS  
IN  
Lancaster  
Farming**

**PHONE  
717-626-1164  
OR  
717-394-3047  
FAX  
717-733-6058  
Mon., Tues.,  
Wed., Fri.  
8 AM to 5 PM  
Thurs.  
7 AM to 5 PM**



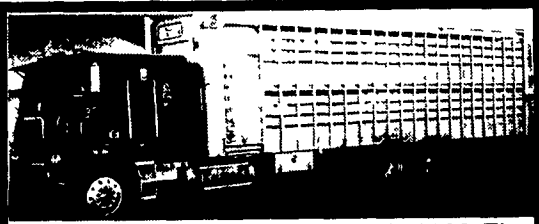
**33 RECREATIONAL  
VEHICLES**



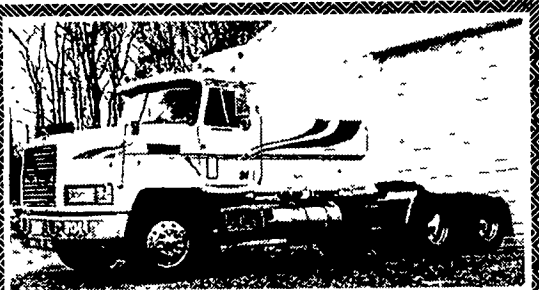
**FOR SALE**

1998 Polaris XLT Special Snowmobile, 70 mi. 1995 Yamaha Phazer II Snowmobile, 900 mi., and 1999 Load Rite Snowmobile Trailer, 30 mi. All in like new condition  
**\$8,000 firm. Call (570)754-7022**

**35 TRUCKS  
AND  
TRAILERS**



**1983 Cabover Freightliner with 1993 Eby 31 foot cattlebox Crankup deck 400 Cummins/13 speed with overdrive 54,000 GVW Air ride cab and suspension Side and back roll-up doors Back drop ramp Very good condition Will separate \$16,000/obo Evenings (570)966-1610**



**1990 Mack**  
Mack 350 HP with Jake, 9 Spd., 38K Rears, Air Ride Susp., New Tires, Alum. 22.5" Wheels, Excellent Condition, Best Offer  
**610-670-6398**



**1995 Freightliner F160 NON CDL**, Cummins Engine, 18 Ft Flatbed, Very Clean Truck, **\$14,900 OBO**  
**2001 Appalachian**, 32FT, 20,000 lb., Gooseneck Trailer, **\$5,700 OBO**  
**(717) 729-2139**



**1991 Diamond Reo**  
Model #C11664DB Engine Cat 3406B Trans rear of 117088LL, GVW 65,400, J&J Model 40291, 17 1/2 aluminum dump bed

Also: Diamond Reo's with Rock or steel Beds!! You pick Aluminum Rock or Steel **\$22,250 each**  
**Call Steve (717)263-8518**

**RIFE MOTOR CO., INC.**  
768 N Franklin St Chambersburg PA 17201  
Ask For Steve Bender  
Fax (717) 263-4293 • Phone (717) 263-8518



**34 AUTOS**

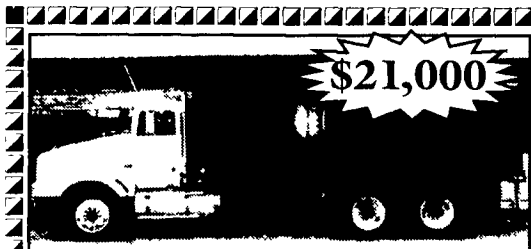
Vans for handicapped '96 & '93 Dodge Caravans . '84 Dodge. 717-597-2292

'99 Chevy Malibu LS, 4 dr, V6, auto, PS, PB, PW, PDL, cruise, tilt, air, 38,000 one owner miles, new radials, black, \$8,975. 717-733-2873

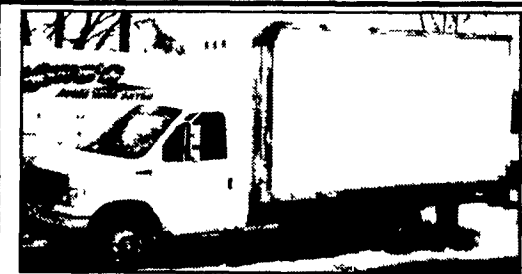
**33 RECREATIONAL  
VEHICLES**

Polaris Ultra SP, 1996, studded, exc cond, very clean, 4K mi, \$2,700 OBO. 215-721-2215.

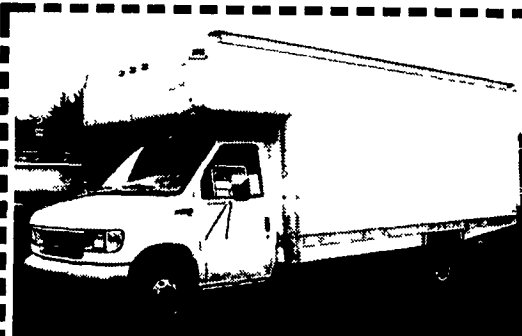
1990 Elite 36' diesel, 300 hp pusher basement Class A, many extras, Mint Cond \$70,000; 717-776-4464.



**\$21,000**  
**1991 IH 425 Cat,**  
15-Spd., USA 20' Silage Bed, Elec. Roll Tarp  
**(717) 532-2893**



**1995 FORD E350 14 FT. BOX VAN**  
7.3 Diesel, Auto, A/C Very Nice Van Only 56,000 Miles One Owner  
Asking \$14,500 717-738-2262



**1996 FORD CUBE VAN F-350**, 119,000 Miles, 7.3 L Power Stroke Diesel Auto A/C, Cruise, 17' Body w/Attic, Very Nice  
**\$11,500 (215) 285-5987**



**1992 UD 1800**  
16' Dump 17,900 GVW  
**\$5,000 717-629-2844**  
New Holland



**'96 Peterbilt**  
6WD, 8-Spd. Trans., 10 Yd. Mixer  
**\$24,500 with or without mixer**  
**717/336-7375**



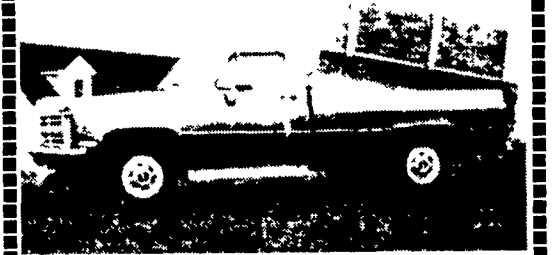
**1991 Diamond Rio**  
Model #C11664DB Engine Cat 3406B Trans rear of 117088LL, GVW 65,400, J&J Model 40291, 17 1/2 aluminum dump bed

Also: Diamond Rio's with Rock or steel Beds!! You pick Aluminum Rock or Steel **\$22,250 each**  
**Call Steve (717)263-8518**

**87 Mack MS300**



6 speed & 2 speed transmission double frame engine, rebuilt by Interstate Mack, Air brakes, 35,000 GVW, New paint, nice clean truck, \$7,500  
**717-597-5473**  
Flat bed also available



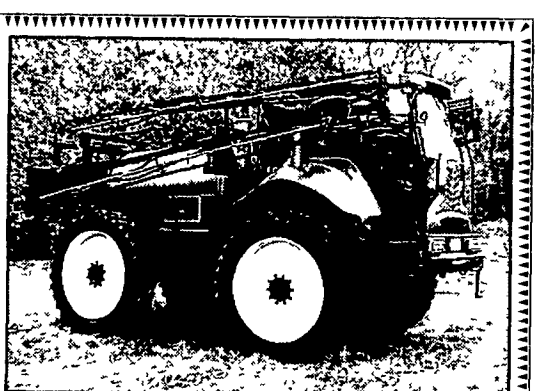
**'86 Chevy truck**, 8600 GVW tow package. with hyd. electric pump, 350 engine, AT.  
Truck **\$2,500** Willing to separate.  
Both ... **\$3,800**  
**717-367-2520**



**1998 Freightliner FLD 120 SD 135,000 Miles**  
2001 Trail King Trailer  
**(717) 629-6194**



**FOR SALE**  
**AG WRAP SALT SPREADER**  
Electric Start Honda Engine, Hydraulic Drive Salt Spreader-Fits in full size pickup  
One Demo Unit Left - **\$2,950**  
Call 800-442-5043 ask for Terry



**1998 GVM Rowcat**, 800 gal. SS tank, 45/80' booms, 1860 hours, excellent machine  
**\$69,900 814-931-9152**



**"Stacking Stuffer"**  
**93 Freightliner Tandem Axle Tractor**, Sleeper Cab, 350 Cat, 9 Speed, Air Ride, Needs clutch, Engine runs good ...**\$2,790/OBO**  
Call Ray 856-424-6300 www.domsint.com