

Make A Good Year End Investment With Quality Sunflower

Binkley & Hurst Bros. Offers Quality That Exceeds!

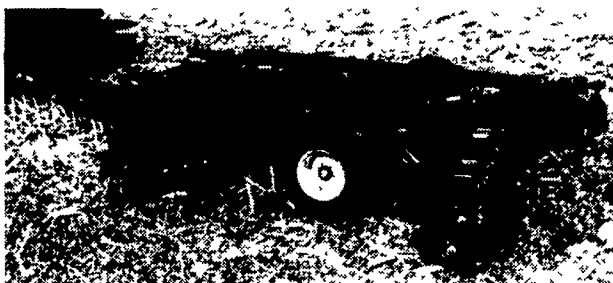
SOONER OR LATER YOU'LL CHOOSE A...



HUNDREDS OF YOUR NEIGHBORS ALREADY HAVE!

CHISEL PLOWS • LAND FINISHERS • COULTER RIPPERS • DISKS • FIELD CULTIVATORS

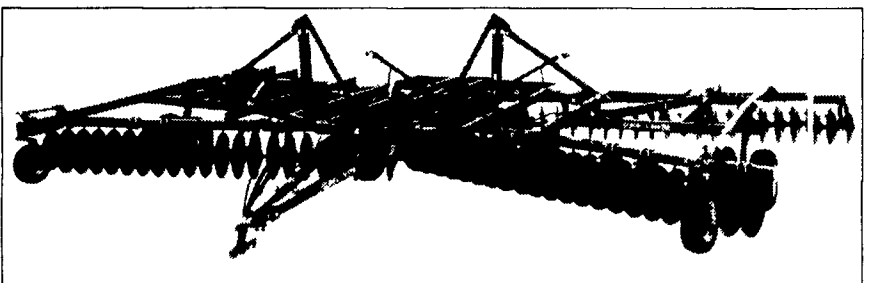
Ask About Our 3 Year Warranties!



Model 1211 for Smaller Horsepower. The Model 1211 Disc Harrow is Sunflower's discing answer for America's smaller farmers. It is available in rigid models only and matches tractor horsepower in the range of 110 and lower. With exception of gauge wheels, the 1211 has all of the same outstanding features common to the 1233. It's tough, heavy and capable of performing primary and finish discing operations. You'll like the way it cuts the soil, leaving your field in a ridge free condition. The 1211 truly meets the toughest standards, earning it the label of America's best built disc. Cutting widths available from 10' to 15'.

Sunflower - The best performing discs on the market today!

They Cut & Level, Level, Level
High Quality/ High Performance
From sizes as small as 10' wide up to 42'



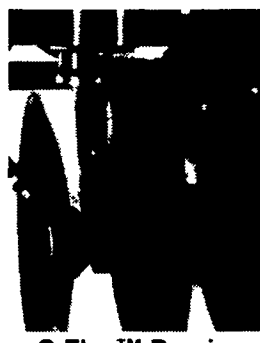
Model 1233 Disc Harrow. The Model 1233 disc harrow is a medium weight disc that capably handles primary-through-finish-discing operations. An all welded frame features even weight distribution for uniform penetration, and the three flexible sections assure that rough, rolling and terraced ground will be tilled evenly and smoothly. Large tires provide excellent flotation, unmatched depth control and the base for level discing. Like all Sunflower Discs, the 1233 is loaded with features that give it a definite edge over competitive brands. These features enable the 1233 to always provide a level job of discing, regardless of terrain, discing depth and/or soil condition.



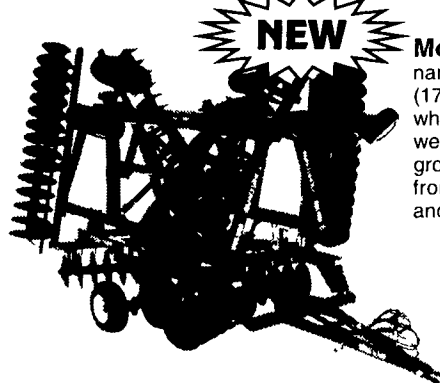
Maintenance-Free Lift System



Gauge Wheels For Leveling Perfection



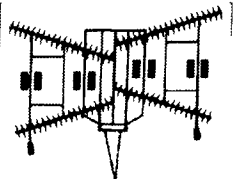
C-Flex™ Bearing Standard



NEW

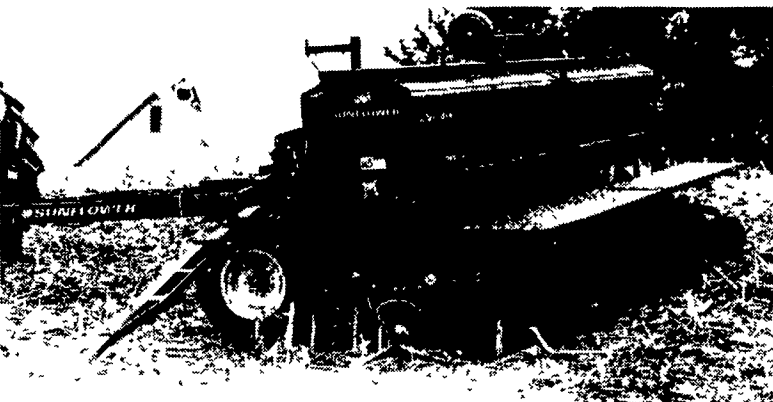
Model 1434 Disc Harrow. Unit folds to a narrow transport width (13' 5" on 19-28' models) (17' 8" on 29-35' models). Walking tandem wheels on center section effectively distribute weight evenly for increased tire life. Increased ground clearance during transport makes travel from one field to another much easier.

Staggered Overlapping Gangs



The One To Own
 Binkley & Hurst Bros. Offers Quality That Exceeds!
 Sooner or Later You'll Choose A Sunflower!

MAXIMIZE YOUR SEEDING PERFORMANCE WITH A SUNFLOWER HIGH PERFORMANCE DRILL FROM BINKLEY & HURST BROS. INC.



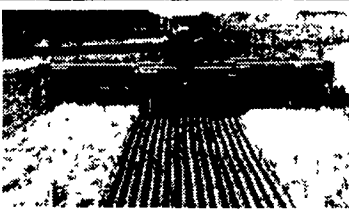
9000 Grain Drill
 Capable of no-till, min-till or conventional seeding

The 9432 Three Section Grain Drill from Sunflower features a unique design to deliver unmatched flexibility and seeding performance in all field conditions.

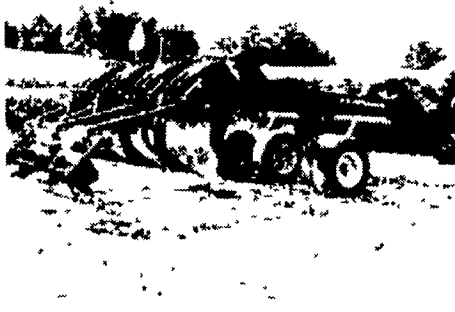
The staggered box design eliminates any box contact in uneven terrain. Team this new design with the industry's most capable opener and you'll discover a new level of performance.

- Two opener designs available to meet your needs featuring no-till or min-till capabilities
- Exclusive soil control device directs soil into seed trench ahead of the press wheels
- Three axis hitch allows greater flexibility between tractor and drill
- Available in 30' as well as 40' working widths

Several 10, 10 1/2, 15



Available Model 4212-7
 Coulter Chisel
 with 4 Deep Till Shanks
 & Chopper Reel



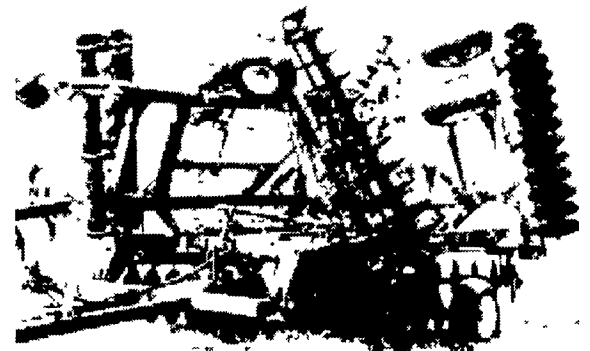
4200 Coulter Chisel

Voted #1
 by a panel of farmers at the Farm Progress Show

When complete soil fracturing is needed at a depth of 12" or less, the Sunflower 4200 Series Trash Mulcher is your best choice.

Designed with shanks every 15" and coulters blades every 7 1/2", not much gets by this tillage tool. The 4200 series is built like a tank and can perform well in challenging field conditions. It's time to discover a new level of performance.

- Front Mounted Single Point Depth Control is easy, safe and precise
- Standard walking tandems
- Rigid Shear-Bolt or Auto-Reset shanks available
- Sizes 8'-9" through 28'-9" available
- Coulters can be hydraulically raised



Ask About 3 Year Warranty!

5000 Field Cultivator

Prepare a bed as you would for yourself

The Sunflower 5000 Field Cultivator ranks as one of the best overall cultivators on the market today.

Structural design, trash clearance and depth control are just three reasons why this unit has attained such a high rating. A heavy-duty 3"x4" rectangular welded steel frame provides the rugged durability it takes to withstand the stresses created by today's high horsepower tractors.

It's time to discover a new level of performance.

- 190 lb Point load spring shank assembly or a 2 piece S tine shank available
- Heavy-duty walking tandems standard in all locations



- Front Mounted Single Point Depth Control is easy, safe and precise
- Available in 18' through 63'6" working widths

Sizes In Stock
18 Foot and 25 Foot
Super Year End Discount

BINKLEY & HURST BROS. INC.

133 Rothsville Station Rd., P.O. Box 0395
 Lititz, PA 17543-0395
 (717) 626-4705 • 1-800-414-4705 • Fax 717-626-0996

