

CENTRAL PENNSYLVANIA FARMS, FARMETTES, LAND AND CABINS

Our Farm and Land Division currently has many farms, farmettes, land parcels, and cabins available in central Pennsylvania. We would be happy to send you a free farm and farmette list and/or rural land and cabin list.

Call for a complete farm and farmette inventory.

Farm and Land Division

Fred Strouse (814) 364-1705
 Mel Rocky (814) 466-6688
 George Demchak (814) 625-9151
 Tim Lake (814) 364-1327

2300 South Atherton
 State College, PA 16801
 (814) 234-4000
 1-800-876-3395



Perry Co. historically correct mid 19th century hand hewn log home, square notched 24x20, 1 1/2 story w/16x20 addition. Beautiful summer beams w/tenon floor joist system, exposed in both. Let us build you this on your dreamable property. Starting @ \$91,000. Come visit our Colonial Log Village currently under construction featuring 18th & 19th century hewn log homes nestled among the beautiful Tuscarora Mts. 1 hr. from Harrisburg. Humble Restorations building history, 717-734-3526.

Berks County



Kempton area, Kutztown School District

153 acres, 70 tillable, 50 woods, balance pasture w/high tensile fence. Stone farmhouse w/addition and detached summer kitchen, 50x60 bank barn, 30x50 implement shed. Many other outbuildings. Buildings sit back a long lane on a quiet road. Land is slightly rolling and adjoins the Blue Mountains.

Montgomery County



Swankville Area - Colonial and dog kennel on 8.5 partially wooded acres, 4 BR, 2-1/2 baths, updated kitchen & baths. New roof, Pella windows, new hardwood floors, 40+ run dog kennel with oil heat and a/c. Two large grooming areas & office. Remodeled 3 BR apartment over kennel office. Zoned for kennel use - great business opportunity. Asking price \$590,000.

Call Hiram Hershey, Broker
 Thomas Hershey, Realtor Associate
HERSHEY FARM AGENCY, INC.
 1-800-880-3831

CUMBERLAND COUNTY



114A general farm with a good set of farm bldgs & Monongahela silt loam soil. Call for this nice farm. Red Rose Realty, Dale Landis, 717-581-8361 or 717-656-2281

Snyder Co. Farm

110A with a 96' bank barn and a loose housing shed 130' long 20 x 80 Harvester silo, 70' implement shed. A nice big kitchen with 4 BRs, all paneled.

For more information call:
 Dale Landis at (717) 581-8361
 or Office
RED ROSE REALTY
 (717) 656-2281

FOR SALE BY OWNER

Perry Co., private community w/lake, 2.67ac bordering state forest, 1 1/2 bedroom, 2 baths, appliances included, w/full wrap around deck, \$89,900
 717-438-3835 for appt.

Missouri Ozarks Mountain Splendor

Retreats & Ranches
 Back Home Real Estate
 Rt. 3, Box 251-D1
 Ava, Missouri 65608
 1-800-938-8800



78 Main Street,
 Wellsboro, PA 16901
 (570) 724-5921

EMAIL: wilk1dunn@aol.com
 INTERNET: www.century21.com

Wilkinson-Dunn Co.

TIOGA COUNTY

W-1977 The price is right! On this 2 story home 3 bedrooms, lot adjoining Army Corps lands at Tioga River. Deck and enjoy views, above ground pool and 2 sheds. Mansfield \$48,900

W-1982 Super house for sale in Westfield! Nicely remodeled, new paint inside and out. 3 bedrooms, 1 1/2 bath and 2 car garage. \$61,500

W-1983 Come take a look at this well-built red pine rancher located on 2 +/- acres between Wellsboro and Arnot. 2 bedrooms, 1 bath, wonderful front porch and new 2 car garage. Charleston Township Home Warranty \$98,500

W-1985 Majestic home on 2.39 acre lot in subdivision close to town. Features include 5 bedrooms, 3 1/2 baths, complete finished basement, formal dining room and living room, plus mountain views. Delmar Township \$219,000

W-1986 Step back in time. Downtown Wellsboro. Large 2 story with Victorian features, curved stairway, pocket doors, original woodwork, some wood floors under carpet, sun room, all this plus an apartment with 1 bedroom. \$152,500

W-1987 Look! This 20 acre parcel has a livable mobile with addition 5 bedrooms, and 1 bath. Call Now! This will be gone. Farmington Township \$69,500

PRIME INDUSTRIAL REAL ESTATE FOR SALE

16000sq ft clear span w/offices, Handicapped accessibility, Loading docks, Overhead doors, Heated floor.
 12 Acres total
 8 Acres zoned Industrial
 4 Acres zoned Agriculture
 Possible sub-division, build on Ag zone
 Southern Lancaster County
 Easy access to I-95 & Rt. 1
 High Traffic Count
 Uses include: Retail, Wholesale, Light Manufacturing, Warehouse, and more.
CALL 717-471-3940

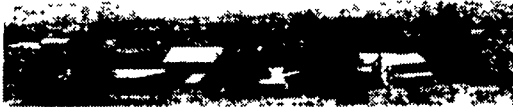
MISSOURI

FREE Brochure of dairy farms and ranches
 Low taxes, long growing season.
 417-469-2316
 Baker Realty
 Box 36
 Willow Springs, MO 65793
 http://www.bakerealty.com

FOR SALE OWNER
 12.5 Acre Farmette
 30x48 Bi-level House,
 30x48 Steel Pole Shed,
 Orchard w/1,200 trees, North Central Snyder Co. Close to Union Co. Line
570-837-3735

CALL COLDWELL BANKER

FARM & RURAL PROPERTY DIVISION
 NEW! FREE VIDEO TOURS AVAILABLE ON CD
 CENTRE COUNTY



Nittany Valley - 102 acre general farm with 77 acres tillable, 7 acres pasture, 16 acres woodland, and 2 acres site area. Very nice home, two story bank barn, implement shed, nice setting away from traffic. View our complete brochure and 30 picture slide show at www.cbcr.com or call for details. Price Reduced to \$449,500
FREE CD video tour available

If You Want the Most Complete Farm and Rural Property Marketing Plan Available Visit the Farm and Rural Property Division at www.cbcr.com View farm, farmette, rural acreage, woodland and cabin brochures and slide shows. If you don't have Internet access call toll free for detailed brochures and list.

HUNTINGDON AREA



Huntingdon Area - 11.3 acre property with excellent 28x42' ranch home, approx 4 acres open, balance wooded. Small stream, quiet, private setting, easy access. 30 minutes to State College \$165,000
FREE CD video tour available.

HUNTINGDON COUNTY



New Listing Warriors Mark Area - 17 acre general farm, 69 acres tillable, 33 wooded, 2 acres site, 2-story bank barn, small dairy barn, 2 silos. Nice setting, small stream, no house \$295,000. Complete brochure and 26 picture slide show at www.cbcr.com or call for details.
FREE CD video tour available.



Don Myers 814-422-8111
Dale Sherman 814-692-8149
 e-Pro Certified
 (Residence Numbers)

UNIVERSITY REALTY

COLDWELL BANKER 126 E. Foster Ave., State College, PA 16801
 800-669-4925 Toll Free

THE REAL ESTATERS OF MANSFIELD

1671 S. Main St., Mansfield, PA 16933
 (570)662-2138 • Evening (570)662-2363
 realmans@epix.net

MT. TOM HIDEAWAY

3.02 surveyed all wooded acres on Mt. Tom. Approved perc site & privy in place now. Less than 10 minutes to Pine Creek, PA Grand Canyon & State Land. Association maintained roads w/gated access to assure privacy. Just \$15,700. M-1656

VICTORIAN HOME

Nicely remodeled 2700 sq. ft. home w/modern amenities. 4 bd rms., 1.5 baths, gas heat, vinyl siding and carpet. Appliances included. Tioga location w/huge backyard. Reduced to \$109,500. M-1630

INGROUND SEPTIC SITE

On newly surveyed 1.68 acre parcel w/319.47 ft. of frontage on paved Old State Road in Sullivan Twp. Borders stream on west side. Utilities on site or nearby. Minutes to Mansfield & Troy. Mansfield schools. No mobile homes. Just \$16,900. M-1598

FINE COUNTRY HOME!

On 66+ acres w/survey in progress. Mix of fields, pasture & woods. Long frontage on paved country road. Completely remodeled 3 bd rm., 2-story, 2 bath farmhouse. Great bank barn. NY, PA border location. Minutes to Mansfield, Elmira, Corning. \$199,000 M-1644

ATTENTION HUNTERS!

50 surveyed acres w/secluded location for camp or your dream home. Nice mix of woods & open, rolling w/easy access. Paved road frontage w/new crushed stone driveway to single-wide camp w/electric service. Standing Stone Township - \$85,500 M-1648

ARMENIA TOWNSHIP CAMP

Mobile home on approx. 2 acres within a few hundred feet of State Forest Lands. Wooded lot with existing well & septic. Asking \$30,500. M-1621

SULLIVAN COUNTY CAMP

In Fox Township near Camp Brule & walking distance to State Game Lands #12. Inground septic, electric & 90' well. 1.39 acres w/12x60 old trailer. Fix it up or pull in newer unit or build. Just \$26,500 M-1581

IMMACULATE COLONIAL HOME

2880 sq. ft. over full basement in Sullivan Twp. on paved road, 4 bd rms. & 3.5 baths. Pine floors, 2 fireplaces, country kitchen. Vinyl siding. Appliances included. 6.7 deeded acres. 10 miles to Mansfield and Troy. (Mansfield schools.) (Would make a great Bed & Breakfast.) Just \$189,000. M-1558

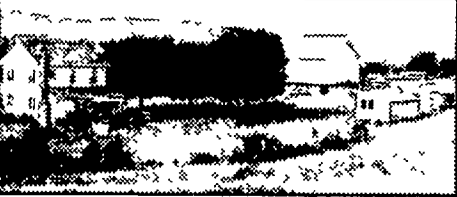
We've Moved - Visit us at
 3703 Peters Mountain Rd., Halifax, PA



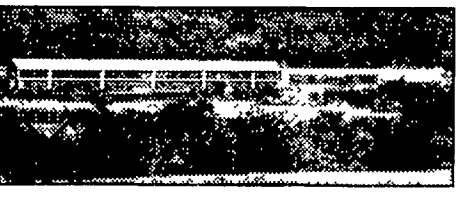
907 - HALIFAX - 73+/- ac farm w/ totally remodeled log house, new hardwood floors & ceramic floors. Great country location, new septic. A must see! \$395,000.



945 - HALIFAX - Farmette w/8+ ac, stocked spring fed pond, 3BR, 2 bth. Remodeled farm house w/great room & new kitchen. Tranquil setting. Bank Barn, workshop, gar & more \$168,500.



946 - HALIFAX - Farm w/40.9 acs on 2 parcels. Totally redone house & barn, new kit & updated bth 4 BR. Large pond on south side of road. Great view \$415,000.



960 - HALIFAX - Chicken farm w/35+ acs. Farm ground 2-story 44x260 all auto barn. \$40+ income from barn 1991 3 BR 14x76 mobile on farm. Good opportunity. Farm ground tented \$299,900.

Century 21 Carl Snyder
 Please Call Carl or Carmen 717/896-8808,
 or Carl 717/979-8042
 www.century21snyder.com

160 acres farm
 80 tillable,
 80 woods
\$1,300,000.00
 Biroqua, WI
608-637-8837

3.76 Ac wooded,
 zoned Village/
 residential, possible
 8 lot subdivision,
\$79,900
4.76 Ac zoned
 Light industrial/
 commercial,
\$79,900
1-800-618-7433
 Ask for Bob

NEED A MORTGAGE?

We are the alternative to conventional institutional mortgages. Our money comes from private sources. Therefore, we can be flexible in arranging mortgages to suit individual requirements. Also, possible leases with options to buy. If a mortgage is too big for the Red Neck Mortgage Company, we have direct access to several major Wall Street firms where nothing is too big.

RED NECK MORTGAGE CO.
 Licensed PA Dept. of Banking
814-355-8500