

35

**TRUCKS
AND
TRAILERS**

7511 Allentown Blvd.
Harrisburg, PA 17112

**75 TRUCKS
IN STOCK**

**AFFORDABLE
CARS AND TRUCKS, INC.**

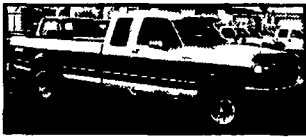
"You Gotta Believe!!"

New Exit #72A, Rt. 81 N; Rt. 22 East of Harrisburg; 3 Miles North of Hershey Park

717-652-1925
FAX 717-652-4888
www.autotrader.com/view/
affordable car and truck

92 FORD F250 XLT 4x4

Ext, Longbed, 7.3 International DSL, AT, AC, PW, PDL, Stereo, New Radials + Flawless Looking + Driving Truck, 150K
Sale \$9,500



94 FORD F250 XLT

4x4 Ext Cab Long Bed, 7.3 International Turbo Dsl, AT, PS, PB, AC, Tilt, Cruise, Tow Setup & More, 99,000 Mi, Very Well Cared for Truck!
\$12,995



95 FORD F250 XLT 4x4
Ext Longbed, Powerstroke, DSL, 5 Spd AC, PW, PDL, Tilt, Cruise & More, New Clutch & Flywheel, Like New, Black Body, Must See & Drive, 100,000 Mi.
\$12,995



96 JEEP GRAND CHEROKEE 4x4
Limited Black/Black Leather, 6 Cyl, AT, AC, PW, PDL, Stereo, New Radials, Beautiful Shape, 80,000 Mi.
\$8,495



97 DODGE RAM 2500 4x4
LARAMIE SLT Ext Longbed, Cummins Turbo, AT, AC, PW, PDL, Tilt, Cruise, Stereo, CD/Cassette, Only 80,000 Mi, Navy Blue & Immaculate, Nicest One I Ever Sold Here At Affordable
\$18,500



96 CHEV. SUBURBAN SLT 4x4
6.5 Turbo Dsl AT Dual AC 3rd Seat, Interior Full Leather, Exterior All Black 120K Looks & Drives Like New!
\$13,995



90 CHEV. 2500 4x4 H.D. SCOTTSDALE
8600 GVW 350 V8, AT, AC, Cloth Seat Extra Clean Truck with New Tires Brakes + Pa Insp 100,000 Mi.
\$5,995



96 FORD F350 XL 4x4
7.3 Powerstroke Dsl, AT, PS, PB, Cloth Seat, Only 60,000 Actual Miles Superb Condition, No Air
\$14,995
With Air **\$15,995**



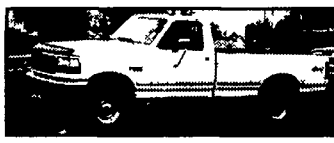
92 FORD F350 XLT 4x4,
1-Ton Crew Cab Longbed, 7.3 International DSL, 5 Spd, PW, PDL, Tilt, Cruise, AC, & More, All Black, New Clutch & Transfer Case, Runs & Looks Like New, Well Cared For, 200,000 Mi, **\$10,995**



83 CHEV. 1500 4x4
305 V8, AT, AC, Real Clean Truck - All Rebuilt! 100,000 Mi
\$4,500



89 CHEV. 1500 SILVERADO 4x4
Longbed, 350 V8, AT, AC, All Power, Real Good Looker & Runner, No Rust, Real Clean! 140K
\$3,995



97 FORD F250 XLT 4X4
AT AC PW PDL Cruise 8600 GVW Tilt 351 V8 Tow Package & Alloys 111K Real Clean Truck Must See!
\$8995



93 MERC VILLAGER
V6, AT, AC, PW PDL Cruise & Tilt Very Clean Van, Dark Green, 1000 000 Mi
\$3,995



98 CHEV 3500 H.D. 4X4 SILVERADO
Crew Cab Vortec 454 V8 AT AC, PW, PDL Cruise & Tilt All Black Looks & Drives Like a New One! 10 000 GVW 100,000 mi **\$12,995**



97 CHEV. 1500 SILVERADO 4x4 EXT.
Shortbed 100 000 Mi Vortec 350 V8 AT AC PW PDL Leather Interior & Superb Shape Wholesale Priced!
\$10,995 Firm



99 DODGE RAM 2500 ST
4x4 Quad Cab Loaded, 4 Door 360 V8 Gas, 8800 GVW AT, AC Cloth Seats, 105 000 Mi Good Clean Truck
\$12,995



89 FORD F250 XLT 4X4
AT AC, PW, PDL, 351 V8 Tilt Cruise & Tow Package 8600 GVW Real Clean Truck 111 000 mi
\$3995



96 GMC Yukon SLT 4x4
Vortec 350 V8, AT, Dual AC, All Power Barn Doors Very Sharp And Clean Vehicle 90K
\$10,995



88 CHEV. 4x4 Stepside
V8, AT, SILVERADO + Full Power, 100,000 Mi, Clean Truck
\$5,995



99 FORD F350 LXT 4X4
Superduty 7.3 Powerstroke DSL, 6 Speed, AC, PW, PDL, Stereo, Cruise & Tilt Mint Condition, about 90K
\$18,995



00 FORD F350 LARIAT
4x4 Quad Longbed, 1-Ton Dually 7.3 Powerstroke, AT, AC PW, PDL Stereo Alloys, Mint Condition, 105K Must See!
\$22,995



90 FORD F250 CUSTOM
6 Cylinder, 300 Motor, Automatic, Nice Clean Work Truck for Fall, 100,000 Mi
\$2,400



85 CHEV. 1500 SILVERADO 4x4,
350 V8, No Rust, AT, AC, PW + More, Looks Like New, 100,000 Mi.
\$4,995

LESHER SALES & SERVICE
2700 Cumberland St. Lebanon, Pa. (Route 422 West)
717-273-4535
website:www.leshermacksales.com

New Trucks

(1) 2003 CH613 Day Cab, E7-427, 10-Spd., Air Susp., 169 W.B.

(1) 2003 CH613 Day Cab, E7-427, 10 Spd., Air Susp., 163 W.B.



Used Trucks

(1) 1994 CH613, Day Cab

(1) 1995 CH613, Day Cab

(1) 1995 CH613, 42 in. Highrise

Many other Trucks in Stock - Call for Details

Buy Road Ready Quality.

1327 Bulldog Drive • Allentown, PA • 800-628-2362
Cornell Hardy/David Moyer



1996 International 4700, International DT 466 175 HP 6 Spd 25 950 GVW 277 242 Miles A/C P/S Stk# 557742



1995 International 4900 International DT 466 210 HP 6 Spd 32 700 GVW A/C P/S 24 377 109 Miles Liftgate Stk# 525467



1996 International 4700, DT 466 175 HP 6 Spd 25 500 GVW 16 P/S 324 946 Miles Ther STB C12 20DN Stk# 564938



1995 Ford LA9000, CAT 3176B 300/1800 300 HP Full REX117100C O/D 10 Spd P/S Air Rik 391 143 WB 275 707 Miles A/C Stk# 522206



1995 Ford LN8000, 210 HP 6 Spd 1D 1460 (210/2400) P/S A/C 22 287 593 Miles 33 000 GVW Liftgate Stk# 515772



1994 International 4900 DTA 466 210 HP 6 Spd A/C P/S 33 000 GVW 159 100 Miles 5.7 Yard Dump 3/16 Steel Construction 6 Panel Heavy Duty Tailgate 1 Asphalt Chute 1/2 Cab Shield 16 Ton Hoist 1 Year Body and Hoist Guarantee Stk# 491711



Peace Of Mind From A Name You Can Trust.

- Complete Maintenance History With Each Vehicle
- 30 Day Powertrain Warranty
- Large Selection From Our Fleet Of Over 160,000 Vehicles



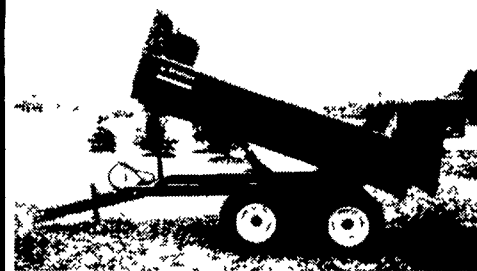
1-800-USED-TRKS 1-800-873-3875 Visit our Web site at www.usedtrucks.ryder.com

FARM DUMP TRAILERS

(Direct from the Manufacturer)

6-Ton Dump Trailer

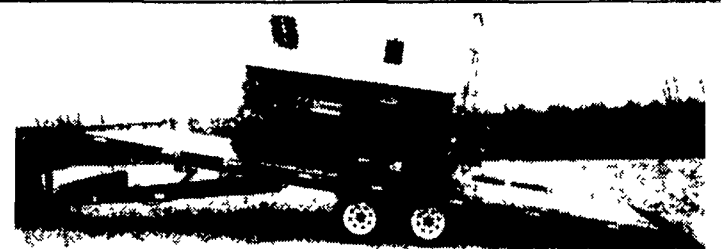
- 10 ft x 7 ft
- Floating Tandem Axle
- 3 ft Front, 3 ft Tailgate & Grain Chute
- 16 in Extendable Sides
- 10 ga Floor & Sides
- 11Lx15 Flotation Tires
- 2-Way 4 in x 24 in Hydraulic Cylinder includes hoses



\$3,200 U.S./delivered

7-Ton Road Dump Trailer

- Fifth wheel or bumper type
- 16 ft x 8 ft deck 3 ft front rack and pockets side & back
- DC hydraulic pump & battery mounted in locking tool box
- 12 ton drop leg jack
- 10 ga floor
- 6x3x3/16 tube main frame
- Sealed beam lighting
- 7000 lbs per axle rating
- Electric brakes on both axle
- 16" tires on white spoked rims
- \$6400 U.S delivered in Northeast U.S.A



Tilt & Load Trailer 10,000 to 14,000 lb. Capacity
Excellent for loading low riding equipment various lengths available.

- DC Hydraulic pump includes deep cycle marine battery mounted in toolbox
- 7000 lb drop leg jack
- 3" channel cross members every 16" centre
- Pressure treated wood floor
- Sealed beam lighting
- Sand blasted, epoxie primed & painted
- 11 degree load angle on 24 ft trailer

BERKELMAN'S WELDING

RR 7, AYLMEY, ONTARIO, CANADA N5H 2R6
(519) 765-4230