

35

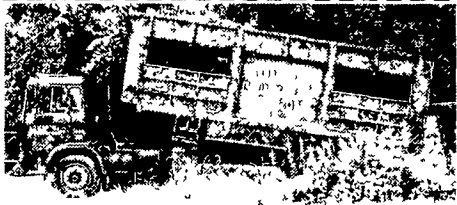
TRUCKS
AND
TRAILERS

• **Brand New Mack Groom Cab**
\$6,000/OBO

• **88 Volvo White**
tandem axle, new paint, gd tires
11R-22.5, PS, 9spd, 300 Cummin, A/C w/tintle hook
\$5,000/OBO

• **2002 - 185 Ingersol**
air compressor,
240 hrs w/ Titan sand blasting unit
Best Offer

(443)506-7587 - Harold



1984 Mack Midliner

Steel recycle body Can also be flatbed or stake body dump
Other trucks available

Please contact Joe
610-942-2707



**DECK-OVER
TRAILER**

8' x 17' **\$3,695.⁰⁰**

- 3' Leveldeck/Beavertail *No Lifting Required
- 10k GVW
- 2-Dexter 5k Axles
- 5' Ladder Ramps w/Spring Assist 'Too easy
- 2' x 10' Treated Lumber Deck
- Durable Polyurethane Finish
- Heavy Duty Frame Construction

Many sizes and options available

LANCHESTER
TRAILER SUPPLY
3220 East Gordon Rd., Gordonville PA
717-768-0663
sales, service, parts, installation

**FLATBED
BODIES**

Lengths to 32', choice of 5 widths

GRAIN BODIES

Lengths to 24',
landscape and
general
purpose
dumps to
12'

LANDSCAPE BODIES

Lengths to 12' We'll build to your specs!

Eby is the leading manufacturer of aluminum bodies and trailers for agri-transportation. Our products are designed for superior strength, reduced weight for greater payload capacity, minimum maintenance and higher resale value. In addition to premium standard features, we offer full custom options built to your specs.



**IN ALUMINUM BODIES
EBY BUILDS IT**

Blue Ball, PA
800-292-4752



YARNALLS Equipment Co.

4171 Horseshoe Pike (Rt. 322), Honey Brook, PA 19344

Call Today Toll Free:
866-228-0408

Over 100
Trailers
In Stock

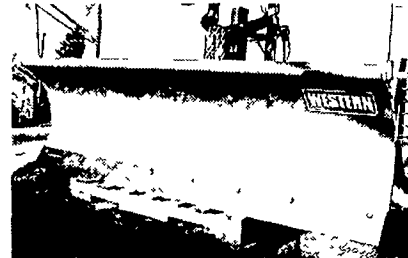


WORTHINGTON

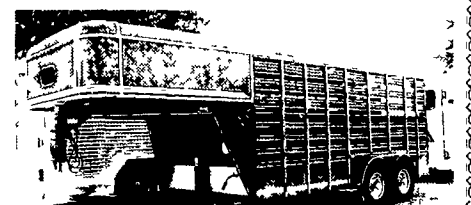
**CUSTOM ORDERED ENCLOSED TRAILERS
IN AS LITTLE AS 3 WEEKS!**



Exiss 4 horse head to head -
beautiful, side load / rear tack
2-7K axles, **\$25,255 -**
6 Horse Available Too



Western Ultra Mount
7 1/2 Foot Snow Plow
From **\$3,950 + Installation & Tax**
ONLY 10 LEFT



Bison Steel Horse and Stock
Trailers. Always in stock.
From **\$2,995.**



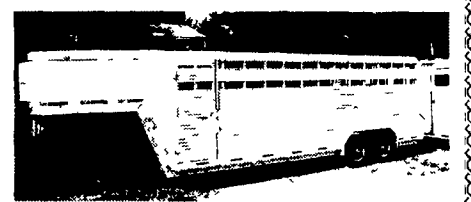
Belmont and Big Tex Open Trailers
4 ft. w x 8 ft. L to 8 Ft. x 20 Ft.
Always in stock - Let's Deal
From **\$500**



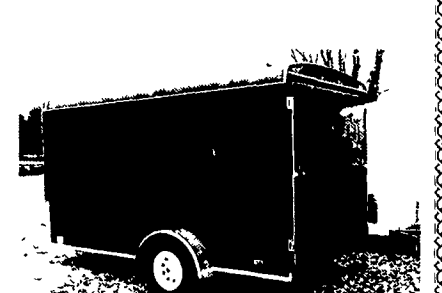
Exiss Has Arrived



Exiss - Mach 10 Car Trailers
All aluminum const. - white
interior, alum. floor. Awesome,
24-32-40 ft. in stock
From **\$13,000**



Exiss stock trailer, always in stock.
13 ft./16 ft./ 20 ft. - 24 ft. Full fea-
tures - Come See. From **\$7,565.00**



Continental Cargo, 7' wide x 14'
long, single axle with brakes and
ramp door. **\$3,770**



MARLEY GROSS
FORD Inc.
96 North Main St
Spring Grove, PA 17362
Telephone **717-225-4765**
marleygros@adelphia.net

- | | |
|---|-----------------|
| 02 Windstar, 3k SE, V6, AT, PS, PB, PDL,
PW T/C VCR, Red | Call |
| 01 F150 Super Crew Lariat, 5.4, AT AC, PS, PB, PW,
P-seat, moon roof, trailer tow, 30k, black | \$26,995 |
| 01 Windstar LX, V6, Auto, PW, PL Air
Tilt & Cruise, CD, 29,000 mi | \$16,995 |
| 01 F150 Reg Cab, 4x4, XLT, 4.6 AT, CD, PW,
PLX, S/T, 23K | \$19,995 |
| 00 Villager Sport 3.3, Hi AC, OD, PW, PDL,
S/T 59k | \$15,995 |
| 00 Mercury Mountaineer, V8 Auto, PS, PB
AC, PW PL, Tilt & Cruise, CD, Moon Roof
Leather Interior, 22,000 mi | \$21,995 |
| 00 Villager Sport 3.3, Hi-AC, CD, PW, PL,
XST, Moon Roof, 24K Green | \$18,995 |
| 99 F150 Step Side, XL Sport, 4X4, V6, 5 Spd,
AC, Cass, 90k, White | \$11,995 |
| 97 Escort, S/W, 2.0, 5 Spd, PW,
PDL, A/C, S/T, 75k | \$4,995 |
| 97 Ford Explorer XLT, 5.0 A/C, PW, PDL,
PW, S/T, P-seat, CD, 82K | \$8,995 |
| 94 F150 XL, 4x2 4.9 5 Spd A/C,
PS, PB, 109k | \$5,995 |
| 94 Explorer Sport EB, 4.0, AT, PS, PB,
P-seat, PW, A/C S/T 112k | \$5,995 |
| 93 Sable GS, 3.0, A/C AT, PW, PDL,
P-seat, Cass, 72k | \$4,995 |
| 85 Ford F350 Roll Back, 7.5 V8, 4 Spd, 17 ft
Jerr Dan 125k | \$8,495 |

USED CAR BLOWOUT!

- | | |
|--|-----------------|
| 01 Focus SE, 4DR, 2.0, AT, AC, CD, PW,
PLX, T/C, 22k | \$12,995 |
| 00 Focus SE, 4DR 2.0, AT, AC CD, PW
PLX, T/C, 22k | \$10,895 |
| 00 Escort ZX2, 2.0 5 spd, AC, PDL PW,
S/T Cass, 20k | \$9,495 |
| 99 Taurus SE, 4DR, 3.0 AC, PW PLX,
Cass, S/T, P-Seat 27k | \$10,995 |
| 92 Taurus GL, V6, AT PS, PB, AC, T/C PW
PDL Cass PSeat 48K, One Owner | \$6,595 |

0% APR for 60 month 4 dr Explorer - Windstar - Taurus
ALL PRICES INCLUDE FACTORY REBATES



REESE



Financing - Trade Ins - Repairs
Hours: Mon., Tues., Wed., Fri. 8:30-5:00,
Thurs. 8:30-7:00; Sat. 9:00-1:00 P.M.
8 Miles Off Exit 22 PA Turnpike

