

35 TRUCKS AND TRAILERS

'98 Chevy Cheyenne 1500 4x4, 305 auto, PS, PB, cruise, tilt, air, 37,000 one owner miles, dark green, excellent condition, \$13,900. 717-733-2873

'00 Ford Ranger XLT Extended cab, 2WD, 3.0 V6, 5 spd, PS, PB, air, AM/FM cass/CD, 72,000 one owner miles, new radials, dark green, \$6,950. 717-733-2873

'99 GMC SL 3500, 4dr crew cab, 350 auto, PS, PB, cruise, tilt, air, AM/FM, 9,000 GVW, 95,000 one owner miles, new radials, \$13,500. 717-733-2873

'99 Dodge 1500, 8 pass., short whl. base, 3.9 V6, auto, PS, PB, air, AM/FM cassette, 27,000 one owner miles, new radials, dark green, \$9,950. 717-733-2873

'96 Chevy Cheyenne 2500, HD, 3/4 ton, 4x4, 350 auto, PS, PB, cruise, tilt, air, AM/FM cass., 4.10 ratio, limited slip diff., towing pkg., 62,000 miles, new radials, dark green, \$12,900. 717-733-2873

'96 Chevy Cheyenne 2500, 4x4, Suburban, 350 auto, PS, PB, cruise, tilt, air, AM/FM cass., 4.10 ratio, towing pkg., 81,000 one owner miles, new radials, \$12,900. 717-733-2873

'99 Chevy Cheyenne 2500, 2WD, 350 auto, PS, PB, cruise, tilt, air, AM/FM Cass., 8,600 GVW, towing package, 62,000 one owner miles, white, \$10,900. 717-733-2873

'00 Chevy Express LS, 8 pass, 350 auto, PS, PB, PW, PDL, cruise, tilt, dual air, AM/FM Cass/CD, 36,000 one owner miles, new radials, black, \$17,900. 717-733-2873

'01 Chevy Astro LS, 8 pass, 4.3 V6, auto, PS, PB, PW, PDL, cruise, tilt, air, AM/FM cass., 42,000 one owner miles, new radials, burgundy & pewter, \$11,900. 717-733-2873

'84 Chevy grain truck w/ removable sides, 70 series. 8.2 dsl, needs some body work, \$3200 obo. 717-336-7288

Brand new 6' alum-line diamond plate Fiat bed w/ tool boxes for dual wheel truck, \$1000 OBO. 717/337-2006 lv msg

'96 F250, V8, 351, AT, 84,000 mi, Hunter green, \$8995. 717-445-7305

Used 19ft General, 15 ton deck over trailer, \$2750. 570-345-4882

1994 Dodge 2500 pickup, 318, automatic, air/am/fm, 114,000 mi, vy gd cond, new inspection. \$4200. After 6 pm 717-277-0395

Fisher snowplow, ex cond, \$1500 obo. 610-372-2479 Ask for Lyle

2001 Barrett alum stock trailer, 8Wx28Lx6'6"H, like new. 570-398-2688

88 Volvo TES 450 CUM 75K out frame major 10K/obo 717-786-3635

1987 Int. model 1700 flatbed, dsl engine, 5-spd w/ 2-spd axle, 22' alum. Eby flatbed w/full overhead over cab, custom built for hauling hay w/custom tarp, all exc. cond. Must see. 315/649-2697

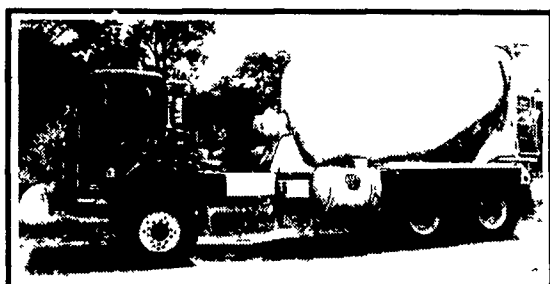
1995 Int. Paystar triaxle dump, brown, 400 big cam Cummins, 150,000 on rebuild, 80-100% rubber, new brakes front to back, new 3/8 floor, new tailgate, \$27,500. 717/244-8910

Storage Trailers. Sale, rent. 40' - \$950, 28' - \$750. Germak 717/944-2487

SAVE. STORAGE OR ROAD TRAILERS, 20' or 40' GROUND LEVEL CONTAINERS. PROMPT & COURTEOUS SERVICE. REASONABLE RATES. YOUR STORAGE SOLUTION, INC. 610/921-1955, 1/800-220-6082

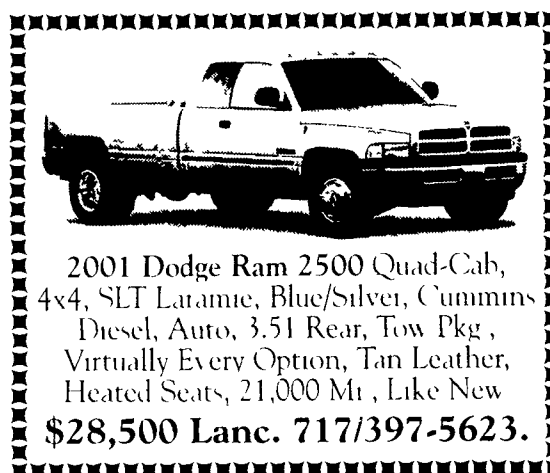
Buy a pre-owned car or truck for auction net + 7% (Manheim online). Eagles Nest Auto Buyers Agent, Duncannon, PA. Toll-free 877/801-2230

89 Ford F350 xlt, 4wd, dually, w/flat bed, 7.3 dsl, gd cond, \$7700 410-756-6992



'96 Peterbilt
6WD, 8-Spd. Trans., 10 Yd. Mixer
\$24,500 with or without mixer
717/336-7375

1990 Chevy 1 ton crew cab w/easy dumper, (2) 18' landscaping trailers, 1987 Chevy 1 ton dump w/snow plow & salt spreader, various landscaping & lawn maintenance equipment. Call for details 610-798-7823.



2001 Dodge Ram 2500 Quad-Cab, 4x4, SLT Laramie, Blue/Silver, Cummins Diesel, Auto, 3.51 Rear, Tow Pkg, Virtually Every Option, Tan Leather, Heated Seats, 21,000 Mi, Like New
\$28,500 Lanc. 717/397-5623.



1992 UD 1800
16' Dump 17,900 GVW
\$5,000 717-629-2844
New Holland

Used Truck Bodies

SPECIAL
1998
24' Kidrow
Aluminum
Body



Installed on NEW or Old Truck
Makes your Old Truck Look Like NEW!"

• Dry Van Bodies 10' to 28' • Reefer Bodies • Flat Bodies
(Completely Refurbished Bodies in Most Cases)
Same Day Service!

Phone 717-664-1696

CHARTER ENTERPRISES, LTD.
270 Hostetter Road, Manheim, Pa

6X6 WATER TANKER



Alum. 1,000 Gal. Water Tanker; AM General 6-Cyl. Turbo Diesel; 5-Spd. O/D; 9400 orig. mi. Hi/Lo Transfer Case; Mint Condition; 2-Way PTO Pump, **\$11,500 OBO**

CALL 814-834-1018

Year End Special
TrailBoss Trailer
10 Ton Dove Tail
(Heavy Duty)
Price: \$7,500



Call: Creek Hill Welding
PH# (610) 593-8188

TRUCK TIRES

- Used Truck Tires
- Authorized Cooper Tire Dealer
- Good Supply of Retreads In Stock, Or We Can Custom Retread Your Own Tires To Meet Your Hauling Needs.
- Eliminate the Middleman and Buy Direct from our Retread Shop and Save \$\$!
- Our Family Business Has Been Retreading Tires for Over 35 Years

We Know How To Do It Right!

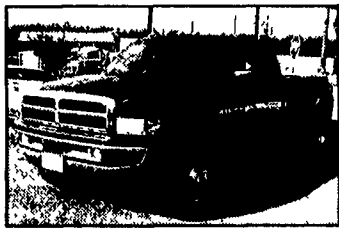


WEAVER'S TIRE SERVICE

Ephrata, PA

Drive On. **717/733-8775**

Diesel Owners!
Get HP & Fuel Mileage



We Have Performance Chips For The Following:

- | | |
|------------------|---|
| Dodge Cummins | 40-120 HP + 175 Ft. lbs. More Torque |
| Chevy Duramax | 70-210 more HP up to over 400 lbs. of Torque |
| Ford Powerstroke | 60 - 80 - 120 add more HP up to 200 lbs of Torque |
| VW TD | 35 more HP add up to 35 + 45 lbs. of Torque |

Free Installation

We carry complete line 4" exhaust systems for \$550
*Torque Converters *Valve Bodies *Exhaust Brakes *Gauges *K&N Air Filters

You Get More Horsepower & Torque

We Carry The Best Stuff For Your Truck
Propane For Diesel - Nitrus For Diesel

(717) 249-2255 *Call Now!!! Ask for Shawn*

LOVE'S AUTO SALES INC.

1970 Spring Road, Carlisle, PA 17013

Sales, Service & Inspection










SCREEN-N-STORE™



MP IN-CAB CONTROL

The MP pick-up mounted deicing spreader features the following:

- Patent-pending Screen-N-Store™ prevents over-sided material entering the hopper and doubles as an off-season storage stand
- Easy-to-remove spinner assembly to facilitate service and storage
- Fully welded and sealed hopper to resist corrosion
- Three MP packages available with Tecumseh, Briggs & Stratton, or Honda engines
- Unpainted 304 stainless steel option for added resistance to corrosion

For more information contact:

ANNVILLE EQUIPMENT CO.
470 Palmyra-Bellgrove Road, Annaville, PA 17003
717-867-4631 1-800-233-0520
E-mail: aeci@paonline.com Web Site: annvilleequipmentcompany.com
We provide parts & service for new leader spreaders.




Building the best since 1939.