

**BUYING & SELLING USED
CONSTRUCTION EQUIPMENT,
NEW & USED PARTS &
ATTACHMENTS
CALL**

**H.E.L.P., INC.
(717) 469-0039
FAX (717) 469-7679**

Specializing In Caterpillar Parts
also available for Case, Fiat, IHC,
Komatsu, Deere, Etc.

**ALL PARTS AT DISCOUNT PRICES!
PARTS LOCATING SERVICES**

Call Us For Your Parts & Service
Manual Needs

**HEAVY EQUIPMENT
LOADER PARTS, INC.**
10070 Allentown Blvd., Grantville, PA 17028

PA TRACK & WELDING

Bellefonte, PA

Reconditioned Undercarriage

- 1) set 941 B track groups new rails assembled w/90% 14" 3 bar pads \$2600.00 set.
- 1) set 943 track groups new hi-link SAIT rails assembled w/14" or 18" regrousered B bar pads \$3600 set
- CASE 850/855 Loader
Just turned P&B, Good used rails, 38 link, regrousered 15" 2 bar pads
 - 10) 50% bottom rollers
 - 2) Top rollers
 - 2) Idlers w/blocks

\$2000 - for all

- 1) set JD-440/1010/2010 tracks, 75% rails, new P&B, w/12" loader pads \$1000 set.
- 1) set HD-3/4 rails, 40%, good P&B, just turned, \$600 set
- 1) set FL-10C/E tracks, P&B, just turned, assembled w/15' regrousered pads \$1600 set
- 1) set regrousered 16" loader pads for Int 175/175B 9/16" bolt hole \$900 set

Call: 1-888-387-2510

(814) 383-2510

**Lancaster
Farming**

**Check
out
our
Website**

www.lancasterfarming.com

Diesel Engine Service

13 Pleasant Valley Road • Ephrata, PA 17522
PHONE: 717-733-3890 • FAX: 717-738-3146

JOHN DEERE & DETROIT DIESEL



• Engines • Power Units •
Generator Sets • Complete
Rebuilding • Parts &
Service • Rockford & Twin
Disc Clutches & Parts •
**New JD Powertech
Engines 20-500 HP**

- 80 HP 4045D JD Power Unit NEW \$7,750
- 115 HP 4045T JD Power Unit NEW \$9,682
- 75 HP 4219D JD Power Unit w/Hood \$6,000
- 80 HP 4239D JD Power Unit Good Used \$4,250
- 100 HP 453N Detroit Diesel Power Unit Used \$3,200
- 125 HP 471N Detroit Diesel Power Unit Used \$3,500
- 300 HP 8V71N Detroit Diesel Power Unit Rebuilt \$6,500



JERRE MARTIN REPAIR

391 N. Farmersville Rd., Ephrata, PA 17522

(Just minutes off RT 222)

717-859-3283

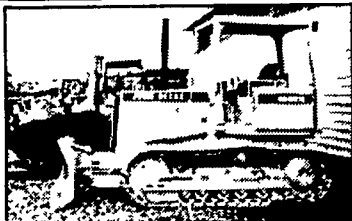
Toll Free 877-317-5348



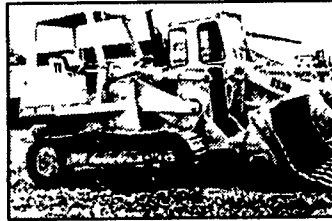
92 Cat 953 \$41,000



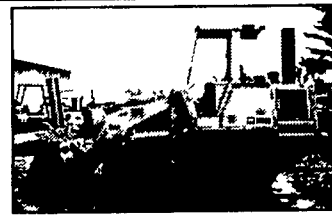
JD 570A, Excellent \$16,200



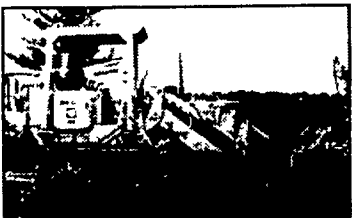
94 JD 450G \$24,500



93 JD 655B, LGP \$27,000



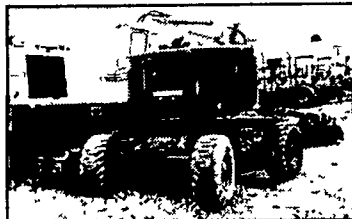
Cat 943 OROPS \$19,500



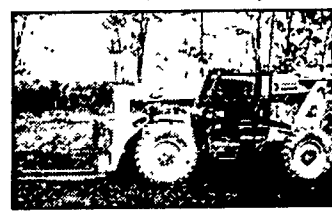
Cat 951C \$14,700



90 Cat D6H, Diff, Steer \$42,000



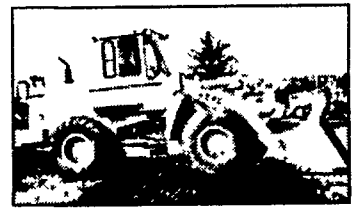
Condor 6G, 4x4, Manlift \$10,500



Gehl 663 6,000 Lb., 38 Ft \$22,000



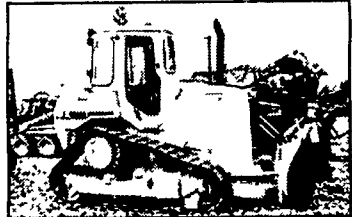
'99 Cat 226 \$15,000



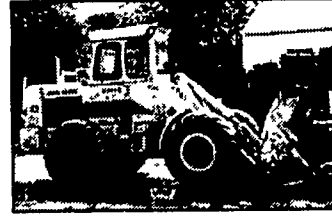
88 JD 624E \$33,000



Ditch Witch 6510, Diesel, Traveler
With Blade And Hoe \$4,500



87 D4H \$29,000



JD 644B Rebuilt Motor \$18,000



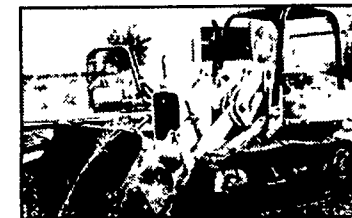
Skytrack 7038, 7,000 Lbs,
A38 Ft. \$21,000



Case 1840 Rebuilt Hydro's \$8,500



Cat 955L \$18,000



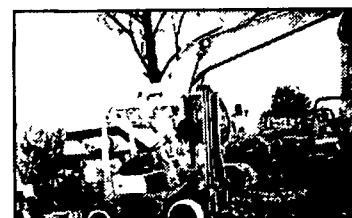
JD 450C Loader, New Tracks \$13,500



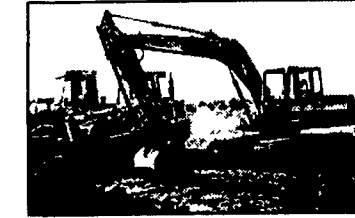
JD544B, Rebuilt Motor \$14,500



88 Cat 963 \$31,000



Late Model TCM 5,000 Lb. \$3,500



96 Komatsu PC150 \$32,000



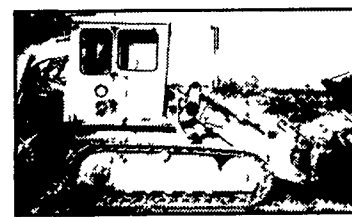
96 Cat 311 \$31,500



JD 2155 w/Finishing Mowers,
15 ft. Swath \$10,500



94 Komatsu PC 120 \$25,500



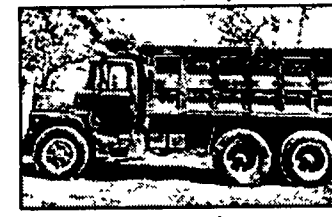
Cat 941 crawler loader, cab \$8,500



Case 1845B \$6,800



MF 383 farm tractor \$7,000



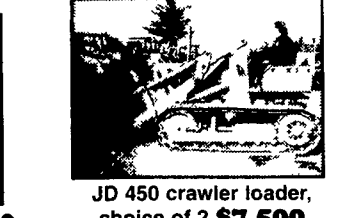
Mack DM 600 \$5,500



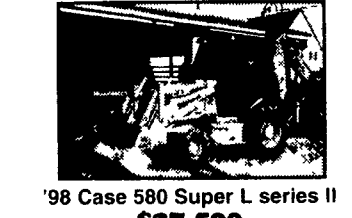
JD 544C New Torque Converter,
New Paint \$19,500



94 JCB 214, 4x4, extend-a-hoe \$20,000



JD 450 crawler loader,
choice of 2 \$7,500



'98 Case 580 Super L series II
\$27,500



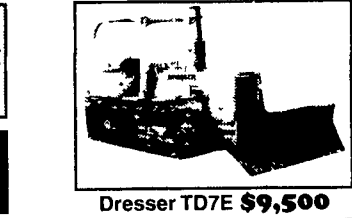
Case 584B forklift \$5,500



Case 855D crawler loader
new U/C \$16,000

**Road Service Available Now
Custom Repairs On All Makes Construction Equipment
Financing Available**

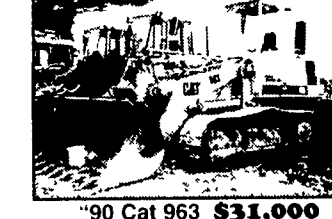
**WE ARE BUYERS FOR LATE MODEL CONSTRUCTION
EQUIPMENT NEEDING REPAIRS**



Dresser TD7E \$9,500



'96 Mustang 2040 \$7,500



'90 Cat 963 \$31,000