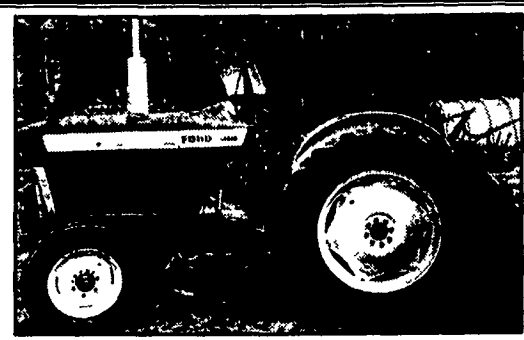




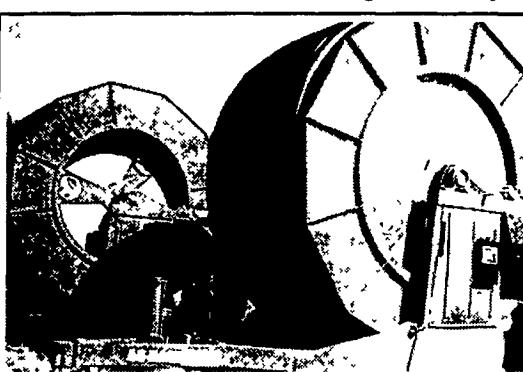
**JD 4420 Combine, 2000 hrs., w/chopper very nice, \$10,800 \$9,900**

JD 216 Flex Head, ..... \$3,000  
 Polaris Big Boss, 6x6, ..... \$3,900  
 JD 425 lawn mower, 54" deck, 600 hrs, very nice, ..... \$4,500  
 JD 4450, 15 speed power shift, 4200 hrs., 1-owner, very nice, ..... \$34,500  
 NH 258 hay rake, rubber teeth, ..... \$2,000  
 JD 213 flex head, ..... \$2,800  
 JD Snout for grain head, 200 & 900 series, ..... \$100/ea

**David Good, Myerstown, PA 717-933-9186**



**Ford 3000 diesel, 8 speed trans., 1 remote, new paint, runs good \$5,900 o.b.o. 717-532-6367**



**Ag-Rain T-40M/1320 Squatter Demo Unit \$24,500**

**COLEMAN IRRIGATION 856-358-4740**

**FARM EQUIPMENT**

Ford 8730, 4x4 w/cab & air, power shift. 570-265-9014

1998 Bobcat 863 skid loader, new tires, \$9500; 1996 Case 1840, 2800 hrs, \$8400; 1995 Case 1825 dsl, tooth bar, forks, \$5900; Bobcat 943 & 974 w/ grapple buckets, \$6500/ea. 717-859-3501

Thomas T173 skid steer w/Perkins dsl motor, 1800 lb lift capacity, good cond, \$5995. 570-265-9033

MF 20 industrial diesel w/3pt, PTO, PS, & loader w/reverser, \$4200. Kuhn 6301, 6 spinner hay feeder, hyd fold, \$3500. 717-534-1253



**2002 JCB 3185 Fastrac 5.9 Cummins, Autoshift, 4WD, All New Tires, Only 1500 Hrs., A/C 1-877-999-8267**

1086 CAH, 3 rem. 766 fender, rebuilt motor. 1066 cab. (2) 966 fender. 684, 2 rem. 570-966-3483

Free clean fill dirt. U-load, U-haul. 610-932-8999

JD 630, tricycle gear, very good condition, asking \$4500. 570-286-7952

1952 JD MC crawler tractor w/blade, good running order, garage kept, best over \$5000. 610-489-7801

Massey Harris pony w/ belly mower, 12V electric system, v.g. cond. \$2600 610-760-8511

JD 1020 gas w/chains, \$4500. 570/437-3983 after 5:30pm

JD 940 tractor, 24 spd, 710/70R-38 1670 h's \$99,500. CH 2344 combine, 350hrs, chopper, rock trap \$85,000, Ex cond. One owner, 765-737-6618

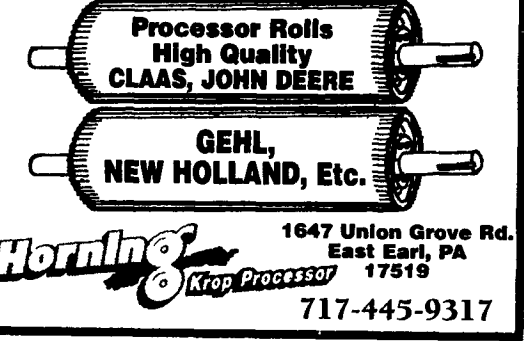
**Used Equipment**

Used Cub Cadet 7300, Gear Drive, 30 HP Diesel w/ loader, 195 Hrs. .... \$13,300  
 Belarus 800M, 2WD, 300 Hrs. .... \$12,500  
 Belarus 532 w/ Loader. .... \$14,500  
 Yanmar 2000, 603 Hrs ..... Call  
 Yanmar 1510 w/Loader ..... \$5,800  
 Kverneland 7335 Bale Wrapper (New)  
 Bush Hog Razorback 60" Rotary Cutter .... \$650  
 Dynavent Bedding Chopper ..... \$900  
 AgriMetal 3 Pt. Bedding Chopper  
 Automatic Roller Mill w/motors  
 Bush Hog 60-07 Scraper Blade (Like New)  
 Rissler #60 Feed Mixer  
 Rissler 450 TMR Mixer  
 Vandale 4600 Tank Spreader, Steerable axle(Rental)  
 (2) Vandale 3400 Tank Spreader (1 - New, 1 - Demo)  
 Houle 12 Ft., 3 Pt. Pit Pump ..... Coming In  
 Dry Hill 32 ft. Lagoon Pump (Rental)  
 Dry Hill 8 to 12 ft. Adjustable Pump  
 Dry Hill 12 ft. 2 pt. Pit Pump  
 Dry Hill 3 pt. Pit Pump (like new)  
 Vandale/Bodco 32 Ft Lagoon Pump  
 8 1/2 ft. Snow Plow ..... \$1,500  
 Woods 7Ft. Brush Cutter  
 JD 5 Ft. Brush Cutter

**CALL TODAY FOR GREAT PRICES**

Sales & Service  
**ROVENDALE AG & BARN EQUIP.**  
 WATSONTOWN, PA 17777  
 570-538-9564 OR 570-742-4226  
 I-80 to I-180 Watsonstown Exit

**Forage Processor Kits**



1647 Union Grove Rd. East Earl, PA 17519  
**717-445-9317**

**INJECTORS**

**Have you serviced yours?**

**Bad Injectors Cause:**

- Excessive Fuel Consumption
- Poor Starting
- Loss Of Power
- Misfiring
- Black Smoke
- Overheating

**So service them regularly!**  
 As always, injectors are checked free of charge

**PENN DIESEL SERVICE CO.**  
 Diesel Technology Center  
 Factory Authorized  
 Fuel Systems & Turbochargers Specialists  
 Parts & Equipment Distributors

Exit 77 Interstate 81  
 337 N. Fairville Ave.  
 Harrisburg, PA 17112  
 Web: www.pennsdiesel.com  
 E-mail: pennsdiesel@hotmail.com

800-535-2913  
 717-545-4207  
 Fax: 717-545-0115

**BEARINGS**

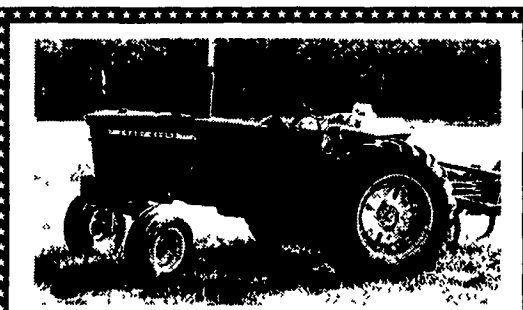
**BELTS**  
**BUSHINGS**  
**CHAIN**  
**SPROCKETS**  
**SEALS**  
**COUPLINGS**

**FOR IMPOSSIBLE TO FIND BEARINGS**  
 WE BUY EXCESS INVENTORY  
 CALL NATIONWIDE BEARING SERVICE

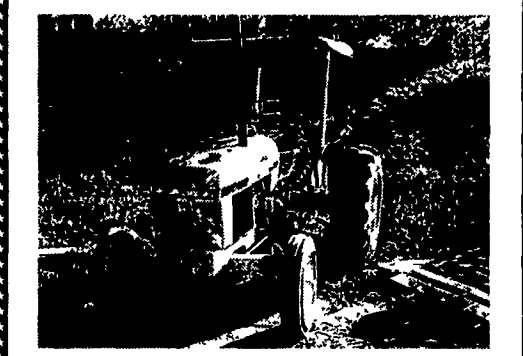
**Aftermarket Mower and Tractor Parts**  
 Agricultural & Industrial  
 One or 10,000 Pcs.  
 Call us with your needs and get overnight delivery

**ALL at WHOLESALE PRICES!**  
 Call toll free  
**1-800-342-2082**  
 Fax 973-344-0403  
 22 Union St., Newark, N.J. 07105

**National Bearing Service**  
 We Accept Money Order or Check



**JD 4020 Side Console, 6,880 Hours, Syncro Trans., Dual Outlets Excellent Tractor \$11,500**



**JD 2150 Tractor, 5,350 Hours, 3 Point Hitch, Good Tractor \$5,850**

**WITTE'S TRUCK & TRACTOR**  
 6417 Davis Road, Mt. Airy, Md.  
**301/829-0271**

PTO Belt Pulley, JD (can be used to adapt others) Bolt Pattern 6 3/8 x 5 3/8, 8" face, 12" diameter fine spline \$350 419-468-5342.

SAWMILL \$3,895. Free information. Norwood Industries, 252 Sonwil Dr, Buffalo, NY, 14225. 1-800-661-7746, ext 407.

Cummins 6BT power unit, 140hp w/3 large hyd. pumps, low hrs, best offer; JD 450C w/9300 backhoe, poor UC, \$6900. 717-445-6156

Gehl 4500 skid loader, \$2500. Rissler 135 TMR mixer, \$2000. 814-793-4262

JD 4430 tractor, cab, AC, QR, duals, good cond., \$15,000. 717-664-7409

(2) Trailer loads of grain heads just arrived, plus large selection MF, JD, IH, Gleaner corn heads. Prices gladly quoted over phone. Zeisloft Eq. 800-919-3322

IH 1486 back from rental, price reduced from \$12,500 to \$10,800, good runner. Also 986 \$8900, 1086 \$13,500 new TA clutch, fancy 886 late model. 66 series also in stock. Call Zeisloft Eq. 800-919-3322

7000 JD planters, 4-6 row, from midwest, new or used units. Frame coulters, dry or liquid fertilizer, openers, markers, hitches, tires, soybean meters, monitors, sensors, Gandy applicators, parts. Demco squeeze pumps. 1-2-3 row sweet corn, pumpkins, vegetable planters. Custom built planters. Pequea Planter, 717-442-4406.

Wooden feeder bunk wagon, \$475; 7x16 hay wagon, \$675; McCormick 10' lime spreader, \$475; 6' 3pt double auger snow blower, \$1275. 610-916-3959

2pt N-tech manure pump w/new paint & new fill pipe, \$1,200. HD 8 post pounder, skid lr mounted, good cond, \$950. Remington 760 30-06 rifle w/scope \$400. 717-530-1656.

Buy & Sell IH & Farmall. Used parts, rebuilt clutches & T/A's. Fuel pumps, turbos. Leaman Tractor Parts. 717-464-2874

IH #14 sub-soiler, 5 shank w/auto reset, \$4500. Amco 20ft disc, 20" blades, \$5500. Brillion 21ft X-fold packer, \$4500. Kruase 5200 no-fill drill, 15ft, \$12,900. 610-593-2915

**NEW/USED/RENTAL LIQUID MANURE EQUIPMENT**

**Spreaders**

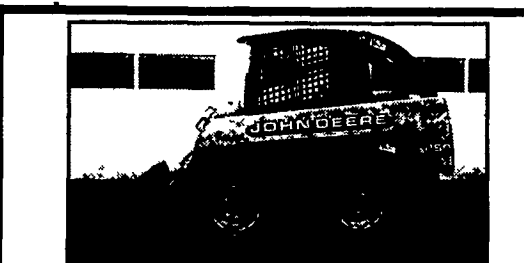
Houle 6300 Gal. Spreader, 28Lx26 Tires, Steering, Brakes, (2002 RENTAL) ..... Call  
 Houle 5250 Spreader w/Disc Incorporators 28Lx26 Tires, Steering & Brakes (2002 RENTAL) .. \$22,300  
 Houle 5250 Gal. Spreader 28Lx 26 Tires, Steering, Brakes, Lights. (NEW) ..... Call  
 Houle 4300 Gal. Spreader 28Lx26 Tires, Brakes, Lights (2002 RENTAL) ..... \$16,100  
 Houle 3600 Gal. Spreader 23.1x26 Tires, Brakes, Lights (2002) Rental) ..... \$14,100  
 Calumet 1500 Vacuum Tank, (NEW) .... Call



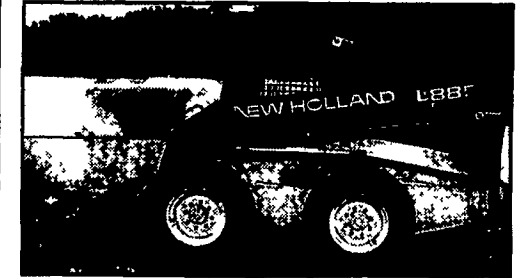
**Pumps**

Houle 32 ft. Lagoon Pump, (USED) ..... \$1,300  
 Houle 32 ft. Multi Purpose Lagoon Pump, HD Drive Line, 16" Fill, (New) ..... Call  
 Houle 28" Maxi-Pump on Trailer (NEW) .... Call

**HOULE** **Calumet**  
 "We're Here To Serve You"  
**SNOOK'S EQUIPMENT**  
 RD3, Box 130, Mifflinburg, PA 17844  
**570-966-2736**  
 Ask For Ernest or Dean



**2000 JD 250, 680 hrs., \$13,900**



**97 NH LX885, 3200 Hrs. \$10,750**

93 Mustang 940, 3400 Hrs. .... \$6,500  
 93 NH 785, 3800 Hrs. .... \$8,900  
 94 NH 783, Bucket & Forks, 2400 Hrs. .... \$9,500  
 96 Case 1840, 1500 Hrs. .... \$9,000  
 New Pallet Forks ..... \$495  
 72" Root Grapples ..... \$2,200

**Weaco Equipment**  
 Reinholds, PA 717/336-7375