

## Public Auction Register

Closing Date Monday 5:00 P.M.  
of each week's publication

Internet Sale Register will be updated  
by Friday at 12 Noon

ATTENTION AUCTIONEERS

All sales register info needs complete address,  
street, town, county & state.

### NOVEMBER

FRI NOV 29 & SAT NOV 30  
Truck repair equip, trucks, guns,  
farm equip, at Hauseman's Auc-  
tion Barn, Hill Church Rd  
Pikeville, PA watch for auction  
signs on Rt 73 at Pleasantville  
between Oley & Boyertown By  
Hauseman Auct AU3086L, 610-  
987-6446, 610-987-6826

SAT NOV 30 - 8:30AM 5th Annual  
Kingspala Farm & Construction  
Consignment Auct Wolgemuth  
Auction #2357

SAT NOV 30 - 9AM Real Estate,

5.6 acres, 2-stry dwell, office or  
shop, shed, antiques, HH goods,  
guns, tools, 101 S Jackson St,  
Strasburg Boro, PA, by Miller &  
Siegrist Auct 717-687-6857,  
AU1723L

SAT NOV 30 - 9AM Real Estate  
Auction - 543 Miller Rd, Peach  
Bottom Twp, Delta, York Co  
Sechnst Auctioneers, AU-000820,  
244-0295 or 741-4489

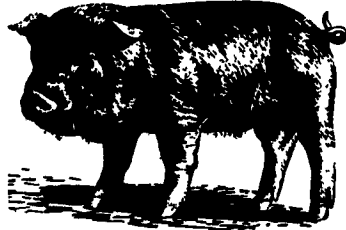
SAT NOV 30 - 9AM On site sale  
Ganterts Automotive Garage, 131  
Thorn St, Reading, PA, by  
Samuel & Philip Ferraro, AU276-  
L, 610-856-5000

SAT NOV 30 - 9AM Antiques,  
household goods, collectibles and  
tools 158 W Fulton St, Ephrata,  
Lanc Co, PA

SAT NOV 30 - 9:30 AM Auction  
Diamond Reo trucks assets &  
truck manufacturing & parts plant  
in Harrisburg, PA turnpike, I-76,  
exit at 19 Go on Rt I-283 N from  
tollbooth Follow I-283, 2.4 mi to  
Rt 322 E Follow 322 E for 2.9 mi,  
sale site on R Product line, shop  
tools & machines, forklift,

new/used truck parts, office equip  
misc by Wolfe Auct, AY-000206-  
L, insp Friday 11/22, 10 to 4  
wolfeauctions@msn.com

SAT NOV 30 - 10AM Real  
Estate, 1210 Girl Scout Road,  
Steven (near Mt Ary), Pa, From  
Route 272 at Ephrata, take  
Schoeneck Road to Schoeneck, L  
onto Mt Ary Rd, R onto Girl Scout  
Road to property on R, Aaron E  
Martin Auction Service, AU-  
002280-L, 717-733-3511



## PUBLIC AUCTION

OF VALUABLE REAL ESTATE  
SAT., DEC. 7, 2002  
Sale at 2:00 P.M.

Located at 7 Westview Dr., Leacock Twp., Lanc.  
Co., PA. One mile east of Intercourse, turn off Rt.  
340 (Old Phila. Pk.) north on Westview Dr.



LOT 100' X 170' M/L

Brick & Frame Ranch type dwelling w/one car  
garage attached, elect. door opener & storage  
above. Eat-in kitchen w/built-in oak cabinets,  
built-in elect. stove & microwave, ceiling fan,  
sun room, wooden deck, full bath, 3 bedrooms,  
w/closets, hallway w/closet & linen closet, wall  
to wall carpet throughout. Full finished basement  
w/family room w/closet, bedroom w/closet, laun-  
dry w/closet, office, full bath w/linen closet, stor-  
age room, elect. heat, central air, elect. water  
heater, well w/pressure system, public sewer.  
12'x12' storage shed.

10% down day of sale, balance on or before April  
30, 2003. For inspection appointment call  
768-0600.

Auctioneer's Note: Property in excellent condi-  
tion, ready to move in w/country setting.

Terms by:  
Cody & Stephanie Hall

Aucts.  
Robert E., Jeffrey R. & Michael L. Martin, 717-656-7770  
AU000580L Randall L. Ranck  
Kenneth Covellans, Atty.

## WOLGEMUTH AUCTION

LUMBER & BUILDING  
MATERIAL SALE  
LOCATION

109 N. Maple Ave., Leola, PA 17540

WED., DEC. 4, 2002

9:00 AM

400 Windows - vinyl, bow box windows, bow  
windows, Peachtree windows, bay windows,  
bow & garden windows, sky lights, 200 Doors:  
Interior & exterior pre-hung patio doors, bi-folds-  
dbl doors; sliders, French doors, doors w/side  
lights, leaded glass doors; Tractor trailer load of  
vinyl siding; Roof shingles, tar paper, all kinds  
of trim & molding, drywall; Hardware, nails,  
screws, other misc. hardware, 300 Kitchen  
Cabinets, medicine cabinets, broom closets,  
cultured vanity tops & counter tops, vanities;  
door latches, door locks, wash bowls, different  
sizes of trusses; Paneling, 2 trailer load of pine  
boards; hardwoods, skids of caulking &  
adhesives, Lumber - 1/2", 5/8", & 3/4" ply-  
wood; Flake board, 3/4" OSB board, T-111,  
treated lumber, fiberglass tub & shower (some  
handi-cap) units; Whirlpools, sinks, ceiling tile,  
insulation (4'x8' sheets), metal roofing, steps,  
flashing, soffit, ceramic tile, carpet & vinyl  
flooring. Hardwood flooring, laminated floor-  
ing, 18", 12", 8" I beams, kiln dry wood, 10'-20'  
spouting, coil, veneer stone 1,000-1,200 sq. ft.

AUCTIONEER NOTE: Selling with 7 auction-  
eers simultaneously, bring a friend!  
TERMS: Cash or PA check with I.D.

List subject to change.

WOLGEMUTH AUCTION (#2357)

Call Dennis (717) 656-2947 FAX (717) 656-6011

http://www.wolgemuth-auction.com

EMAIL: wolgemuth-auct@juno.com

Next Lumber & Building Supply Sale:

Wednesday February 5, 2003

## Public Auction

Thurs., January 2, 2003

9:00 A.M.

Heflingers, Ponies, Driving Horses  
Farm Machinery, Milking Equip., Tools

Location: 400 Newport Rd. Ronks, PA; Along Rt 772, 2 1/2 miles south of  
Rt. 23, between Mascot & Montrey, Lanc. County

4- Heflingers (reg.)  
6- Standard bred horses  
6- Ponies

I.H. 1066 tractor on steel hydro diesel

Farm Mach.: N.H. 273 baler w/liquid sprayer, JD 999 corn planter 2-row,  
N.H.256 hay rake, N.H. 456 Mower, N.I. 323 corn picker, N.H. 404 crimper,  
Zimmerman 36' elevator, MC corn binder like new hydr w/Alum. loader,  
E.L.S. manure spreader, Ontario grain drill, 3- farm built 16' wagons, 9' har-  
row, round hay rack, 20' long hay rack, Oliver 1 & 2 bottom plow, Fisher field  
sprayer, 8' roller, 4-fore carts, bin wagon, MC 1-row cultivator, 2- 9' culti-  
packer, Peq. hay tedder, 2 point hitch for round bales, Hyd. unit w/Honda  
eng. Hyd. hoses, 8 pen calf hutch, 6' fan w/Honda eng., portable Lincoln  
Welder, 3,000 tobacco lath, 3- bale boxes, tobacco shears & spears, Lazy  
Susan tobacco holder, pony cart, saddle, 1-2-4-6 hitches, harness, collars,  
pads, Bedding chopper, foot bath, tool chest, forks, shovels, tools, sm. ani-  
mal traps, scrapper for tractor, battery clipper, moisture tester for hay & corn  
Milking Equip.: 4- Delaval DV-300 milkers, sputnik, 55 lb. - 70 lb. spare  
buckets, Gist - Brocades Milk tester, iron kettle plus many more items.

Terms: Cash or good PA check; out of state buyers need current bank  
letter of credit.

Auctioneer Note: Sale order sm. items, farm mach., milking equip,  
horses & ponies

SNYDER'S AUCTION SERVICE

Auction for:  
Ernie & Fannie  
Stoltzfus

Refreshments

Paul  
(717) 733-7052



Michael  
(717) 291-5749

AU-003489-L

## PUBLIC AUCTION

Discontinuing operations, I the undersigned will sell at Public Auction.  
Located 3 miles east of New Castle, Pa on State Route 108 to Auction (Just  
west of State Route 388 & State Route 108) on

SATURDAY, DECEMBER 14, 2002

@ 11:00 A.M.

48 ACRES\*\*HICKORY SPEEDWAY\*\*48 ACRES  
LAWRENCE COUNTY\*\*HICKORY TOWNSHIP  
LAUREL SCHOOL DISTRICT

Show Date November 27, 2002 2-5 P.M.

Consisting of 48 acres of land approximately 50% wooded with 1080 ft road  
frontage on State Route 108 and 1016 ft frontage on Cameron Rd. 1/4 acre  
pond on property. Improved by a 15 x 32 2 story frame building. Concession  
stand on first floor, 2 room carpeted office with 3/4 bath on second floor. 16  
x 20 concrete block restroom building. 4 plus acres of graveled parking lot.  
1/4 mile semi bank dirt track.

Race Track equipment: 2 sections steel grand stand 45x114 ft each (seats  
approx 900 each); approximately 32 outdoor stadium flood lights for race  
track; 5 caution lights; approximately 3/4 mile of guard rail.

REAL ESTATE & TRACK EQUIPMENT SELL FIRST!!

Note: Real estate and race track equipment will be offered separately and as  
a unit and will sell the method producing the highest bid.

Terms on Real Estate: 15% of purchase price down day of sale, balance due  
upon delivery of deed and title guarantee. This property sells to the highest  
bidder without reservation. If the above show date is not suitable, contact  
auctioneer for alternate viewing. 330-227-3236.

### MACHINERY & TRUCKS

Case 580-B loader/backhoe serial #5237165 w/extend-a-hoe, 4800 hours  
(100 hours on rebuilt engine); Allis Chalmers road grader w/hydraulic blade  
model 131; Massey Ferguson 50 tractor w/3 point hitch, live PTO, good rub-  
ber; 1979 Deutz model DX-160 diesel tractor serial #7624, 0335 w/4  
remotes; Case Comfort King model 730, good rubber, 3 point, 4 remotes,  
remote hydraulics, serial #8259858, 4000 hours; 12 ft transport disk  
w/hydraulic cylinder; GMC tandem axle off road truck w/Cummings diesel  
engine, 4000 gallon SS water tank (Honda water pump) (no title); White  
Road Commander 2 cab over tandem axle off road truck w/Cummings diesel  
engine; 4200 gallon water tank (Honda water pump), (no title); 4 inch Honda  
water pump w/gas engine; 3 inch Honda water pump w/gas engine; yard  
Master 167 hp garden tractor; 8 scrap cars and trucks; Caterpillar #12 grad-  
er, for parts serial #BT20499 or 8T20499; Caterpillar 8T6857 grader for  
parts, no motor; 2-5 ft 3 pt back blade; 6 ft 3 pt land level; Woods 6 ft 3 pt  
rotary mower; White push mower; 4x8 1000 lb scale w/digital read out; golf  
cart; Soundcraftsman pre-amplifier model SP-4000; Soundcraftsman class  
H stereo power amplifier model PA-5001-A; Soundcraftsman equalizer; 1 lot  
misc hand garden tools; 1 lot misc.;

CONCESSION RESTAURANT EQUIPMENT: Beverage Air 2 door  
reach in cooler; Hobart 3 blind door freezer; popcorn machine; refrigerators;  
2 bowl SS sink; Imperial 2 basket gas deep fryer; SS work tables; 90 cup cof-  
fee makers; electric roasters; 1 lot misc restaurant and concession equipment;  
misc paper goods;

Terms on Chattels: Cash or Check

PENNSYLVANIA RACEWAYS INC., OWNER

KEN & BILL BAER AUCTIONEERS

AU-003018-R AU-003020-R

MARK HARDING AUCTIONEER AU-003021-R

330-227-3236

DOÑ BRAHAM AUCTIONEER AU-2274-L

814-784-7867



## MACHINE SHOP AUCTION

GAITHERSBURG, MD.  
SAT., DECEMBER 14

9:00 AM

Due to the death of her father the undersigned  
will offer the following located at 20109  
Woodfield Rd.

Directions: From the intersection of Rt. 27 and  
Rt. 108 in Damascus take Rt 124 south/  
Woodfield Rd., 7.7 mi to sale on left.

4 lathes all with 3 & 4 jaws, face plates & tool-  
ing; 10" X 36" Clausing, 13" x 36" South Bend,  
14" x 48" Reed, 14" x 48" Bradford. Cincinnati  
vertical mill, 42" table w/power feed; & tooling.  
B & S vertical horizontal mill w/Bridgeport head,  
Rusnok vertical horizontal mill w/30" table, 8"  
cap. horizontal band saw, 5 HP air compressor,  
Champion 20" floor model drill press, Delta floor  
model drill press, Delta bench model drill press  
w/XY table. Acetylene cutting torch set w/tanks,  
J.A. Fay 14" heavy duty table saw. 18" rotary  
table, 2-6" swivel base vises, tool post grinder,  
quick change tool post w/12 holders, boring  
heads. Old generator & motors, 3-2 wheel trail-  
ers, 2 Wards riding tractors, Sears 12 HP riding  
tractor, 20 HP Huskee riding tractor w/50" cut,  
wheel barrow, cement mixer, hand & garden  
tools, lots of nice dry pine, oak, walnut & cherry  
lumber. Lot of end mills, cutters and other  
machine shop items.

Auctioneers note: Will be selling contents of  
several buildings with lots of misc. lumber. Items  
may be removed day of sale or by appointment.

Terms: No buyers premium, cash, company or  
personal check w/proper ID. Md. sales tax col-  
lected.

P.O.A. Pam Biros

Auctioneer: Jim Beaver, 410-857-9558