

Virginia Hosts World Percheron Congress

(Continued from Page A40)

was "ornery," horses have been a central part of her life from the early years.

A firm conviction the young woman holds is that two Percherons are definitely better than one. That's why last summers arrival of a new foal was so exciting for the young woman who has a barn under construction.

Stutzman has attended the Ohio State University, Agricultural Technical Institute, and Kent State University. She says that improving her team driving skills is continual work.

During the six and eight-horse hitch classes, spectators learned from the courteous announcer that each team in the lineup has a function.

"Remember, I told you the biggest and baddest is next to the driver," he said, at one point. These Percherons are the wheel team located next to the driver. They don't get much action.

Rock solid and seeing more action is the swing team in the middle. Up front, the leaders see the most action, but are smaller than the latter teams.

"The showiest horses are up front," said the announcer.

"You can't imagine the adrenaline rush of these drivers," he said. "Only a handful of drivers in the world can do what these drivers do," he added as the drivers had to skillfully execute a reverse pattern with the teams. It was done with elegant grace and style to an appreciative uproar of tribute.

Tom Berry, Kansas City, Mo. was the congress chairman, and Albert Cleve, Farmington, Mo., show superintendent. Bill Grimm, Gowanda, N.Y. was farm show manager and Sally Moore, Ferrum, Va., crossbred show manager. Dave Schubert,

Brainerd, Minn., managed the horse sale and was the auctioneer.

Crae Eller, Arcadia, Ind., was the halter judge and Steve Gregg, Cargill, Ontario, Canada, the hitch judge. The riding judge was Ellen Fischer, Claysville, Pa. and Steve Ade, Salina, Kan., the farm class judge. A. Parker Shinn, Bunker Hill, N.J., was farm pull judge.

Announcers were Dave Schu-

bert, Brainerd, Minn.; Jennifer Cleve Blum, Farmington, Mo.; and Dick Liedorff, Brookfield, Mo.; Jesse Darlington, Centre Hall, Pa., was the ringman and Frank Twitty, Kansas City, Mo., the assistant ringman. Brian Richmond, Staffa, Ontario, Canada, managed photography.

BRIGGS AUCTION, INC. SINCE 1932

AUCTION DETAILS

DATE
Monday, December 9, 2002

LOCATION
Briggs Auction Showroom
Rt. 491 at 261, Booths Corner/
Boothwyn, PA 19061

START TIME
5:30pm

PREVIEW
Sunday, December 8th, 7-9pm
Monday, December 9th, 2pm on

TERMS
Cash/Approved Check/Visa/MC
10% Buyer's Premium

FOR MORE INFORMATION
610-566-3138 (Office)
610-485-0412 (Showroom)

W.J. Briggs/J.H. Turner,
Auctioneers • AU-00098-L

Visit
www.briggsauction.com
For More Details, Photographs,
and Driving Directions

ESTATE ANTIQUE AUCTION MONDAY, DECEMBER 9th, 5:30PM

We are proud to offer without minimum or reserves, articles from the following Delaware Valley Estates and Collections:
the Estate of Robert "Bo" Brown, Noted Cartoonist
the Estate of Edith S. Taylor, Gladwyne, PA
the Estate of Taylor Young, Poughkeepsie, NY
a Wilmington, DE Collection

HIGHLIGHTS INCLUDE:

ANTIQUÉ FURNITURE: PA Wal Chippendale tall chest on Ogee bracket feet • Fed Mah desk w/bksc top, French flared feet • Dimin Hepplewhite bow-front sideboard • Georgian Mah bachelor chest w/ fitted interior • Vict Wal chest w/drop-front desk & Bird's-eye Maple int • Empire Mah desk w/bksc top • Pine dry sink w/cupbd top • Empire Mah center table w/claw ft • 2 Vict Eastlake Wal bookcases w/glass doors & gallery tops • Vict Wal lock-side chest • Vict Wal drop-leaf game table • Fed 1- and 2-dr stands • Mah French carved parlor furn • Vict Wal high-back bed • Vict Wal & Mah bureaus • Vict marble-top center tables & stands • Empire Mah marble-top cellarette • Ornatly-carved full-size bed w/acanthus-leaf, floral & drape motif, and more

FINE REPRODUCTION FURNITURE: 7 Oak barrister stack bookcases by "Globe" • 2 Mah round, ped-base dining room tables w/ claw ft • 2 sets of Mah Chippendale-style DR chairs w/B&C ft • Set of 6 Oak Chippendale-style DR chairs w/B&C ft • Mah bench-made drop-front desk w/claw ft • Inlaid Mah Fed-style curio cabinet • Mah Mission-style bookcase w/glass doors • Mah Empire-style sideboard w/claw ft, and more

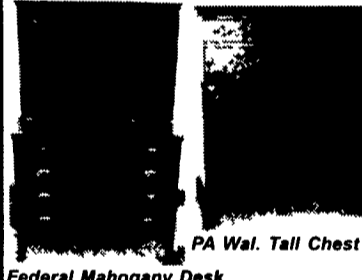
CLOCKS / ACCESSORIES / COLLECTIBLES / ORIENTAL CARPETS

Clocks Oak Tall-case clock • Ansonia Crystal-reg mantle clock • Tiffany French-style carriage clock, & others • Ass't mantle & shelf clocks, incl Ansonia, Waterbury etc • French clock w/pink Marble case & urns, etc
Accessories Slag-glass table lamp • Hand-painted GWTW-st oil lamps, & others • Lithopane candle screen • Edison Std tabletop phonograph w/ morning glory horn & cylinders • Mah -case uprghnt Victrola • Leather-bound books • Enterprise coffee mill, #2 • 2 ant Brass microscopes • Lead soldiers, etc *Ephemera* Early indenture • Confed paper money • Letters from Helen Keller (1924), Sec'y of Treas'y, C Glass (1919), William Oliver Stevens, etc *Military & Weaponry* PA long Rifle, C 1800 • Winchester Rifles • Muzzle-loaded Rifle, "Moore", NY • Antique pistol • Ivory-carved Samurai sword • Plumed military dress hat • *Oriental Carpets* Room-size Heriz • Ass't area-size Caucasian & Turkish carpets

ARTWORK: *Oil Paintings* Giacomo Mantegazza • Henry Stuart • P Levin, 1885 • G Perillo • Chas C Curran, 1884 • Wm Chadwick • Rbt Phillip • E Caler • Berecisi • Volinger • W J Boogaard • Jammes • Set-6 Oriental genre scns. on silk • *Watercolors* P-J Clays • H B Tschuly • Dines Carlson • Ron Dembosky • *Prints* Numbered print by G. Broque • Color litho. Amherst College • Hundreds of ong drawings & illustrations by Robert "Bo" Brown.

SILVER / CHINA / ART GLASS / POTTERY: *Tiffany Sterling* Ormate tongs • Art Nouveau svc pcs • Baskets • Ladles • Set of nut picks • Spoons, etc • *Sterling Silver* Ford & Tupper Teapot on stand w/burner • 125 pcs Reed & Barton flatware, *Fr Ren* • 12 souvenir spoons • Var Sterling svc pcs, by Theo B Starr, S Kirk & Son, Ball Black & Co, Wm Gate & Son • Sterl candlesticks, picture frame, shoe horn, etc • Sheffield tea sets • Ass't Silver plate, etc *China, Pottery, Art glass* Signed Gallé cameo-glass vase • Signed Tiffany favrille vases & pedestal-base bowl • Cloisonné vase • English transfer porcelain • Dresden • Gaudy Dutch • Redware • Staffordshire • Majolica • English 5-pc pitcher & bowl set • Vienna porcelain vase, and more

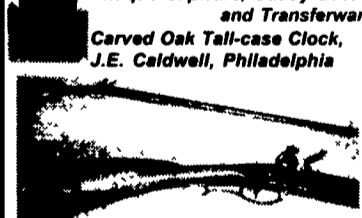
FINE JEWELRY: Gold pendant w/Diamonds • Opal pin w/Diamonds • Diamond 'X'-motif Ring • Pr Diamond earrings • Enameled 18k Gold "Violin" pin w/ Diamonds • Gold & Diamond "Honeybee" pin • 14K Man's Le Coultre wrist watch with diamonds • Ladies Gold wrist watches w/ Diamonds • Gold bangle bracelets with Diamonds, Pearls and Opals • Pocket watches and watch fobs • Stick pins • Victorian silver and gold jewelry • Collection of 8 gold cigarette and card cases, etc



PA Wal. Tall Chest



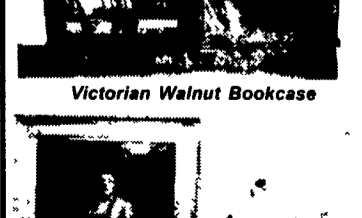
Federal Mahogany Desk



Antique Slipware, Gaudy Dutch, and Transferware



PA Long Rifle in Tiger Maple, C.1880, with engraved Brass Patchbox



Victorian Walnut Bookcase



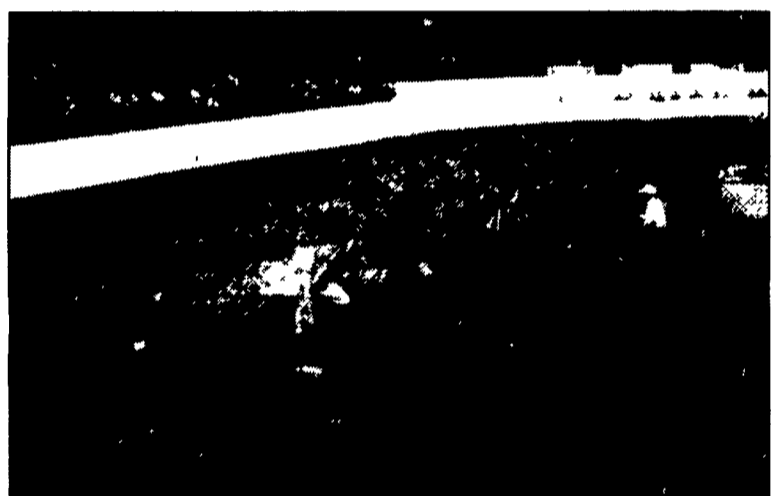
O/C by P Levin, 1885, 56 5" x 44.5"



Diamond Pendant Tiffany Art Glass Gallé Vase Ford & Tupper



Pictured is the Team Log Skid world champion, exhibited by John Adametz Highland, Wis. It was Class F-4, sponsored by the Virginia Percheron Association. Pictured during the plaque presentation are the driver and judge.



After walking, cantering, and reversing direction in Class 69, "Cart, man driver, registered mare," exhibitors are lined up awaiting the judge's pronouncement of the champion.

ATTENTION AUCTIONEERS
 Due to the Christmas Holidays
 Deadline for the Dec. 28th issue will be
FRIDAY DEC. 21 5PM
 Deadline for the Jan. 4th issue will be
FRIDAY DEC. 29 5PM
Happy Holidays!

THE SHOPPES AT SYLMAR FLEA MARKET
 NEW VENDORS WELCOMED, SPACES AVAILABLE
 We, The Shoppe Owners, would like to invite you to visit us, so we can help you select that special holiday gift.
 Our selection of perfect gifts include
 Fine Antiques, Collectibles, Arts & Crafts, Memorabilia, Antique Pedal Tractors, New Guitars & Accessories, Radios of Yesterday and Today, Records, CD's & Videos, Nascar Cars & Sports Apparel, Avon Holiday Shop, Electronics & Video Game Systems, Disney & Looney Toon, Gourmet Nuts and Dried Fruits, Sewing Machines, Jewelry, Ladies Clothing & Handbags, Tools & Hardware, Watches, Slot Machines for Entertainment & Vintage Surprises Galore!
 On Route 1 in Rising Sun, Md just south of the Pa. line Only minutes from I 95 Rt 272 & Rt 40
HOURS: FRIDAY 12-8 / SATURDAY 7-4 / SUNDAY 11-6
 RESTAURANT ON SITE **PHONE: 410-658-9050** HEAT & CLEAN RESTROOMS