

35

TRUCKS AND TRAILERS

7511 Allentown Blvd.
Harrisburg, PA 17112

AFFORDABLE CARS AND TRUCKS, INC.

717-652-1925
FAX 717-652-4888
www.autotrader.com/view/affordable car and truck

75 TRUCKS IN STOCK

"You Gotta Believe!!"

New Exit #72A, Rt. 81 N; Rt. 22 East of Harrisburg; 3 Miles North of Hershey Park

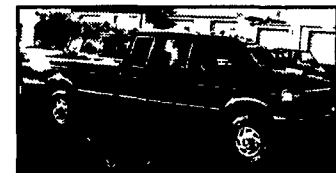
92 FORD F250 XLT 4x4

Ext, Longbed, 7.3 International DSL, AT, AC, PW, PDL, Stereo, New Radials + Flawless Looking + Driving Truck, 150K
Sale \$9,500



94 FORD F250 XLT

4x4 Ext Cab Long Bed, 7.3 International Turbo Dsl., AT, PS, PB, AC, Tilt, Cruise, Tow Setup & More, 99,000 Mi., Very Well Cared for Truck!
\$12,995



95 FORD F250 XLT 4x4
Ext Longbed, Powerstroke, DSL, 5 Spd, AC, PW, PDL, Tilt, Cruise & More, New Clutch & Flywheel, Like New, Black Body, Must See & Drive, 100,000 Mi.,
\$13,500



96 JEEP GRAND CHEROKEE 4x4
Limited Black/Black Leather, 6 Cyl., AT, AC, PW, PDL, Stereo, New Radials, Beautiful Shape, 80,000 Mi.
\$8,495



97 DODGE RAM 2500 4x4
LARAMIE SLT Ext. Longbed, Cummins Turbo, AT, AC, PW, PDL, Tilt, Cruise, Stereo, CD/Cassette, Only 80,000 Mi., Navy Blue & Immaculate, Nicest One I Ever Sold Here At Affordable.
\$18,500



96 CHEV. SUBURBAN SLT
4x4, 6.5 Turbo Dsl, AT, Dual AC, 3rd Seat, Interior Full Leather, Exterior All Black, 120K, Looks & Drives Like New!
\$13,995



00 FORD F350 LARIAT 4x4
Super Duty Crew Cab Longbed, 7.3 Powerstroke DSL, AT, AC, PW, PDL, Leather, Cruise, Tilt, Absolutely Perfect In Every Way, 99,000 Mi
\$24,995



96 FORD F350 XL 4x4
7.3 Powerstroke Dsl, AT, PS, PB, Cloth Seat, Only 60,000 Actual Miles, Superb Condition, No Air
\$14,995
With Air **\$15,995**



92 FORD F350 XLT 4x4, 1-Ton Crew Cab Longbed, 7.3 International DSL, 5 Spd, PW, PDL, Tilt, Cruise, AC, & More, All Black, New Clutch & Transfer Case, Runs & Looks Like New, Well Cared For, 200,000 Mi., **\$10,995**



83 CHEV. 1500 4x4
305 V8, AT, AC, Real Clean Truck - All Rebuilt! 100,000 Mi
\$4,500



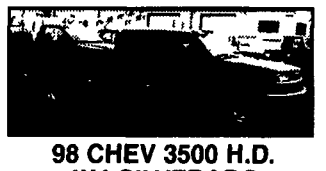
89 CHEV. 1500 SILVERADO 4x4
Longbed, 350 V8, AT, AC, All Power, Real Good Looker & Runner, No Rust, Real Clean! 140K
\$3,995



97 FORD F250 XLT 4x4
AT, AC, PW, PDL, Cruise, 8600 GVW, Tilt, 351 V8, Tow Package & Alloys 111K Real Clean Truck, Must See!
\$8995



93 MERC VILLAGER
V6, AT, AC, PW, PDL, Cruise & Tilt, Very Clean Van, Dark Green, 100,000 Mi
\$3,995



98 CHEV 3500 H.D. 4x4 SILVERADO
Crew Cab, Vortec 454 V8, AT, AC, PW, PDL, Cruise & Tilt, All Black, Looks & Drives Like a New One! 10,000 GVW 100,000 mi **\$12,995**



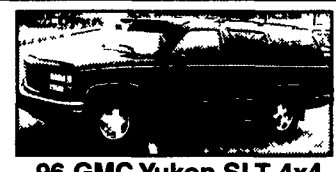
97 CHEV. 1500 SILVERADO 4x4 EXT.
Shortbed, 100,000 Mi., Vortec 350 V8, AT, AC, PW, PDL, Leather Interior & Superb Shape Wholesale Priced!
\$10,995 Firm



97 DODGE RAM 3500 4x4
Laramie SLT, Dually Ext Longbed, 1-Ton Cummins Dsl, 5-Spd., AC, PW, PDL, Stereo, Cruise, Tilt & More, 140,000 Mi., Extra Clean With New Tires! Must See!
\$17,995



89 FORD F250 XLT 4x4
AT, AC, PW, PDL, 351 V8, Tilt Cruise & Tow Package. 8600 GVW Real Clean Truck 111,000 mi
\$3995



96 GMC Yukon SLT 4x4
Vortec 350 V8, AT, Dual AC, All Power, Barn Doors Very Sharp And Clean Vehicle 90K
\$10,995



88 FORD F350 XLT 4x4
Crew Cab, Longbed, Dually, 1-Ton, 7.3 International Dsl., 5-Spd., AC, PW, PDL, Stereo, Radials, Extra Clean & Super Maintained In & Out. Runs Perfect - Over 100,000 Mi. & You'd Never Know To See & Drive!
\$8,995



99 FORD F350 LXT 4x4
Superduty 7.3 Powerstroke DSL, 6 Speed, AC, PW, PDL, Stereo, Cruise & Tilt Condition, about 90K
\$18,995



00 FORD F350 LARIAT
4x4, Quad Longbed, 1-Ton Dually 7.3 Powerstroke, AT, AC, PW, PDL, Stereo, Alloys, Mint Condition, 105K, Must See!
\$22,995



90 FORD F250 CUSTOM
6 Cylinder, 300 Motor, Automatic, Nice Clean Work Truck for Fall, 100,000 Mi
\$2,400



98 FORD F350 SUPREME
18' Box Truck 11,500 GVW's, Rollup Door, Plank, New Tires, Brakes, & Insp., AT, AC, Stereo, 5.4 Triton, 100,000 Mi., Superb, Sharp We used truck all year!
\$8,999

35

TRUCKS AND TRAILERS

96 Dodge sport 4x4,pu, 82,000 mi, sft, laramie w/ air, ps,pw,pl, tilt, cruise, abs, auto sliding window, v-8, & bedliner. Ex cond, \$8,600. 610-377-3136

1996 Dodge 1500 Club Cab Truck, 8' bed, auto trans., 2WD, 90K miles, very clean, \$9,295. (717) 944-4920

AL HAMILTON USED TRUCK SALES

PO Box 157 55 Doe Run Road, Manheim PA 17545
Phone 717-665-7145 Fax 717-665-2137

'86 FORD LN8000

C&C 3208T 215 HP, 5 Spd Trans, 2 Spd Rear, Custom Cab, 222 WB, 156 C A GVW 33,000
\$11,500



'74 MACK RD685S

16 ALUM DUMP ENDT 675-237 HP 6 Spd Trans, 18 Front Axle, 44 Rear Axle Eng Brake \$12,500



'96 INT. 4900 DT 466

6 + 1 Trans, Air Brakes, A/C, 186 CA, GVW 33,000
\$19,500



'97 Ford LN8000

C&C 8.3 Cummins 6 Spd Trans, Custom Int., A/C, 180 CA, 246 WB, GWR 35,000
\$19,500



'94 GMC BRIGADIER, 10' Dump Cant Hyd Walk 11 Oneway Plow, 10' Baughman Crder Box 3208 CAT, Auto Trans 35,000 GVW, Set-Up For Tail Gate Spreader & Exc Cond
\$15,500



'70 FORD LN900 10' Dump, 477 Gas, 5 Spd Trans, 2 Spd Rear, GVW 33,000
\$6,500



'91 FORD LN9000 10' Dump, L-10 Cummins, 9 Spd., Trans, Custom Cab, Air Brakes, Pintle, Hook, 34,700 GVW
\$22,500



'91 INT 4700 C&C DTA 360, 170 HP, 5 Spd Trans, Hyd Brakes, Non CDL, 170 WB, 140 CA, 26,000 GVW
\$12,500



'90 FORD LT9000 14' Steel Dump, Heavy Specs, 3306 CAT, 7L Trans GVW 62,000
\$25,000



1997 FORD F-800 New 10' Dump 5.9 Cummins 190 HP, 6 SPD Trans Hyd Brakes, Non CDL GVW 26,000
\$24,500



'93 INT 4700 C & C, DTA 360, 190 HP, 5 Spd Trans, Air Brakes, Non CDL, 236 WB 168 CA, GVW 26,000
\$14,500



'69 Mack R - Model, Single Axle TT, 237 Mack, 5 Spd Trans, Power Steering, Wet line, Excellent Cond
\$9,500



'93 FORD Superduty, New 14' Dump, 7.5L Gas, 5 Spd Trans, Full Power, A/C, 15,000 GVW, 28,000 Miles Exc Cond
\$19,500

LEED
402 S. Chicago Rd. Manheim, PA
(717) 898-1200 • Fax (717) 898-1300
Consignments Welcome CALL: Ray Leed Financing Available
If We Don't Have It - We Can Find It!



1990 IHC 4900, DTA-360, 6 Spd, P/S, Hyd-Brakes, 29,000 GVW, 18' Van Body w/CSD, New Insp. Very Clean
Only \$8,900



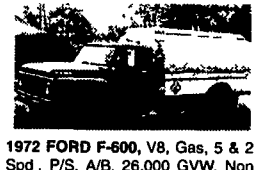
Trailer, Trailer, Trailer's, 45'-48'-53' Van Trailers Available, Some Air Ride
Call For Details



FREE CONVEYOR WITH TRUCK
(4) 85 to 90 GMC BRIGADIERS & TOPKICKS, 320B Cat Diesels, 5 & 2 Spd., P/S, A/B, 30,000 GVD, 22' Platform Bodies, Fleet Maint., Clean
Call For Details



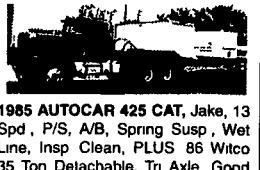
1999 FORD E-350 CARGO VAN, V8 Triton Gas Eng., A/T, P/S, P/B, A/C, P/W P/L, Cruise, Custom Shelves & Cabinets, Like New Priced To Sell!



1972 FORD F-600, V8, Gas, 5 & 2 Spd., P/S, A/B, 26,000 GVW, Non CDL, 2300 Gal 3 Comp Steel Tank w/Hose Reel & Meter Only
\$1,995



1986 FORD E-350 EXT., Ex-Ambulance, V8, A/T, P/S, P/B, A/C, Cruise, Loaded With Options, Only 58,000 Mi., Inspected Till 8/03, Very Clean
Only \$1,695



1985 AUTOCAR 425 CAT, Jake, 13 Spd., P/S, A/B, Spring Susp., Wet Line, Insp Clean, PLUS 86 Witco 35 Ton Detachable, Tr Axle, Good Tires, Insp., Also Clean
PRICED TO SELL!



1991 GMC TOPKICK, 3116 CAT Diesel, 215 HP, 6 Spd., P/S, A/B, A/C, 32,000 GVW, 28' C&C
Must Sell



1980 IHC S1954, DT466 Turbo Diesel, 10 Spd., P/S, A/B, 33,000 GVW, Corner, Silver Hawk Ref Unit, 16' Hackney Ref Body, CSD, Roll-up Rear, Insp., Clean Priced To Sell!



1993 FORD E250 CARGO VAN, 6 Cyl., A/T, P/S, P/B, 7,200 GVW, 144,000 Miles Insp., Clean
Only \$2,500



1974 FORD 14' STEP VAN, 6 Cyl., 4 Spd., Dual Wheel, 9,000 GVW, Only 90,000 Miles, Insp., Shelves, Clean for Year
Reduced to \$1,200



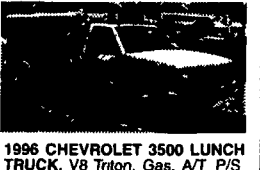
1995 FORD E350, V8, A/T, A/C, P/S, 15' H. Cube with Peak, Dual Wheel, 11,000 GVW, Ramp, Tow Pkg., Insp., Very Clean



FREE CONVEYOR WITH TK.
(4) 85 TO 90 GMC BRIGADIERS & TOP KICKS, 320B Cat Diesels, 5 & 2 Spds P/S, A/B, 30,000 GVW, 22' Platform Bodies, Fleet Maint., Clean
CALL FOR DETAILS



1986 GMC VANDURA 3500, V8, A/T, P/S, P/B, 8600 GVW with Scott Air Reeler Unit & Van Pkg., New Comp., & 134A Freon, Insp., Clean
Reduced to \$3,000



1996 CHEVROLET 3500 LUNCH TRUCK, V8 Triton, Gas, A/T P/S P/B, A/C, Dual Wheel, S S Custom Catering Body, All Options, A/C & Steam, Insp., Very Clean
Only \$8,000