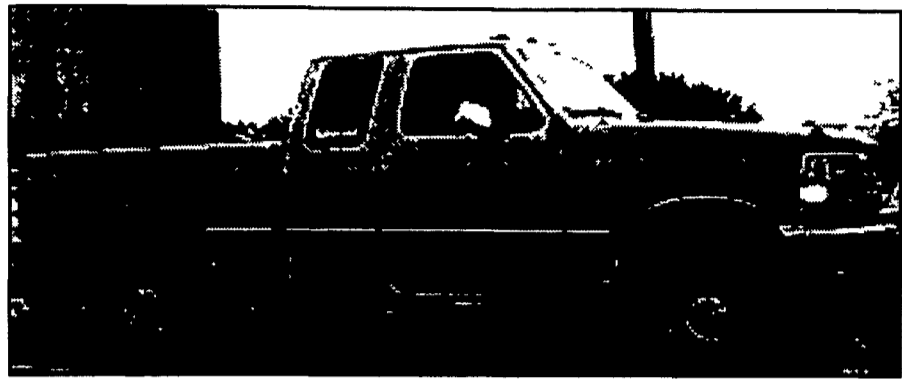




Ziemer GMC



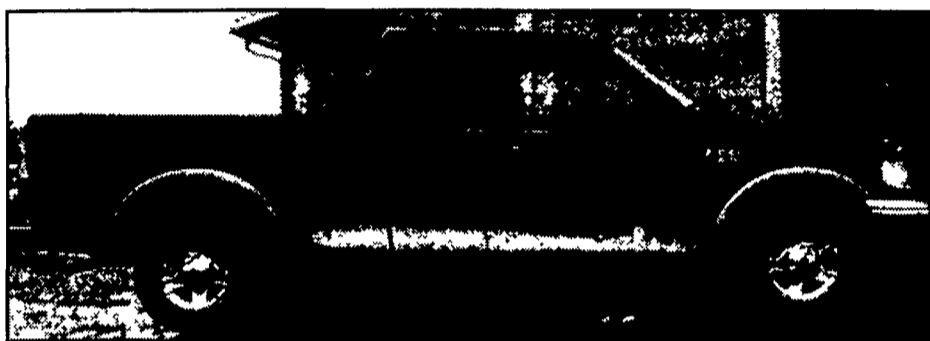
NEW HOLLAND, PA



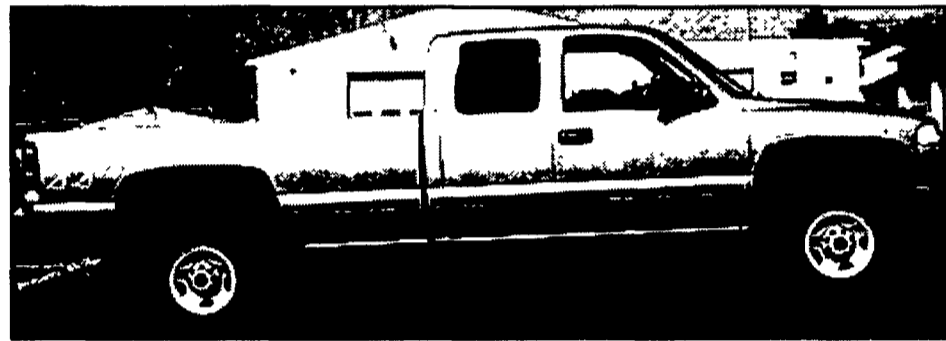
1997 FORD F250 SUPERCAB 4X4 XLT, Powerstroke Diesel, 5 Speed, AC, PW, PL, Cruise/Tilt, Cass, Alloys, Tutone! Another Beautiful Local Trade!
Was \$19,987 Now \$16,900



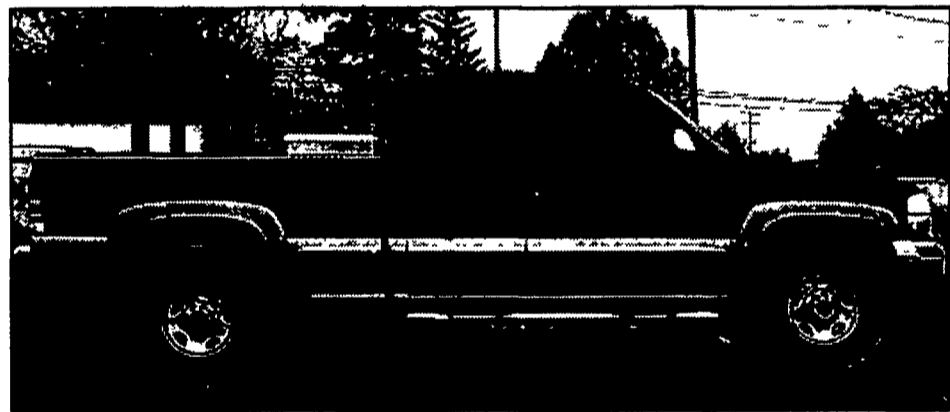
1998 GMC 1500 EXT. CAB 4x4 SLE V/8, Auto., AC, PW, PL, Cruise/Tilt, Cass., Alloys, Super Sharp! Another Beautiful Local Trade!
Was \$20,487 Now \$16,900



2000 FORD F150 S/CAB LARIAT V/8, Auto., AC, PW, PL, P. Seat, Cruise/Tilt, Leather Capt. Chairs, Gorgeous Tutone! Chrome Wheels! Low Miles! As New As It Gets! Another Beautiful Local Trade!
Was \$21,992 Now \$19,950



2001 GMC SIERRA 2500 EXT. CAB 4x4 SL, Good V8, Auto, AC, Cruise/Tilt, Cass., Save Big! Super Clean!
Another Beautiful Local Trade!
Was \$25,995 Now \$22,900



2000 GMC 2500 EXT. CAB 4x4 SLE 4 Dr., 6000 V/8, Auto., AC, PW, PL, Cruise/Tilt, CD, Capt. Chairs, Tutone, Super Low Miles! Meticulous! Another Beautiful Trade!
Was \$26,775 Now \$24,987



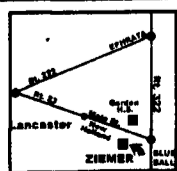
2001 FORD F250 SUPERCAB 4X4 LARIAT, V/10, Auto, AC, PW, PL, P Seat, Cruise/Tilt, 6 Disc. CD, Cap! None Nicer!
Another Beautiful Local Trade!
Was \$29,995 Now \$28,987



2002 GMC 2500 H.D. SL 6,000 V/8, 5 Spd., A/C, Locking Diff., CD, Trailer Pack.
MSRP \$25,738 SALE \$19,995*



2003 GMC SIERRA 3500 CREW CAB 4x4 SLT DUALY Duramax Diesel, Allison Auto., Climate, Bose 6 Disc CD, Locking Diff., Cruise/Tilt, PW, PL, P. Seat, Leather Dual Zone Heated Buckets w/Dr. Memory, On Star, XM Satellite Radio, Keyless, P/Extending Mirrors, Tow, Sticker 47,834
SALE \$40,995*



Hours: Mon.-Thurs. 9-8:30
Fri. 9-6 & Sat. 9-3

Ziemer www.ziemernewholland.com
A Name You Can Trust
BUICK PONTIAC GMC TRUCK

*Sale Price on New Includes Factory Rebate/Tax, Tags Additional

717-354-4451
1-800-824-2277