



**1991 Chevy S-10
Extended Cab Pick-up**
193,000 Miles, Motor and Trans
less than 100,000 miles.
Many new parts.
\$1,750 OBO
410/584-2759, No Sunday Calls



**1983 Ford w/Rayman
Fert. Tender, \$7,000.**
800-732-1545

★ H&L SALES CO. ★

3830 North George St. Extd., Manchester, PA 17345
New Phone Numbers! **866-999-5600 • 717-764-3477 (York)**



1995 PETE 377
12 7 Det, 470 hp, Jake Brake, 9 speed, 63"
Sleeper Air Ride Susp., Alum and Steel
\$12,900



1996 VOLVO WG 64
11.1 Det, 350 hp, Jake Brake, 9 speed,
Spring Susp., Steel Wheels
\$10,900



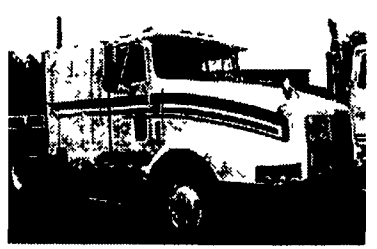
1998 UN 1400
Diesel, Auto and Manual Trans,
14,000 GVW, 14" and 16" Van Bodys
Starting at \$9,800



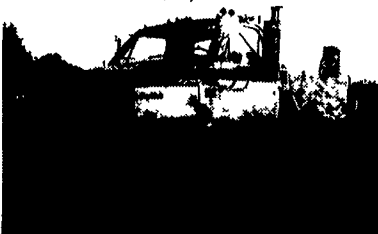
1995 OTTAWA
Jockey Truck, Cummins Power, Auto,
Model YT30



'96 INT'L 9400
Det. 430hp, Jake, 70" Pro Sleeper, Air Ride
Susp, Alum Frt, and Steel Rear Wheels,
10 spd, 228" WB,
\$14,500

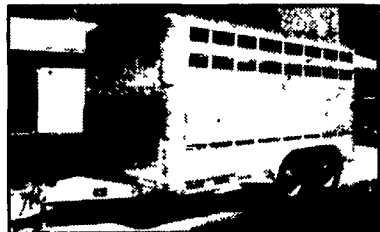


(2) '93 INT'L 9400 CAT.
Det Eng, 10 spd, Air Ride Susp,
48" Sleeper, Starting @
\$6,500



30' ALU. DUMP TRAILERS

**Save Now On All Instock Eby Livestock
Trailers at Hostetlers**



**Bumper Pull
Save \$500**



**Gooseneck
Save \$700**

Save \$500 or \$700 with Factory Incentives and Hostetler Promotion
off the already reduced prices on

EBY TRAILERS IN OUR INVENTORY.

Buy Now For Best Selection



Hostetler Truck Bodies & Trailers

Milroy Exit of Rt. 322 between Lewistown & State College

717-667-3921

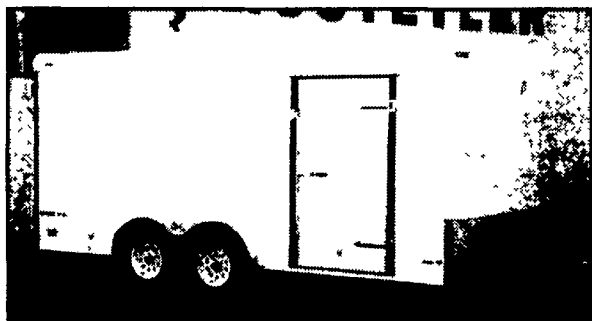


HOSTETLER

Truck Bodies & Trailers

717-667-3921

Milroy Exit off Rt. 322
Between Lewistown & State College



Pace Enclosed Trailers

**Journey Single Axle Trailers, 5'x8" or 10' and
6'x10" or 12. Call for Colors and Sizes**

**Journey Tandem Axle Trailers, 7'x14" or 16';
Double Doors or Ramp Doors, Side Doors,
Electric Brakes**

**Cargo Sport 8'x16" Tandem Axle Trailer, Side
Door, Double Rear, Stone Guard.**

**Shadow 24' Car Hauler, GT Package, Call
for Details**



Landscape Trailers

**(16) Single Axle Utility Trailers, Tilt or Ramp Gate
Starting At \$595.**

**(3) Tandem Axle Utility Trailers, Ramp Gate, 7000# GVW
Starting At \$1750.**

**US Cargo 16' Tandem Axle, Rear and Side Ramp, Dovetail,
7000# GVW, Was \$2,595, Clearance Price \$2,235.**

**US Cargo 20' Tandem Axle, Rear and Side Ramp, Dovetail,
10,000# GVW, Was \$2,995, Clearance Price \$2,595.**

Loader & Equipment Trailers

**(2) Moritz 16' Loader Trailers, Torsion Axles, Ramps, 9950#
Moritz 18' Loader Trailer, Torsion Axles, Ramps, 9950# GVW
Moritz 18'+4' Equipment Trailer, Deckover Dovetail
Moritz 20' Deckover Equipment Trailer, Torsion Axles**

Gooseneck Flatbed Trailers

**Moritz 16'+5' Flatbed, Adj Dovetail, 10,000# GVW,
Corn Pro 20'+5' Flatbed, 3 Ramps, 14,000# GVW**

Hydraulic Dump Trailers

**E Z DUMPER 6' x 10', 10,000# GVW, Dump Thru Gate
MORITZ 6'8" x 10' Low Pro Dump Rams, 9,950# GVW
Hostetler 8' x 12' Aluminum Deckover Dump, 20" Sides,
26" Front & Gate, Scissor Hoist, 10 or 12000# GVW**



Steel Livestock & Horse Combo Trailers

**(2) Moritz 6'x16' Bumper Pull Livestock, 7000# GVW,
Corn Pro 6'x16' Bumper Pull Livestock, 7' High
Moritz 2 Horse Slant Load, Dressing Room, 7' High
Moritz 6'8"x16' Bumper Pull Livestock, Heavy Axles
Moritz 6'8"x18' Gooseneck, 7' High for Horses**

Eby Aluminum Livestock Trailers

**Maverick 6'8"x16' Bumper Pull, Heavy Axles, 16" Radials
Maverick LS, 6'x16" Gooseneck, 10,000# GVW, 16" Radials
Maverick 6'8"x16' Gooseneck, 7000# Axles, 16" Radials
(2) Maverick 6'8"x20' Gooseneck, 7000# Axles, 16" Radials**

Eby Aluminum Horse Combo Trailers

**Maverick LS 6'x13' Bumper Pull, 7' High for Horses
Maverick LS 6'x16' Bumper Pull, 7' High for Horses**

Used Livestock & Horse Trailers

**Arnt 2 Horse, Walk Thru, Rear Ramp
Was \$1550. Clearance Priced \$1150.**

Misc. New and Used Truck Eq.

**Tamaqua 11' Dump Body, 212" Sides 20" Gate New
Was \$1995. Clearance Priced \$1,595.**

**Eby Used 12' Cattle Body Aluminum, Good Condition
Was \$1995. Clearance Priced \$1,695.**

**16' Aluminum Grain Body, Double Acting Tailgate, with
Chute, 48" High Sides, H D Construction**

**Knapheide Used 9' Service Body, Bottle Gas Compartment,
Good Condition**

**Used 12' Dry Freight Van Body, Double Rear Doors, 84" High,
Excellent Condition**

**Used 16' Aluminum Dry Freight Van Body, Roll Up Rear Door,
8 1/2' High Inside, Translucent Roof, Exc Cond**